

# SAFETY GRATING

## Traction™ Tread

### TRACTION TREAD™ FLOORING

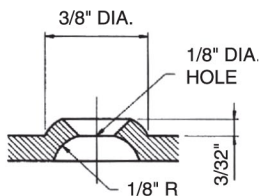
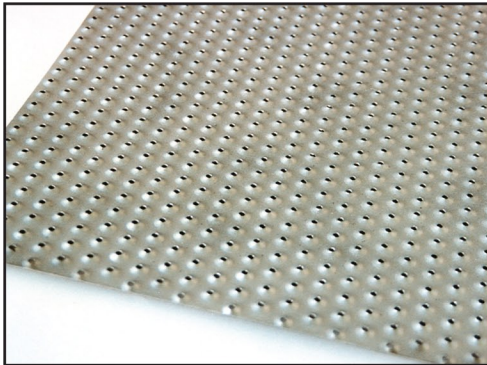
Traction Tread™ Flooring is readily available in stock sheets designed for secondary fabrication requirements.

#### MATERIAL OPTIONS

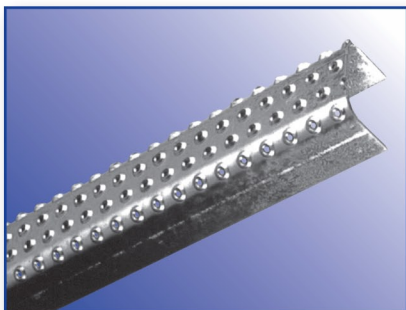
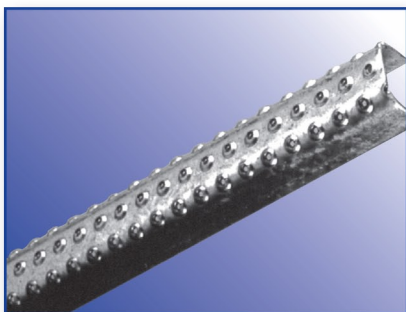
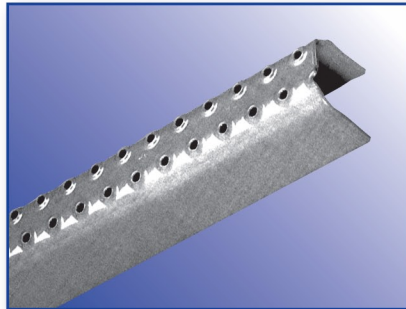
- Hot rolled, pickled and oiled carbon steel  
11-gauge (5.0 lb / sq. ft.)  
13-gauge (3.8 lb / sq. ft.)  
16-gauge (2.5 lb / sq. ft.)
- Stainless Steel 304 alloy  
16-gauge (2.5 lb / sq. ft.)
- .125 Aluminum alloy 5052-H32  
(1.6 lb / sq. ft.)

#### SHEET SIZE

- Standard 36" x 120"
- Cut to order



**DIMPLE DETAIL**



### TRACTION TREAD™ LADDER RUNGS

#### 2-HOLE LADDER RUNG

- Hot rolled, pickled and oiled carbon steel  
11-gauge (1.5 lb / lf)  
13-gauge (1.1 lb / lf)
- Aluminum alloy 5052-H32  
.125" (0.5 lb / lf)
- 1-1/4" Wide x 1-1/2" Height x 48" or 60" Length
- Available in 16GA, 304 or 316 Stainless Steel

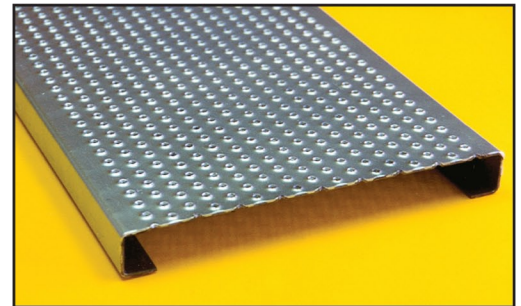
#### 3-HOLE LADDER RUNG

- Hot rolled, pickled and oiled carbon steel  
11-gauge (1.2 lb / lf)  
13-gauge (0.9 lb / lf)
- Aluminum alloy 5052-H32  
.125" (0.5 lb / lf)
- 1-5/8" Wide x 1-1/8" Height x 48" or 60" Length
- Available in 16GA, 304 or 316 Stainless Steel

#### 4-HOLE LADDER RUNG

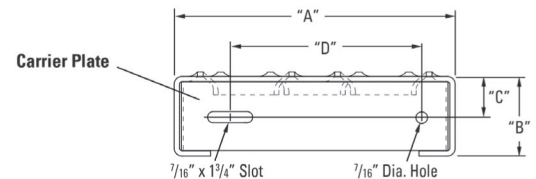
- Hot rolled, pickled and oiled carbon steel  
11-gauge (1.9 lb / lf)  
13-gauge (1.4 lb / lf)
- Aluminum alloy 5052-H32  
.125" (0.7 lb / lf)
- 2-1/4" Wide x 1-1/2" Height x 48" or 60" Length
- Available in 16GA, 304 or 316 Stainless Steel

### Traction Tread™ Plank



#### MATERIAL OPTIONS

- Hot rolled, pickled and oiled carbon steel  
11-gauge and 13-gauge
- Pre-galvanized steel:  
11-gauge and 13-gauge
- .125 Aluminum alloy 5052-H32



#### PLANK DIMENSIONS

Carrier plates allow you to create your own custom stair treads. They are sold by the pair. (2 plates = one pair).

Product Width	"A"	"B"	"C"	"D"
7" (178mm)	6-15/16" (176mm)	1-1/2" (38mm)	3/4" (19mm)	4" (102mm)
	6-15/16" (176mm)	2" (51mm)	1" (25mm)	4" (102mm)
10" (254mm)	9-15/16" (252mm)	1-1/2" (38mm)	3/4" (19mm)	7" (178mm)
	9-15/16" (252mm)	2" (51mm)	1" (25mm)	7" (178mm)
12" (305mm)	11-15/16" (303mm)	1-1/2" (38mm)	3/4" (19mm)	9" (227mm)
	11-15/16" (303mm)	2" (51mm)	1" (25mm)	9" (227mm)