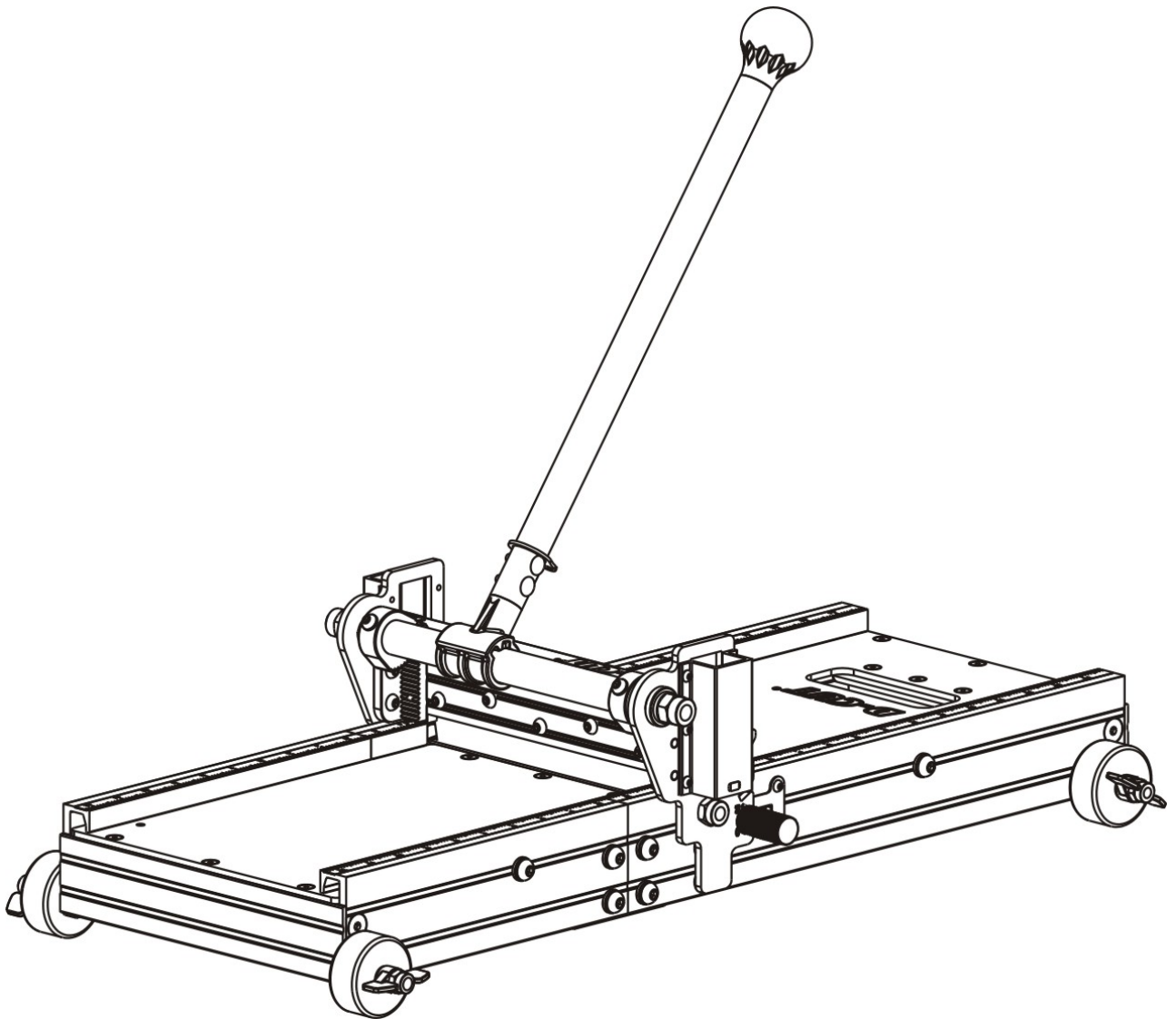
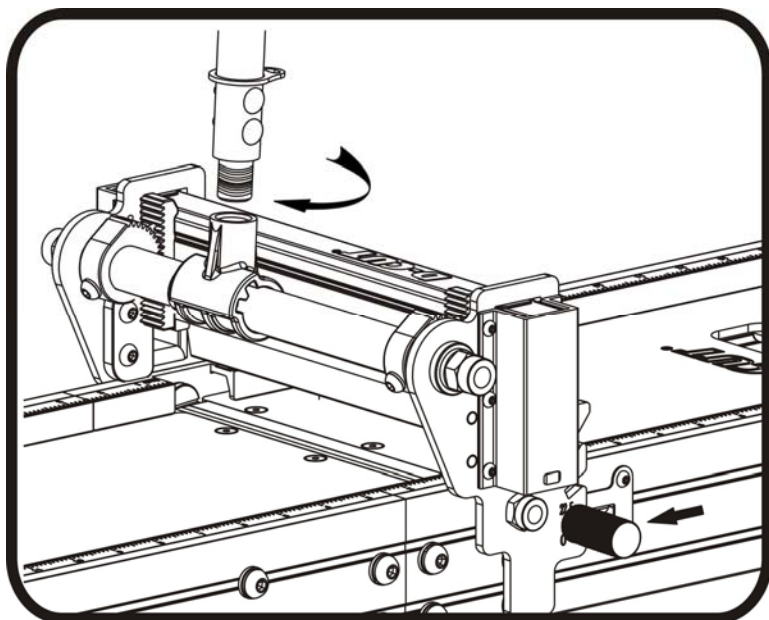


D-CUT[®]

OPERATION MANUAL

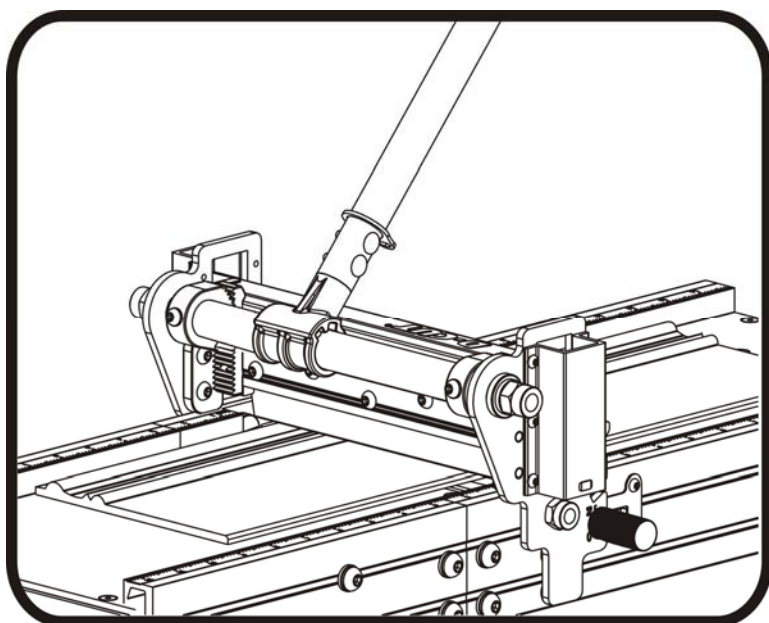
Vinyl Wall-base Cutter RC-200





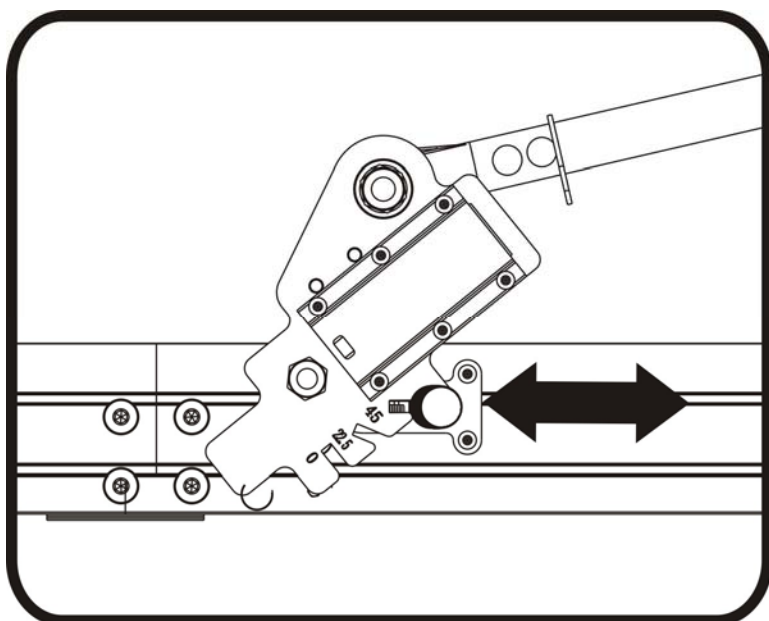
Handle Assembly

Thread the handle to the handle base as shown.



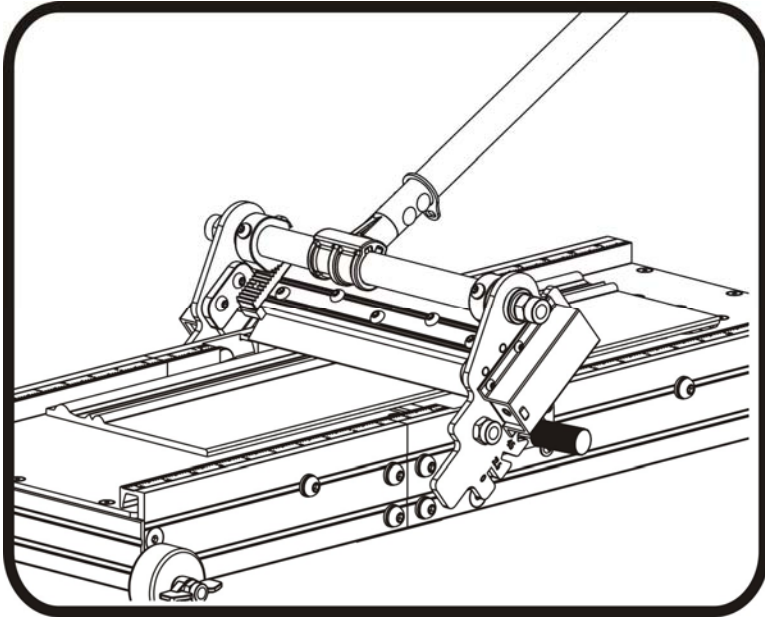
Straight Cut

Place the work-piece flush with either side of the guide bar on the working table and align the blade to the mark on the work-piece where needs to be cut. Then press the handle down to complete the cut.



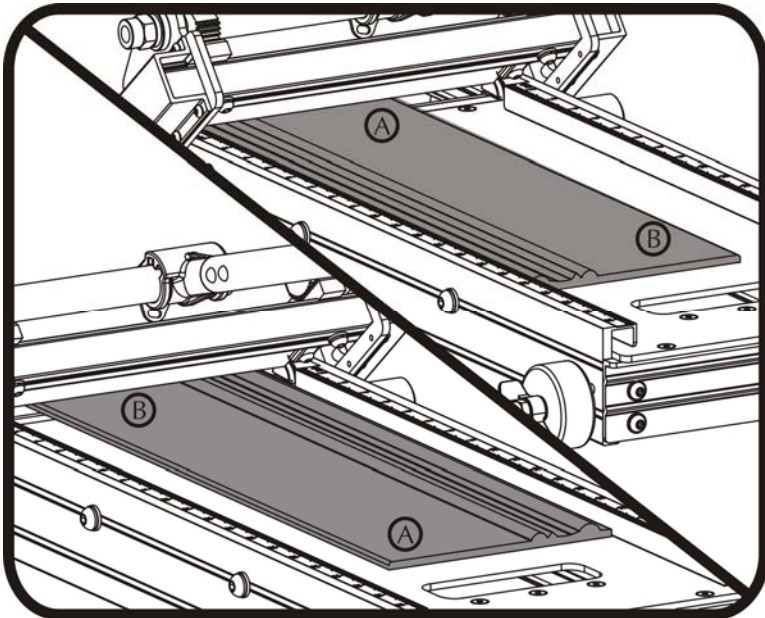
Bevel Cut (1)

There are three slots on the handle base as shown. One of them is for straight cut and other two are for bevel cuts. Pull the knob out of the angle slot on the swing head and release the knob to the desired angle slot as shown.



Bevel Cut (2)

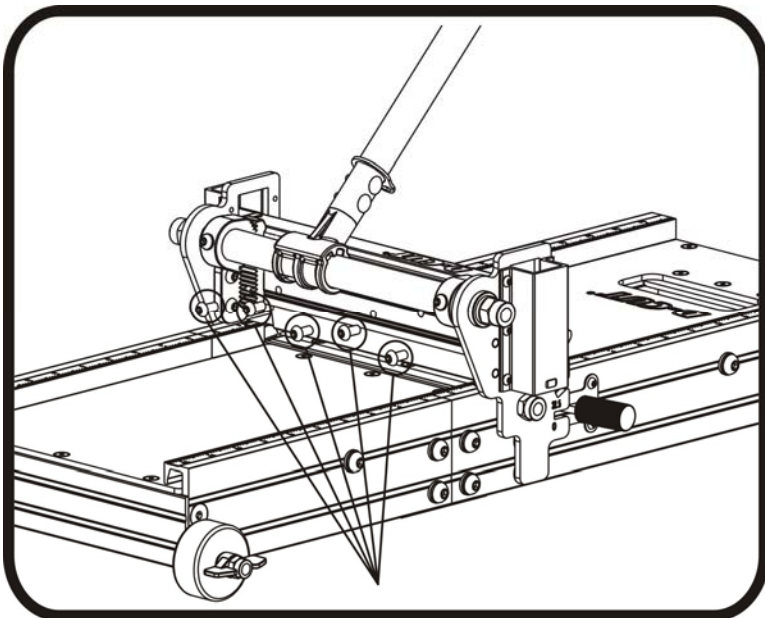
Place the work-piece flush with either side of the guide bar on the working table and align the blade to the mark on the work-piece where needs to be cut. Then press the handle down to complete the cut.



Bevel Cut (3)

Place the work-piece flush with either side of the guide bar on the working table and make a cut to get a half inside corner and a half outside corner. Then turn the work-piece around and place it flush with other side of the guide bar, then make the second cut to get another half inside corner and another half outside corner.

Note: Keep the flat part of the work-piece down towards the working table.

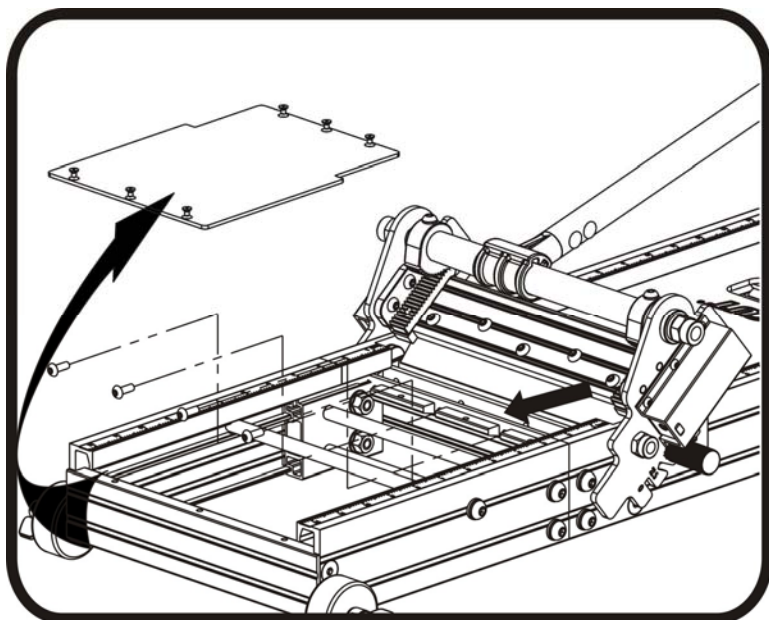


Changing the Blade

Use provided Allan wrench to remove the five screws as shown, then hold the blade by each end and carefully remove the blade out of the blade holder.

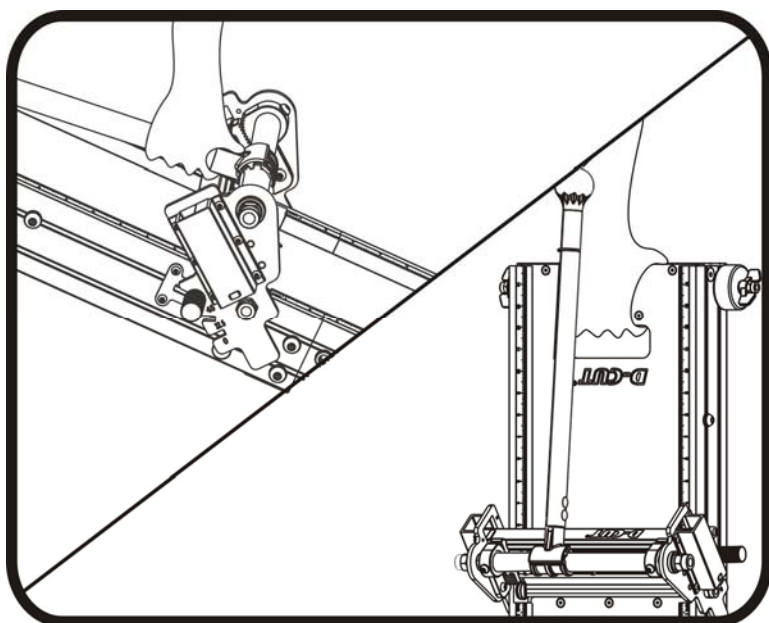
Note: when putting a new blade on, keep the flat side of the blade facing the main table.

Warning: Do not put your fingers against the sharp edge of the blade at any time.



Changing the Nylon Base

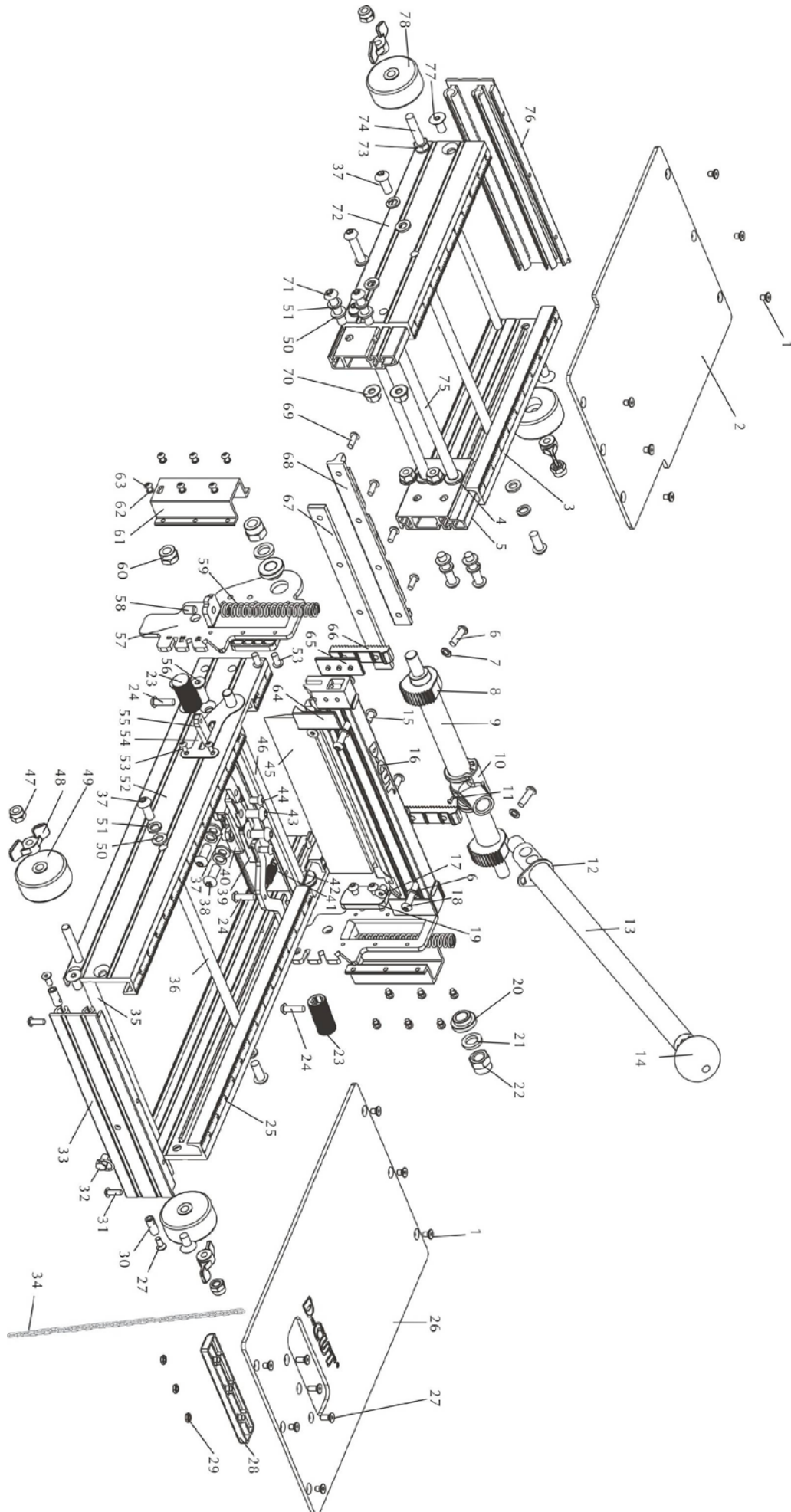
Use provided Allan wrench to take off total 6 screws to remove the working Table , then take off the four screws as shown to replace the nylon board when it is necessary.



Transportation and Storage

Hook the chain to the ring on the handle and carry or store the cutter as shown.

Explosive View



Part List

	Parts	Q'ty		Parts	Q'ty
1	Screw M5 x 8	12	40	Rotation Base	1
2	Front Working Table	1	41	Tension Spring	2
3	Frame A	1	42	Rotation Shaft	2
4	Washer ϕ 8x 1.5	4	43	Screw M8x 16	2
5	Working Table Connection	2	44	Cup head Screw M6x 10	2
6	Screw M6 x 20	2	45	Blade	1
7	Spring Washer ϕ 6 x 1.3	4	46	Cutter Base	1
8	Sector Gear A	2	47	Lock Nut M8	4
9	Output Shaft	1	48	Butterfly Nut	4
10	Handle Base	1	49	Rear Wheel	2
11	Screw M6 x 12	1	50	Washer ϕ 8 x 2	14
12	Hook A	1	51	Spring Washer ϕ 8 x 1.6	14
13	Handle	1	52	Frame D	1
14	Handle Ball	1	53	Screw M6 x 12	5
15	Hex Screw M6 x 12	2	54	Lining Board	2
16	Blade Base	1	55	Angle Position Shaft	2
17	Hex Screw M6 x 14	2	56	Screw M8 x 25	4
18	Bolt M6 x 32	2	57	Rotation Plate	2
19	Nylon Stop	2	58	Screw M8 x 12	2
20	Sleeve	2	59	Pressure Spring	2
21	Washer ϕ 12 x 3	2	60	Lock Nut M10	2
22	Lock Nut M12	2	61	Cover	2
23	Angle Handle	2	62	Washer ϕ 4 x 0 .8	12
24	Screw M5 x 10	6	63	Screw M4x 8	12
25	Frame A	1	64	Nylon Cover A	2
26	Rear Working Table	4	65	Nylon Cover B	2
27	Screw M5 x 12	5	66	Gear Bar	2
28	Carry Handle	1	67	Nylon Bar	1
29	Nut M5	3	68	Nylon Bar Holder	1
30	Pin with internal thread	2	69	Screw M5 x 14	4
31	Screw M5 x 14	2	70	Lock Nut M8	8
32	Customized Screw	1	71	Screw M8 x 37	8
33	Frame C	1	72	Frame E	1
34	Chain	1	73	Nut	1
35	Rear Wheel Shaft	1	74	Front Wheel Shaft	1
36	Cross Bar A	2	75	Cross Bar B	2
37	Nut M8	2	76	Frame F	1
38	Screw M8 x 20	6	77	Screw M8 x 16	4
39	Sector Gear B	2	78	Front Wheel	2

Packing List

	Item	Q'ty
1	Main Working Table	1
2	Extended Working Table	1
3	Cutter Handle	1
4	Plastic Box	1
5	Operation Manual	1
6	Hex Screw M5X8	3
7	3mm Allan Wrench	1
8	4 mm Allan Wrench	1
9	5 mm Allan Wrench	1
10	Screw M8X37	4
11	Spring Washer	4
12	Washer	4
13	Flange Nut	4

