

# Grip Strut® Stair Treads & Ladder Rungs. Available in Aluminum & Stainless Steel



## Standard Sizes and Recommended Spans<sup>(1)</sup>

STEEL				
Span in.	Gauge	Channel Depth—in.	STANDARD STAIR TREADS STAR TREADS WITH ABRASIVE NOSING	
			Size in.	Size in.
Up to 30	14	1½	2-Dia.—4½	—
			3-Dia.—7	3-Dia.—8½
			4-Dia.—9½	4-Dia.—10½
			5-Dia.—11½	—
30 to 36	14	1½	2-Dia.—4½	—
			3-Dia.—7	3-Dia.—8½
			4-Dia.—9½	4-Dia.—10½
			5-Dia.—11½	—
36 to 42	14	1½	2-Dia.—4½	—
			3-Dia.—7	3-Dia.—8½
			4-Dia.—9½	4-Dia.—10½
			5-Dia.—11½	—
42 to 48	14	2	2-Dia.—4½	—
			3-Dia.—7	3-Dia.—8½
			4-Dia.—9½	4-Dia.—10½
			5-Dia.—11½	—

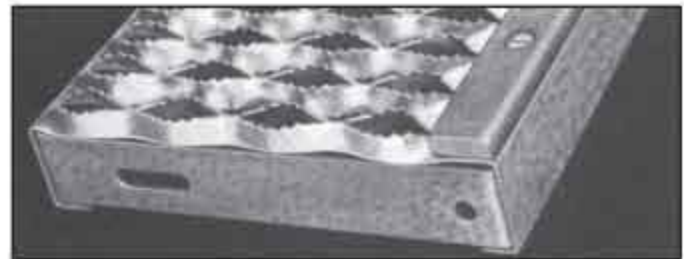


## STANDARD

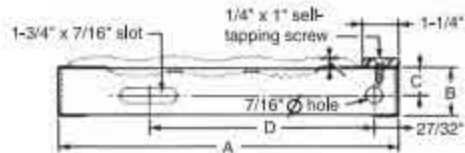
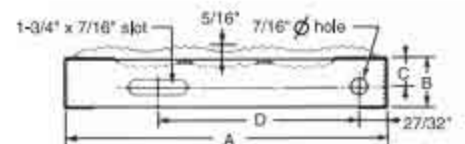
## Steel, Aluminum and Stainless Steel<sup>(1)</sup>

Standard				With Abrasive Nosing			
A	B	C	D	A	B	C	D
4½" (2-Dia.)	1½" 2"	¾" 1"	2½" 2½"	—	—	—	—
7" (3-Dia.)	1½" 2"	¾" 1"	3¾" 3¾"	8½" (3-Dia.)	1½" 2"	¾" 1"	4½" 4½"
9½" (4-Dia.)	1½" 2"	¾" 1"	5½" 5½"	10½" (4-Dia.)	1½" 2"	¾" 1"	6½" 6½"
11¾" (5-Dia.)	1½" 2"	¾" 1"	8½" 8½"	—	—	—	—

(1) Stainless steel not available in 2- and 3-Diamond widths.



## ABRASIVE NOSING



Dimensions A, B, C and D have a tolerance of ±1/16"