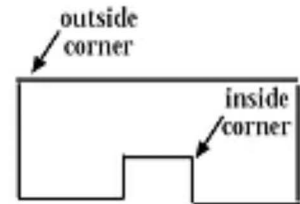


Hydro-Channel

Manufacturer's Installation Instructions

- 1) Clear footing of all dirt, mud, and loose debris.
- 2) Starting at an inside corner (example A), place 6 foot lengths along interior of basement wall.
- 3) Cut inside corners first (example B). Cut off approximately 8 inches of channel and cut channel at a 45 degree angle as shown. Lay corners in place and nail once to the footing.



Example A

NOTE:

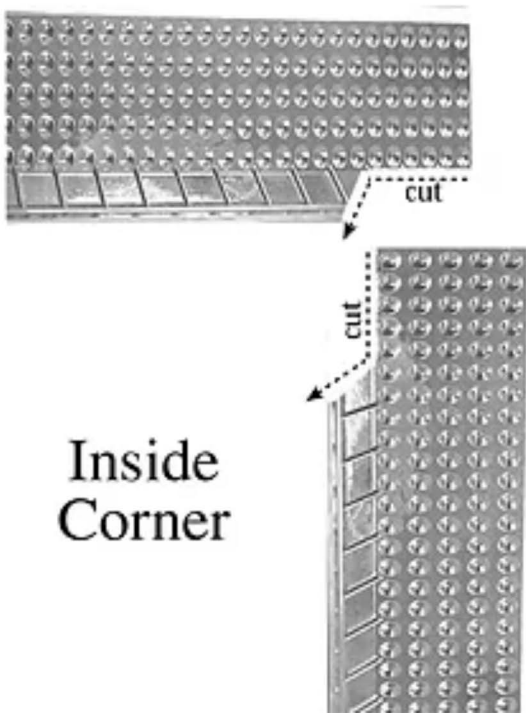
Outside corners require no special cut.

A little gap in the channel of this corner will not cause the system to fail. A little rock can be thrown in the gap or the corner can be cut at a 45 degree angle as shown (example C).



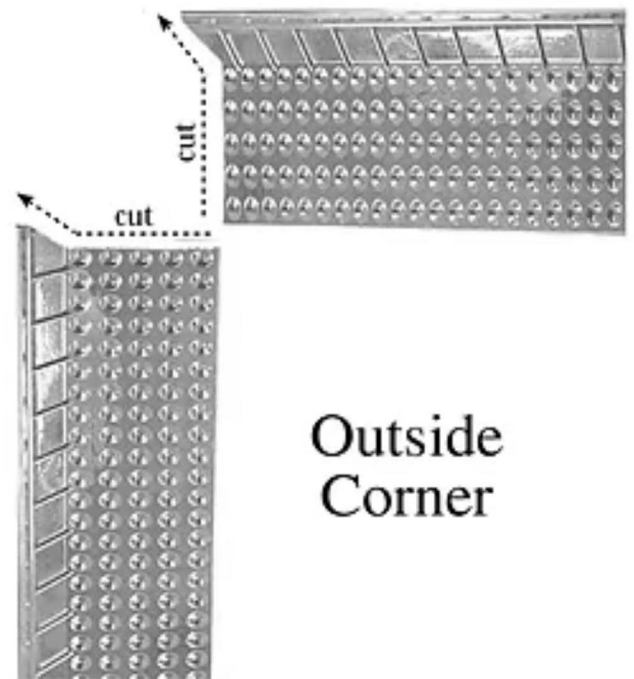
Inside corner installed

Example B



Inside
Corner

Example C

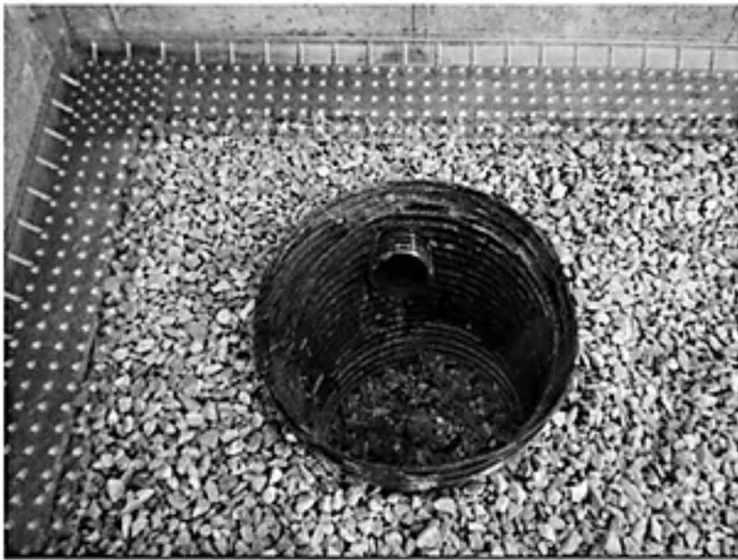


Outside
Corner

- 4) Lay all other pieces in place, overlapping 2 bubbles and nailing to the footing once on overlap and once in center of 6 foot lengths.

NOTE:

Make sure the system overlaps the footing onto the 4 inch rock sub-grade at least 2 inches next to the sump container (example D) or day light drain for a minimum of 2 lineal feet of the footing. If it doesn't a separate piece, with the channel cut off, will be need to create the overlap (example E).



Example D



Example E

Perforating the sump container will be necessary if no interior footing drain is installed in the 4 inch rock sub-grade.

If the footing is wider than the HYDRO CHANNEL for stretches over 30 feet, a separate 2 foot piece with the channel cut off needs to be installed at least every 20 feet to create at least a 2 inch overlap onto the rock sub-grade (example F).



Example F



Overlap is not required where the track overlaps the footing.