

DIMENSION WALLS

TEXTURED
DECORATIVE PANELS



Koffler Sales Company

TABLE OF CONTENTS

WALL PANELS	3
PANEL DESIGNS	17
MDC FINISHES	23
CUSTOM DESIGNS	27
INSTALLATION OVERVIEW	29
PRODUCT SPECIFICATIONS	30



ELLIPTICAL / NEW PENNY



CRACK ME UP / RUBBED BRONZE



WALL PANELS

Use textured, impact-resistant, decorative panels to add visual interest with an edge to your space.

From focal point to casual mood-setting, our 4' x 8' textured wall panels are available in a variety of textures and colors. Some panels are available as 4' x 10' sheets (See the Quick Reference Guide on page 32). Panels can be applied to flat or curved surfaces, walls, columns and more. Lower-profile designs provide maximum durability for high traffic areas.

FEATURES

- Thousands of designs and color combinations are available, while our custom program allows for endless design opportunities.
- Fabrication and installation of Dimension Walls is easy.
- Scratch and stain resistant film is added on many Dimension Walls finishes.
- Lightweight and flexible. Sheets can be rolled for shipment or used on curved walls or columns.
- Fire Rated. Dimension Walls meets the ASTM E-84 Class A fire rating.
- Durability. High impact, chemical and stain resistant.
- Paintable. Create your own custom color with our paintable finish.
- Custom designs. Looking for your own design or logo? Let our MDC sales representative help you create a design for your next project.
- Unlimited flexibility. Combine any pattern with any of the 46 standard finishes to create a solution that meets your design needs.
- Made with pride in the USA in an ISO certified facility.
- Consult with your local sales representative with specific questions, technical requirements or project needs.



MEADOWS / BRUSHED NICKEL



ADIRONDACK / BRUSHED ALUMINUM



HAMMERTIME / BRUSHED STAINLESS



RIBFEST / RUBBED BRONZE



HONEYCOMB / COPPER



HOMESLICE / ANTIQUE BRONZE



MACKENZIE / AGED BRONZE



GALLATIN / CHERRY



ALEUTIAN / COPPER



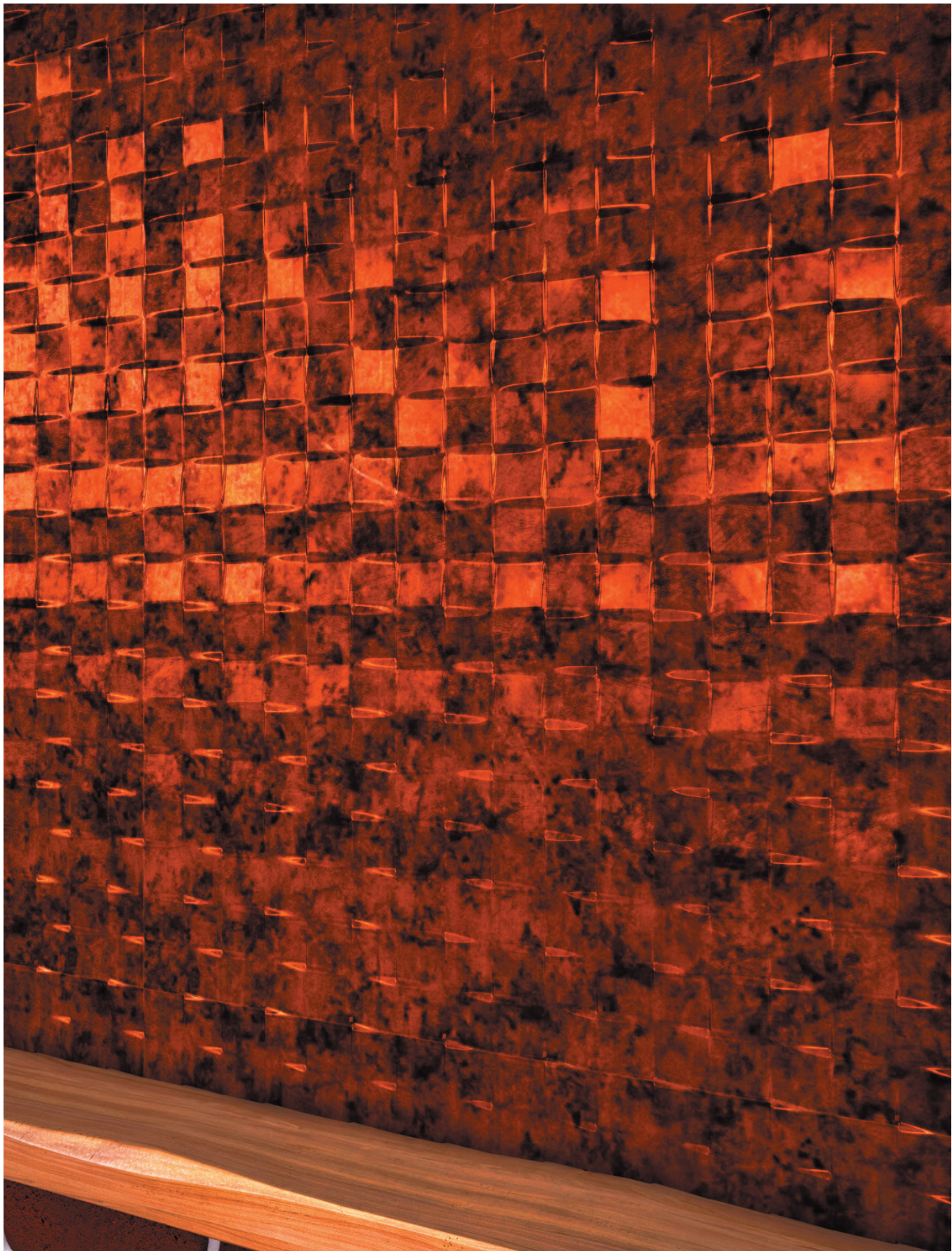
TETON / BRUSHED ALUMINUM



MINI METRO / SILVER



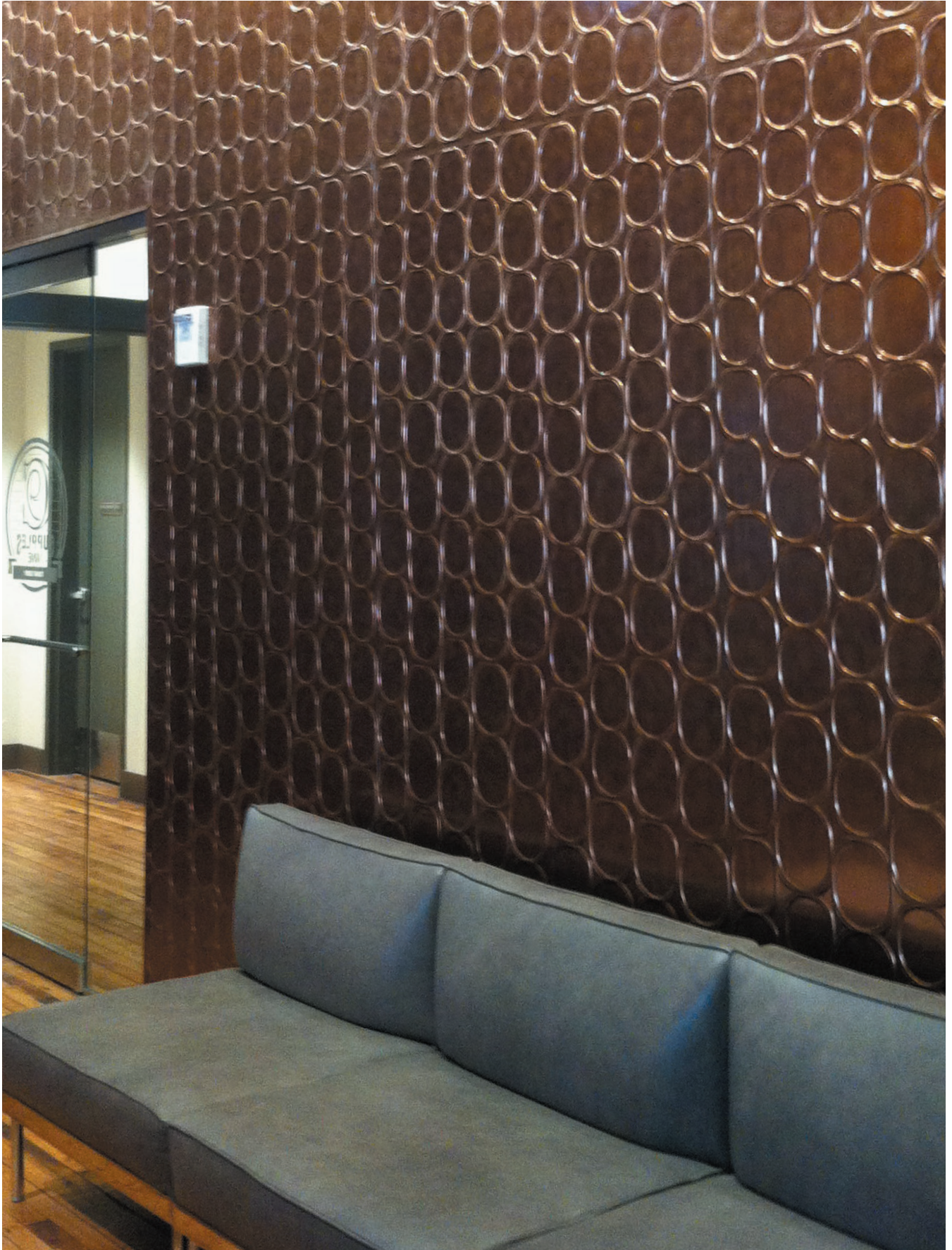
OH GEE! / LIGHT OAK



EXPANDED METRO / MOONSTONE COPPER



LINGUAL / WHITE - PAINTABLE



ELLIPTICAL / AGED GOLD



PAINTABLE FINISHES / CREATE CUSTOM PAINTABLE FINISHES WITH ANY PATTERN.

Wi-Tronix LLC, Bolingbrook, IL, Jake Clary – Photographer d+k Chicago, IL – Architects and Designers





SONIC / WHITE - PAINTABLE

PANEL DESIGNS



High-Traffic
Pattern

Indicates low-profile panels
for areas of high-traffic

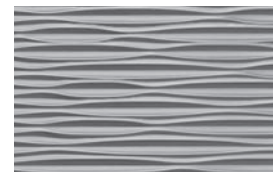
Our inspiring array of panel designs ranges from abstract to geometric to whimsical.

With Dimension Walls you can design inspiring spaces with great ease. These 3-dimensional wall panels offer the opportunity to transform a space in a truly innovative, completely unique way.

Whether a contemporary or more traditional design is required, the design and finish combination that Dimension Walls offers will suit most needs.

Most panels also feature the BIO (Built In Overlap), a unique seam system that makes installation easy and creates less visible seams.

ENLARGED
PANEL



PANEL
OVERVIEW



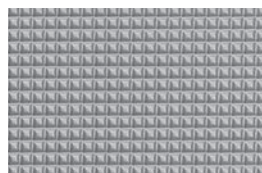
PANEL NAME



ADIRONDACK



ADIRONDACK
VERTICAL



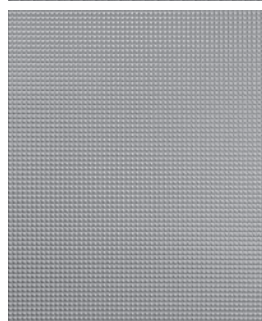
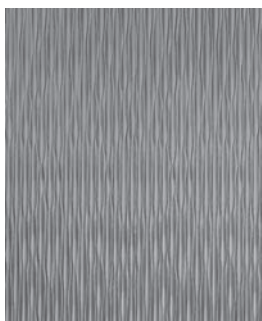
ALEUTIAN

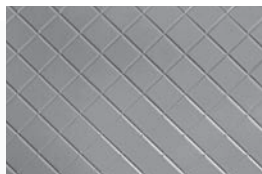


ALLOY

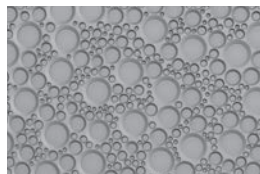
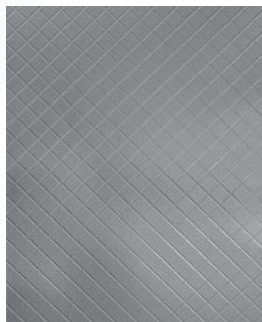


BLOSSOM

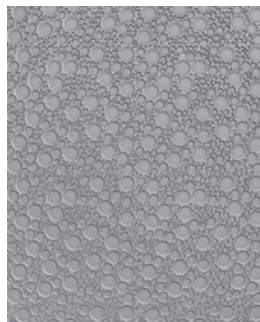




CERAMIC SIMPLICITY



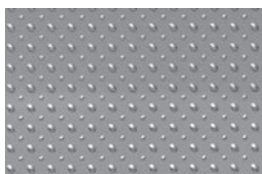
CIRCLE OF COOL



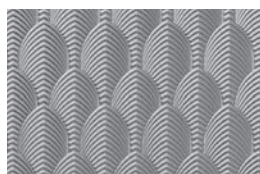
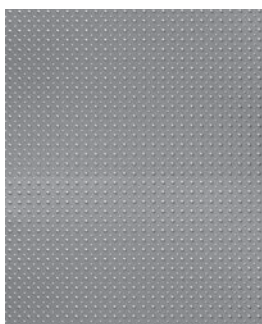
CRACK ME UP



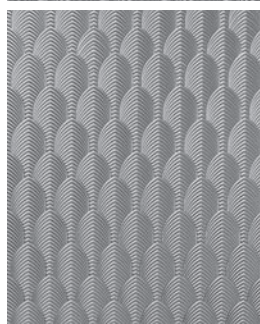
CURTAIN CALL



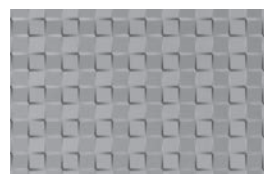
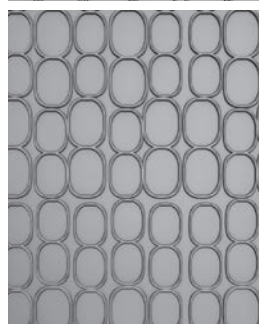
DROPLET



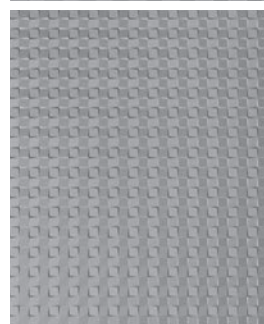
DUBAI



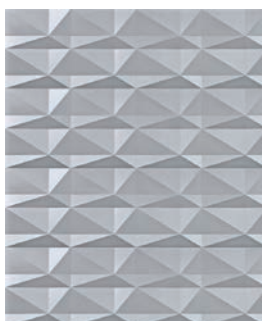
ELLIPTICAL



EXPANDED METRO



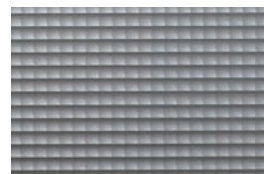
FACETED



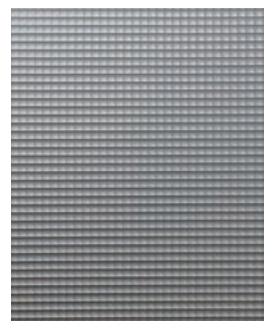
FIRESIDE

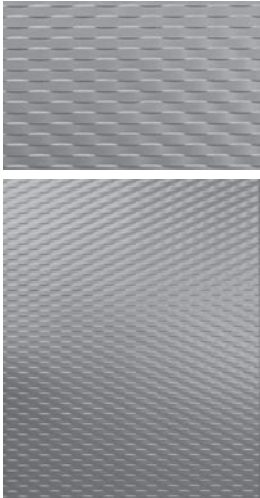


FLORAL VINE

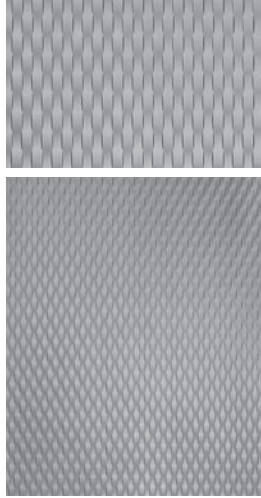


FORE

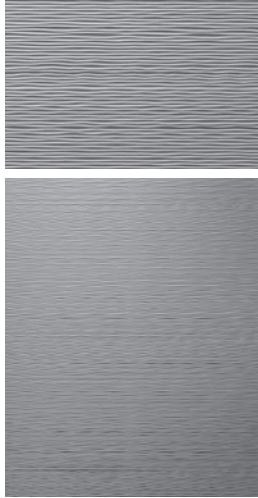




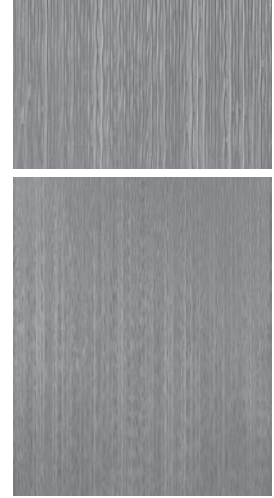
GALLATIN



GALLATIN VERTICAL



GANGES



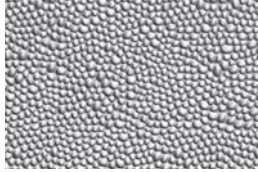
GANGES VERTICAL



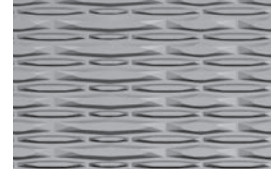
GROOVY



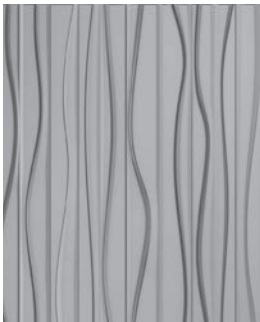
HALFPIPE



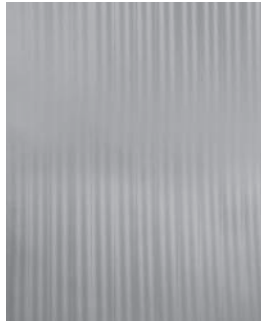
HAMMERED



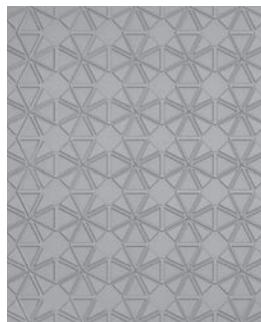
HAMMERTIME



HAMMERTIME
VERTICAL



HOMESLICE

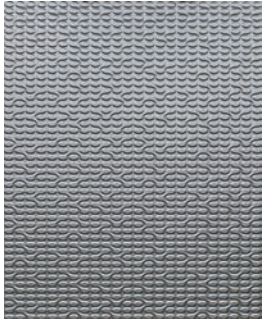
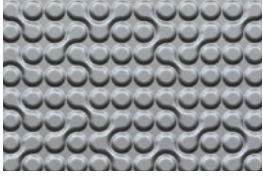


HONEYCOMB

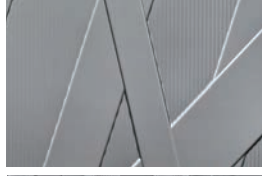


HURLEY





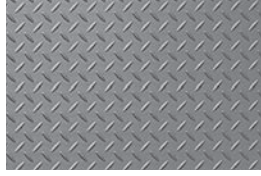
INFINITE



INTERLOCK



KANDRA



KENAI



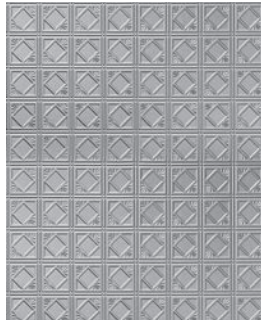
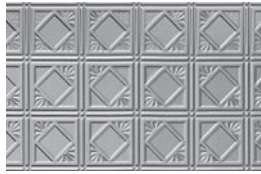
LINE THEM UP



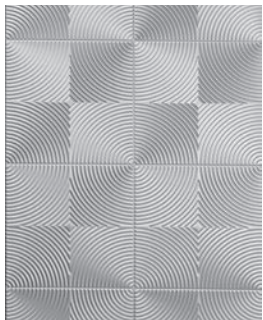
LINE THEM UP
VERTICAL



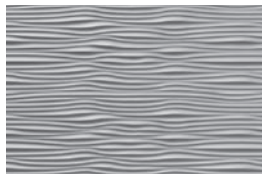
LINGUAL



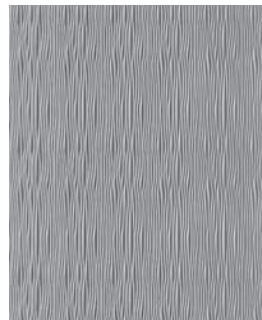
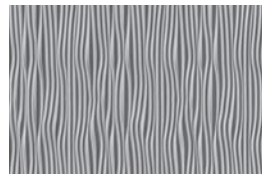
LOOK THIS WAY



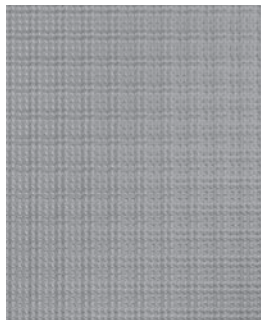
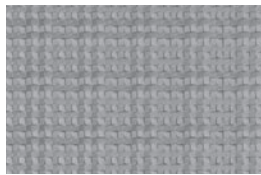
MACKENZIE



MEADOWS

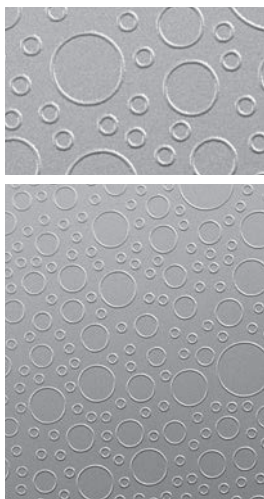


MEADOWS VERTICAL

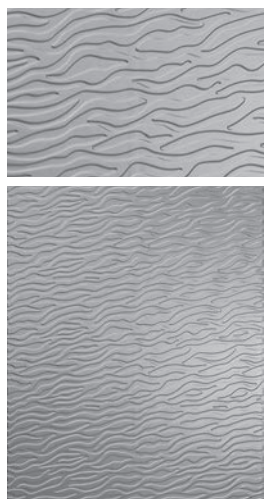


MINI METRO

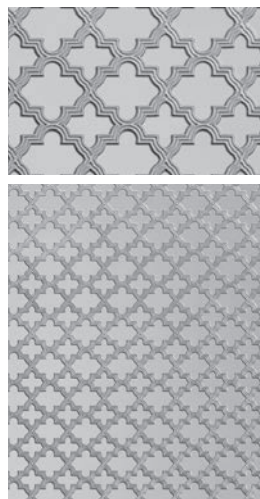




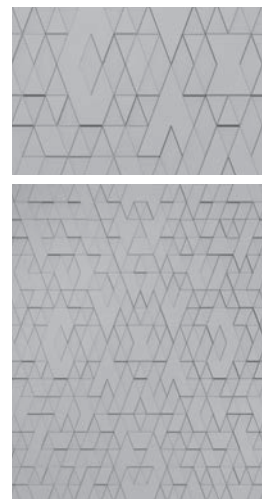
MOONWALK



NEMO



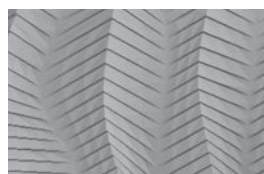
OH GEE!



PRESS PLAY



RAPPEL



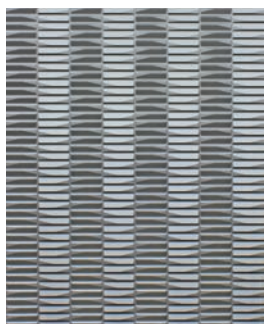
RIBFEST VERTICAL



RIVET



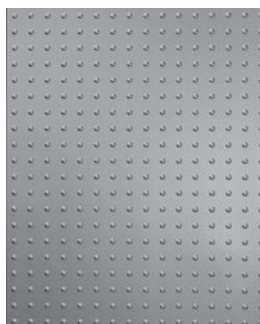
STELLAR



SIERRA



SIERRA VERTICAL

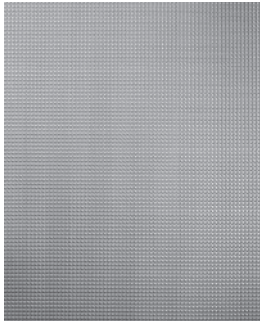
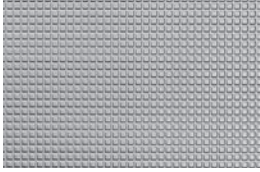


SMALL HAMMERED

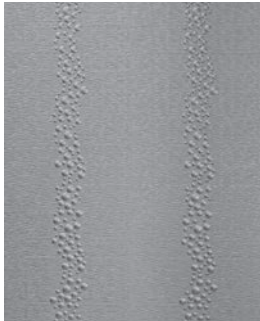
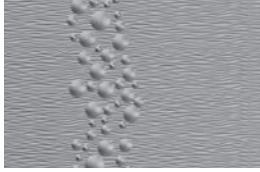


SONIC

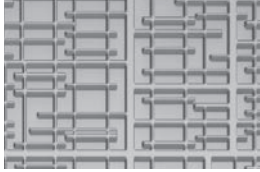




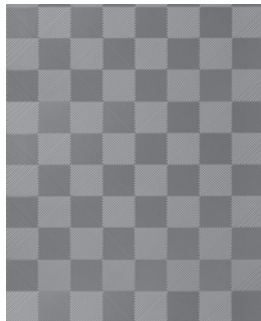
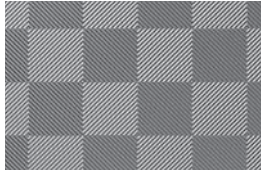
STITCH



SURF



TECHNO



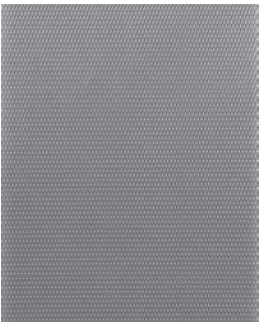
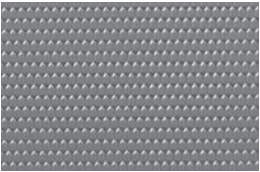
TETON



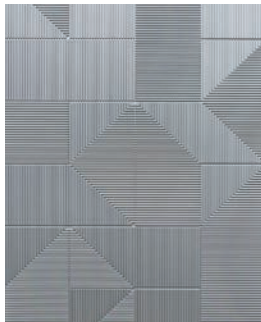
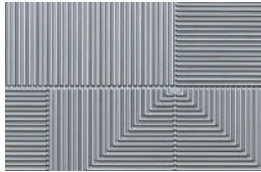
THISTLE



TOO HIP TO BE
SQUARE



TREAD



WAYFIND



WIRED

MDC FINISHES



High Traffic
Finish



Dimension Grid
Available



Scratch & Stain
Resistant Film
Added



Matching Trim
Available

46 standard finishes available on all
Dimension Walls patterns
or also available as flat sheets.

Custom colors available.

Color throughout finishes are
available for high traffic areas.

Scratch and stain resistant film added.
Available on noted finishes.

Matching trim is available for noted
finishes.

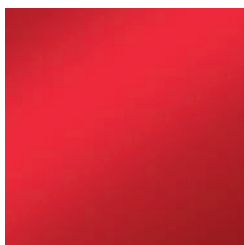
Eco finishes are made with
40% post-consumer recycled content.



METALLIC GOLD



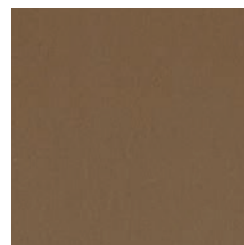
METALLIC GREEN



METALLIC RED





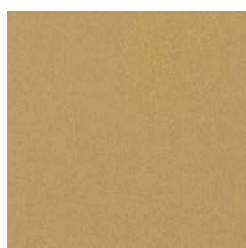
METALLIC SILVER 



BRONZE   



COPPER   



GOLD  



SILVER   



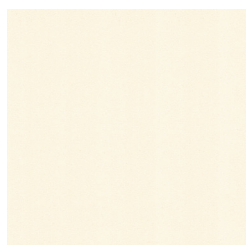
ALMOND  



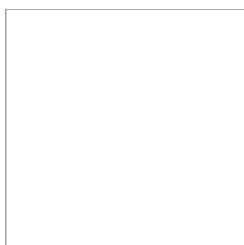
LILAC 



MARSALA 



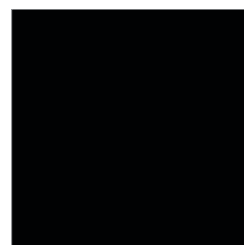
OFF WHITE  



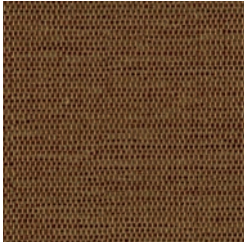
WHITE/
PAINTABLE  



ECO BEIGE  



ECO BLACK  



LINEN
CHESTNUT



LINEN ECRU



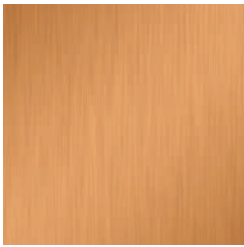
BRUSHED
ALUMINUM



BRUSHED
NICKEL



BRUSHED STAINLESS



NEW PENNY



RUBBED
BRONZE



BURGUNDY GRAIN



CHERRY



LIGHT OAK



MAPLE



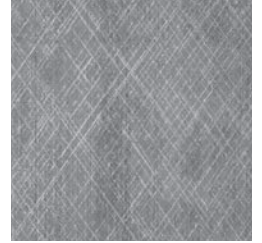
PEARWOOD



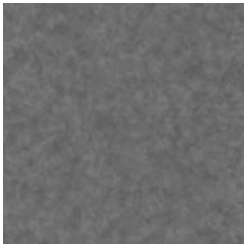
STAINED ASH



WALNUT



ETCHED
SILVER



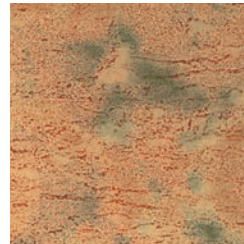
GALVANIZED



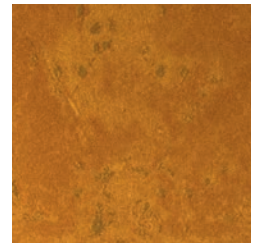
GUNMETAL



AGED
BRONZE



AGED
COPPER



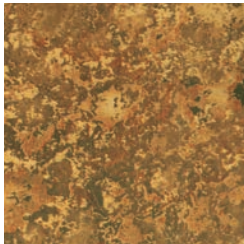
AGED
GOLD



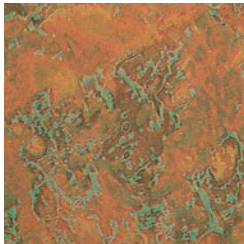
FINISHES CONTINUED



ANTIQUE
BRONZE



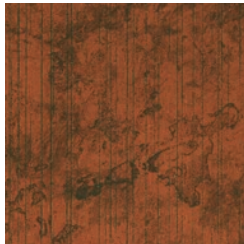
BRONZE PATINA



COPPER
PATINA



MARBLE



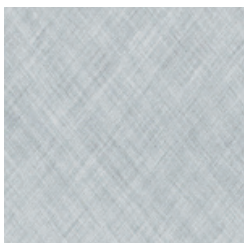
MOONSTONE
COPPER



STRIATED EBONY



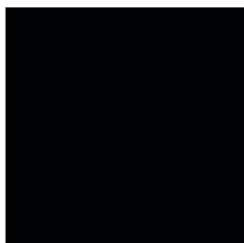
CRACKLE PATINA



SILVER CROSSHATCH



CARBON
BRUSHSTROKE



POLISHED EBONY



BURNISHED
BRUSHSTROKE



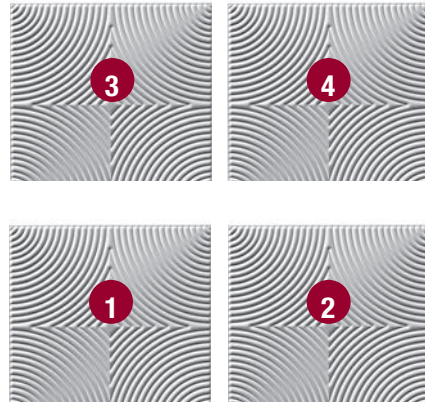
QUICK REFERENCE GUIDE

DESIGNS: 4' X 8' PANELS

PATTERN	EDGE OVERLAP	AVAILABLE IN 4' X 10'	PATTERN	EDGE OVERLAP	AVAILABLE IN 4' X 10'
ADIRONDACK	•	•	LARGE HAMMERED	•	•
ADIRONDACK VERTICAL	•	•	LINE THEM UP	•	•
ALEUTIAN	•	•	LINE THEM UP VERTICAL	•	•
ALLOY	•		LINGUAL	•	•
BLOSSOM	•		LOOK THIS WAY	•	•
CERAMIC SIMPLICITY	•		MACKENZIE	•	•
CIRCLE OF COOL	•		MEADOWS	•	•
CRACK ME UP	•	•	MEADOWS VERTICAL	•	•
CROSS STITCH	•	•	MINI METRO	•	•
CURTAIN CALL	•	•	MOONWALK		•
DROPLET			NEMO	•	
DUBAI	•	•	OH GEE!	•	•
ELLIPTICAL	•	•	PRESS PLAY	•	•
EXPANDED METRO	•	•	RAPPEL	•	•
FACETED	•	•	RIBFEST	•	•
FIRESIDE	•	•	RIBFEST VERTICAL	•	•
FLORAL VINE	•		RIVET		
FORE	•	•	SIERRA	•	•
GALLATIN	•	•	SIERRA VERTICAL	•	•
GALLATIN VERTICAL	•	•	SMALL HAMMERED	•	•
GANGES	•	•	SONIC	•	•
GANGES VERTICAL	•	•	STELLAR	•	
GROOVY	•	•	STITCH	•	
HALF PIPE	•	•	SURF	•	•
HAMMERED	•	•	TECHNO	•	•
HAMMERTIME	•	•	TETON	•	•
HAMMERTIME VERTICAL	•	•	THISTLE	•	
HOMESLICE	•	•	TOO HIP TO BE SQUARE	•	•
HONEYCOMB	•	•	TREAD		
HURLEY		•	WAYFIND	•	•
INFINITE	•	•	WIRED	•	
INTERLOCK	•	•			
KANDRA	•	•			
KENAI	•				

EDGE OVERLAP / BUILT IN OVERLAP (BIO)

Most Dimension Walls feature an Edge Overlap (BIO) on two sides of each panel. This feature minimizes the appearance of seams and makes installation easy with no need for trim or caulk between the panels. Wall panels with the overlap have a flat edge that extends beyond the texture across the top and right side.



High Traffic Patterns – low dimension and solid color.



HURLEY / ECO BLACK



High Traffic
Finish

INSTALLATION OVERVIEW

STORAGE

Store flat and acclimate the panel in the same environment for at least 24 hours before installation.

CUTTING

Dimension Walls can be easily cut using scissors or a utility knife.

ADHESIVES

Different adhesives and application techniques can be used to apply Dimension Walls. Please see MDC's technical information on our website (mdcwall.com).

PAINTABLE FINISH

Use an adhesion promoting primer and apply a commercial grade latex or oil based paint to create any color on the Dimension Walls.

EDGE OVERLAP - BIO (BUILT IN OVERLAP)

Two contiguous sides of each panel have an Edge Overlap (BIO) for overlapping consecutive sheets. This allows for a less visible seam. See diagram on page 33.

TRIM MOLDING

Dimension Walls trim (see page 37), millwork or other commercial trim pieces are available for finishing the panels.

CLEANING & CARE

Clean only with warm, soapy water. Never use abrasive cleaners or anything with harsh chemicals. A high quality auto polish may be used to help protect the finish.

PRODUCT SPECIFICATIONS

- Content: High Impact Thermoplastic.
- Sheet Size: 4' x 8' Wall Panels - some are available in 4' x 10' (All UPS Shippable).
- Low Profile Seam: 1/2" overlap feature on two sides provides a trim free, low profile seam. (Some Impact patterns may not have the overlap - refer to page 33).
- Thickness: 1/32" (.030) prior to forming. This is a dimensional product actual thickness varies.
- Weight: 8 lbs per 4' x 8' sheet.
- Custom Finishes: Available upon request. Minimums apply.
- Fire Rated: Dimension Walls meets the ASTM E-84 Class A fire rating.
- Abrasion Resistance: Taber ASTM D1044.
 - Patina with Protective Film – 4,700*
 - Solid Color – 5,000*
 - Eco – 1,000*
 - Painting the finish does not have the stain and abrasion resistance properties of the other finishes but it does retain impact resistance.
- *No Sign of Wear
- Impact Resistance: ASTM D5420 >2 inch lbs per mil of thickness.
- Solvent Resistance: 50 MEK.
- MEK Double Rubs/Crockmeter: Withstands 70 cycles.
- Humidity: 12 hrs 96-100% RH @ 40 degrees Celcius on MDF.
- Heat Resistance: Up to 140 degrees Fahrenheit (60 Celsius).
- UV Stability: Minimum 100 hours.
- ISO Certification: Manufacturing facility is 9001:2000 Certified.
- Made in the USA.
- Installation: Refer to mdcwall.com for complete installation instructions.
- Trim Molding: Molding is available to finish edges where required. See pages 26-28 for specific trim finish availability. Deeper patterns may require an alternate trim.

DIMENSION WALLS TRIM

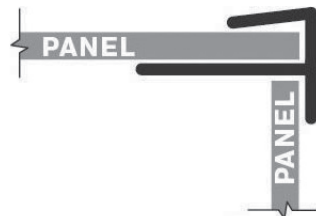
Edge J-Trim, Divider/Joint Trim, and Inside and Outside Corner Trims are available in 8' lengths and can be easily cut to size. Deeper patterns may require an alternate trim. Dimension Walls can also be finished with other aluminum, metal, or wood trim.



JST4501-4540
Divider/Joint Trim
Length: 8'



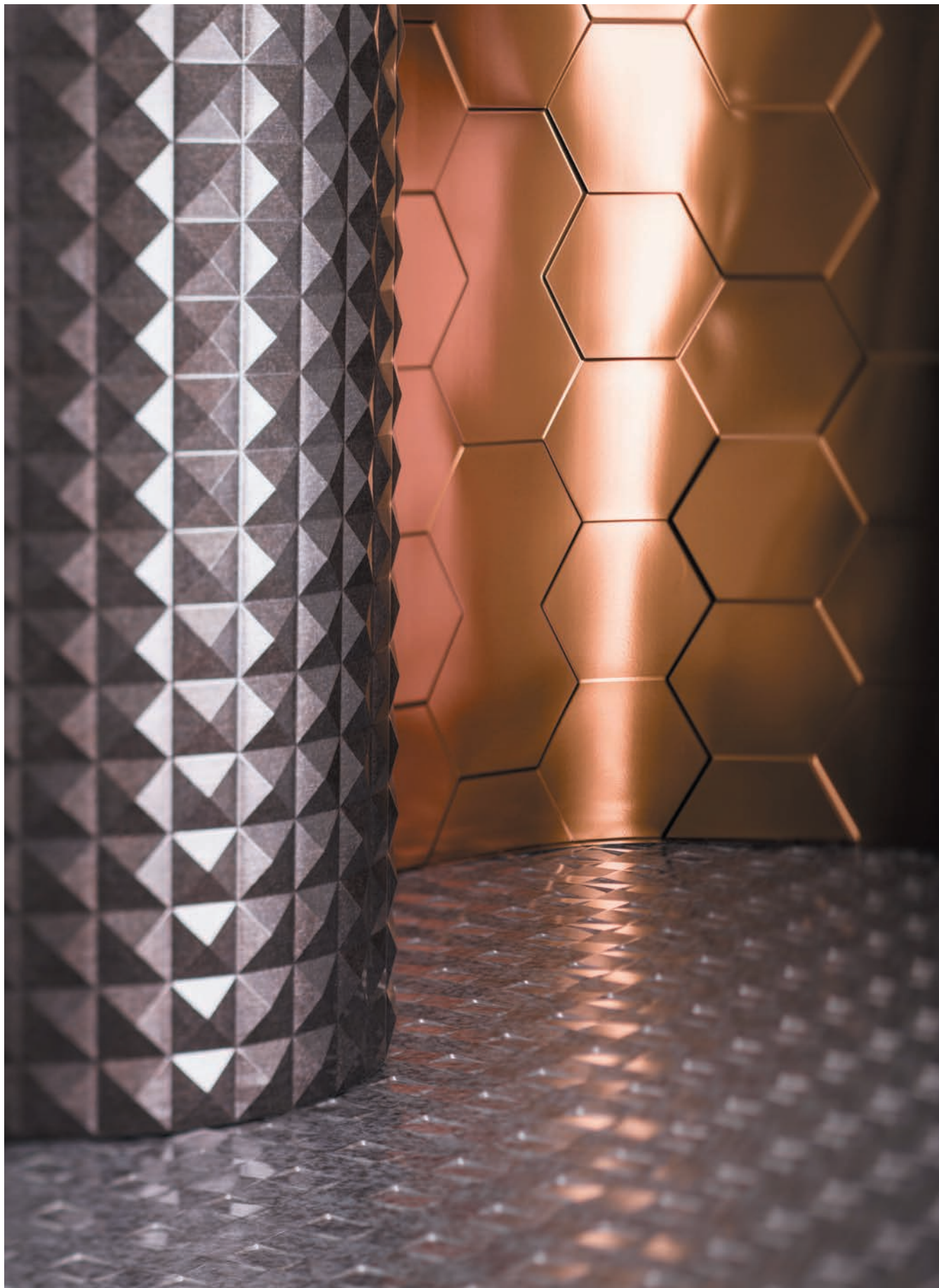
ICT1501-1540
Inside Corner Trim
Length: 8'



OCT2501-1540
Outside Corner Trim
Length: 8'



EJT3501-3540
Edge J-Trim
Length: 8'



PILLAR - PYRAMID / ETCHED SILVER

BACK WALL - HONEYCOMB / NEW PENNY



CRACK ME UP / GALVANIZED



RIBFEST / GALVANIZED



EXPANDED METRO / GALVANIZED

Koffler Sales Company

785 Oakwood Road
Suite C-101
Lake Zurich, IL 60047-1524

Toll-Free: 888-727-1475

Phone: 1-847-438-1152

Fax: 1-847-438-1514

<https://www.kofflersales.com>