

92490 Electrify



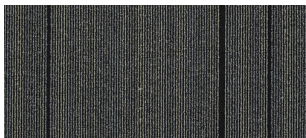
92495 Jolted



92593 Magnetize



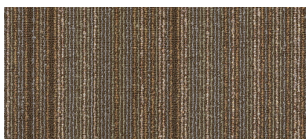
92597 Connected



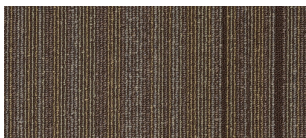
92598 Startled



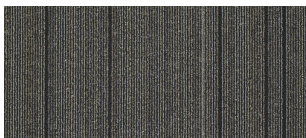
92690 Juice



92790 Energize



92791 Charged



92795 Spark

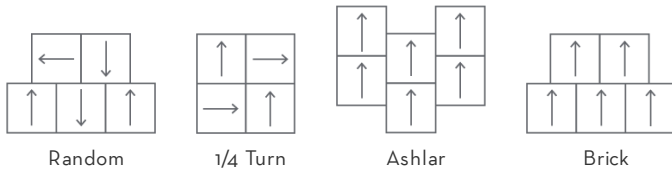


92595 Shocked

Style Name	WIRED	
Collection Name	Link	
Style Number	54492	
Product Type	Carpet Tile	
Fiber	100% Eco Solution Q100™ Nylon	
Dye Method	Solution Dyed	
Primary Backing	Synthetic	
Traffic Rating	Severe	
Protective Treatments	SSP Protective Treatments	
	U.S.	Metric
Product Size	24 in x 24 in	6096 cm x 6096 cm
Area Per Carton	48 ft²	4.46 m²
Pieces Per Carton	12	
Gauge	1/10 in	3937 per 10 cm
Stitches	9 per in	33 per 10 cm
Finished Pile Thickness	0.094 in	2.39 mm
Average Density	5362 oz/yd³	
Total Thickness	0.246 in	6.25 mm
Tufted Weight	14 oz/yd²	474.7 g/m²
GSA Approved Product	Yes	



Recommended Installation Methods



Performance Testing

Pill Test	Pass
Radiant Panel	Class I
NBS Smoke	Less than 450
Electrostatic Propensity	Less than 3.5 kv
CRI Greenlabel Plus	GLP9968
ADA Compliance	>0.6, meets the recommended static coefficient of friction for ADA walking surfaces and accessible routes

Test Reports may be included or listed by the manufacturing/inventory style number as opposed to the noted selling style number.

Warranties

Carpet Tile Lifetime Commercial Limited Warranty with Stain and Color

Specifications are subject to nominal manufacturing variance. Material supply and/or manufacturing processes may necessitate changes without notice.