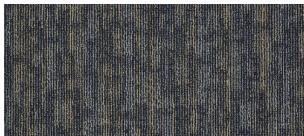
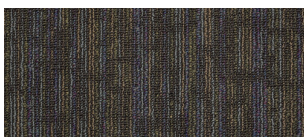


91490 Electrify



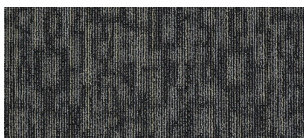
91495 Jolted



91593 Magnetize



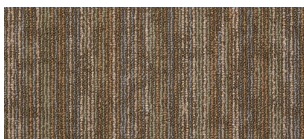
91597 Connected



91598 Startled



91690 Juice



91790 Energize



91791 Charged



91795 Spark

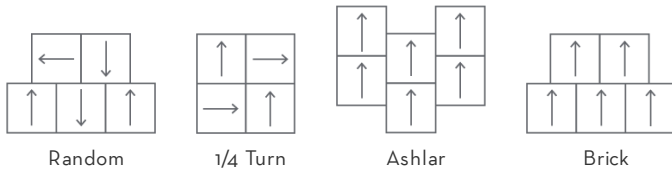


91595 Shocked

Style Name	HOOK UP	
Collection Name	Link	
Style Number	54491	
Product Type	Carpet Tile	
Fiber	100% Eco Solution Q100™ Nylon	
Dye Method	SOLUTION DYED	
Primary Backing	Synthetic	
Secondary Backing	Ecoworx	
Traffic Rating	Heavy	
Protective Treatments	SSP Protective Treatments	
	U.S.	Metric
Product Size	24 in x 24 in	60.96 cm x 60.96 cm
Area Per Carton	48 ft²	4.46 m²
Pieces Per Carton	12	
Gauge	1/10 in	39.37 per 10 cm
Stitches	8 per in	30 per 10 cm
Finished Pile Thickness	0.132 in	3.35 mm
Average Density	4091 oz/yd³	
Total Thickness	0.271 in	6.88 mm
Tufted Weight	15 oz/yd²	508.6 g/m²



Recommended Installation Methods



Performance Testing

Pill Test	Pass
Radiant Panel	Class I
NBS Smoke	Less than 450
Electrostatic Propensity	Less than 3.5 kv
CRI Greenlabel Plus	GLP9968
ADA Compliance	>0.6, meets the recommended static coefficient of friction for ADA walking surfaces and accessible routes

Test Reports may be included or listed by the manufacturing/inventory style number as opposed to the noted selling style number.

Warranties

Carpet Tile Lifetime Commercial Limited Warranty with Stain and Color

Environmental

Recycled Content **Pre-consumer - 39%, Post-consumer - 0%**

Specifications are subject to nominal manufacturing variance. Material supply and/or manufacturing processes may necessitate changes without notice.