



Koffler Sales Company

Specialists in Floor and Wall Protection
For Over 50 Years!

Steel-Face Dock Bumpers
Model: B610-14SF

MODEL: *B610-14SF*

Size

Projection 6-5/8"

Height 10"

Length:

-Overall 16"

-Anchor Holes 14"

-Rubber 10"

Angle Size (2) 1/4"x3"x4"x9-1/2"

Slot Angle Size (2) 1/4"x3"x4"x10"

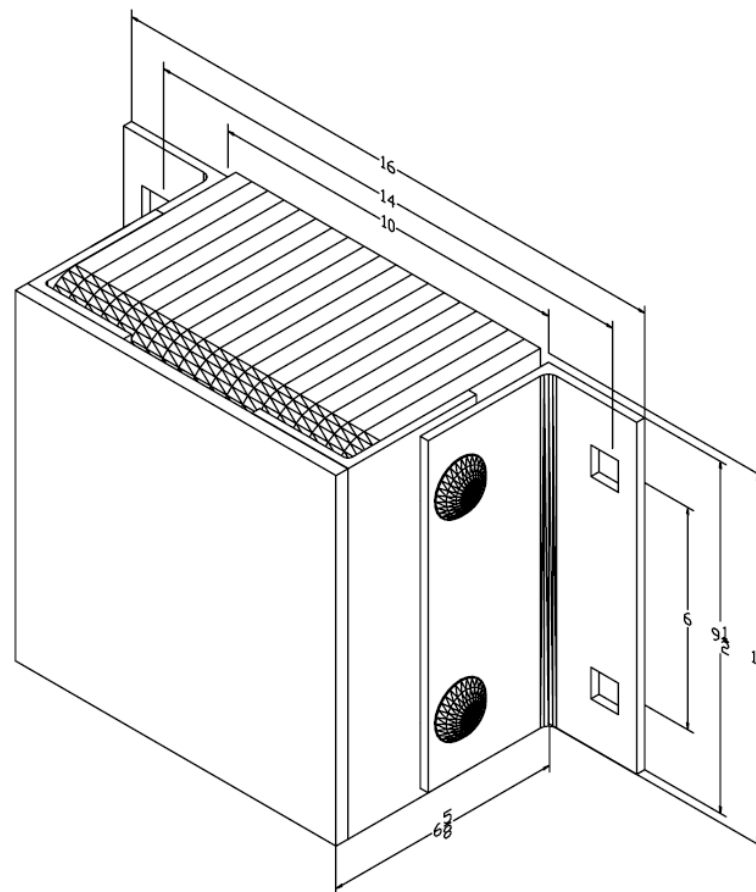
Face Plate Size (1) 3/8"x7"x10"

Bolt Heads Are Inscribed

"DURABLE CORP"

Date: 11/05/07

All measurements are +/- 1/8"





Koffler Sales Company

Specialists in Floor and Wall Protection
For Over 50 Years!

Steel-Face Dock Bumpers

Model: B610-14SFP1

MODEL: *B610-14SFP1*

Size

Projection 6-5/8"

Height 10"

Length:

-Overall 13-1/4"

-Rubber 10"

Angle Size 1/4"x3"x4"x9-1/2"

Plate Size 1/4"x4"x9-1/2"

Slot Angle Size (2) 1/4"x3"x4"x10"

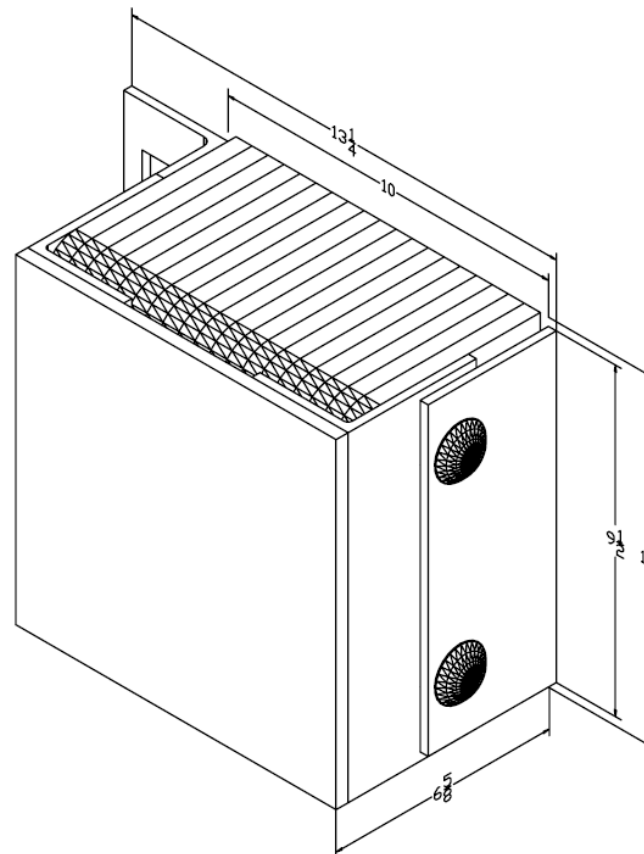
Face Plate Size (1) 3/8"x7"x10"

Bolt Heads Are Inscribed

"DURABLE CORP"

Date: 11/05/07

All measurements are +/- 1/8"





Koffler Sales Company

Specialists in Floor and Wall Protection
For Over 50 Years!

Steel-Face Dock Bumpers
Model: B610-18-SF

MODEL: *B610-18-SF*

Size

Projection 6-5/8"
Height 10"

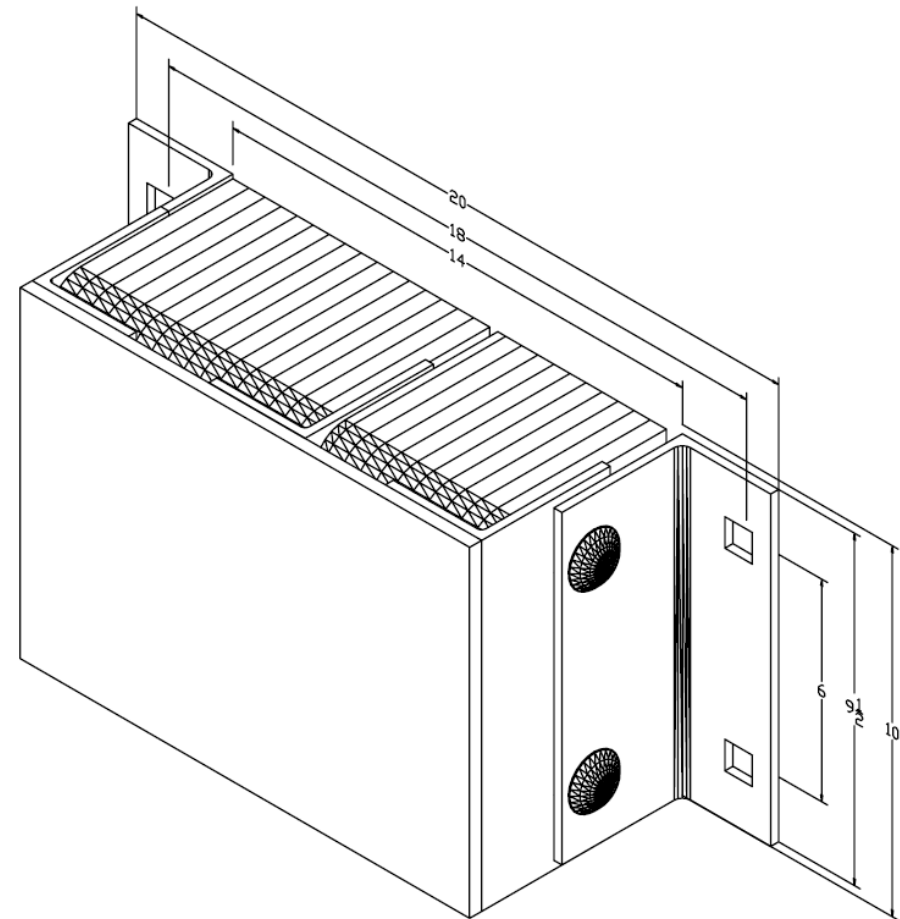
Length:

-Overall 20"
-Anchor Holes 18"
-Rubber 14"
Angle Size (2) 1/4"x3"x4"x9-1/2"
Slot Angle Size 1/4"x3"x4"x9-1/2"
Face Plate Size (1) 3/8"x10"x14"

Bolt Heads Are Inscribed
"DURABLE CORP"

Date: 04/07/09

All measurements are +/- 1/8"





Koffler Sales Company

Specialists in Floor and Wall Protection
For Over 50 Years!

Steel-Face Dock Bumpers

Model: B610-18-SFP1

MODEL: *B610-18-SFP1*

Size

Projection 6-5/8"

Height 10"

Length:

-Overall 17-1/4"

-Rubber 14"

Angle Size (1) 1/4"x3"x4"x9-1/2"

Plate Size (1) 1/4"x4"x9-1/2"

Slot Angle Size 1/4"x3"x4"x9-1/2"

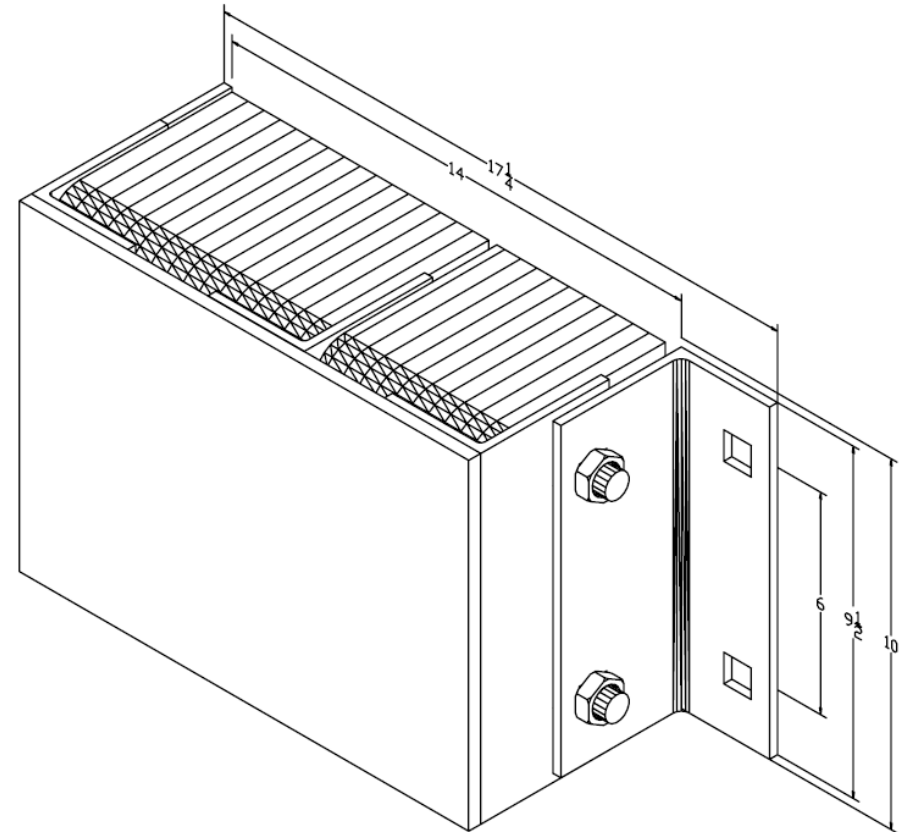
Face Plate Size (1) 3/8"x10"x14"

Bolt Heads Are Inscribed

"DURABLE CORP"

Date: 04/07/09

All measurements are +/- 1/8"





Koffler Sales Company

Specialists in Floor and Wall Protection
For Over 50 Years!

Steel-Face Dock Bumpers
Model: B610-24-SF

MODEL: *B610-24-SF*

Size

Projection 6-5/8"

Height 10"

Length:

-Overall 26"

-Anchor Holes 24"

-Rubber 20"

Angle Size (2) 1/4"x3"x4"x9-1/2"

Slot Angle Size 1/4"x3"x4"x9-1/2"

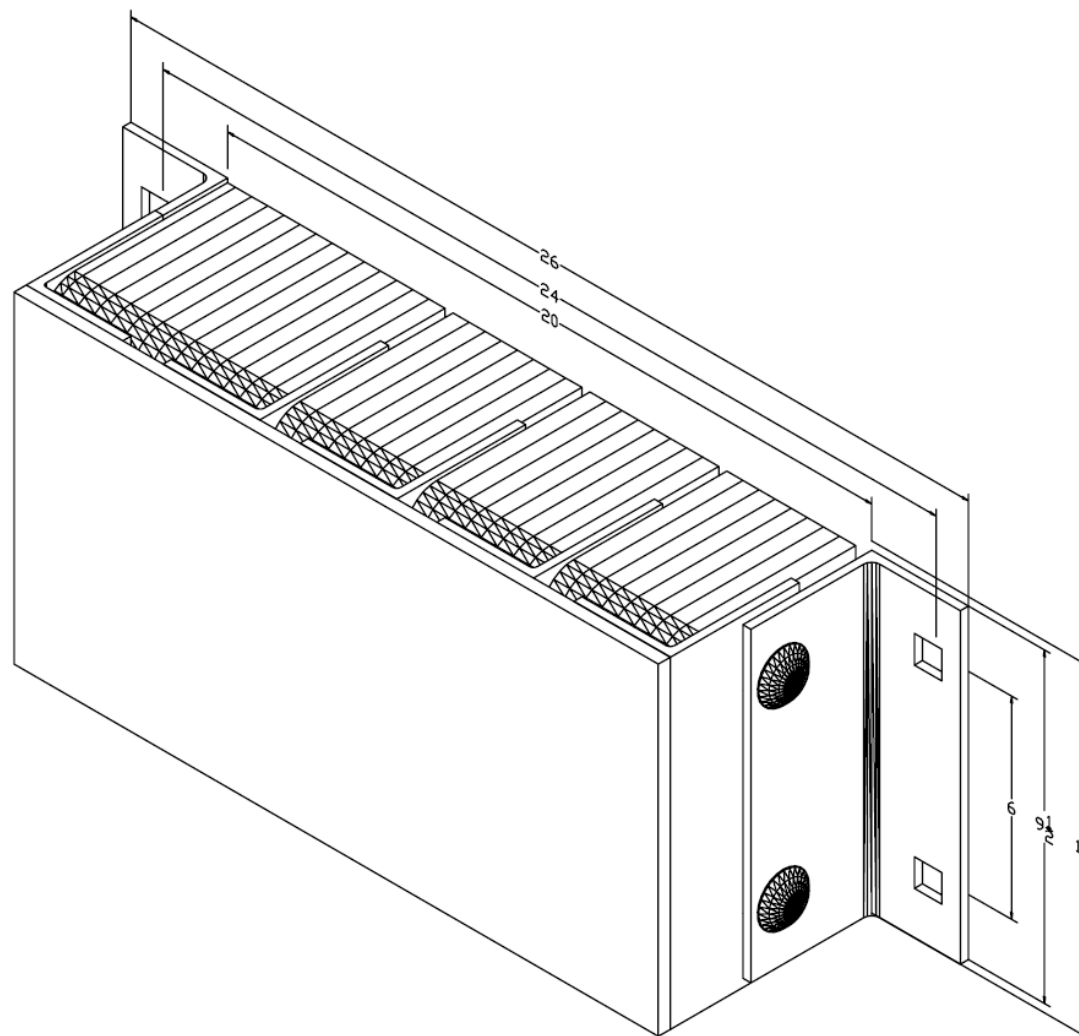
Face Plate Size (1) 3/8"x10"x20"

Bolt Heads Are Inscribed

"DURABLE CORP"

Date: 04/07/09

All measurements are +/- 1/8"





Koffler Sales Company

Specialists in Floor and Wall Protection
For Over 50 Years!

Steel-Face Dock Bumpers

Model: B610-24-SFP1

MODEL: *B610-24-SFP1*

Size

Projection 6-5/8"

Height 10"

Length:

-Overall 23-1/4"

-Rubber 20"

Angle Size (1) 1/4"x3"x4"x9-1/2"

Plate Size (1) 1/4"x4"x9-1/2"

Slot Angle Size 1/4"x3"x4"x9-1/2"

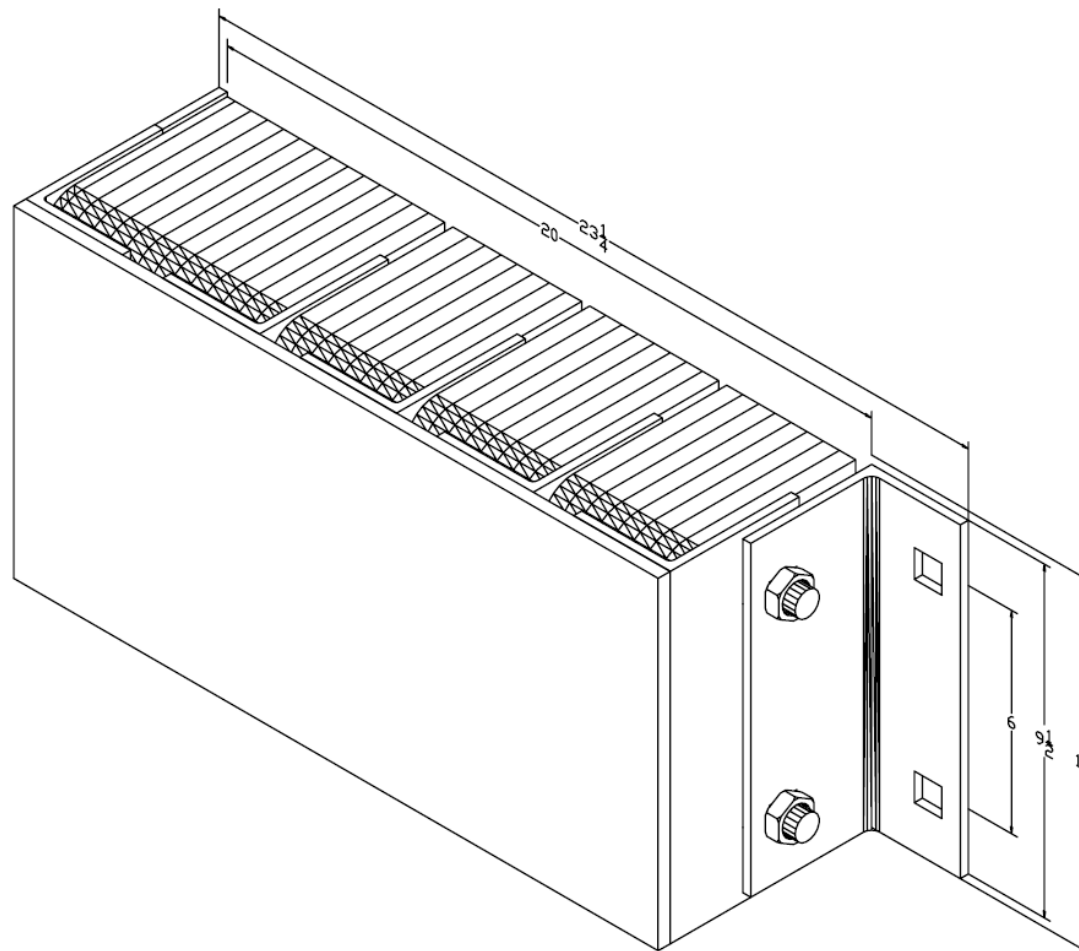
Face Plate Size (1) 3/8"x10"x20"

Bolt Heads Are Inscribed

"DURABLE CORP"

Date: 04/07/09

All measurements are +/- 1/8"





Koffler Sales Company

Specialists in Floor and Wall Protection
For Over 50 Years!

Steel-Face Dock Bumpers
Model: B610-36-SF

MODEL: *B610-36-SF*

Size

Projection 6-5/8"
Height 10"

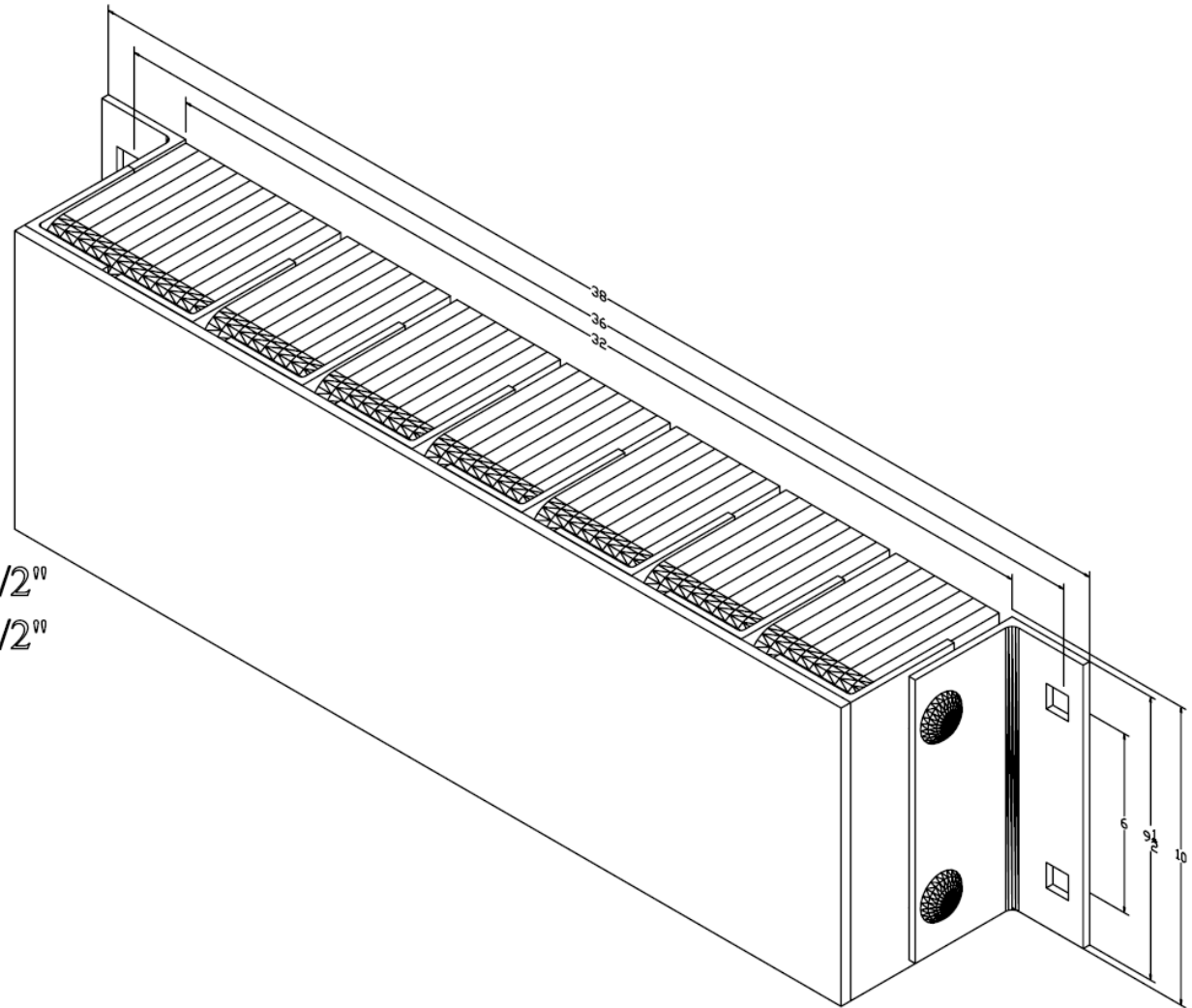
Length:

-Overall 38"
-Anchor Holes 36"
-Rubber 32"
Angle Size (2) 1/4"x3"x4"x9-1/2"
Slot Angle Size 1/4"x3"x4"x9-1/2"
Face Plate Size (1) 3/8"x10"x32"

Bolt Heads Are Inscribed
"DURABLE CORP"

Date: 04/07/09

All measurements are +/- 1/8"





Koffler Sales Company

Specialists in Floor and Wall Protection
For Over 50 Years!

Steel-Face Dock Bumpers

Model: B610-36-SFP1

MODEL: *B610-36-SFP1*

Size

Projection 6-5/8"

Height 10"

Length:

-Overall 35-1/4"

-Rubber 32"

Angle Size (1) 1/4"x3"x4"x9-1/2"

Plate Size (1) 1/4"x4"x9-1/2"

Slot Angle Size 1/4"x3"x4"x9-1/2"

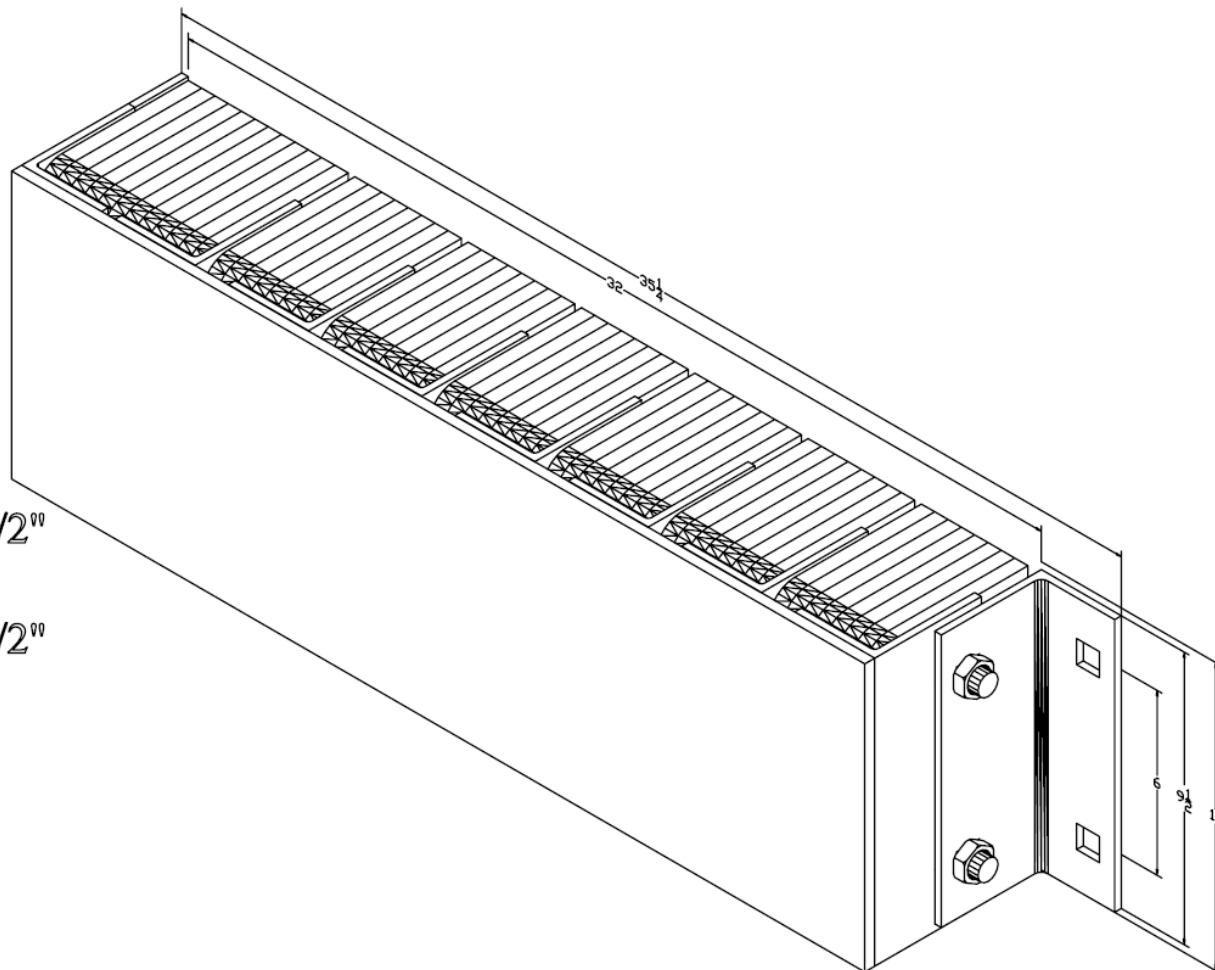
Face Plate Size (1) 3/8"x10"x32"

Bolt Heads Are Inscribed

"DURABLE CORP"

Date: 04/07/09

All measurements are +/- 1/8"





Koffler Sales Company

Specialists in Floor and Wall Protection
For Over 50 Years!

Steel-Face Dock Bumpers
Model: B612-14-SF

MODEL: *B612-14-SF*

Size

Projection 6-5/8"

Height 12"

Length:

-Overall 16"

-Anchor Holes 14"

-Rubber 10"

Angle Size (2) 1/4"x3"x4"x11-1/2"

Slot Angle Size 1/4"x3"x4"x11-1/2"

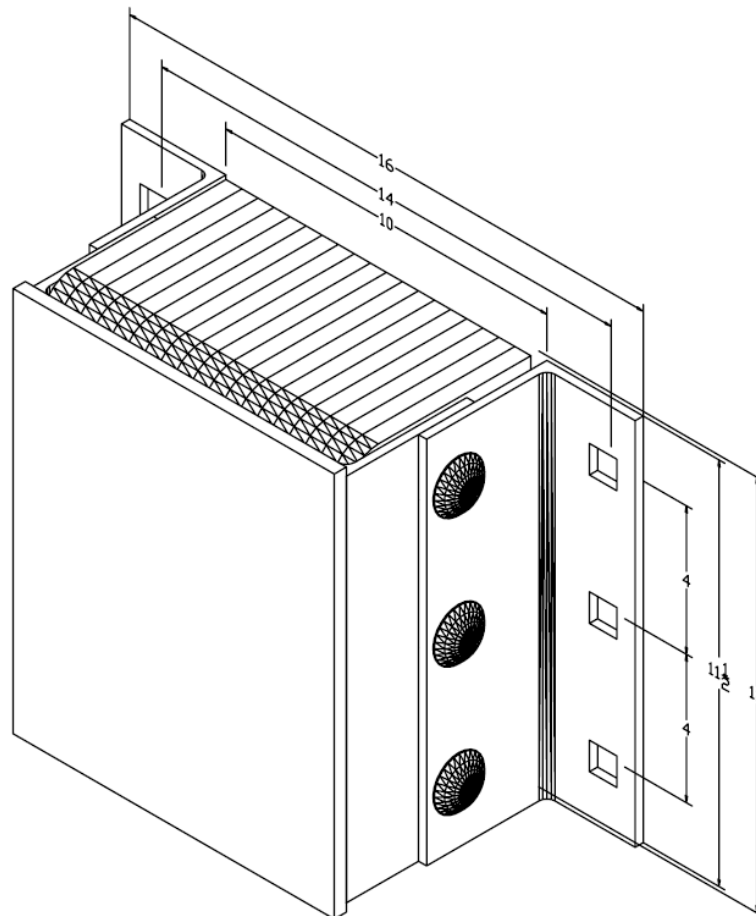
Face Plate Size (1) 3/8"x12"x10"

Bolt Heads Are Inscribed

"DURABLE CORP"

Date: 04/07/09

All measurements are +/- 1/8"





Koffler Sales Company

Specialists in Floor and Wall Protection
For Over 50 Years!

Steel-Face Dock Bumpers

Model: B612-14-SFP1

MODEL: *B612-14-SFP1*

Size

Projection 6-5/8"

Height 12"

Length:

-Overall 13-1/4"

-Rubber 10"

Angle Size (1) 1/4"x3"x4"x11-1/2"

Plate Size (1) 1/4"x4"x11-1/2"

Slot Angle Size 1/4"x3"x4"x11-1/2"

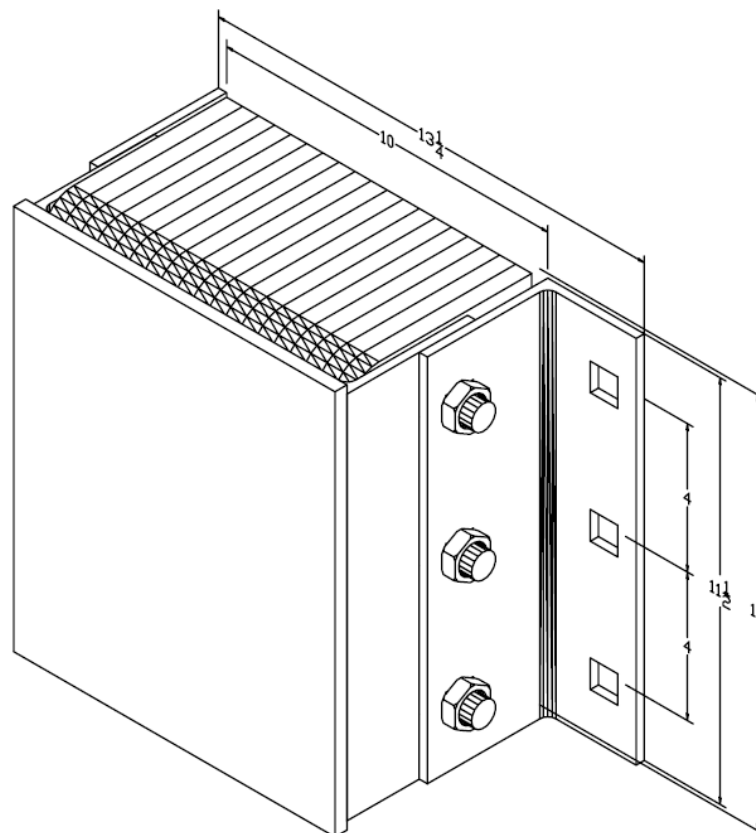
Face Plate Size (1) 3/8"x12"x10"

Bolt Heads Are Inscribed

"DURABLE CORP"

Date: 04/07/09

All measurements are +/- 1/8"





Koffler Sales Company

Specialists in Floor and Wall Protection
For Over 50 Years!

Steel-Face Dock Bumpers
Model: B612-18-SF

MODEL: *B612-18-SF*

Size

Projection 6-5/8"
Height 12"

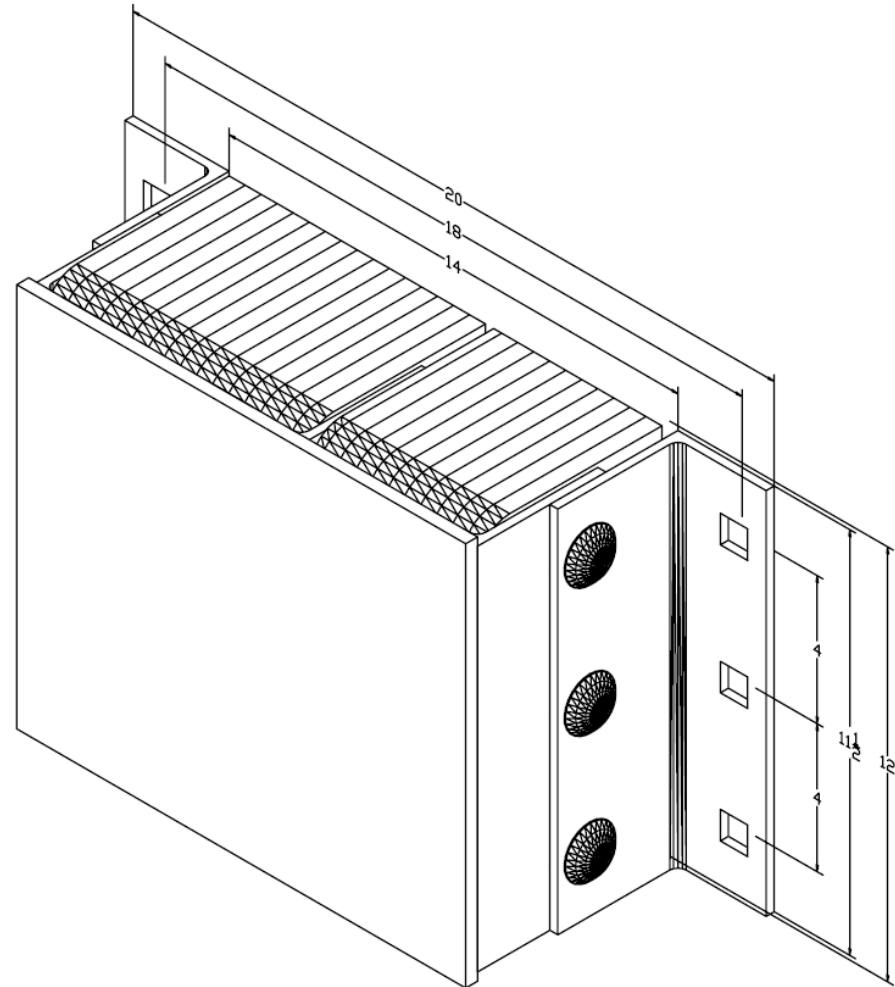
Length:

-Overall 20"
-Anchor Holes 18"
-Rubber 14"
Angle Size (2) 1/4"x3"x4"x11-1/2"
Slot Angle Size 1/4"x3"x4"x11-1/2"
Face Plate Size (1) 3/8"x12"x14"

Bolt Heads Are Inscribed
"DURABLE CORP"

Date: 04/07/09

All measurements are +/- 1/8"





Koffler Sales Company

Specialists in Floor and Wall Protection
For Over 50 Years!

Steel-Face Dock Bumpers

Model: B612-18-SFP1

MODEL: *B612-18-SFP1*

Size

Projection 6-5/8"

Height 12"

Length:

-Overall 17-1/4"

-Rubber 14"

Angle Size (1) 1/4"x3"x4"x11-1/2"

Plate Size (1) 1/4"x4"x11-1/2"

Slot Angle Size 1/4"x3"x4"x11-1/2"

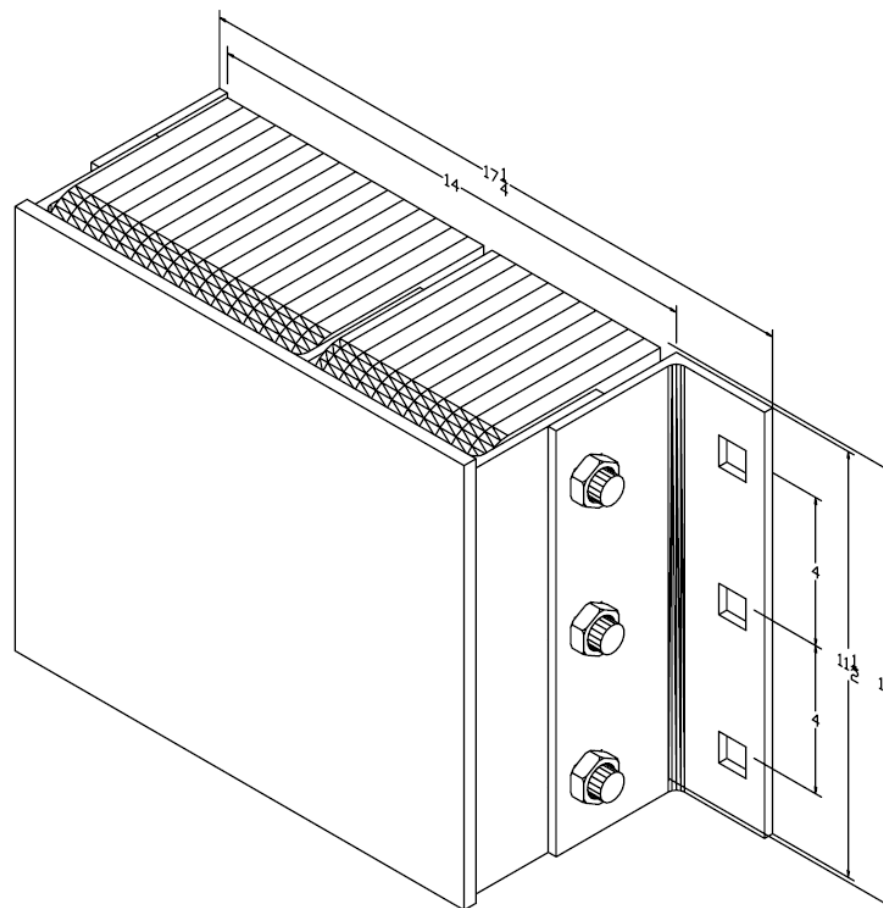
Face Plate Size (1) 3/8"x12"x14"

Bolt Heads Are Inscribed

"DURABLE CORP"

Date: 04/07/09

All measurements are +/- 1/8"





Koffler Sales Company

Specialists in Floor and Wall Protection
For Over 50 Years!

Steel-Face Dock Bumpers
Model: B612-24SF

MODEL: *B612-24SF*

Size

Projection 6-5/8"

Height 12"

Length:

-Overall 26"

-Anchor Holes 24"

-Rubber 20"

Angle Size (2) 1/4"x3"x4"x11-1/2"

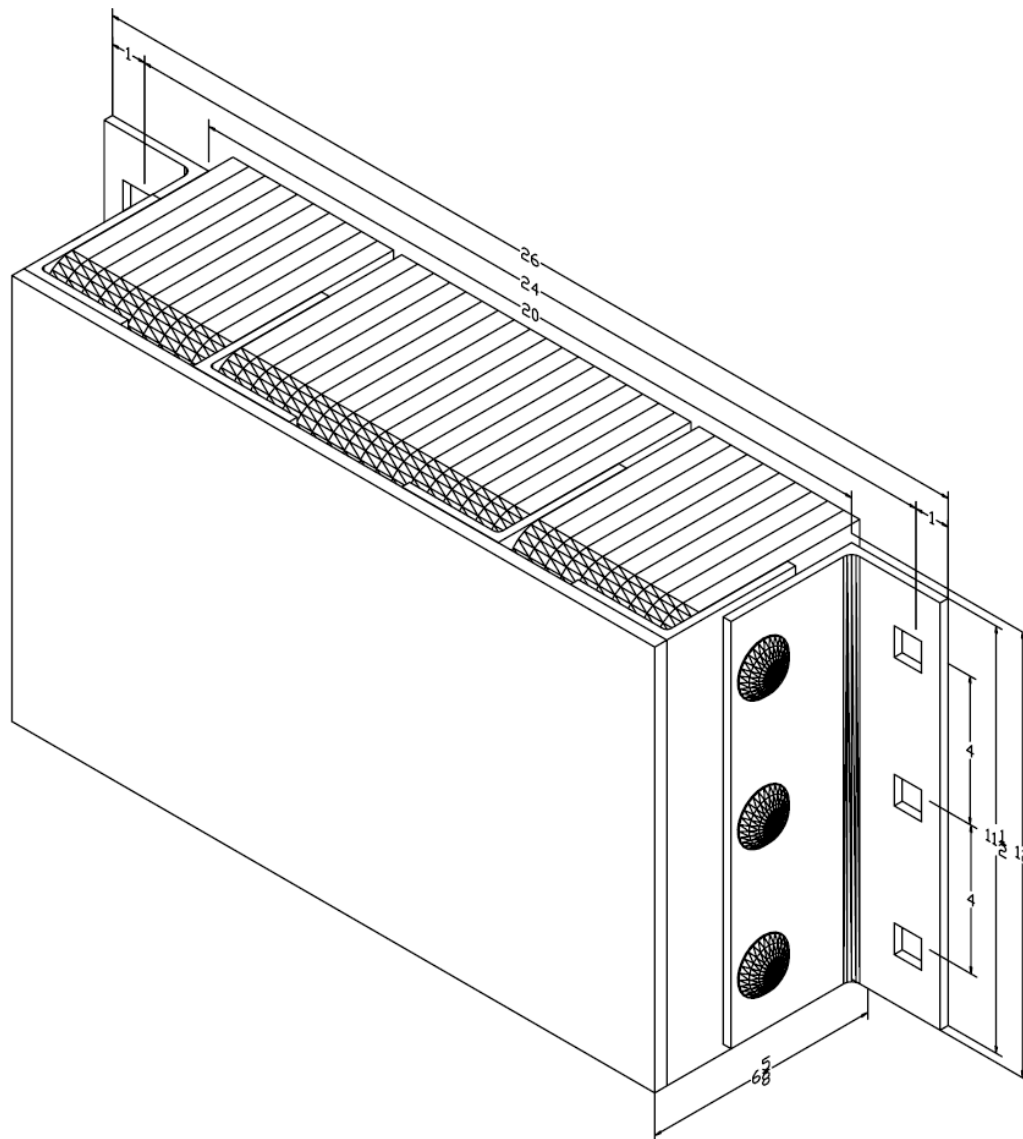
Slot Angle Size (4) 1/4"x3"x4"x12"

Face Plate Size (1) 3/8"x12"x20"

Bolt Heads Are Inscribed
"DURABLE CORP"

Date: 05/12/08

All measurements are +/- 1/8"





Koffler Sales Company

Specialists in Floor and Wall Protection
For Over 50 Years!

Steel-Face Dock Bumpers

Model: B612-24-SFP1

MODEL: *B612-24-SFP1*

Size

Projection 6-5/8"
Height 12"

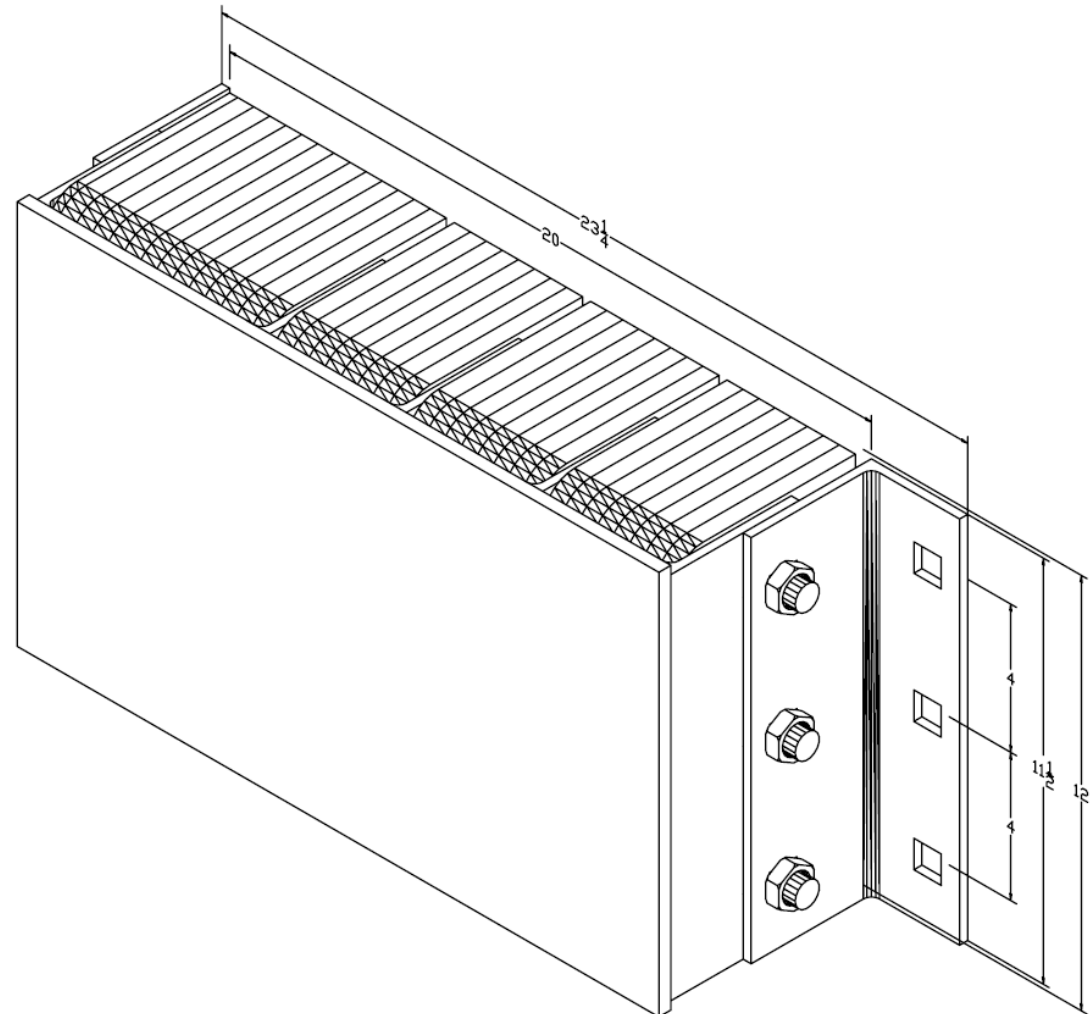
Length:

-Overall 23-1/4"
-Rubber 20"
Angle Size (1) 1/4"x3"x4"x11-1/2"
Plate Size (1) 1/4"x4"x11-1/2"
Slot Angle Size 1/4"x3"x4"x11-1/2"
Face Plate Size (1) 3/8"x12"x20"

Bolt Heads Are Inscribed
"DURABLE CORP"

Date: 04/07/09

All measurements are +/- 1/8"





Koffler Sales Company

Specialists in Floor and Wall Protection
For Over 50 Years!

Steel-Face Dock Bumpers
Model: B612-36-SF

MODEL: *B612-36-SF*

Size

Projection 6-5/8"
Height 12"

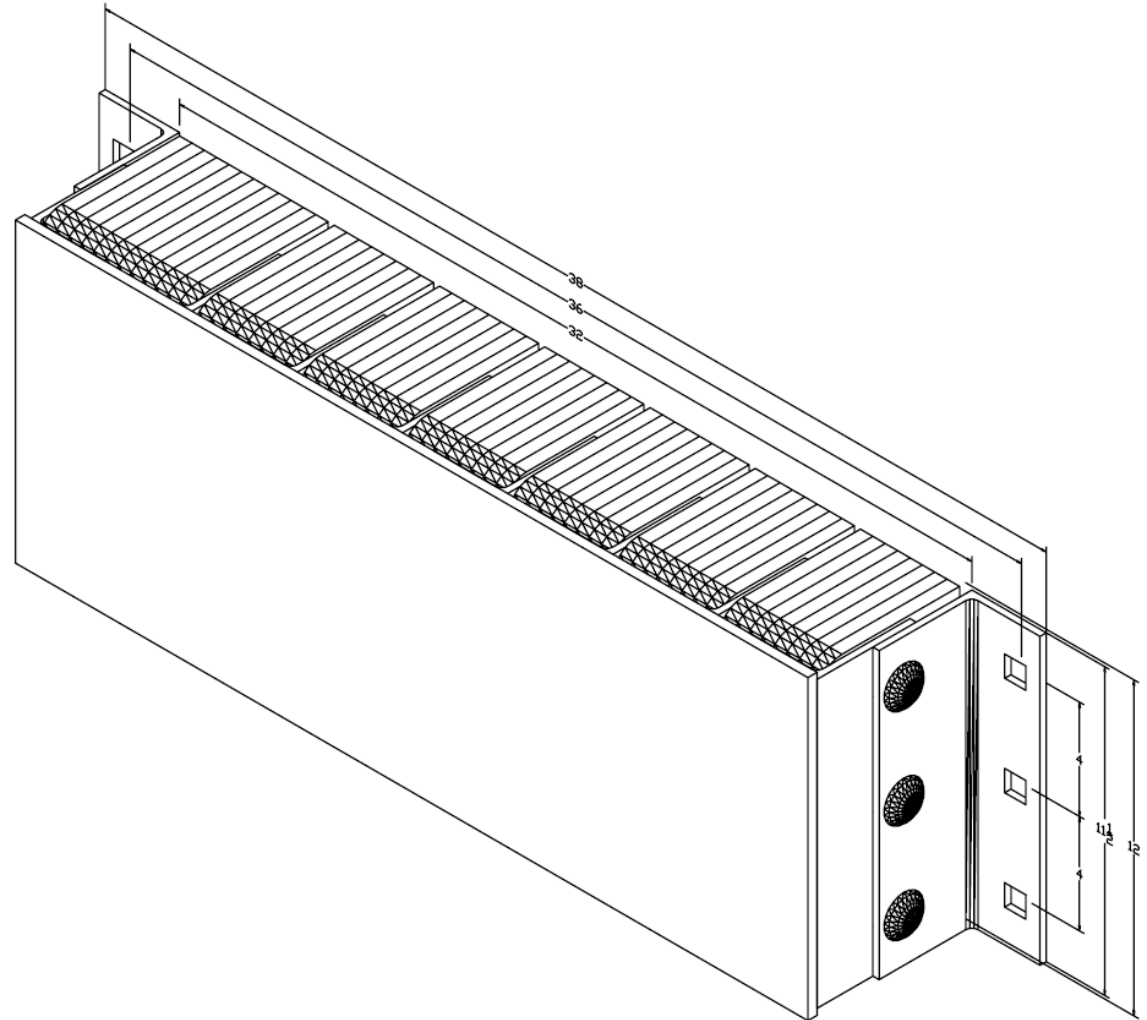
Length:

-Overall 38"
-Anchor Holes 36"
-Rubber 32"
Angle Size (2) 1/4"x3"x4"x11-1/2"
Slot Angle Size 1/4"x3"x4"x11-1/2"
Face Plate Size (1) 3/8"x12"x32"

Bolt Heads Are Inscribed
"DURABLE CORP"

Date: 04/07/09

All measurements are +/- 1/8"





Koffler Sales Company

Specialists in Floor and Wall Protection
For Over 50 Years!

Steel-Face Dock Bumpers

Model: B612-36-SFP1

MODEL: *B612-36-SFP1*

Size

Projection 6-5/8"
Height 12"

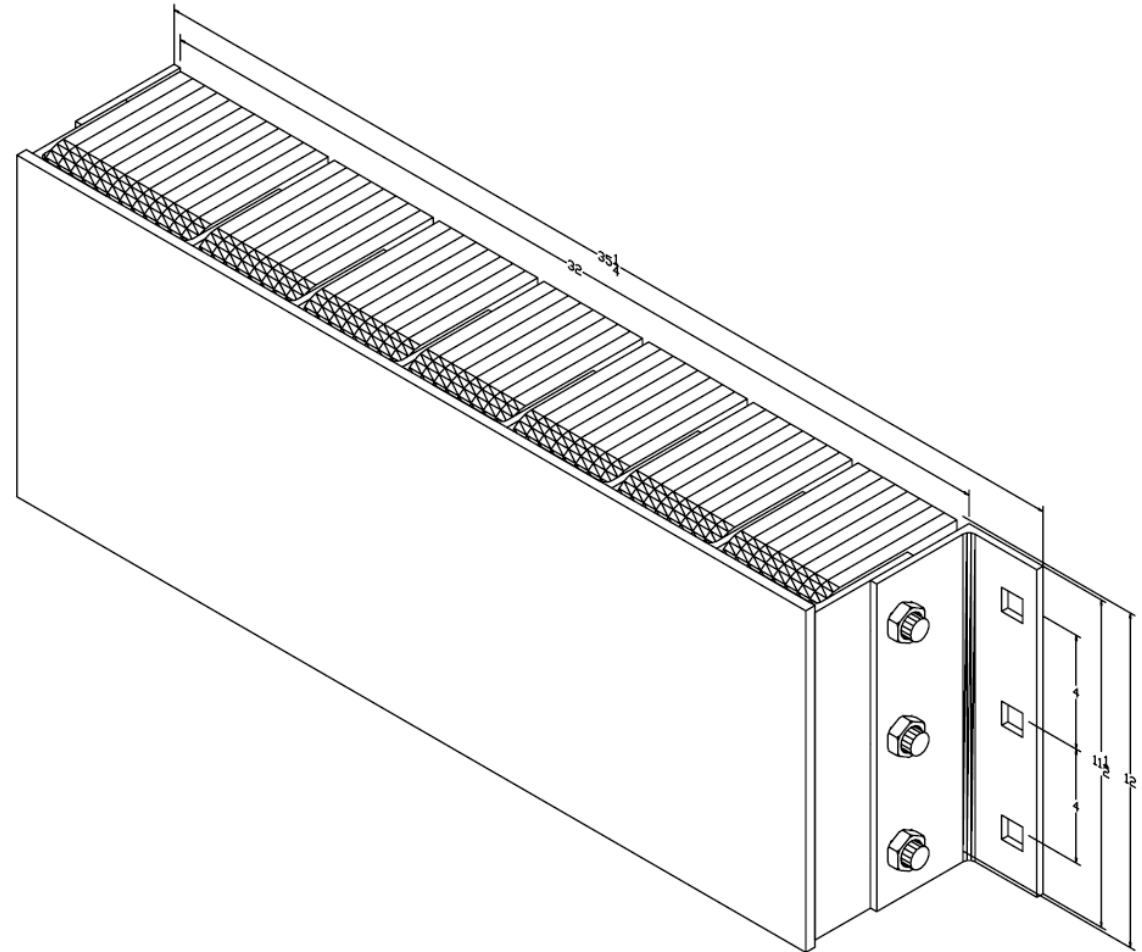
Length:

-Overall 35-1/4"
-Rubber 32"
Angle Size (1) 1/4"x3"x4"x11-1/2"
Plate Size (1) 1/4"x4"x11-1/2"
Slot Angle Size 1/4"x3"x4"x11-1/2"
Face Plate Size (1) 3/8"x12"x32"

Bolt Heads Are Inscribed
"DURABLE CORP"

Date: 04/07/09

All measurements are +/- 1/8"





Koffler Sales Company

Specialists in Floor and Wall Protection
For Over 50 Years!

Steel-Face Dock Bumpers

Model: B620-11SF

MODEL: *B620-11SF*

Size

Projection 6-5/8"

Height 20"

Length:

-Overall 13"

-Anchor Holes 11"

-Rubber 7"

Angle Size (2) 1/4"x3"x4"x19-1/2"

Slot Angle Size (2) 1/4"x3"x4"x20"

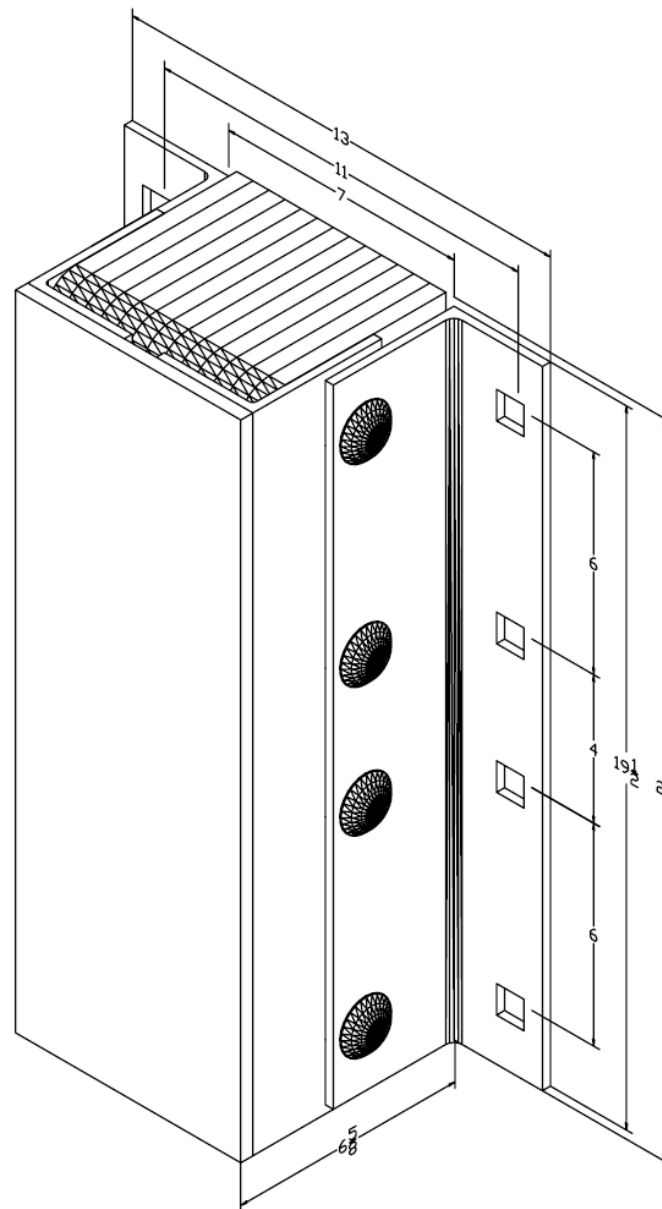
Face Plate Size (1) 3/8"x7"x20"

Bolt Heads Are Inscribed

"DURABLE CORP"

Date: 11/05/07

All measurements are +/- 1/8"





Koffler Sales Company

Specialists in Floor and Wall Protection
For Over 50 Years!

Steel-Face Dock Bumpers

Model: B620-11-SFP1

MODEL: B620-11-SFP1

Size

Projection 6-5/8"

Height 20"

Length:

-Overall 10-1/4"

-Rubber 7"

Angle Size (1) 1/4"x3"x4"x19-1/2"

Plate Size (1) 1/4"x4"x19-1/2"

Slot Angle Size (2) 1/4"x3"x4"x19-1/2"

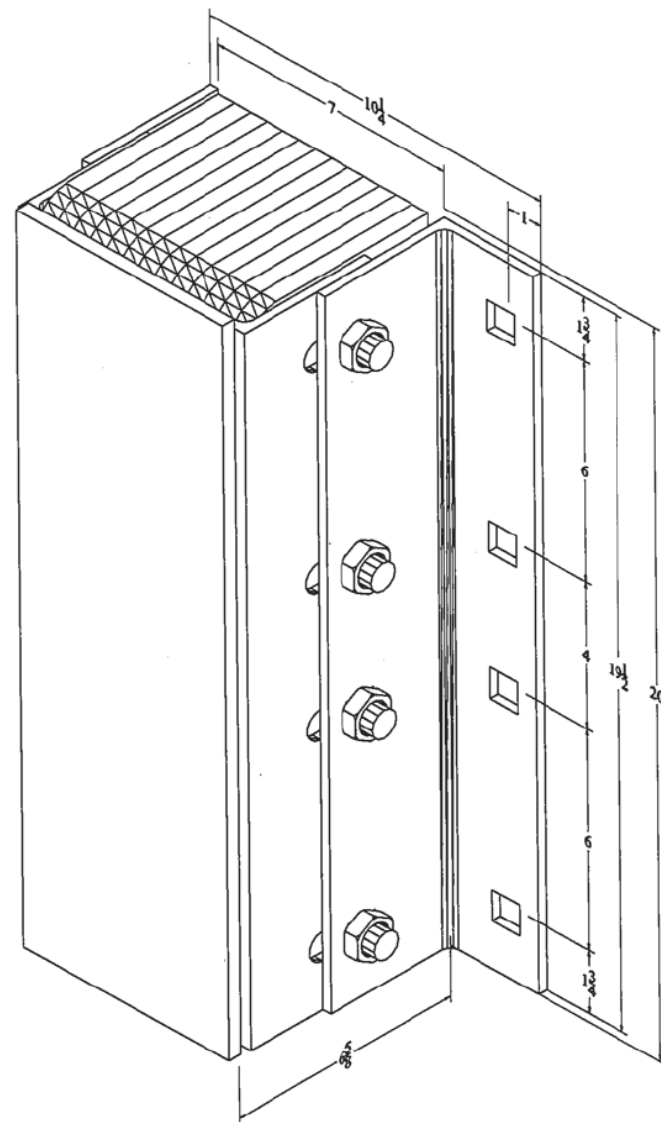
Face Plate Size (1) 3/8"x6-3/8"x20"

Bolt Heads Are Inscribed

"DURABLE CORP"

Date: 02/14/13

All measurements are +/- 1/8"





Koffler Sales Company

Specialists in Floor and Wall Protection
For Over 50 Years!

Steel-Face Dock Bumpers

Model: B624-11-SF

MODEL: *B624-11-SF*

Size

Projection 6-5/8"
Height 24"

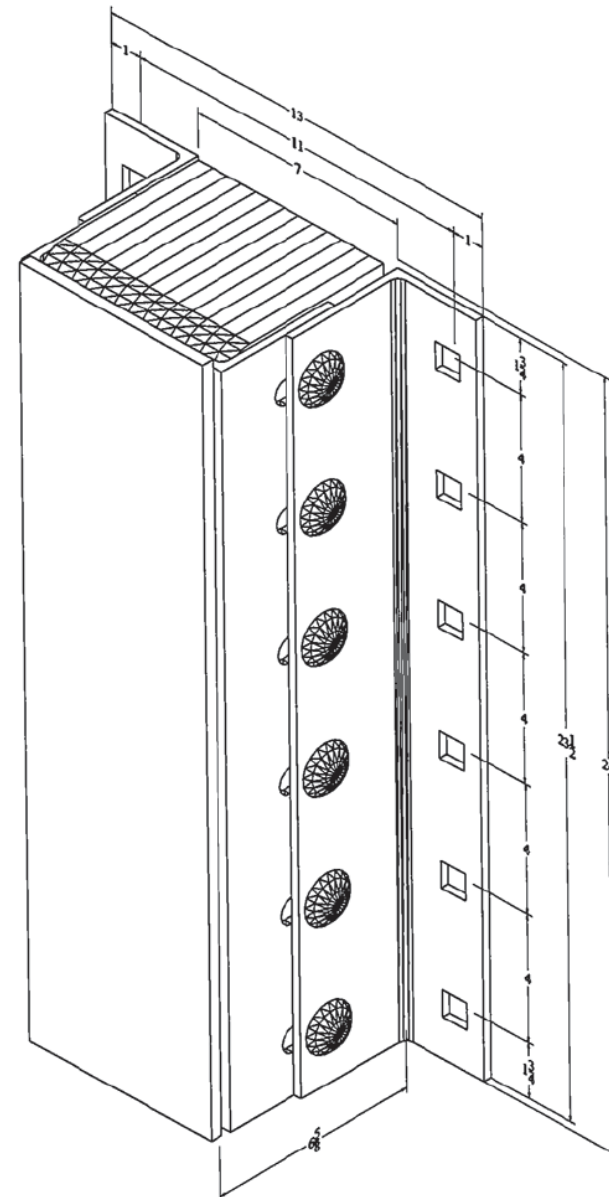
Length:

-Overall 13"
-Anchor Holes 11"
-Rubber 7"
Angle Size (2) 1/4"x3"x4"x23-1/2"
Slot Angle Size (2) 1/4"x3"x4"x23-1/2"
Face Plate Size (1) 3/8"x6-3/8"x24"

Bolt Heads Are Inscribed
"DURABLE CORP"

Date: 02/06/13

All measurements are +/- 1/8"





Koffler Sales Company

Specialists in Floor and Wall Protection
For Over 50 Years!

Steel-Face Dock Bumpers

Model: B624-11-SFP1

MODEL: *B624-11-SFP1*

Size

Projection 6-5/8"

Height 24"

Length:

-Overall 10-1/4"

-Rubber 7"

Angle Size (1) 1/4"x3"x4"x23-1/2"

Plate Size (1) 1/4"x4"x23-1/2"

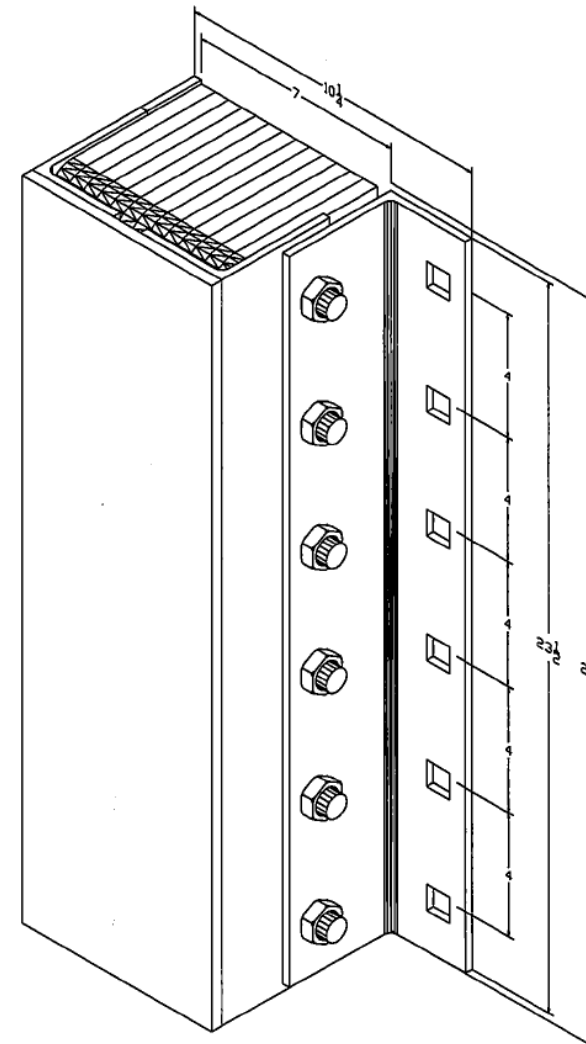
Slot Angle Size 1/4"x3"x4"x23-1/2"

Face Plate Size (1) 3/8"x24"x7"

Bolt Heads Are Inscribed
"DURABLE CORP"

Date: 04/07/09

All measurements are +/- 1/8"





Koffler Sales Company

Specialists in Floor and Wall Protection
For Over 50 Years!

Steel-Face Dock Bumpers

Model: B636-11-SF

MODEL: B636-11-SF

Size

Projection 6-5/8"

Height 36"

Length:

-Overall 13"

-Anchor Holes 11"

-Rubber 7"

Angle Size (2) 1/4"x3"x4"x35-1/2"

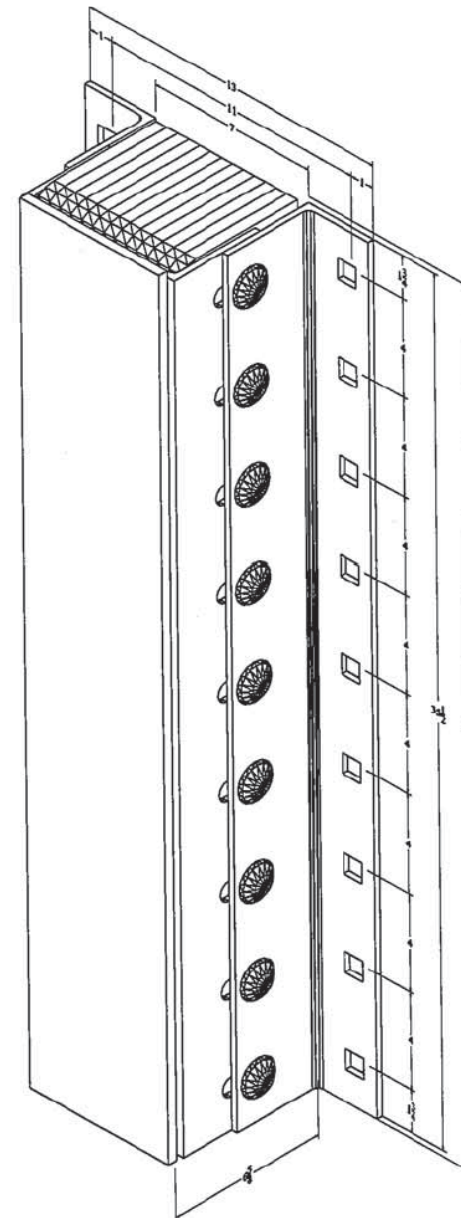
Slot Angle Size (2) 1/4"x3"x4"x35-1/2"

Face Plate Size (1) 3/8"x6-3/8"x36"

Bolt Heads Are Inscribed
"DURABLE CORP"

Date: 02/06/13

All measurements are +/- 1/8"





Koffler Sales Company

Specialists in Floor and Wall Protection
For Over 50 Years!

Steel-Face Dock Bumpers

Model: B636-11-SFP1

MODEL: *B636-11-SFP1*

Size

Projection 6-5/8"

Height 36"

Length:

-Overall 10-1/4"

-Rubber 7"

Angle Size (1) 1/4"x3"x4"x35-1/2"

Plate Size (1) 1/4"x4"x35-1/2"

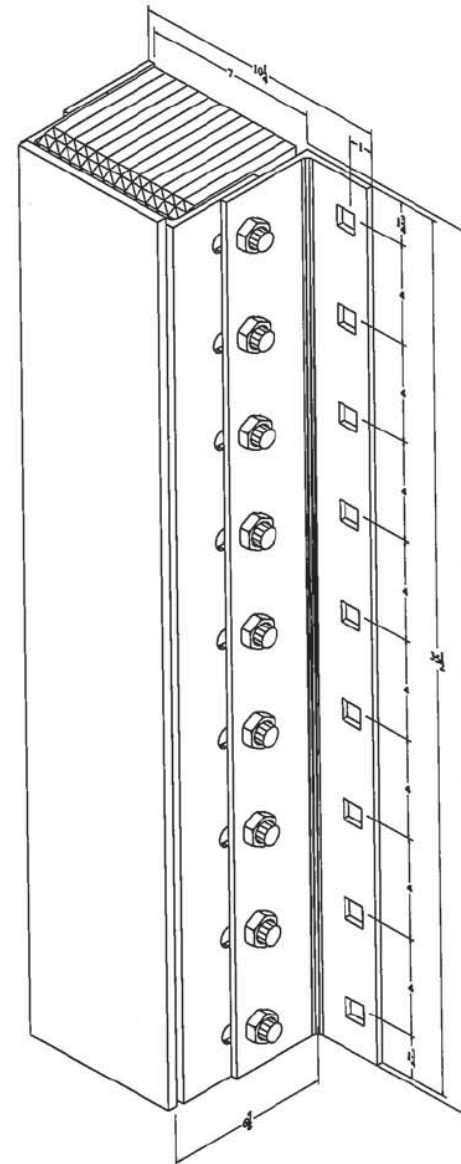
Slot Angle Size (2) 1/4"x3"x4"x35-1/2"

Face Plate Size (1) 3/8"x6-3/8"x36"

Bolt Heads Are Inscribed
"DURABLE CORP"

Date: 02/14/13

All measurements are +/- 1/8"





Koffler Sales Company

Specialists in Floor and Wall Protection
For Over 50 Years!

Steel-Face Dock Bumpers

Model: B4506-24-SF

MODEL: *B4506-24-SF*

Size

Projection 5-1/8"

Height 6"

Length:

-Overall 26"

-Anchor Holes 24"

-Rubber 20"

Angle Size (2) 1/4"x3"x3"x5-1/2"

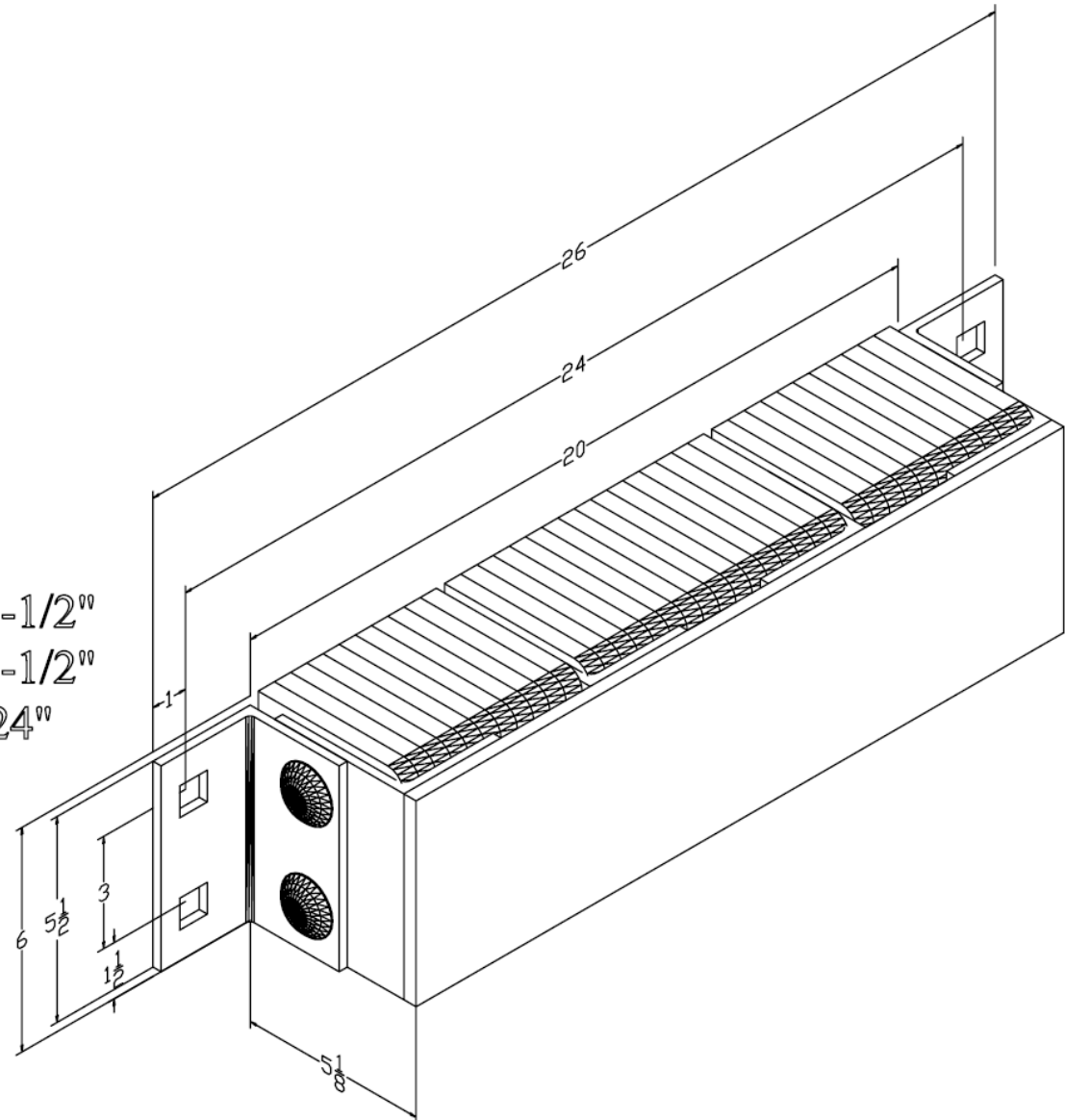
Slot Angle Size (2) 1/4"x3"x4"x5-1/2"

Face Plate Size (1) 3/8"x5-1/2"x24"

Bolt Heads Are Inscribed
"DURABLE CORP"

Date: 05/10/07

All measurements are +/- 1/8"





Koffler Sales Company

Specialists in Floor and Wall Protection
For Over 50 Years!

Steel-Face Dock Bumpers
Model: B4510-14SF

MODEL: *B4510-14SF*

Size

Projection 5-1/8"

Height 10"

Length:

-Overall 16"

-Anchor Holes 14"

-Rubber 10"

Angle Size (2) 1/4"x3"x3"x9-1/2"

Slot Angle Size (2) 1/4"x3"x4"x10"

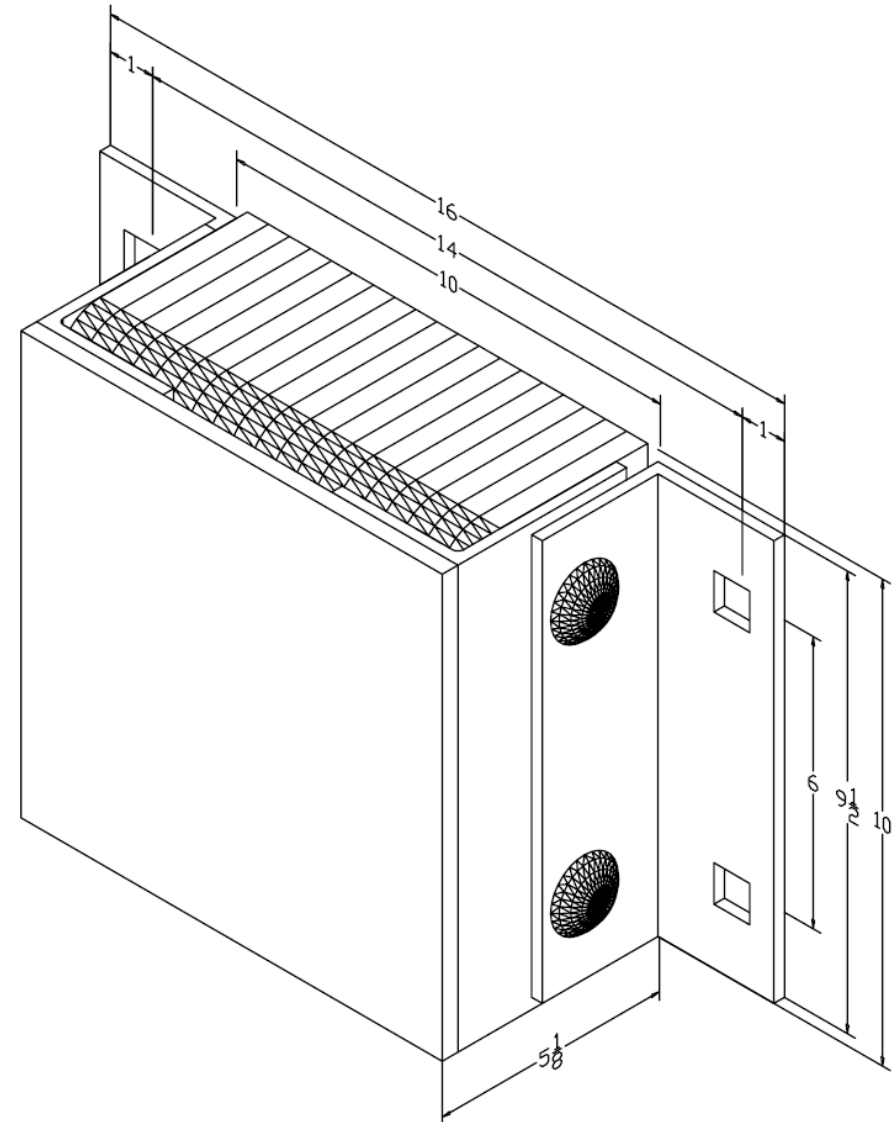
Face Plate Size (1) 3/8"x10"x10"

Bolt Heads Are Inscribed

"DURABLE CORP"

Date: 03/01/07

All measurements are +/- 1/8"





Koffler Sales Company

Specialists in Floor and Wall Protection
For Over 50 Years!

Steel-Face Dock Bumpers

Model: B4510-14SFP1

MODEL: *B4510-14SFP1*

Size

Projection 5-1/8"

Height 10"

Length:

-Overall 13-1/4"

-Rubber 10"

Angle Size 1/4"x3"x3"x9-1/2"

Plate Size 1/4"x3"x9-1/2"

Slot Angle Size (2) 1/4"x3"x4"x10"

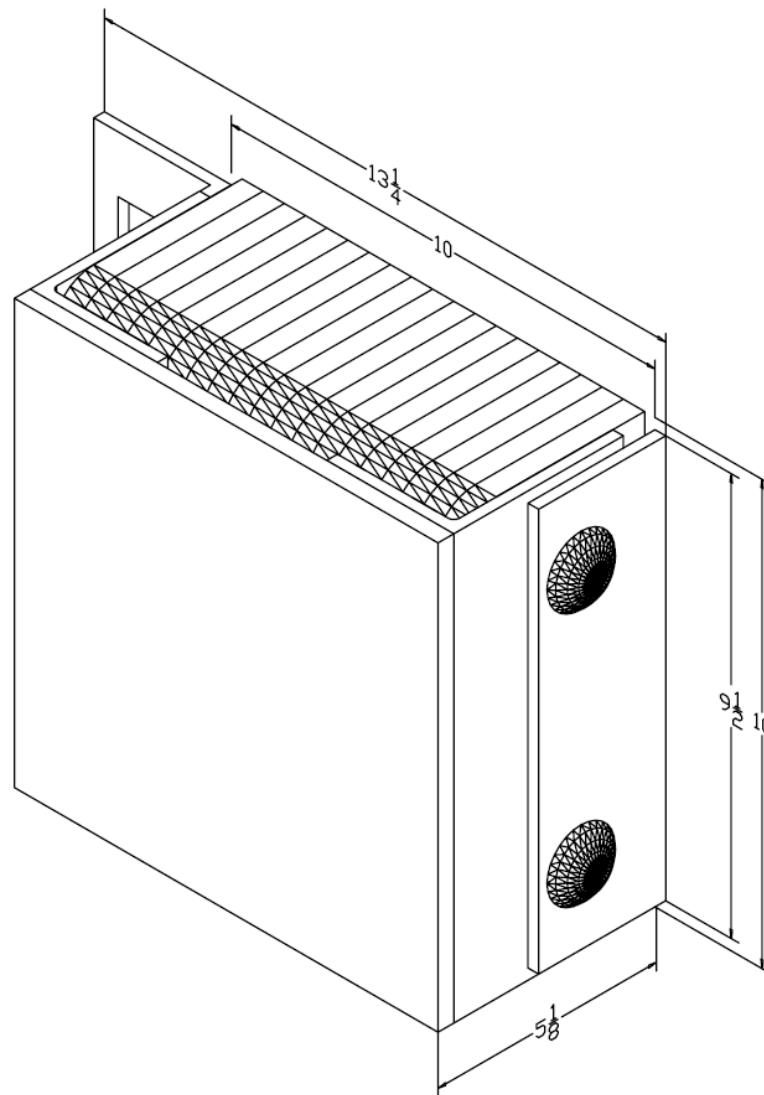
Face Plate Size (1) 3/8"x10"x10"

Bolt Heads Are Inscribed

"DURABLE CORP"

Date: 11/05/07

All measurements are +/- 1/8"





Koffler Sales Company

Specialists in Floor and Wall Protection
For Over 50 Years!

Steel-Face Dock Bumpers

Model: B4510-14-ST

MODEL: *B4510-14-ST*

Size

Projection 3-7/8"

Height 10"

Length:

-Overall 16"

-Anchor Holes 14"

-Rubber 10"

Angle Size 1/4"x3"x3"x9-1/2"

Slot Angle Size 1/4"x3"x3"x9-1/2"

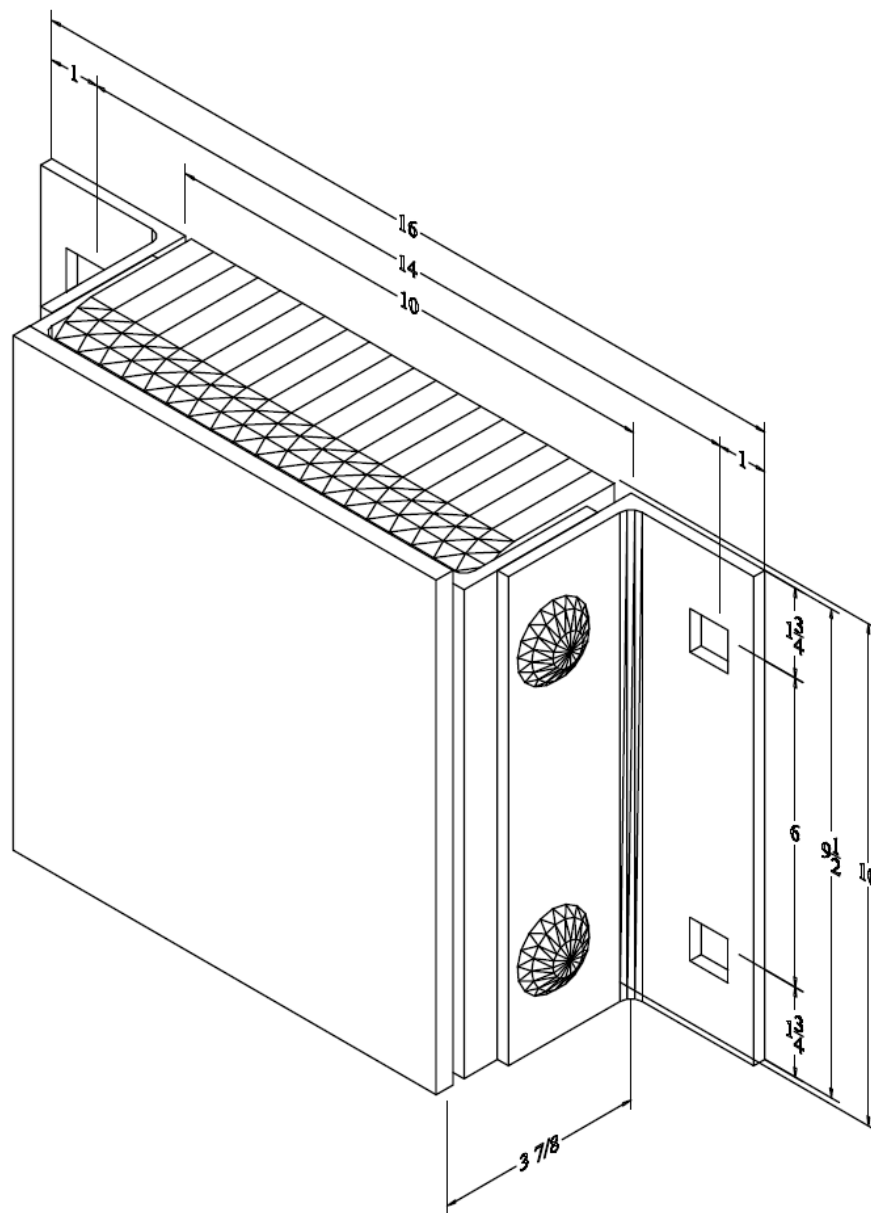
Face Plate Size 3/8"x10"x9-1/2"

Bolt Heads Are Inscribed

"DURABLE CORP"

Date: 11/02/15

All measurements are +/- 1/8"





Koffler Sales Company

Specialists in Floor and Wall Protection
For Over 50 Years!

Steel-Face Dock Bumpers

Model: B4510-14-STP1

MODEL: *B4510-14-STP1*

Size

Projection 3-7/8"

Height 10"

Length:

-Overall 13-1/4"

-Rubber 10"

Angle Size 1/4"x3"x3"x9-1/2"

Plate Size 1/4"x3"x9-1/2"

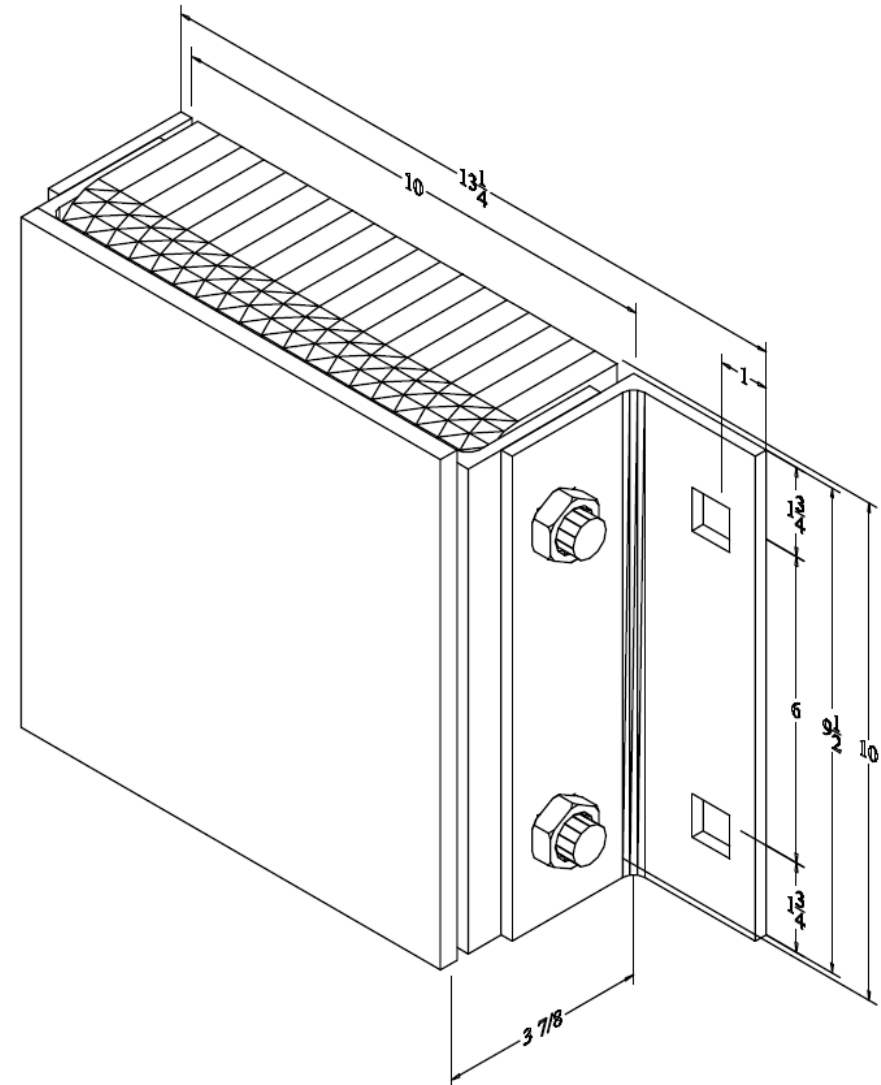
Slot Angle Size 1/4"x3"x3"x9-1/2"

Face Plate Size 3/8"x10"x9-1/2"

Bolt Heads Are Inscribed
"DURABLE CORP"

Date: 11/02/15

All measurements are +/- 1/8"





Koffler Sales Company

Specialists in Floor and Wall Protection
For Over 50 Years!

Steel-Face Dock Bumpers
Model: B4510-18SF

MODEL: *B4510-18SF*

Size

Projection 5-1/8"

Height 10"

Length:

-Overall 20"

-Anchor Holes 18"

-Rubber 14"

Angle Size (2) 1/4"x3"x3"x9-1/2"

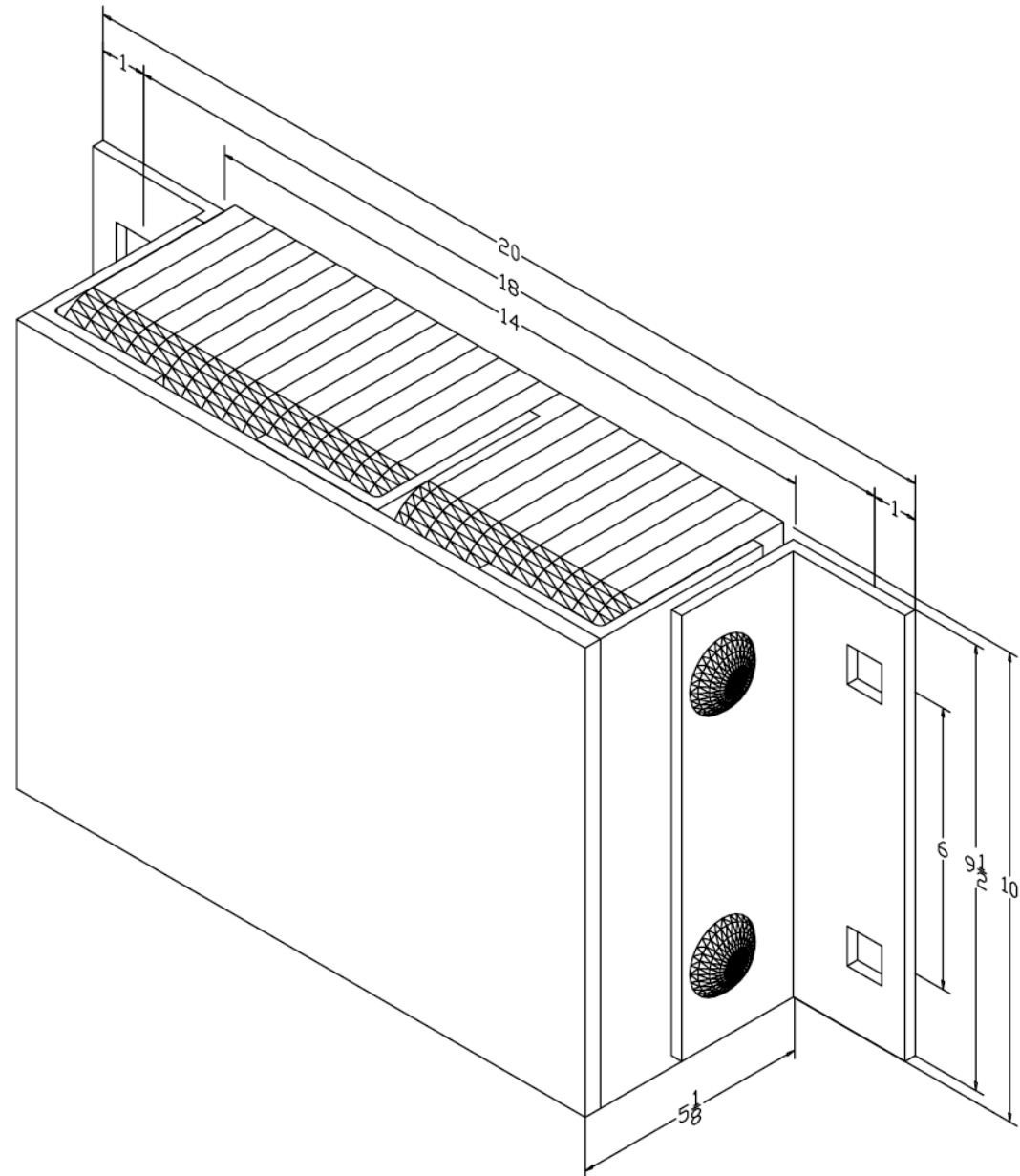
Slot Angle Size (3) 1/4"x3"x4"x10"

Face Plate Size (1) 3/8"x10"x14"

Bolt Heads Are Inscribed
"DURABLE CORP"

Date: 03/01/07

All measurements are +/- 1/8"





Koffler Sales Company

Specialists in Floor and Wall Protection
For Over 50 Years!

Steel-Face Dock Bumpers

Model: B4510-18-SFP1

MODEL: *B4510-18-SFP1*

Size

Projection 5-1/8"

Height 10"

Length:

-Overall 17-1/4"

-Rubber 14"

Angle Size (1) 1/4"x3"x3"x9-1/2"

Plate Size (1) 1/4"x3"x9-1/2"

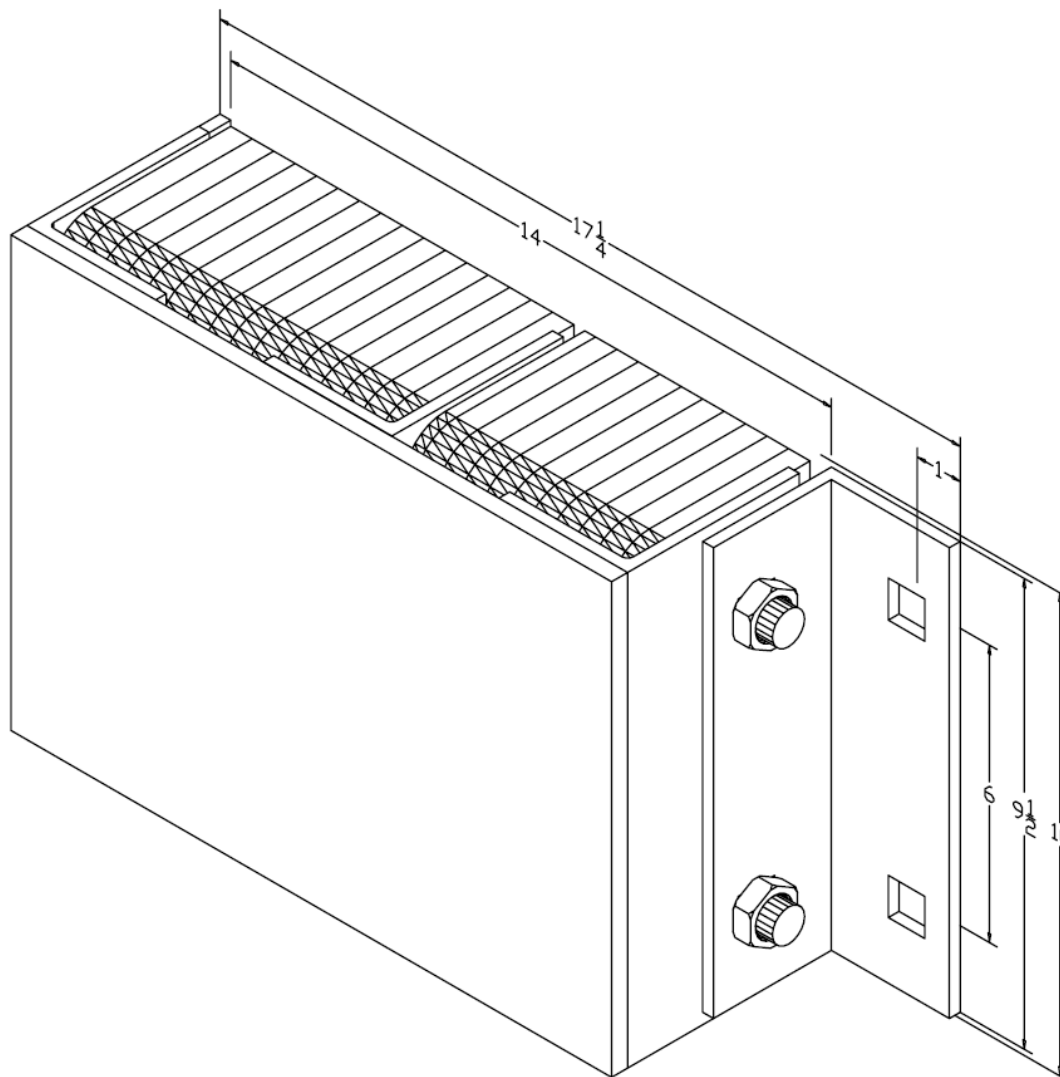
Slot Angle Size 1/4"x3"x4"x9-1/2"

Face Plate Size (1) 3/8"x10"x14"

Bolt Heads Are Inscribed
"DURABLE CORP"

Date: 04/07/09

All measurements are +/- 1/8"





Specialists in Floor and Wall Protection For Over 50 Years!

Steel-Face Dock Bumpers

Model: B4510-24SF

Size

Projection 5-1/8"

Height $10''$

Length:

-Overall 26"

-Anchor Holes 24"

- Rubber 20"

Angle Size (2) 1/4"x3"x3"x9-1/2"

Slot Angle Size (4) 1/4"x3"x4"x10"

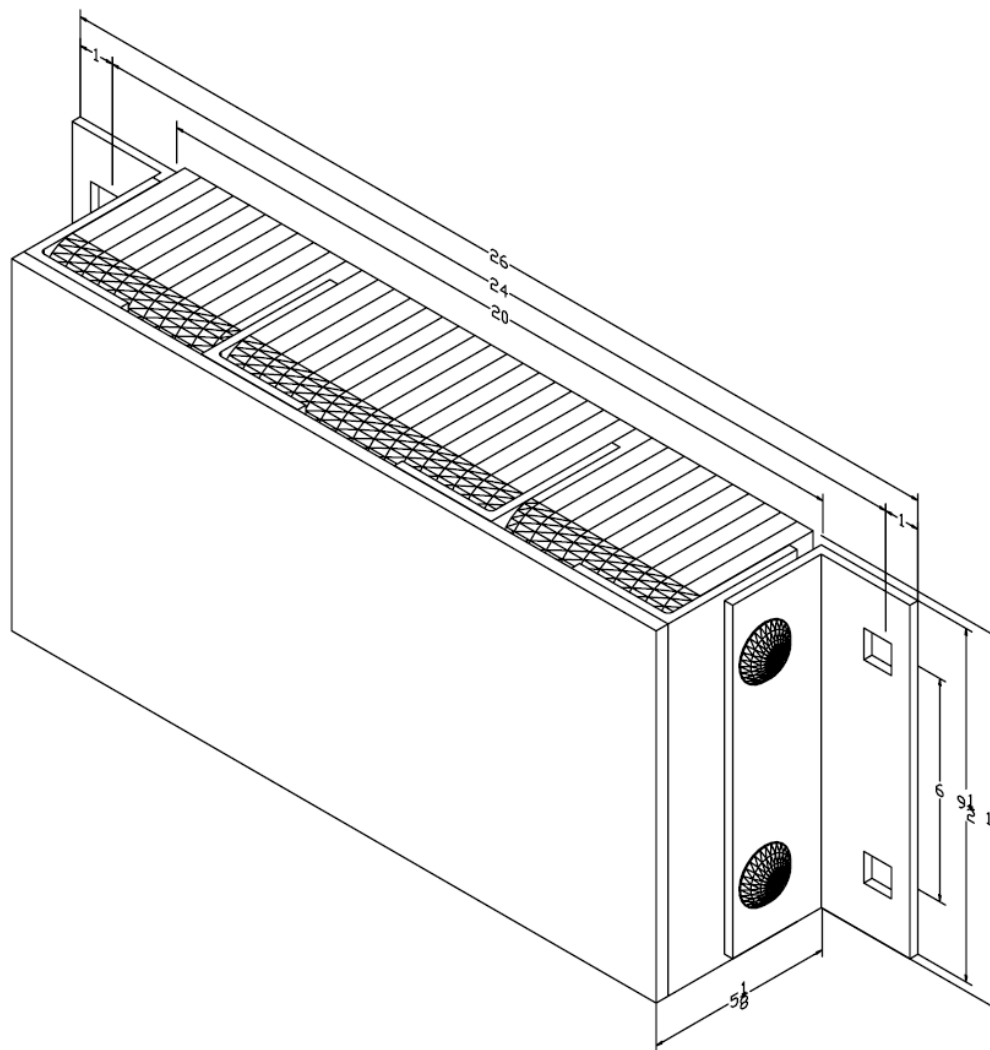
Face Plate Size (1) 3/8"x10"x20"

Bolt Heads Are Inscribed

"DURABLE CORP"

Date: 03/01/07

All measurements are +/- 1/8"





Koffler Sales Company

Specialists in Floor and Wall Protection
For Over 50 Years!

Steel-Face Dock Bumpers

Model: B4510-24-SFP1

MODEL: *B4510-24-SFP1*

Size

Projection 5-1/8"

Height 10"

Length:

-Overall 23-1/4"

-Rubber 20"

Angle Size (1) 1/4"x3"x3"x9-1/2"

Plate Size (1) 1/4"x3"x9-1/2"

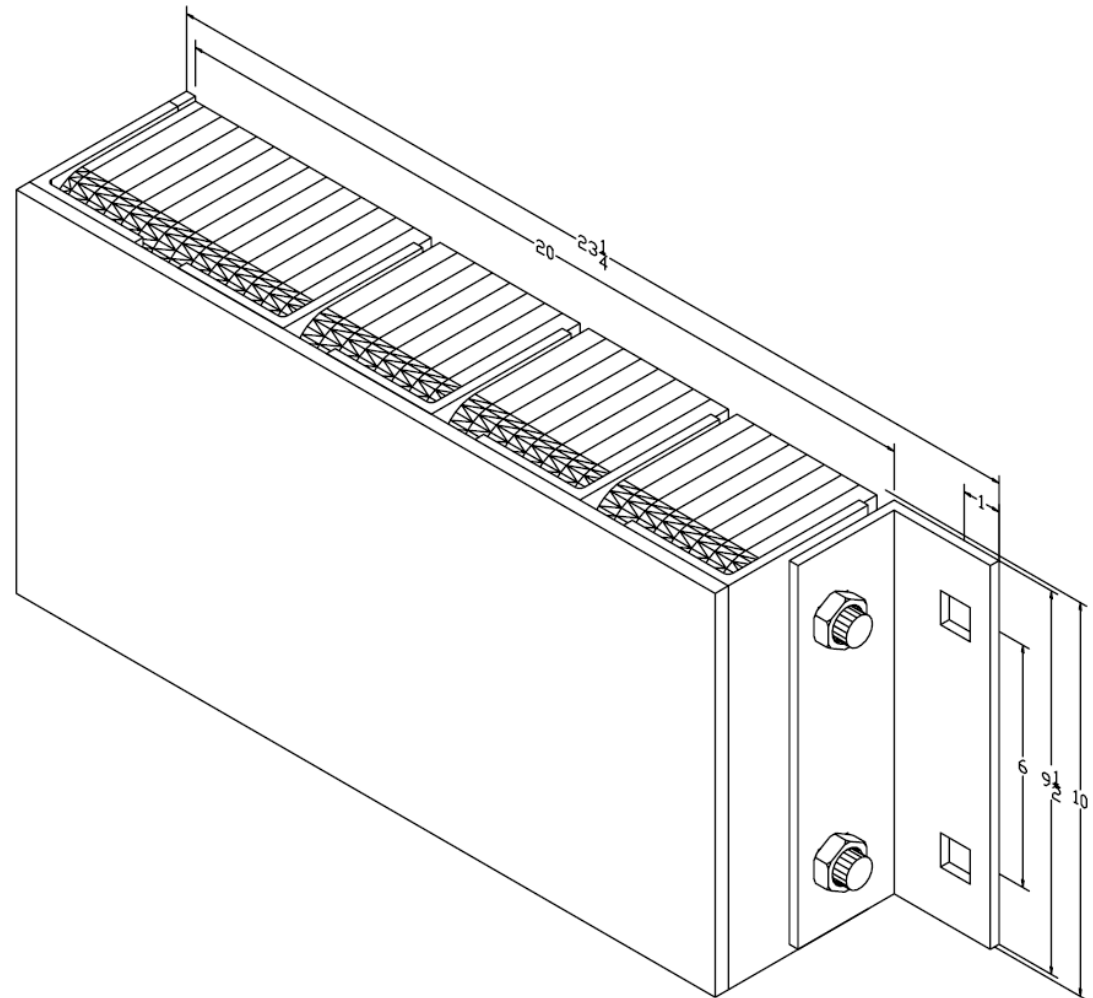
Slot Angle Size 1/4"x3"x4"x9-1/2"

Face Plate Size (1) 3/8"x10"x20"

Bolt Heads Are Inscribed
"DURABLE CORP"

Date: 04/07/09

All measurements are +/- 1/8"





Koffler Sales Company

Specialists in Floor and Wall Protection
For Over 50 Years!

Steel-Face Dock Bumpers

Model: B4510-36-SF

MODEL: *B4510-36-SF*

Size

Projection 5-1/8"

Height 10"

Length:

-Overall 38"

-Anchor Holes 36"

-Rubber 32"

Angle Size (2) 1/4"x3"x3"x9-1/2"

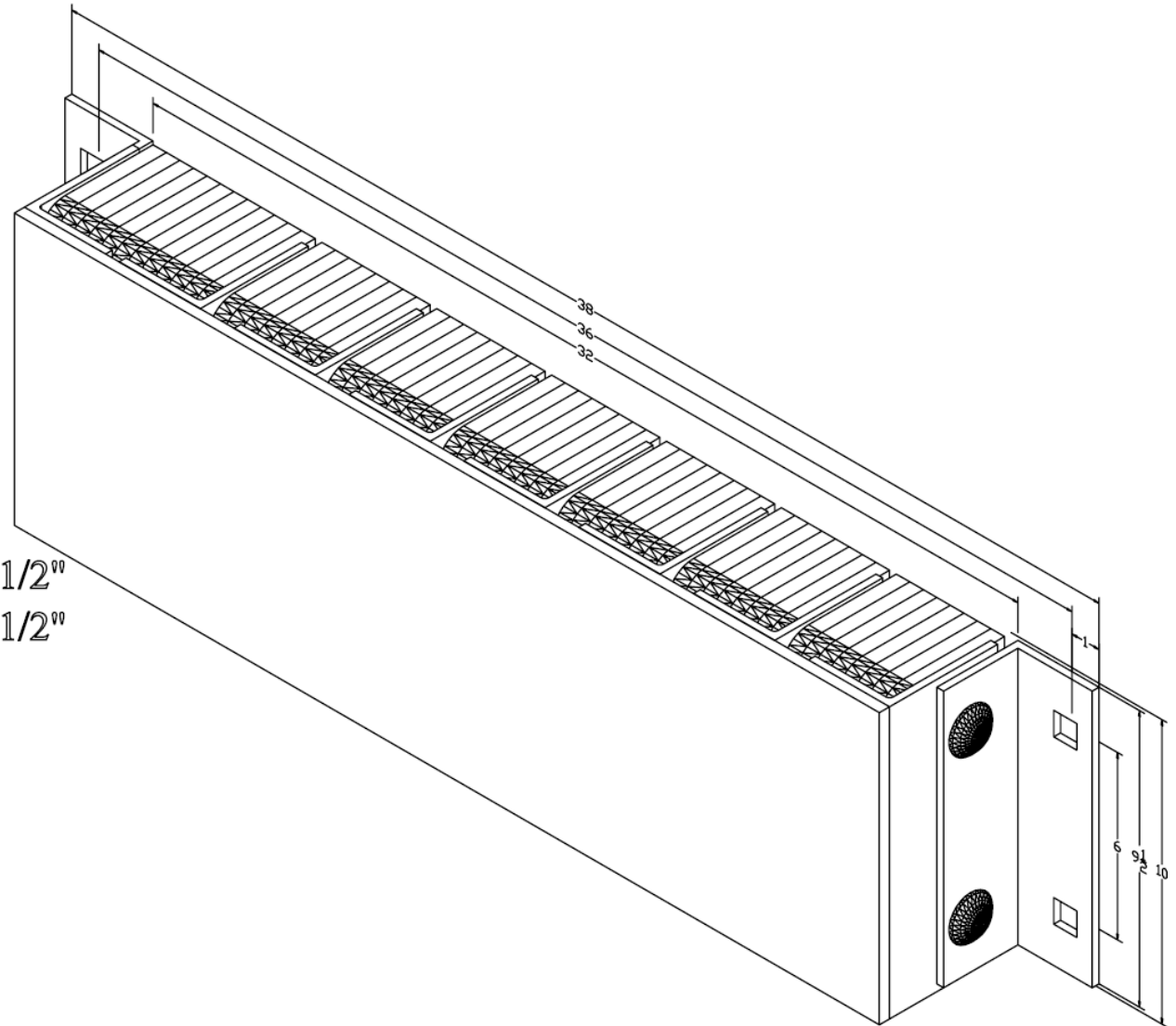
Slot Angle Size 1/4"x3"x4"x9-1/2"

Face Plate Size (1) 3/8"x10"x32"

Bolt Heads Are Inscribed
"DURABLE CORP"

Date: 04/07/09

All measurements are +/- 1/8"





Koffler Sales Company

Specialists in Floor and Wall Protection
For Over 50 Years!

Steel-Face Dock Bumpers

Model: B4510-36-SFP1

MODEL: B4510-36-SFP1

Size

Projection 5-1/8"

Height 10"

Length:

-Overall 35-1/4"

-Rubber 32"

Angle Size (1) 1/4"x3"x3"x9-1/2"

Plate Size (1) 1/4"x3"x9-1/2"

Slot Angle Size 1/4"x3"x4"x9-1/2"

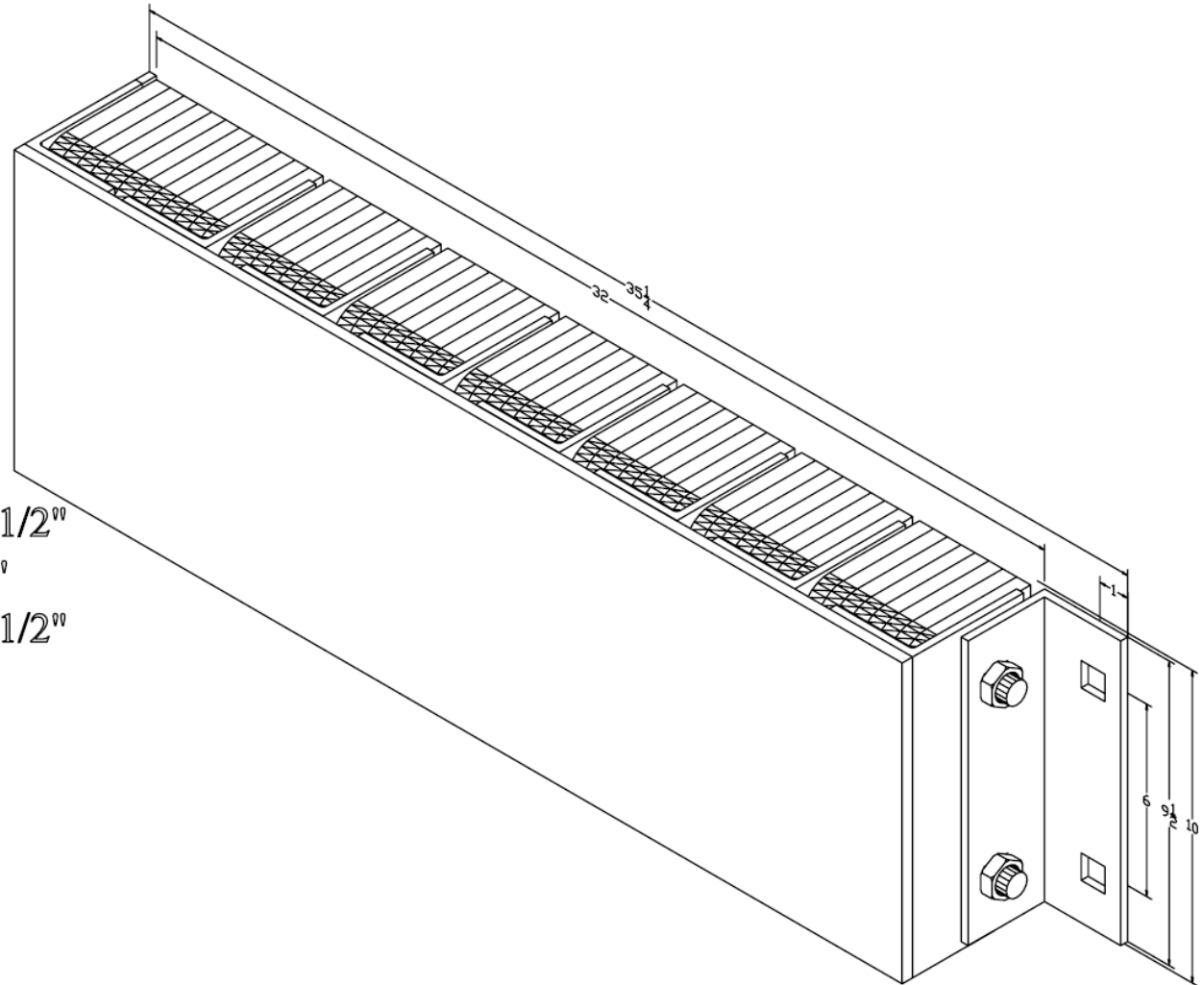
Face Plate Size (1) 3/8"x10"x32"

Bolt Heads Are Inscribed

"DURABLE CORP"

Date: 04/07/09

All measurements are +/- 1/8"





Koffler Sales Company

Specialists in Floor and Wall Protection
For Over 50 Years!

Steel-Face Dock Bumpers

Model: B4512-12-SF

MODEL: *B4512-12-SF*

Size

Projection 5-1/8"

Height 12"

Length:

-Overall 14"

-Anchor Holes 12"

-Rubber 8"

Angle Size 1/4"x3"x3"x11-1/2"

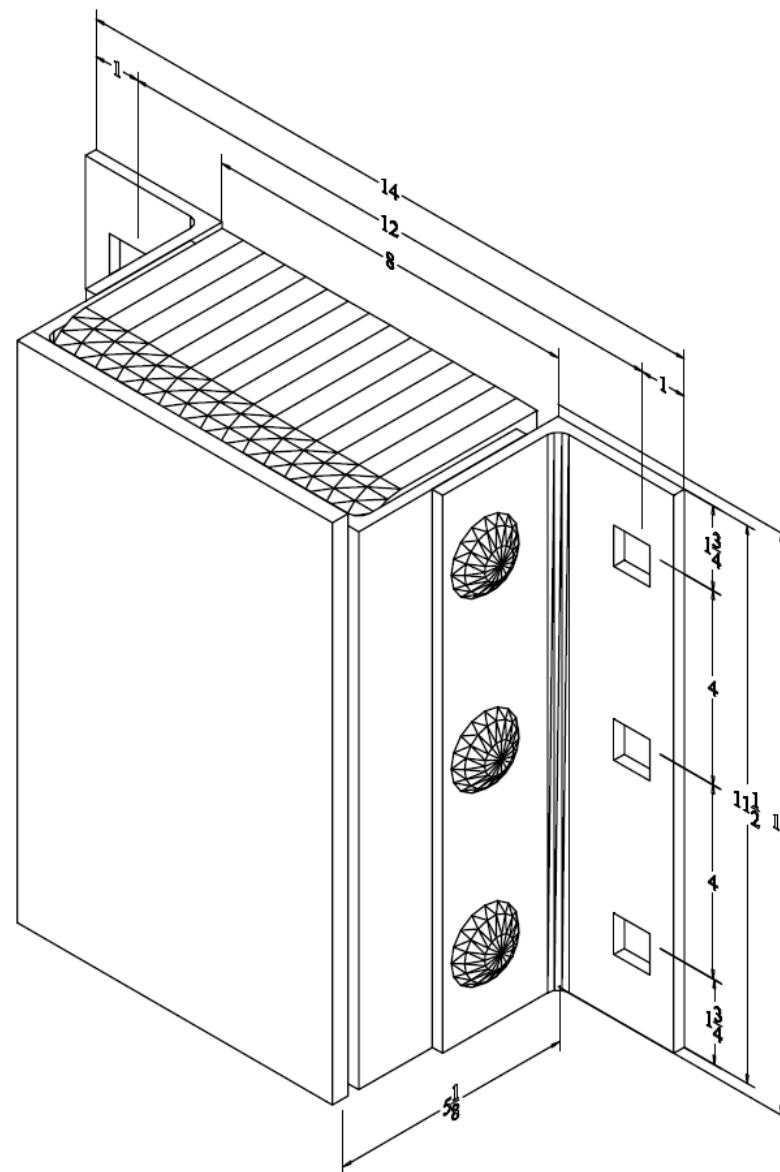
Slot Angle Size 1/4"x3"x4"x11-1/2"

Face Plate Size 3/8"x12"x9-1/2"

Bolt Heads Are Inscribed
"DURABLE CORP"

Date: 11/02/15

All measurements are +/- 1/8"





Koffler Sales Company

Specialists in Floor and Wall Protection
For Over 50 Years!

Steel-Face Dock Bumpers

Model: B4512-12-SF

MODEL: *B4512-12-SF*

Size

Projection 5-1/8"

Height 12"

Length:

-Overall 14"

-Anchor Holes 12"

-Rubber 8"

Angle Size 1/4"x3"x3"x11-1/2"

Slot Angle Size 1/4"x3"x4"x11-1/2"

Face Plate Size 3/8"x12"x9-1/2"

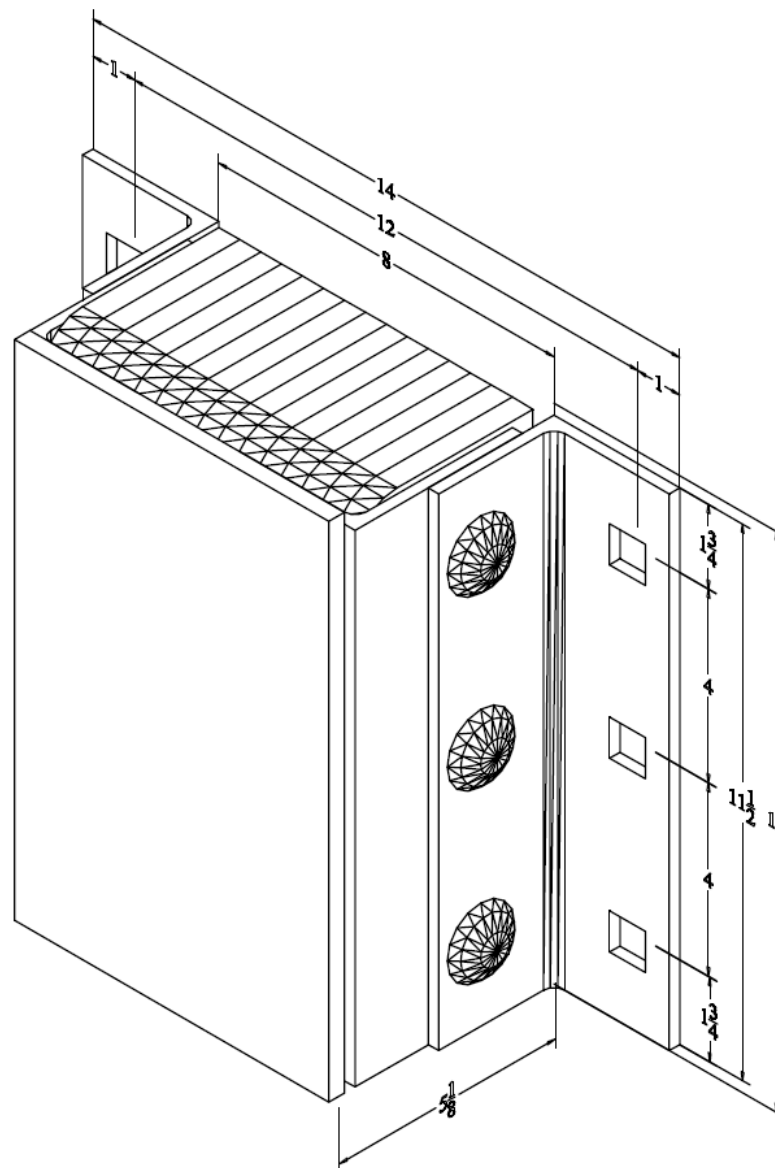
Bolt Heads Are Inscribed

"DURABLE CORP"

Date: 11/02/15

All measurements are +/- 1/8"

Confidential -- Property of Durable Corporation





Koffler Sales Company

Specialists in Floor and Wall Protection
For Over 50 Years!

Steel-Face Dock Bumpers

Model: B4512-14SF

MODEL: *B4512-14SF*

Size

Projection 5-1/8"

Height 12"

Length:

-Overall 16"

-Anchor Holes 14"

-Rubber 10"

Angle Size (2) 1/4"x3"x3"x11-1/2"

Slot Angle Size (2) 1/4"x3"x4"x12"

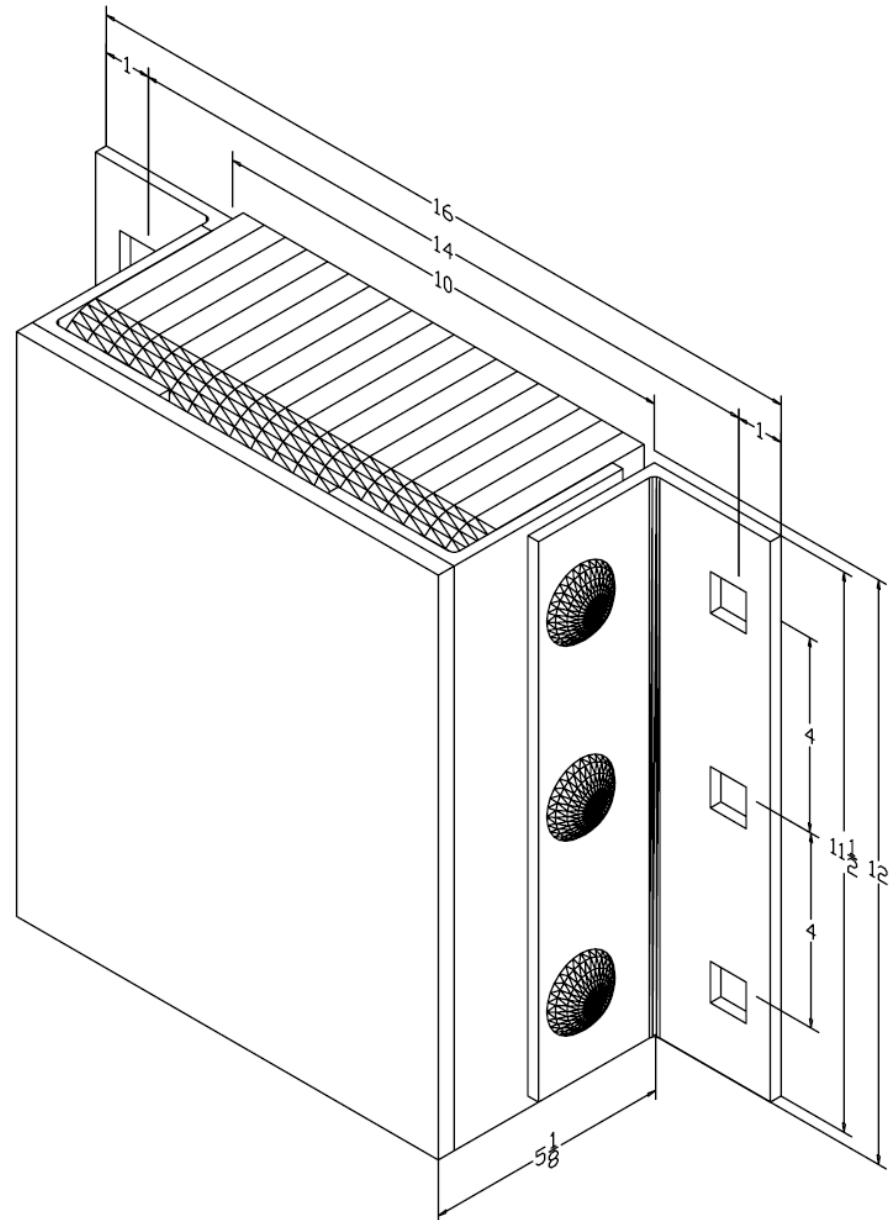
Face Plate Size (1) 3/8"x12"x10"

Bolt Heads Are Inscribed

"DURABLE CORP"

Date: 03/01/07

All measurements are +/- 1/8"





Koffler Sales Company

Specialists in Floor and Wall Protection
For Over 50 Years!

Steel-Face Dock Bumpers

Model: B4510-14-SFP1

MODEL: *B4510-14-SFP1*

Size

Projection 5-1/8"

Height 12"

Length:

-Overall 13-1/4"

-Rubber 10"

Angle Size (1) 1/4"x3"x3"x11-1/2"

Plate Size (1) 1/4"x3"x11-1/2"

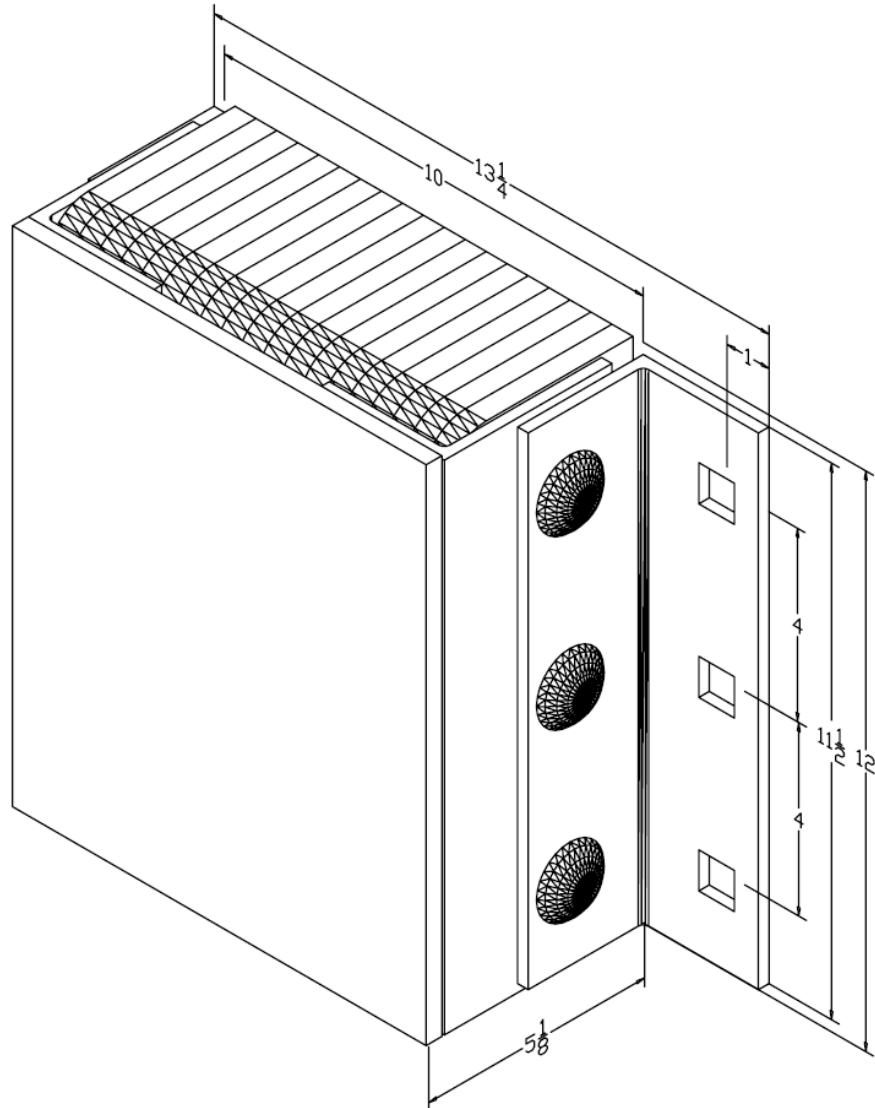
Slot Angle Size (2) 1/4"x3"x4"x11-7/8"

Face Plate Size (1) 3/8"x12"x9-7/8"

Bolt Heads Are Inscribed
"DURABLE CORP"

Date: 08/17/09

All measurements are +/- 1/8"





Koffler Sales Company

Specialists in Floor and Wall Protection
For Over 50 Years!

Steel-Face Dock Bumpers

Model: B4512-18-SF

MODEL: *B4512-18-SF*

Size

Projection

5-1/8"

Height

12"

Length:

-Overall

20"

-Anchor Holes

18"

-Rubber

14"

Angle Size (2)

1/4"x3"x3"x11-1/2"

Face Plate Size (1)

3/8"x12"x14"

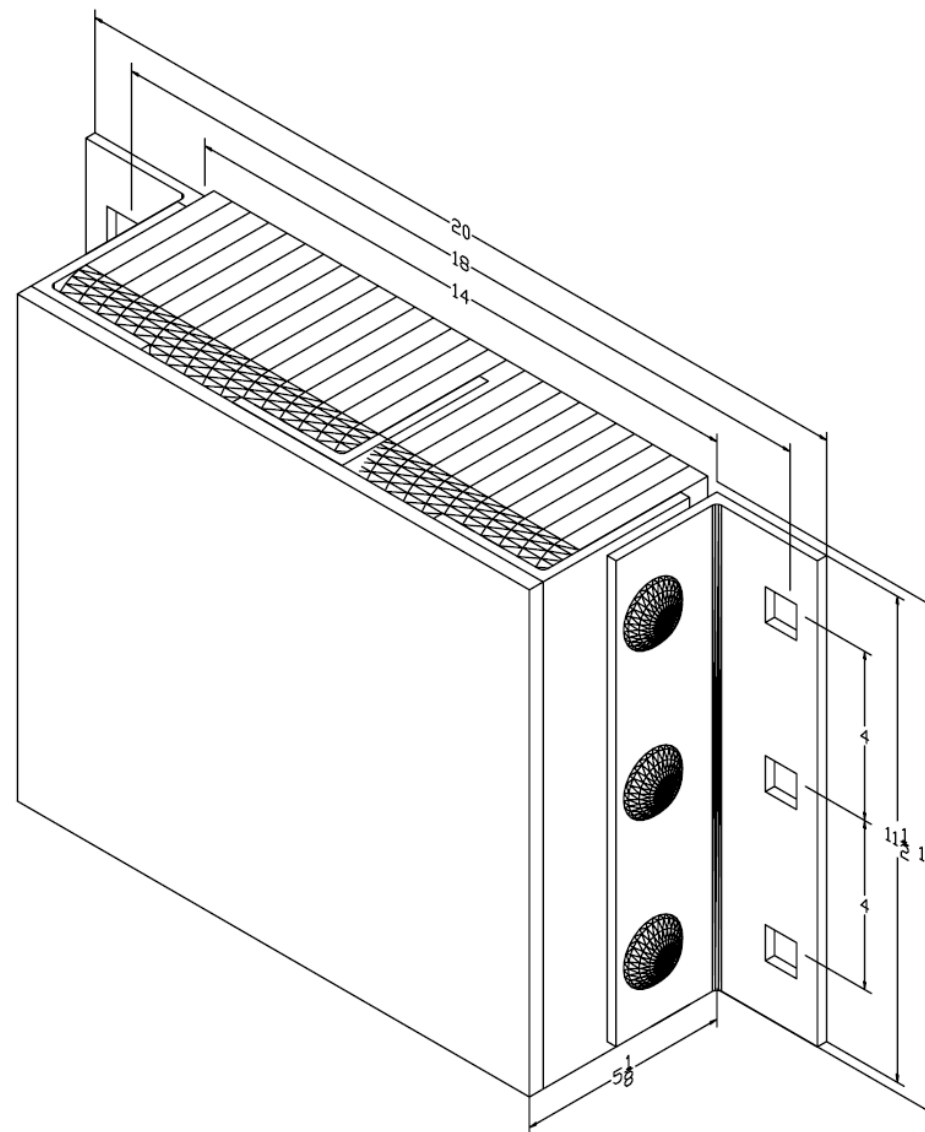
Slotted Angle Size (3)

1/4"x3"x4"x12"

Bolt Heads Are Inscribed
"DURABLE CORP"

Date: 02/28/07

All measurements are within +/-1/8"





Koffler Sales Company

Specialists in Floor and Wall Protection
For Over 50 Years!

Steel-Face Dock Bumpers

Model: B4512-18-SFP1

MODEL: *B4512-18-SFP1*

Size

Projection 5-1/8"

Height 12"

Length:

-Overall 17-1/4"

-Rubber 14"

Angle Size 1/4"x3"x3"x11-1/2"

Plate Size 1/4"x3"x11-1/2"

Slot Angle Size 1/4"x3"x4"x11-1/2"

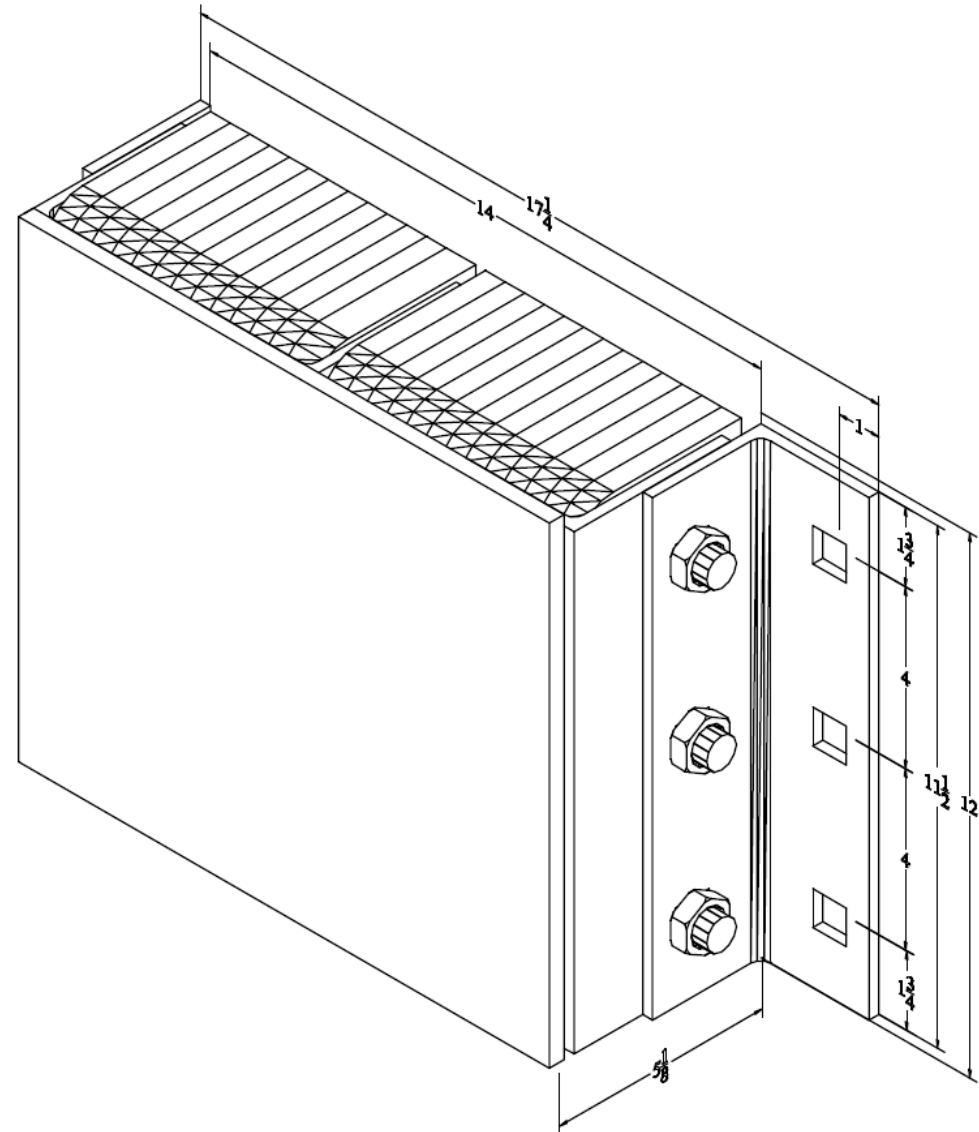
Face Plate Size 3/8"x12"x13-1/2"

Bolt Heads Are Inscribed

"DURABLE CORP"

Date: 11/02/15

All measurements are +/- 1/8"





Koffler Sales Company

Specialists in Floor and Wall Protection
For Over 50 Years!

Steel-Face Dock Bumpers

Model: B4510-24SF

MODEL: *B4510-24SF*

Size

Projection 5-1/8"

Height 12"

Length:

-Overall 26"

-Anchor Holes 24"

-Rubber 20"

Angle Size (2) 1/4"x3"x3"x11-1/2"

Slot Angle Size (4) 1/4"x3"x4"x12"

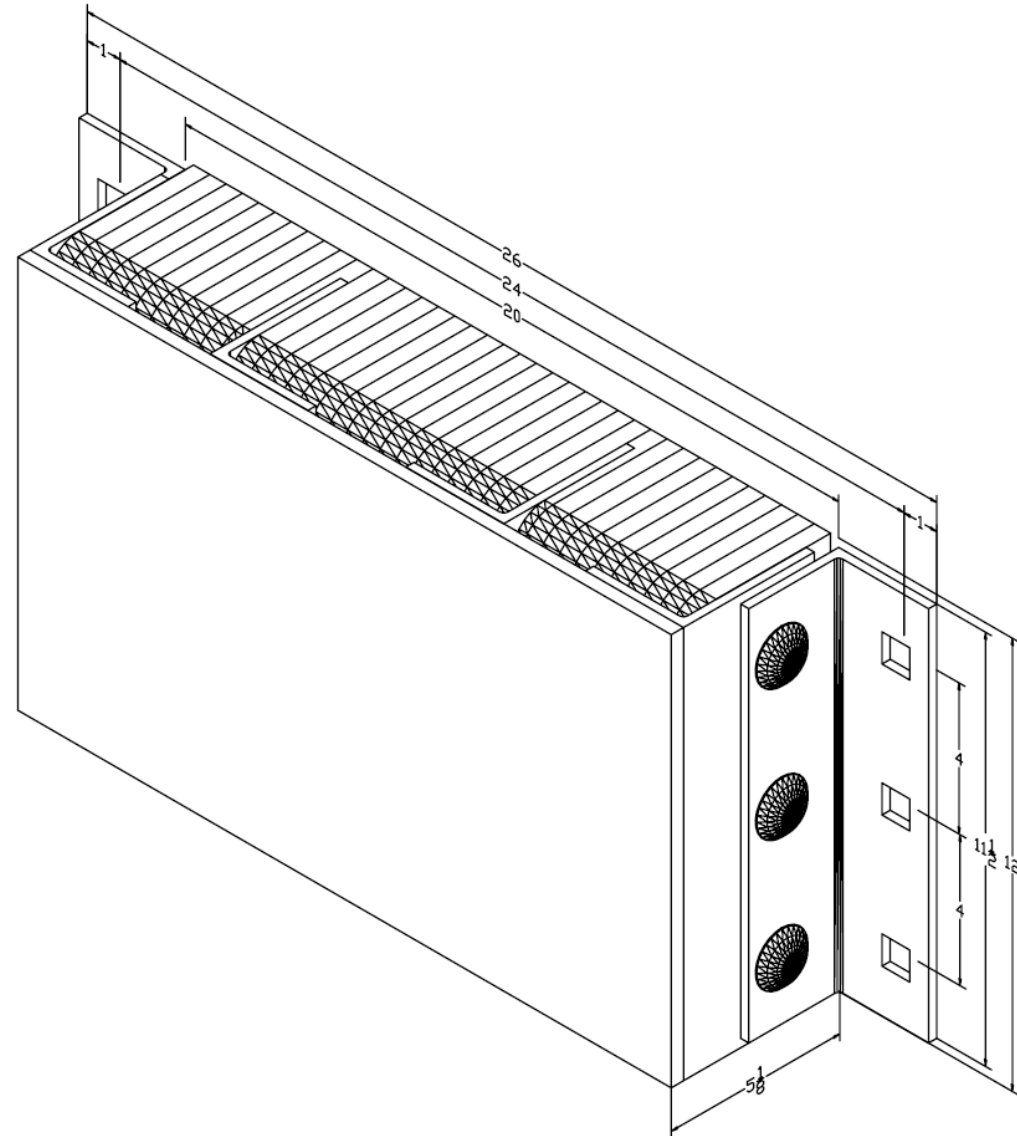
Face Plate Size (1) 3/8"x12"x20"

Bolt Heads Are Inscribed

"DURABLE CORP"

Date: 03/01/07

All measurements are +/- 1/8"





Koffler Sales Company

Specialists in Floor and Wall Protection
For Over 50 Years!

Steel-Face Dock Bumpers

Model: B4512-24-SFP1

MODEL: B4512-24-SFP1

Size

Projection 5-1/8"

Height 12"

Length:

-Overall 23-1/4"

-Rubber 20"

Angle Size 1/4"x3"x3"x11-1/2"

Plate Size 1/4"x3"x11-1/2"

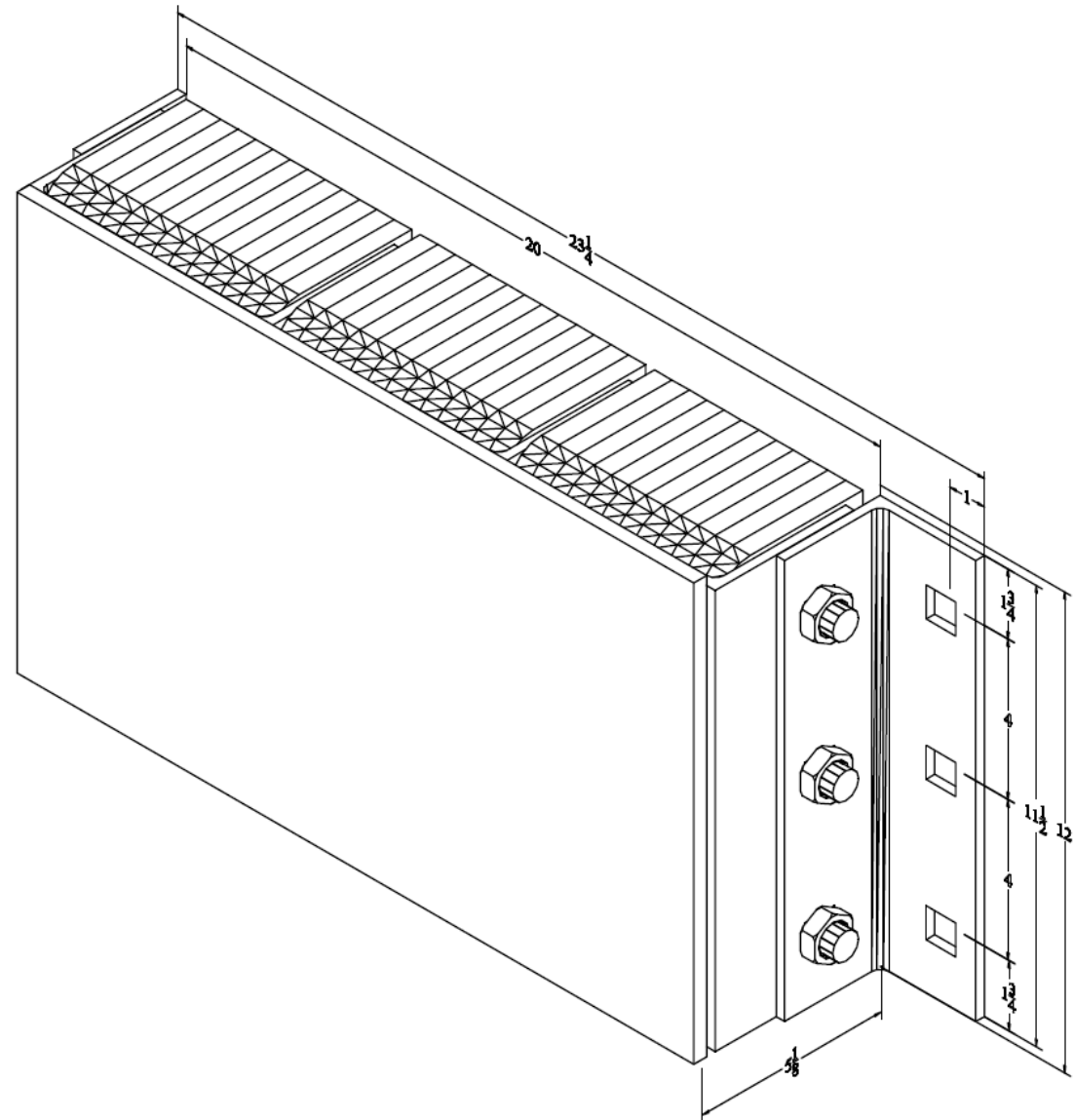
Slot Angle Size 1/4"x3"x4"x11-1/2"

Face Plate Size 3/8"x12"x19-1/2"

Bolt Heads Are Inscribed
"DURABLE CORP"

Date: 11/02/15

All measurements are +/- 1/8"





Koffler Sales Company

Specialists in Floor and Wall Protection
For Over 50 Years!

Steel-Face Dock Bumpers

Model: B4512-36-SF

MODEL: *B4512-36-SF*

Size

Projection 5-1/8"

Height 12"

Length:

-Overall 38"

-Anchor Holes 36"

-Rubber 32"

Angle Size (2) 1/4"x3"x3"x11-1/2"

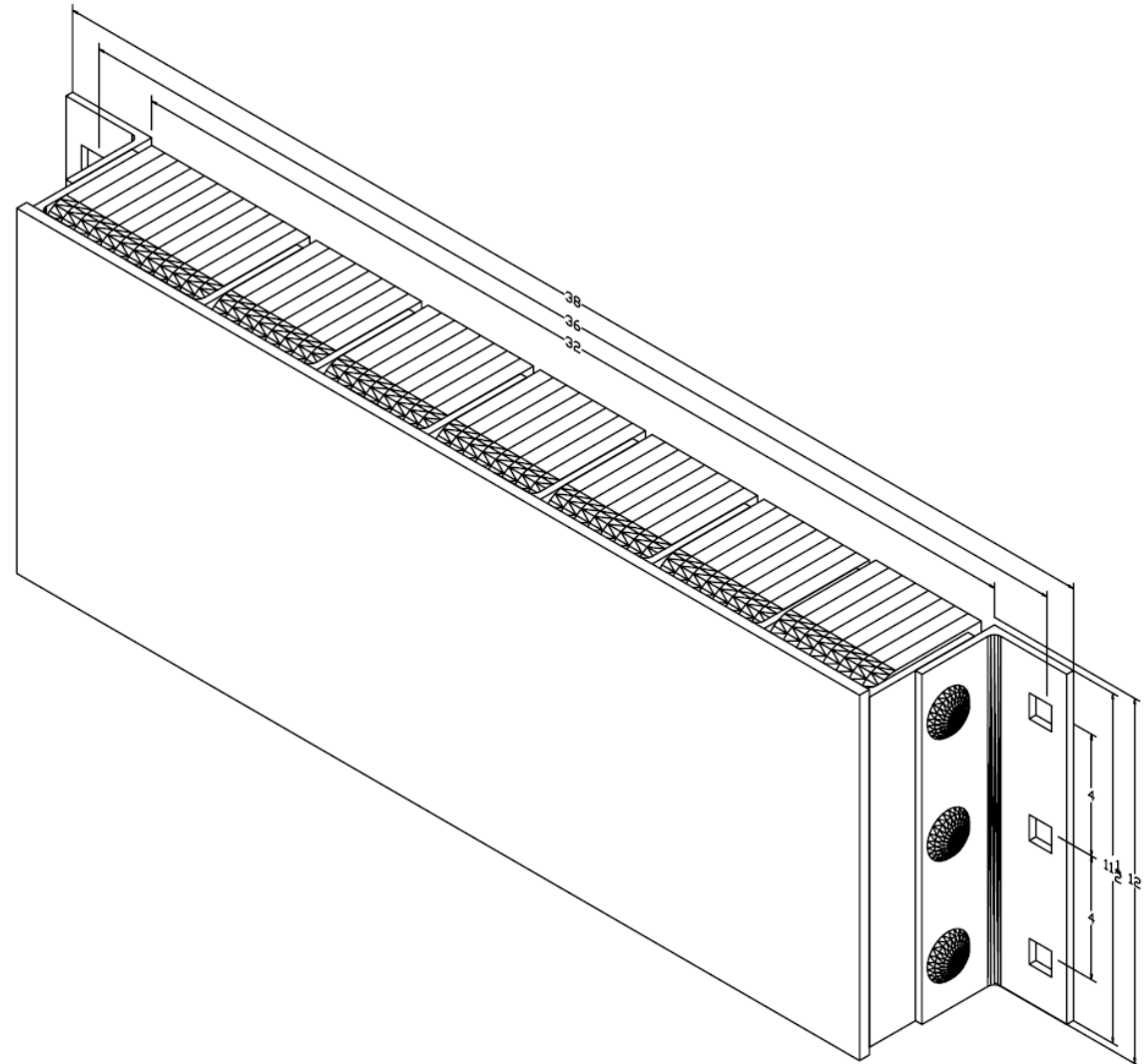
Slot Angle Size 1/4"x3"x4"x11-1/2"

Face Plate Size (1) 3/8"x12"x32"

Bolt Heads Are Inscribed
"DURABLE CORP"

Date: 04/08/09

All measurements are +/- 1/8"





Koffler Sales Company

Specialists in Floor and Wall Protection
For Over 50 Years!

Steel-Face Dock Bumpers
Model: B610-14SF

MODEL: *B4512-36-SFP1*

Size

Projection 5-1/8"

Height 12"

Length:

-Overall 35-1/4"

-Rubber 32"

Angle Size 1/4"x3"x3"x11-1/2"

Plate Size 1/4"x3"x11-1/2"

Slot Angle Size 1/4"x3"x4"x11-1/2"

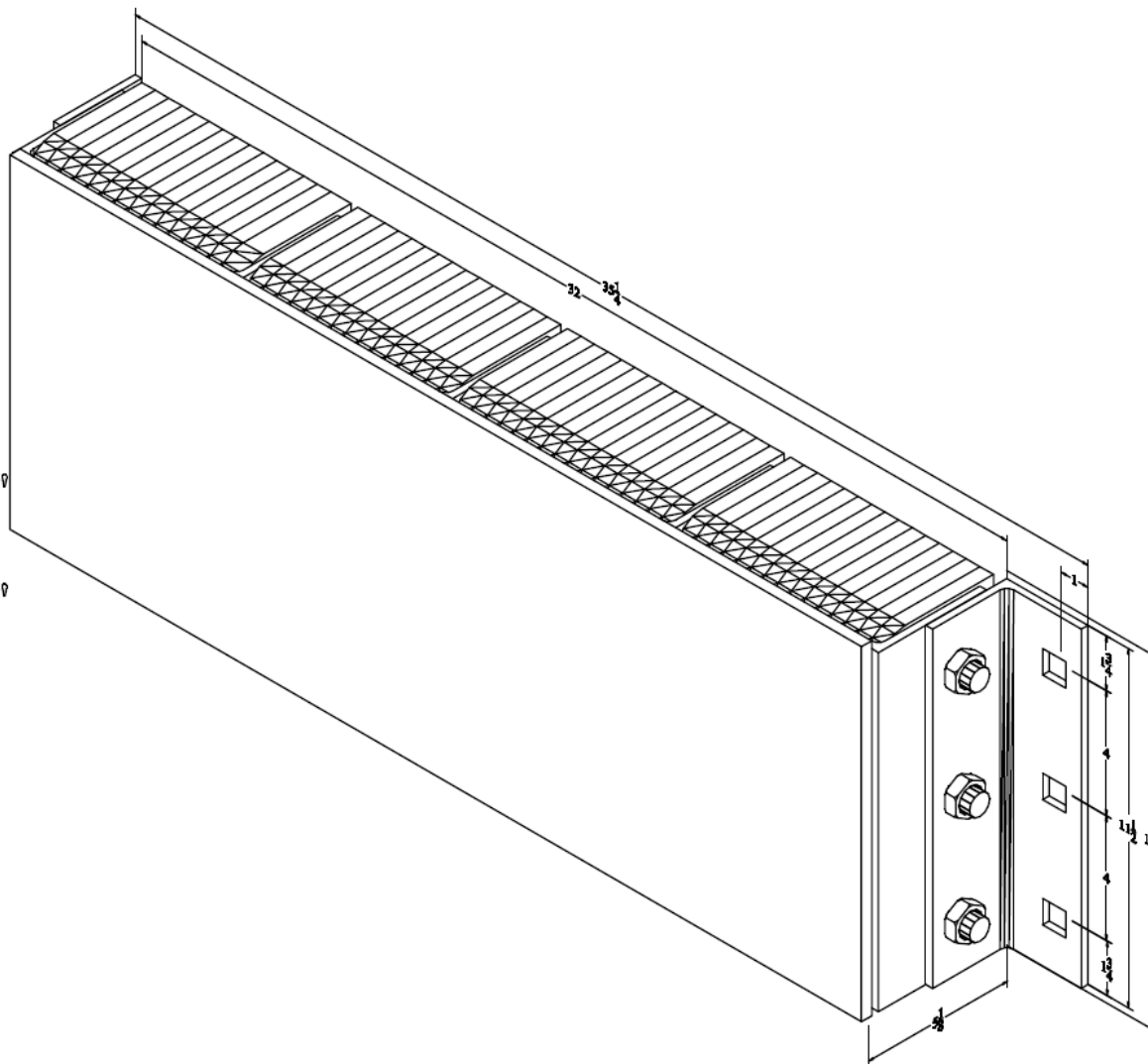
Face Plate Size 3/8"x12"x31-1/2"

Bolt Heads Are Inscribed

"DURABLE CORP"

Date: 11/02/15

All measurements are +/- 1/8"





Koffler Sales Company

Specialists in Floor and Wall Protection
For Over 50 Years!

Steel-Face Dock Bumpers

Model: B4520-11SF

MODEL: *B4520-11SF*

Size

Projection 5-1/8"

Height 20"

Length:

-Overall 13"

-Anchor Holes 11"

-Rubber 7"

Angle Size (2) 1/4"x3"x3"x19-1/2"

Slot Angle Size (2) 1/4"x3"x4"x20"

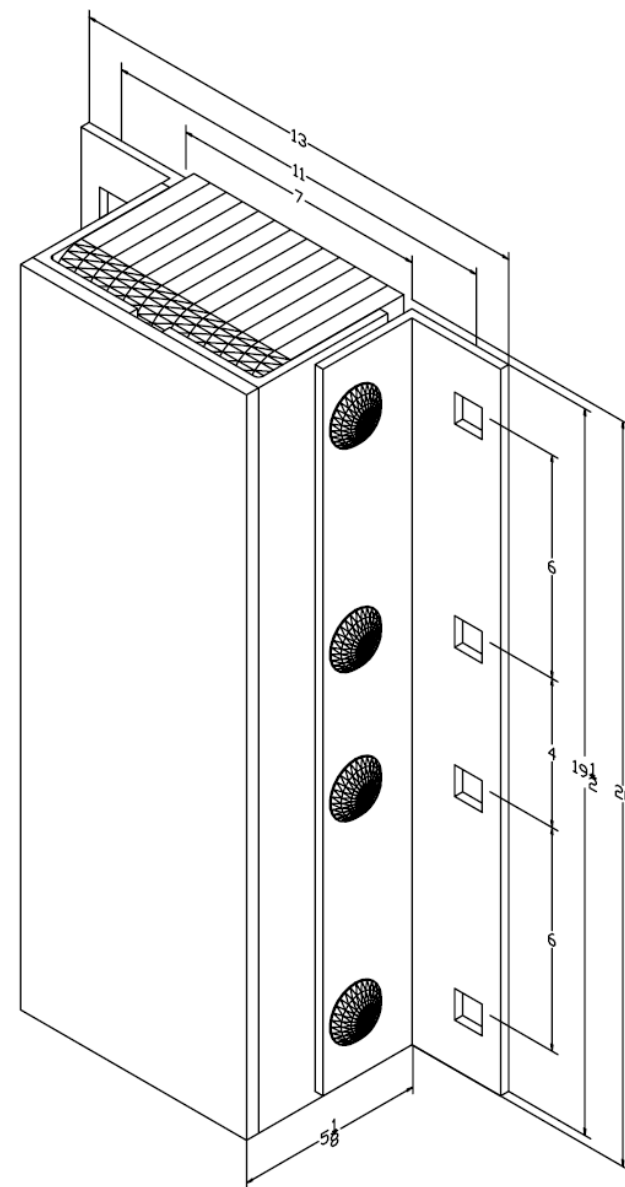
Face Plate Size (1) 3/8"x7"x20"

Bolt Heads Are Inscribed

"DURABLE CORP"

Date: 11/05/07

All measurements are +/- 1/8"





Koffler Sales Company

Specialists in Floor and Wall Protection
For Over 50 Years!

Steel-Face Dock Bumpers

Model: B4520-11SFP1

MODEL: *B4520-11SFP1*

Size

Projection 5-1/8"
Height 20"

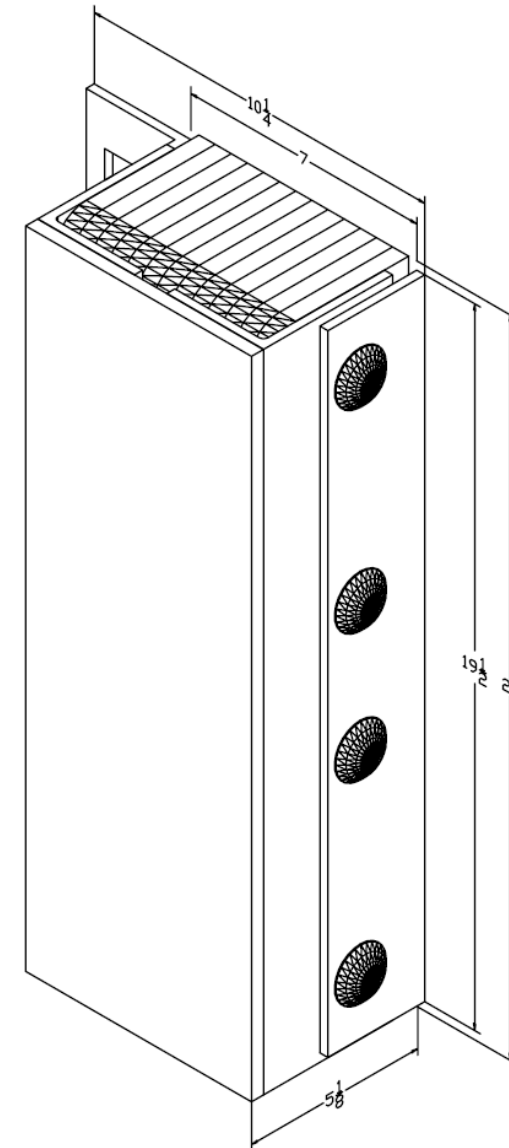
Length:

-Overall 10-1/4"
-Rubber 7"
Angle Size 1/4"x3"x3"x19-1/2"
Plate Size 1/4"x3"x19-1/2"
Slot Angle Size (2) 1/4"x3"x4"x20"
Face Plate Size (1) 3/8"x7"x20"

Bolt Heads Are Inscribed
"DURABLE CORP"

Date: 11/05/07

All measurements are +/- 1/8"





Koffler Sales Company

Specialists in Floor and Wall Protection
For Over 50 Years!

Steel-Face Dock Bumpers

Model: B4520-11-ST

MODEL: *B4520-11-ST*

Size

Projection 3-7/8"

Height 20"

Length:

-Overall 13"

-Anchor Holes 11"

-Rubber 7"

Angle Size 1/4"x3"x3"x19-1/2"

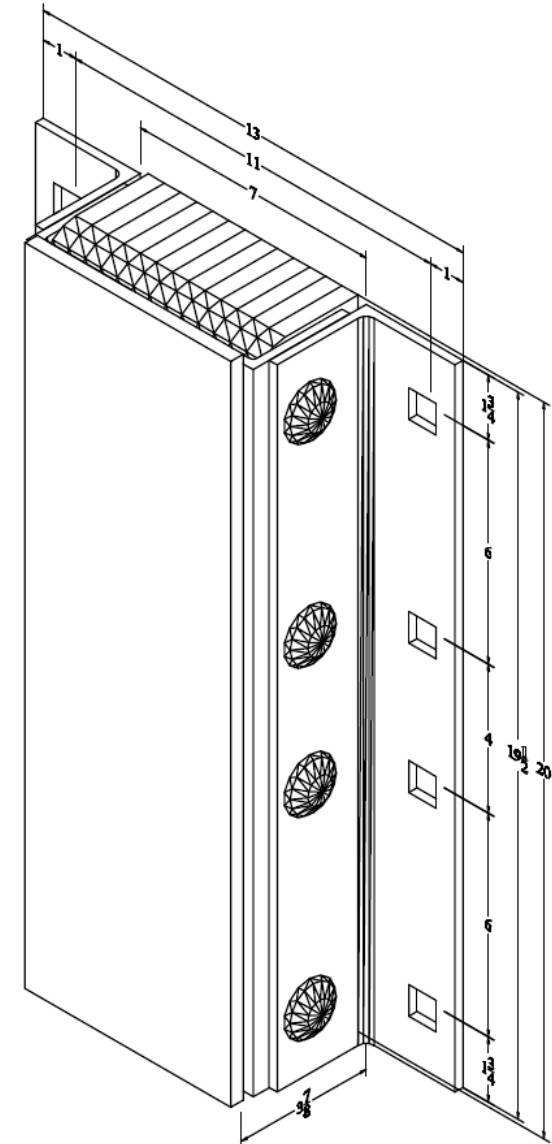
Slot Angle Size 1/4"x3"x3"x19-1/2"

Face Plate Size 3/8"x6-3/8"x19-7/8

Bolt Heads Are Inscribed
"DURABLE CORP"

Date: 11/02/15

All measurements are +/- 1/8"





Koffler Sales Company

Specialists in Floor and Wall Protection
For Over 50 Years!

Steel-Face Dock Bumpers

Model: B610-14SF

MODEL: *B4520-11-STP1*

Size

Projection 3-7/8"

Height 20"

Length:

-Overall 10-1/4"

-Rubber 7"

Angle Size 1/4"x3"x3"x19-1/2"

Plate Size 1/4"x3"x19-1/2"

Slot Angle Size 1/4"x3"x3"x19-1/2"

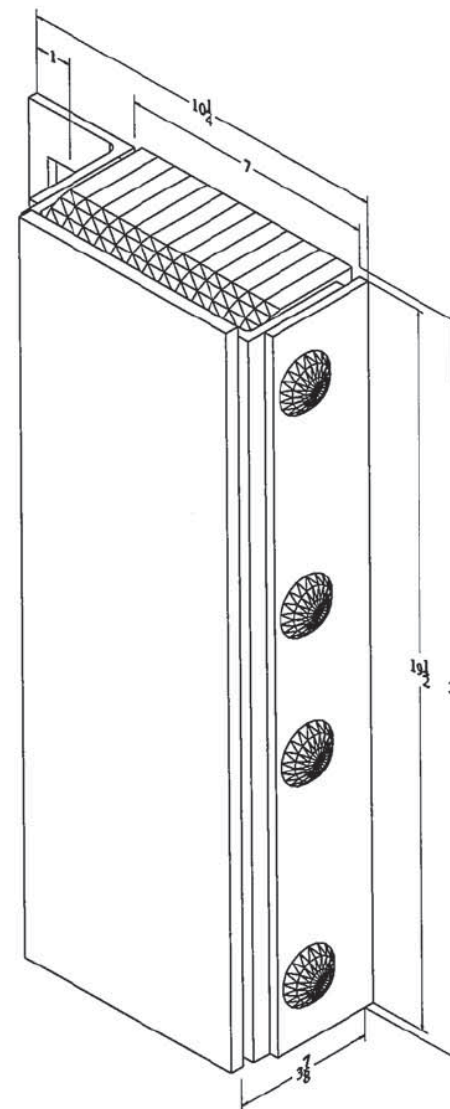
Face Plate Size 3/8"x6-3/8"x19-7/8

Bolt Heads Are Inscribed

"DURABLE CORP"

Date: 06/08/11

All measurements are +/- 1/8"





Koffler Sales Company

Specialists in Floor and Wall Protection
For Over 50 Years!

Steel-Face Dock Bumpers

Model: B4524-11SF

MODEL: *B4524-11SF*

Size

Projection 5-1/8"

Height 24"

Length:

-Overall 13"

-Anchor Holes 11"

-Rubber 7"

Angle Size (2) 1/4"x3"x3"x23-1/2"

Slot Angle Size (2) 1/4"x3"x4"x24"

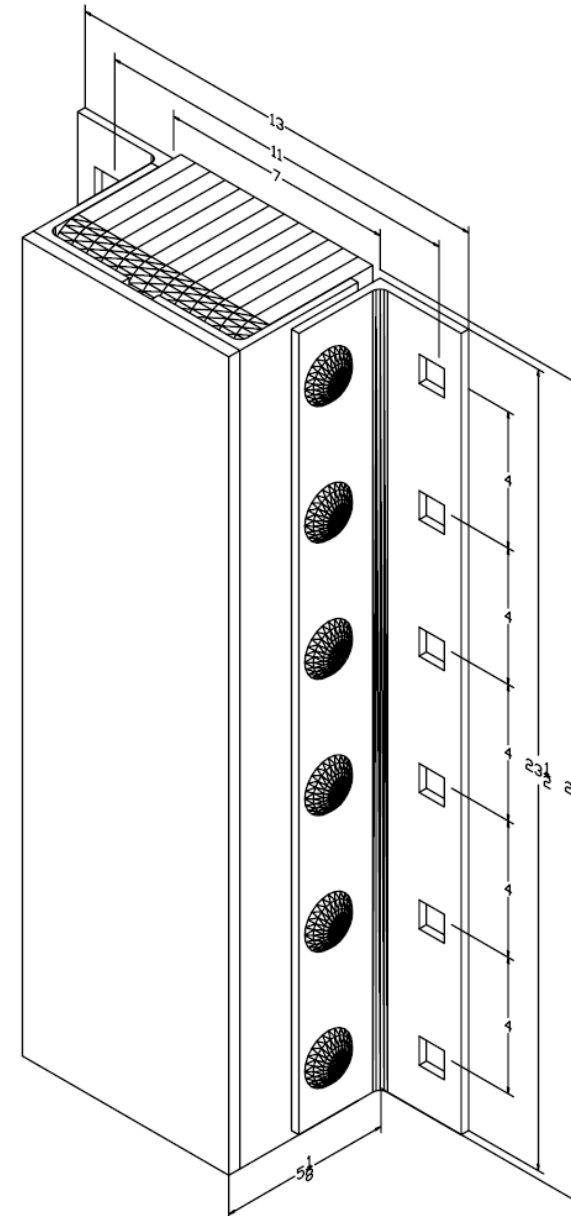
Face Plate Size (1) 3/8"x7"x24"

Bolt Heads Are Inscribed

"DURABLE CORP"

Date: 11/05/07

All measurements are +/- 1/8"





Koffler Sales Company

Specialists in Floor and Wall Protection
For Over 50 Years!

Steel-Face Dock Bumpers

Model: B4524-11-SFP1

MODEL: *B4524-11-SFP1*

Size

Projection 5-1/8"

Height 24"

Length:

-Overall 10-1/4"

-Rubber 7"

Angle Size (1) 1/4"x3"x3"x23-1/2"

Plate Size (1) 1/4"x3"x23-1/2"

Slot Angle Size 1/4"x3"x4"x23-1/2"

Face Plate Size (1) 3/8"x7"x24"

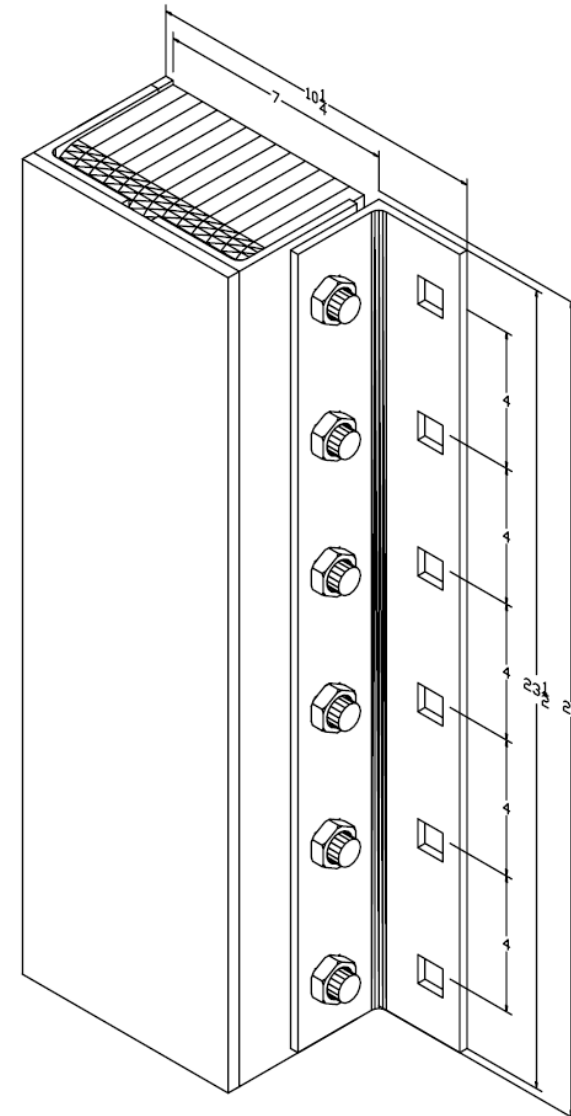
Bolt Heads Are Inscribed

"DURABLE CORP"

Date: 04/07/09

All measurements are +/- 1/8"

Confidential -- Property of Durable Corporation





Koffler Sales Company

Specialists in Floor and Wall Protection
For Over 50 Years!

Steel-Face Dock Bumpers

Model: B4524-11-ST

MODEL: *B4524-11-ST*

Size

Projection 4-1/8"

Height 24"

Length:

-Overall 13"

-Anchor Holes 11"

-Rubber 7"

Angle Size 1/4"x3"x3"x23-1/2"

Slot Angle Size 1/4"x3"x3"x23-1/2"

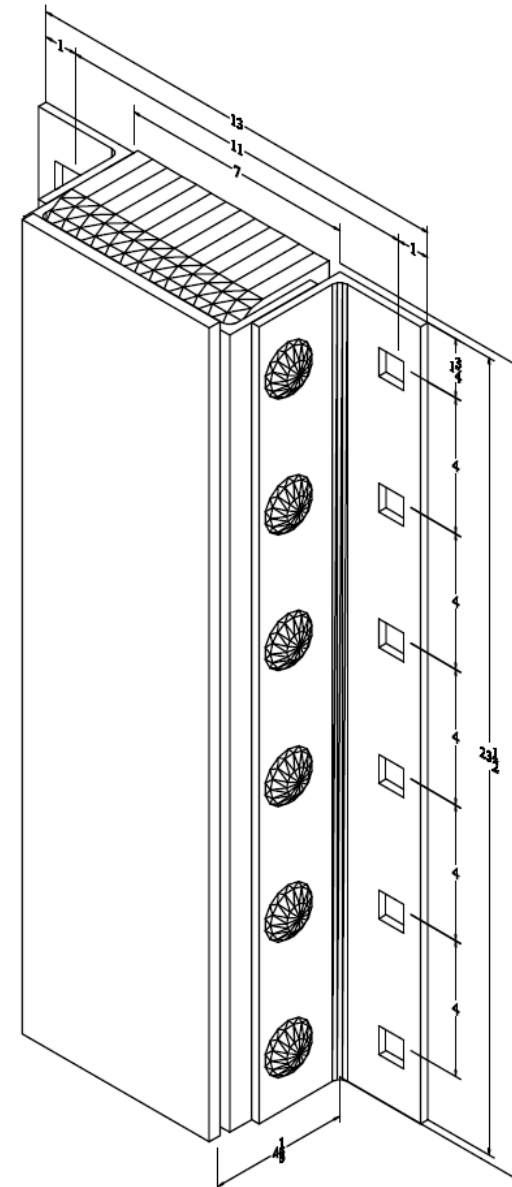
Face Plate Size 3/8"x6-3/8"x24"

Bolt Heads Are Inscribed
"DURABLE CORP"

Date: 11/02/15

All measurements are +/- 1/8"

Confidential -- Property of Durable Corporation





Koffler Sales Company

Specialists in Floor and Wall Protection
For Over 50 Years!

Steel-Face Dock Bumpers

Model: B610-14SF

MODEL: *B4536-11-SF*

Size

Projection 5-1/8"

Height 36"

Length:

-Overall 13"

-Anchor Holes 11"

-Rubber 7"

Angle Size (2) 1/4"x3"x3"x35-1/2"

Slot Angle Size 1/4"x3"x4"x35-1/2"

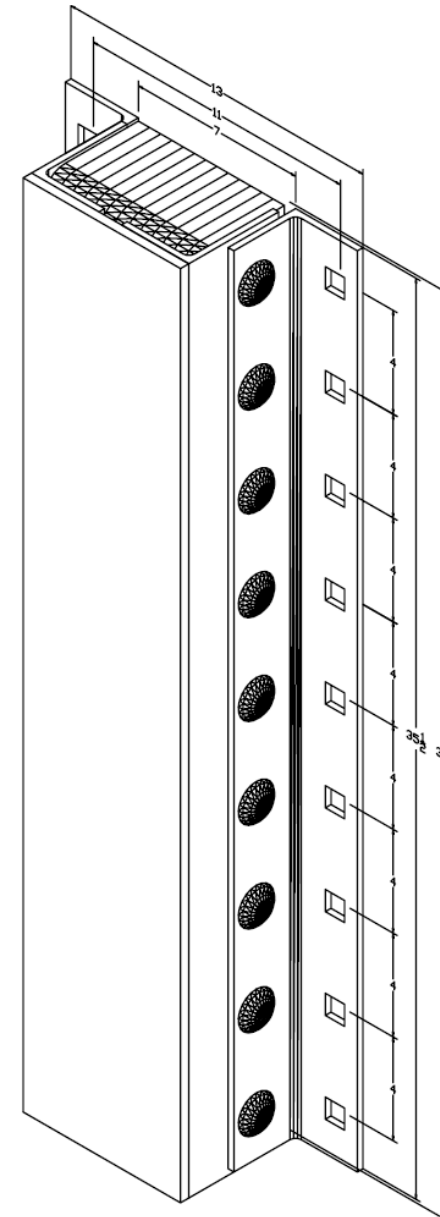
Face Plate Size (1) 3/8"x7"x36"

Bolt Heads Are Inscribed

"DURABLE CORP"

Date: 04/07/09

All measurements are +/- 1/8"





Koffler Sales Company

Specialists in Floor and Wall Protection
For Over 50 Years!

Steel-Face Dock Bumpers

Model: B610-14SF

MODEL: B4536-11-SFP1

Size

Projection 5-1/8"

Height 36"

Length:

-Overall 10-1/4"

-Rubber 7"

Angle Size (1) 1/4"x3"x3"x35-1/2"

Plate Size (1) 1/4"x3"x35-1/2"

Slot Angle Size 1/4"x3"x4"x35-1/2"

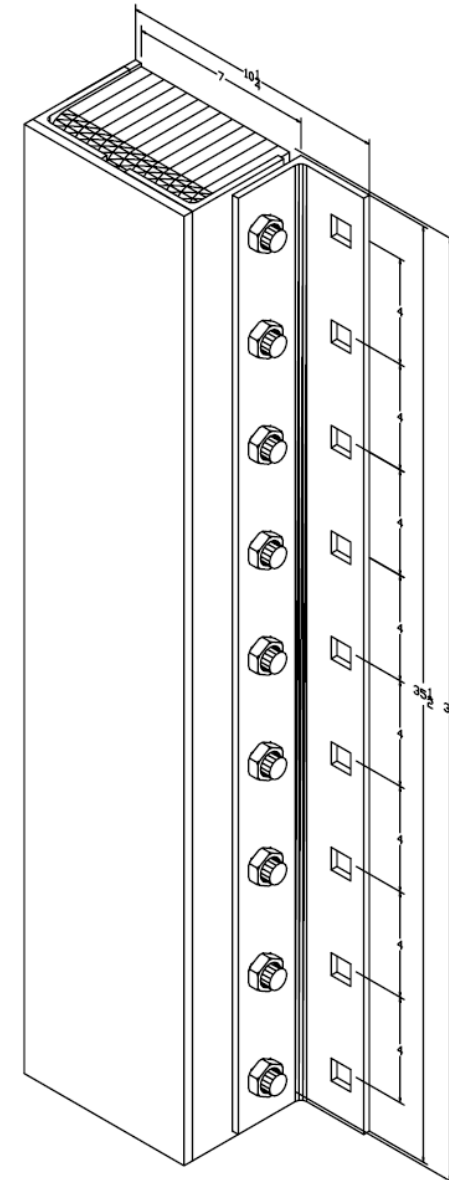
Face Plate Size (1) 3/8"x7"x36"

Bolt Heads Are Inscribed

"DURABLE CORP"

Date: 04/07/09

All measurements are +/- 1/8"



Attention!

Images might differ from the actual product.
For accurate information please consult the
blueprints.

Thank you