

Instructions

Contents



Power drill and hook not included

SlatWall MX Strip™
P/N: HSS196
HSS148

Installation Instructions

- 1. Fasten onto wall using slat wall channels for mounting
2. Pre-drill 5/32"Ø holes into **SlatWall MX™ Strip** channels thru the aluminum channel inserts to locate panel onto structural wall components (ie wall studs) wherever possible. **IMPORTANT! Screws must be installed thru the aluminum channel inserts to ensure highest load capacity strength. Failure to do so may cause the unit to break.**
3. Use as many wall studs as possible
- 4. It is important to also position screws at either end of the SlatWall MX™ Strip . If there is no stud at these locations use appropriate wall anchors.
5. Pre-drilled holes should be located every 12"-16"
6. Depending on the exact nature of your screws, countersinking all pre-drilled holes may be necessary so screw heads do not protrude into channel. Screw heads protruding into channel may inhibit movement of hooks.
7. Use a level to ensure level horizontal mounting
8. Using proper size fastener, screw panel into wall
9. Do not over tighten screws
- Due to the manufacturing process, a slight bow in the SlatWall MX™ Strip is normal. This bow is naturally removed by the installation process.



48" strip shown



96" strip shown

Any questions or problems, please contact us:

KOFFLER SALES COMPANY
785 Oakwood Road
Suite C-100
Lake Zurich, IL 60047-1524

Toll-Free: 1-888-355-MATS (6287)
Phone: 1-847-438-1152
E-mail info@kofflersales.com

Monday - Friday 8:30 am - 4:30 pm CST



Find more great Garage Gear at
www.kofflersales.com



Helpful Hint!

Remove protective plastic film
after installation

Accessories



Peg Hooks



Baskets



Bins

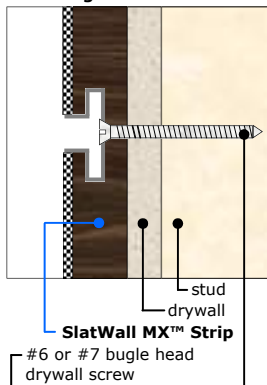


Organizers

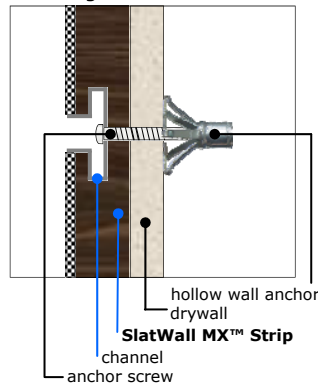


Mounting Fasteners

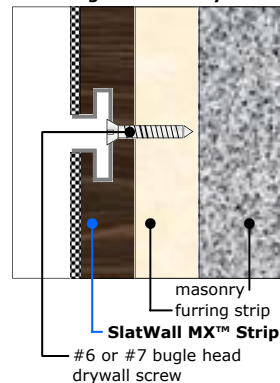
Fastening into wall stud



Fastening into hollow wall



Fastening into masonry wall



CAUTION!

Keep heavy loads at least 3 inches away from either ends of SlatWall MX™ Strip. Hanging heavy loads close to the ends can cause the product to break. Also keep any heavy loads at least 6 inches apart.



Koffler Sales Company
Specialists in Floor and Wall Protection
For Over 50 Years!