

# Instructions

## Contents



Power drill and hook not included

SlatWall MX™  
P/N: HSL4896  
HSL4848  
HSL2448

## Installation Instructions

### ⇒ Mounting into structural wall components (ie wall studs)

1. Fasten onto wall using slat wall channels for mounting
2. For items with Channel Strips, slide out Channel Strips
3. Pre-drill holes into **SlatWall MX™** channels to locate panel onto structural wall components (ie wall studs) wherever possible. Use a level to ensure level horizontal mounting
4. Use as many wall studs as possible
5. Pre-drilled holes should be located vertically every 12"-16" (appx every 4th slat)
6. Countersink all pre-drilled holes so screw heads do not protrude into channel. Screw heads protruding into channel may inhibit movement of hooks.
7. If mounting multiple panels, mount bottom panel first. Panels have a projecting lip which allows panels to be fitted into one another
8. Using proper size fastener, screw panel into wall
9. Do not over tighten screws.
10. For items with Black Channel Strips, slide Black Channel Strip in to hide fasteners

### ⇒ Mounting into hollow wall

1. Fasten onto hollow wall using slats (not channels) for mounting
2. Position panel onto wall. Use a level to ensure level horizontal mounting
3. Drill holes thru panel's slats and into hollow wall. Holes should be located appx 16" on centers—therefore vertically every 4th slat appx
4. Remove panel from wall
5. Install hollow wall anchors into wall
6. Locate panel onto wall and install screws into anchors
  - Due to the manufacturing process, a slight bow in the SlatWall MX™ panel is normal. This bow is naturally removed by the installation process.

Any questions or problems, please contact us:

KOFFLER SALES COMPANY  
785 Oakwood Road  
Suite C-100  
Lake Zurich, IL 60047-1524

Toll-Free: 1-888-355-MATS (6287)  
Phone: 1-847-438-1152  
E-mail info@kofflersales.com

Monday - Friday 8:30 am - 4:30 pm CST

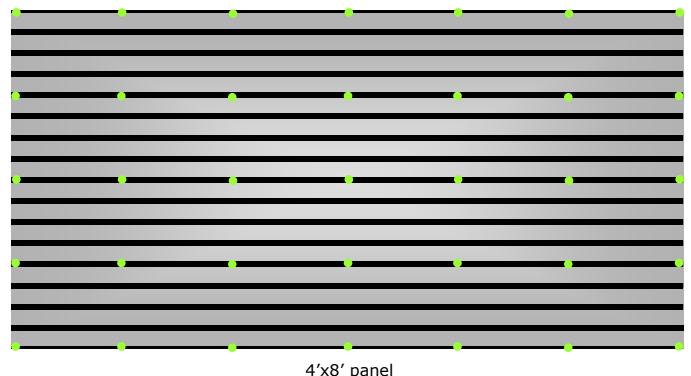
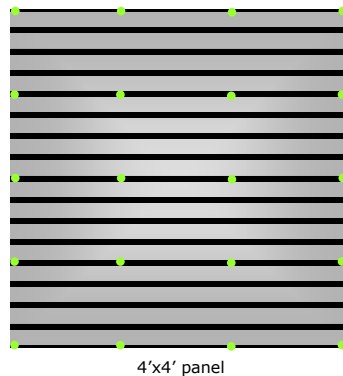
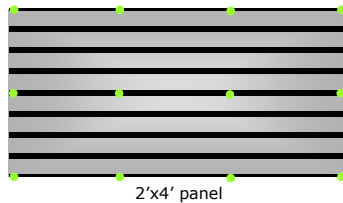


### Helpful Hint!

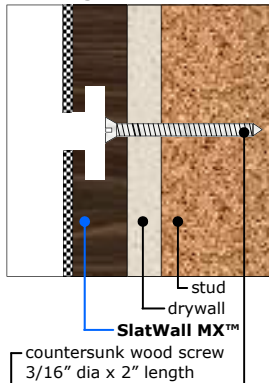
Remove protective plastic film from metal fascia after installation.

### CAUTION!

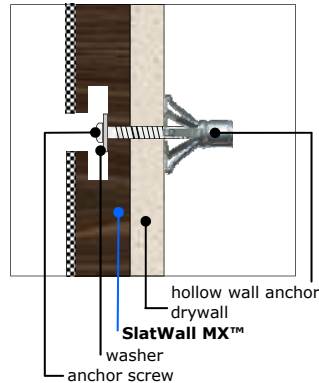
Keep heavy loads at least 3 inches away from either ends of SlatWall MX™ Panel. Hanging heavy loads close to the ends can cause the panel to break. Also keep any heavy loads hung on the same slat at least 6 inches apart.



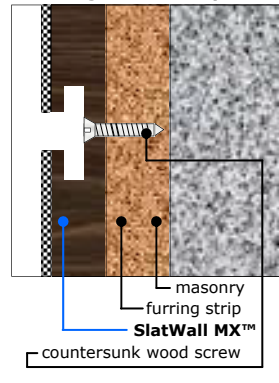
### Fastening into wall stud



### Fastening into hollow wall



### Fastening into masonry wall



### Accessories

