

# SHOWER SYSTEM



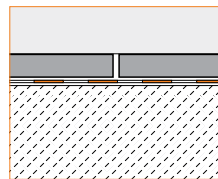
## INNOVATIVE SOLUTIONS FOR CERAMIC AND STONE TILE

### INTEGRATED BONDED WATERPROOFING SYSTEM FOR TILED SHOWERS

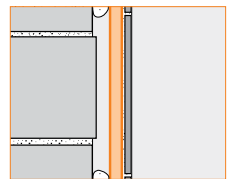
The Schluter®-Shower System is an integrated family of products that together form a fully bonded, watertight assembly for tiled showers. Unlike shower pan liners in conventional assemblies, bonded waterproof membranes, such as Schluter®-KERDI, bond directly to the mortar bed and protect it from becoming saturated with regular use. In addition, the KERDI membrane or Schluter®-KERDI-BOARD waterproof building panel protect wall cavities from vapor penetration. The Schluter®-KERDI-DRAIN and Schluter®-KERDI-LINE floor drains provide a simple and secure connection to the KERDI membrane at the top of the assembly. Other components include the Schluter®-KERDI-SEAL-PS/-MV prefabricated seals and the Schluter®-KERDI-FIX adhesive/sealant, used to treat protrusions through the membrane, and the Schluter®-KERDI-SHOWER and Schluter®-KERDI-BOARD prefabricated substrates, which can reduce weight and installation time. The integrated Schluter®-Shower System eliminates leaks, reduces the potential for efflorescence and mold growth in the system, and dramatically reduces total installation time to ensure success and make shower installation easier than ever.



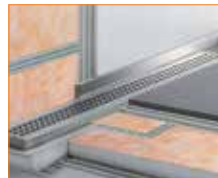
8.1 Schluter®-KERDI



12.1 Schluter®-KERDI-BOARD



8.2 Schluter®-KERDI-DRAIN  
8.7 Schluter®-KERDI-LINE



8.3 Schluter®-KERDI-SHOWER-ST  
8.8 Schluter®-KERDI-SHOWER-L/-LS



8.3 Schluter®-KERDI-SHOWER  
-SR/-SC/-SB



12.1 Schluter®-KERDI-BOARD  
-SB/-SC/-SN



8.1 Schluter®-KERDI-BAND/  
-KERECK/-KERS



8.1 Schluter®-KERDI-SEAL-PS/-MV



14.1 Schluter®-SHOWERPROFILE-S/-R

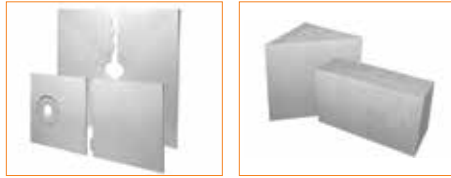


14.1 Schluter®-SHOWERPROFILE  
-WS/-WSK





## Prefabricated Shower Substrates



### 8.3 Schluter®-KERDI-SHOWER-ST/-SB



### 8.3 Schluter®-KERDI-SHOWER-SC/-SR



### 8.8 Schluter®-KERDI-SHOWER-L/-LS



### 12.1 Schluter®-KERDI-BOARD-SB/-SC



### 12.1 Schluter®-KERDI-BOARD-SN

Schluter® prefabricated shower substrates provide an alternative to shower bases constructed of mortar and other shower elements constructed of framing and solid backing. The shower tray, curb, ramp, bench, and niche are especially useful in large-scale, repetitive jobs, such as hotels, apartments, and condominiums for the significant time savings that can be realized.

## Application and Function

**8.3 Schluter®-KERDI-SHOWER-ST/-SC/-SR/-SB** are prefabricated substrates, made of expanded polystyrene foam, for use in conjunction with the KERDI waterproofing membrane. The KERDI-SHOWER-ST sloped shower tray is specifically designed to accept the KERDI-DRAIN and is available in 48" x 48" (122 x 122 cm), 32" x 32" (81 x 81 cm), and 24" x 24" (61 x 61 cm) sizes.

### 8.3 Schluter®-KERDI-SHOWER-ST/-SC/-SB and KERDI-LINE-L/-LS

| Property                          | Method             | Value   |
|-----------------------------------|--------------------|---|
| Density                           | ASTM D3575         | 2.75 lb/ft <sup>3</sup> (44 Kg/m <sup>3</sup> ) |
| Compressive Strength <sup>1</sup> | ASTM D3575 & D1621 | 48 psi (331 kPa)                                |
| Linear Expansion                  | ASTM D696          | 3.5 x 10 <sup>-5</sup> /°F                      |
| Maximum Service Temperature       | -                  | 175 °F (79 °C)                                  |

<sup>1</sup> Compressive strength measured at 10% deflection of foam

### 8.3 Schluter®-KERDI-SHOWER-SR

| Property                    | Method     | Value  |
|-----------------------------|------------|--|
| Density                     | ASTM D3575 | 4.0 lb/ft <sup>3</sup> (64 Kg/m <sup>3</sup> ) |
| Linear Expansion            | ASTM D696  | 3.5 x 10 <sup>-5</sup> /°F                     |
| Maximum Service Temperature | -          | 175 °F (79 °C)                                 |

x 60" (81 x 152 cm), and 72" x 72" (183 x 183 cm) sizes. KERDI-SHOWER-SC is a prefabricated curb that can be used in conjunction with any shower base. Curb dimensions are 48" x 6" x 4-1/2" (122 x 15 x 11.5 cm). KERDI-SHOWER-SR is a ramp designed to facilitate the construction of access ramps for tiled showers. Ramp dimensions are 48" x 15-7/8" x 1-1/2" (122 x 40 x 3.8 cm). The KERDI-SHOWER-SB shower bench is available in triangular and rectangular configurations in the following sizes (width x depth x height). The triangular benches are 16" x 16" x 20" (41 x 41 x 51 cm). The rectangular benches are 32" x 11-1/2" x 20" (81 x 29 x 51 cm), 42" x 11-1/2" x 20" (107 x 29 x 51 cm), 48" x 11-1/2" x 20" (122 x 29 x 51 cm), 32" x 16" x 20" (81 x 41 x 51 cm) and 48" x 16" x 20" (122 x 41 x 51 cm).

**8.8 Schluter®-KERDI-SHOWER-L/-LS** are prefabricated expanded polystyrene sloped trays with integrated KERDI waterproofing specifically designed to accept the KERDI-LINE linear drain. The trays are available for wall (-LS) or center (-L) drain placement and are available in 39" x 39" (100 x 100 cm) and 55" x 55" (140 x 140 cm) sizes.

**12.1 Schluter®-KERDI-BOARD-SB/-SC** are prefabricated substrates, made of Schluter®-KERDI-BOARD, which integrate with the Schluter®-Shower System. The substrates are waterproof and ready for tile, leaving only sealing of joints and corners to complete waterproofing. The KERDI-BOARD-SB shower bench is available in triangular and rectangular configurations in the followings sizes (width x depth x height). The triangular benches are 16" x 16" x 20" (41 x 41 x 51 cm) and 24" x 24" x 20" (61 x 61 x 51 cm). Rectangular benches are 38" x 16" x 20" (97 x 41 x 51 cm) and 48" x 11-1/2" x 20" (122 x 29 x 51 cm). The KERDI-BOARD-SC shower curb can be used in conjunction with any shower base.

Curb dimensions are 38" x 6" x 4-1/2" (97 x 15 x 11.5 cm) and 48" x 6" x 4-1/2" (122 x 15 x 11.5 cm).

**12.1 Schluter®-KERDI-BOARD-SN** is a prefabricated shower niche made of KERDI-BOARD that can be installed in both KERDI and KERDI-BOARD wall assemblies. The shower niche features a 1/2" (12.5 mm) -thick by 2" (50 mm) -wide integrated bonding flange and is available in 12" x 6" (30 x 15 cm), 12" x 12" (30 x 30 cm), 12" x 20" (30 x 51 cm), and 12" x 28" (30 x 71 cm) sizes.

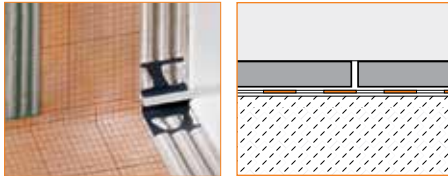
## Material Properties and Areas of Application

SHOWER-ST/-SC/-SR/-SB/-L/-LS prefabricated substrates are manufactured using lightweight expanded polystyrene. The products require no special disposal and can be recycled. No CFCs or HCFCs are present in either the products or in the manufacturing process. The polystyrene foam tray and curbs have a density of 2.75 lb/ft<sup>3</sup> (44 kg/m<sup>3</sup>) and the shower ramp, 4.0 lbs/ft<sup>3</sup>, all with a 48 psi (331 kPa) compressive strength at 10% deformation. It is serviceable in temperatures up to 175°F (79 °C). The expanded polystyrene used to manufacture KERDI-SHOWER-ST/-SC/-SR is treated with a flame retarding agent. Expanded polystyrene should not be exposed to hydrocarbons, esters, amines, and aldehydes. All will deteriorate foam. Exposure to ultraviolet rays (sunlight) for long periods of time will result in partial degradation (dusting) at the surface.

KERDI-BOARD-SB/-SC prefabricated substrates are manufactured using KERDI-BOARD, made from extruded polystyrene foam, with a cement-free reinforcement layer laminated to both sides with an anchoring fleece webbing. The surface features printed gridlines consisting of 3/8"

x 3/8" (10 x 10 mm) squares for precise cutting. KERDI-BOARD is waterproof and vapor-retardant and can withstand all chemical stresses that typically occur in conjunction with ceramic tile coverings. KERDI-BOARD will not warp, rot, or decay. It is serviceable in temperatures up to 158°F (70 °C).

## Waterproofing Membrane



### 8.1 Schluter®-KERDI

Since traditional shower pan liners are placed below the mortar setting bed in conventional assemblies, moisture is allowed to saturate the mortar bed. This can increase the risk of leakage, cause efflorescence, and foster mold growth. Bonded waterproof membranes, such as KERDI, are set on top of the mortar bed and protect it from becoming saturated, thus eliminating the problems associated with traditional systems.

## Application and Function

**8.1 Schluter®-KERDI** is a pliable, sheet-applied, bonded waterproof membrane and vapor retarder with limited crack-bridging capabilities. It is made of soft polyethylene, which is covered on both sides with a special fleece webbing to anchor the membrane in the thin-set mortar. Tiles can be installed directly on the KERDI membrane using the thin-bed method. Other trowel-applied covering materials, such as plaster, can also be used. **Schluter®-KERDI-DS** is a bonded waterproof membrane and vapor retarder with very low water vapor permeance for use in continuous use steam rooms and similar applications.

Various KERDI waterproofing accessories are available. Preformed, seamless corners include the following. KERDI-KERECK-F are used to seal 90° inside and outside corners. KERDI-KERS-B are used to seal 135° corners at triangular shower benches and neo-angle shower curbs. KERDI-KERS are used to seal floor/wall/shower base connections in curbless shower applications where the KERDI-LINE linear drain is installed adjacent to the wall. KERDI-SEAL-PS/-MV are prefabricated sections of KERDI

with overmolded rubber gaskets that are used to seal pipe protrusions through the KERDI waterproofing membrane (e.g., at showerheads and tub spouts) and protect moisture-sensitive backing panels at the mixing valve. Use KERDI-BAND, in widths of 5" (12.5 cm), 7-1/4" (18.5 cm), or 10" (25 cm), to seal butt joints or corner joints. KERDI-FLEX, in 5" (12.5 cm) or 10" (25 cm) widths, is used to seal expansion joints or flexible edge joints.

## Material Properties and Areas of Application

KERDI features a modified polyethylene (PEVA) core with non-woven polypropylene on both sides. KERDI-DS features a high-density polyethylene (HPDE) core with non-woven polypropylene on both sides. KERDI is 8-mil thick and has a water vapor permeance of 0.90 perms, when tested according to ASTM E96, using Procedure E at 90% relative humidity. KERDI-DS is 20-mil thick and features additives to produce a water vapor permeance of 0.18 perms. KERDI and KERDI-DS are waterproof and resistant to most chemicals commonly encountered in tiled environments. They are resistant to aging and will not rot. KERDI and KERDI-DS are highly resistant to saline solutions, acid and alkaline solutions, many organic solvents, alcohols, and oils. Information regarding their resistance to specific substances can be provided if concentration, temperature, and duration of exposure are known. For acid-resistant coverings, use an epoxy adhesive to set and grout the tile.

KERDI and KERDI-DS are used on wall and floor surfaces where protection against the penetration of moisture or other harmful substances is necessary. KERDI is suitable for showers, intermittent use steam showers, tub surrounds, and areas surrounding swimming pools. Industrial applications include the food industry, breweries, and dairies. KERDI-DS is suitable for use in continuous use steam rooms and other applications with similar vapor management requirements.

KERDI and KERDI-DS meet the American National Standard for Load Bearing, Bonded, Waterproof Membranes for Thin-Set Ceramic Tile and Dimension Stone Installations (ANSI A118.10). The membranes are listed by cUPC® and evaluated by ICC-ES (Report Nos. ESR-2467 and PMG-1204). For copies of these

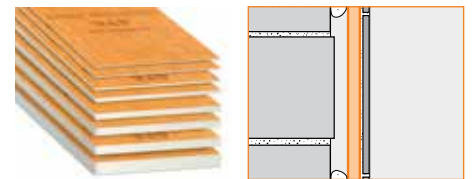
documents, please contact Schluter®-Systems at 800-472-4588 (USA) or 800- 667-8746 (Canada) or by e-mail at [info@schluter.com](mailto:info@schluter.com). Links to the documents can also be accessed at [www.schluter.com](http://www.schluter.com).

KERDI and KERDI-DS have been evaluated according to the "Standard Method for the Testing and Evaluation of Volatile Organic Chemical Emissions from Indoor Sources Using Environmental Chambers, Version 1.1" for California Specification 01350 and found to comply with the VOC requirements. California Specification 01350 is referenced by various green building standards and rating systems.

## Waterproof Building Panel

The KERDI-BOARD waterproof building panel simplifies shower installation by combining the tile backing and waterproofing installation into a single step. KERDI-BOARD gives tile setters more control over their projects by providing them with the means to simply and easily create ideal substrates for tile. Unsuitable substrates can be remedied and new substrates can be created while keeping the requirements of the tile covering in mind.

## Application and Function



### 12.1 Schluter®-KERDI-BOARD

**12.1 Schluter®-KERDI-BOARD** is a multifunctional tile substrate and building panel, which can also be used for creating bonded waterproofing assemblies with tile coverings. It consists of an extruded polystyrene foam panel, with a special reinforcement material on both sides and fleece webbing for effective anchoring in thin-set mortar.

With the available panel thicknesses of 3/16", 3/8", 1/2", 5/8", 3/4", 1", 1-1/2", and 2" (5, 9, 12.5, 15, 19, 25, 38, and 50 mm), KERDI-BOARD covers a broad range of application areas for creating flat, level, plumb, square, and dimensionally stable substrates for the installation of ceramic and natural stone tiles. With





suitable preparation of the abutting seams and joint areas, the panel may be used for bonded waterproofing assemblies.

KERDI-BOARD is suitable for: creating tile substrates on masonry walls, wood or metal framing, and other finished wall surfaces; creating straight or curved partition walls; creating straight or curved bathtub and shower surrounds; concealing pipes and columns; as well as creating bathtub platforms, vanities, storage shelves, countertops, and various other bathroom structures.

The boards are simply cut to size with a utility knife. The gridlines, which are printed on the surface, are helpful for neat and quick cuts and installation. KERDI-BOARD can be fully adhered in wall areas or spot-bonded with thin-set mortar. If necessary, the material may be secured with additional wall anchors. In the case of stud framing, KERDI-BOARD is attached with screws and washers from the matching hardware system. Tiles can be installed directly over KERDI-BOARD using the thin-set method.

L-shaped and U-shaped KERDI-BOARD panels are available for creating pipe and column coverings, and grooved panels are available for creating curved elements. Schluter®-Systems also offers profiles and attachment hardware for wall connections and finishing edges, as well as matching wall anchors and screws.

## Material Properties and Areas of Application

KERDI-BOARD is made from extruded polystyrene foam, with a cement-free reinforcement layer laminated to both sides and an anchoring fleece webbing. The surface of the board has gridlines consisting of 3/8" x 3/8" (10 x 10 mm) squares printed on one side.

KERDI-BOARD is waterproof and vapor retardant and can withstand all chemical stresses that typically occur in conjunction with ceramic tile coverings. KERDI-BOARD may be used in bonded waterproofing assemblies where required. KERDI-BOARD is completely flat and will not warp, even with one-sided exposure to temperature and moisture fluctuations. It will not rot or decay. KERDI-BOARD can be used in a multitude of different application areas. In special cases, the suitability of the material

## 12.1 Schluter®-KERDI-BOARD

| Property                     | Method                | Value  |
|------------------------------|-----------------------|--|
| Water vapor permeance        | ASTM E96 <sup>1</sup> | 0.36 perms - 1/2" (12.5 mm)  |
| Thermal resistance (R-value) | ASTM C518             | R 9.1 - 2" (50 mm)<br>R 2.2 - 1/2" (12.5 mm)<br>R 0.9 - 3/16" (5 mm) |
| Service temperature range    |                       | -58°F to 158°F (-50°C to 70°C)                                       |
| Flame spread/smoke developed | ASTM E84              | Pass <sup>2</sup>  |
| Thermal barrier evaluation   | NFPA 286              | Pass <sup>2,3</sup>  |

<sup>1</sup> Using the desiccant method at 100°F (38°C) and 90% RH

<sup>2</sup> Per International Building Code Requirements

<sup>3</sup> Porcelain tile used as thermal barrier over 1/2" (12.5 mm) -thick KERDI-BOARD on wood framing

must be verified based on the anticipated chemical and mechanical stresses. The information provided below is intended as general guidelines.

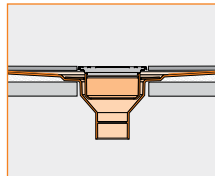
Structures on which KERDI-BOARD is to be installed must be stable and meet any other project-specific requirements. Select a suitable material thickness if using KERDI-BOARD for the construction of freestanding partition walls, shelving, or similar structures, and use reinforcement profiles as necessary. Arrange supports made of KERDI-BOARD at regular intervals consistent with conventional building practices. Select the material thickness and installation method depending on the evenness of the substrate. KERDI-BOARD can be spot-bonded to walls to correct substrate variations or fully embedded in thin-set mortar where walls are sufficiently even and plumb.

## Maintenance

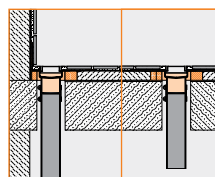
### Storage

KERDI-BOARD should be stored flat. In case of outdoor storage, protect the material from direct sunlight and weather exposure.

## Shower Drains



### 8.2 Schluter®-KERDI-DRAIN



### 8.7 Schluter®-KERDI-LINE

Conventional two-stage drains are designed to connect to shower pan liners below the mortar bed and do not allow a secure, watertight connection to bonded waterproof membranes at the top of the drain assembly. KERDI-DRAIN and KERDI-LINE are designed specifically to ensure a simple and secure connection to bonded waterproof membranes, such as KERDI, at the top of the assembly rather than below it, thereby reducing the risk of leakage, efflorescence, and mold growth.

## Application and Function

**8.2 Schluter®-KERDI-DRAIN** is a floor drain specifically designed to allow connections to KERDI or other load-bearing, bonded waterproof membranes. The membrane is adhered to the large integrated bonding flange to form a waterproof connection at the top of the drain assembly. KERDI-DRAIN consists of a drain casing and fully adjustable grate assembly or covering support to which tile is applied. The grate assembly accommodates a wide range of tile thicknesses and allows lateral and tilt adjustment as well. The covering support is placed flush with the top of the bonding flange and can therefore accommodate any thickness tile covering. The standard KERDI-DRAIN is attached directly to the waste line. The drain casing is available in ABS, PVC, or stainless steel. The plastic drain casings feature a fleece-covered bonding flange. They are available with standard 2" (50 mm) and 3" (75 mm) outlets and attached to the pipe using an appropriate solvent cement. The stainless steel drain casings are available with standard 2" (50 mm) or 3" (75 mm) no-hub outlets or 2" (50 mm) threaded outlet. The no-hub outlets are attached to the pipe using an appropriate mechanical (e.g., flexible or no-hub) coupling. The threaded outlets are attached to the pipe using thread sealing compound or tape. The simple connection to standard drain



outlets makes KERDI-DRAIN suitable for new construction and renovation.

The KERDI-DRAIN adaptor kit is designed to convert clamping ring drains by equipping them with an integrated bonding flange. The adaptor kit includes a stainless steel adaptor ring with an over-molded rubber gasket and a variety of perforated hole patterns that align with most common clamping ring shower drains. The adaptor ring replaces the clamping ring and is attached to the drain body using the clamping ring bolts. This connection is made watertight via the rubber gasket and KERDI-FIX adhesive/sealant. The integrated bonding flange slides into the adaptor ring, with the over-molded rubber gasket ensuring a watertight seal. Commercial KERDI-DRAIN adaptor kits feature a 7-1/2" (191 mm) diameter adaptor ring and are available with a stainless steel bonding flange or an ABS bonding flange. The ABS bonding flange is available in two sizes (standard or extended length) to accommodate different tile assembly thicknesses. The residential KERDI-DRAIN adaptor kit features a 5-1/4" (133 mm) diameter adaptor ring and an ABS bonding flange. The KERDI-DRAIN adaptor kit is particularly useful in renovations where the clamping ring drains are difficult to replace with the standard KERDI-DRAIN (e.g., when they are set in concrete slabs).

The KERDI-DRAIN grate assembly consists of a frame, which can be seamlessly adjusted to the thickness and layout of the ceramic tile or stone covering via the height adjustment collar and lateral adjustment ring, and grates or cleanout covers that are placed within the frame. The 4" (100 mm) standard grate assembly frame features an approximately 1/8" (3 mm) wide reveal after installation and grate/frame combinations are available in stainless steel with plain, chrome, or oil-rubbed bronze finish or anodized aluminum with brushed nickel, brushed copper, or brushed brass finish. The 4" (100 mm) style grate assembly frame features a minimal reveal after installation and can be combined with one of three brushed stainless steel grate options: Floral (E), Curve (F), or Pure (G). The 4" (100 mm) covering support is a square stainless steel plate with KERDI laminated on the surface to allow for bonding of ceramic or stone tile, which creates a virtually invisible drainage line. The 6" (150 mm) square and round stainless steel grate assembly frames feature an approximately 3/16" (5 mm) wide reveal after installation and can be combined with stainless steel grates or cleanout covers. Please note that grate

assemblies included with the plastic KERDI-DRAIN featuring 3" (75 mm) outlets and the residential adaptor kits only allow vertical and tilt adjustment (no lateral adjustment).

**8.7 Schluter®-KERDI-LINE** is a low profile linear floor drain specifically designed for bonded waterproofing assemblies. KERDI-LINE can be installed adjacent to walls or at intermediate locations. The floor can be sloped on a single plane to KERDI-LINE, which enables the use of large-format tiles and creates interesting design opportunities.

KERDI-LINE consists of a formed stainless steel channel body and grate assembly or covering support to which tile is applied.

The channel body features a standard 2" (50 mm) no-hub outlet and is attached to the pipe using an appropriate mechanical (e.g., flexible or no-hub) coupling. The simple connection to standard drain outlets makes KERDI-LINE suitable for new construction and renovation. KERDI-LINE is available with both center and off-set outlets. The off-set outlet is located 8" (20.3 cm) from the edge of the channel body and provides flexibility when obstacles (e.g., floor joists) are encountered during installation. KERDI-LINE includes a corresponding polystyrene foam channel support to set the drain elevation to the corresponding KERDI-SHOWER-L/-LS shower trays. The perimeter of the channel body consists of a bonding flange laminated with a collar made of KERDI. It ensures a simple and secure connection to the bonded waterproofing assembly, both in the floor area and on adjacent walls. KERDI-LINE is available in channel lengths from 20" to 72" (50 cm to 180 cm) in 4" (10 cm) increments. The bonding flange extends approximately 1" (2.5 cm) beyond the channel on all sides.

The KERDI-LINE grate assembly consists of a stainless steel frame that can be seamlessly adjusted to the thickness of the ceramic tile or stone covering – 1/8" to 1" (3 mm to 25 mm) for standard grate assemblies and 1/4" to 23/32" (6 mm to 18 mm) for style grate assemblies – and stainless steel grates that are placed within the frame. The standard grate assembly frame features a 3/8" (10 mm) wide reveal after installation and can be combined with one of two grate options: Closed (A) or Perforated (B). Each standard assembly is available in a brushed or chrome finish. The Perforated (B) option is also available with a locking mechanism (brushed stainless steel, 3/4" – 19 mm frame only)

for applications where tamper resistance is desired or required (e.g., healthcare and education facilities, etc.). The style grate assembly frame features a minimal reveal after installation and can be combined with one of three grate options: Floral (E), Curve (F), or Pure (G). Each style assembly is available in a brushed finish. The covering support is placed flush with the top of the channel body and can therefore accommodate any thickness tile covering.

If KERDI-LINE is placed at shower entrance, it is recommended that grate assembly A or the covering support is chosen and that the drainage openings span the maximum width of the entrance to limit potential overflow; secondary drainage (e.g., KERDI-DRAIN) may be required in the drying area.

**Schluter®-KERDI-LINE-FC** is a stainless steel cover plate for use with KERDI-LINE to create a seamless look in applications where multiple drains are installed end-to-end. KERDI-LINE-FC features a brushed finish, and is designed for use with either the solid or perforated grates with brushed stainless steel frame.

**14.1 Schluter®-SHOWERPROFILE-S/-R** system profiles represent an elegant solution for finishing the area between the floor and the first course of wall tile in a way that eliminates cutting wedges of tile and ensures a consistent elevation of the first course of wall tile in KERDI-LINE applications. SHOWERPROFILE-S consists of a trapezoid-perforated anchoring leg with a groove, which accepts a tapered brushed stainless steel profile that matches the slope of the KERDI-SHOWER-L shower tray. The profile is adjusted to cover the exposed wall area and forms the visible surface. SHOWERPROFILE-R consists of a brushed stainless steel profile and corresponding channel. The profile is adjusted to fit the space between the KERDI-LINE and the wall tile and forms the visible surface in applications where the KERDI-LINE is placed adjacent to a wall.

## Material Properties and Areas of Application

KERDI-DRAIN drain casings are formed using ABS, PVC, or stainless steel 304 (1.4301 = V2A). Plastic drain casings feature a polypropylene fleece webbing. The KERDI-DRAIN adaptor kits feature adaptor rings made of stainless steel 304 (1.4301 = V2A)



with thermoplastic rubber gaskets and adaptor flanges made of stainless steel 304 (1.4301 = V2A) or ABS. Drain grates are available in stainless steel 304 (1.4301 = V2A) and anodized aluminum. The covering support is stainless steel 304 (1.4301 = V2A) with KERDI laminated on the surface.

The KERDI-LINE channel body is formed using stainless steel 316 L (1.4404 = V4A) and features a bonding flange with a KERDI collar laminated on the surface. KERDI is a bonded waterproof membrane made of soft polyethylene, which is covered on both sides with a special fleece webbing to anchor the membrane in the thin-set mortar. The frame and grates are made of stainless steel 316 L (1.4404 = V4A). The channel support is made of pressure-resistant, expanded polystyrene (EPS).

KERDI-DRAIN and KERDI-LINE are suitable for use in residential and commercial applications, including areas subject to foot and wheelchair traffic, such as showers and wet rooms in homes, hotels, schools, healthcare facilities, etc.

Stainless steel can sustain high mechanical stresses and is particularly suitable for applications requiring resistance against chemicals and acids. However, even stainless steel is not resistant to all chemical stresses, and may be affected by hydrochloric acid, hydrofluoric acid or certain chlorine, chloride, and brine concentrations, which may be present in detergents or swimming pools. In special cases, the suitability of the selected floor drainage system must be verified based on the anticipated chemical, mechanical, and/or other stresses.

Anodized aluminum retains a uniform appearance during normal use. The surface, however, is susceptible to scratching and wear and may be damaged by grout or setting material. Therefore, these materials must be removed immediately.

Various configurations of KERDI-DRAIN and KERDI-LINE are listed by UPC®, CSA, ICC-ES PMG and NSF. Relevant industry standard guidelines for floor drains with integrated bonding flange include method B422 in the Tile Council of North America's (TCNA) Handbook for Ceramic Tile Installation and Method 326DR in the Terrazzo, Tile and Marble Association of Canada (TTMAC) Specification Guide 09300 Tile Installation Manual.

The KERDI-LINE-FC is roll-formed using stainless steel 316 L (1.4404 = V4A).

The SHOWERPROFILE-S anchoring leg is made of recycled, rigid PVC. The SHOWERPROFILE-S/-R profiles are made of stainless steel 316 L (1.4404 = V4A) with KERDI laminated on the backside.

## Maintenance

KERDI-DRAIN, KERDI-LINE, and SHOWERPROFILE-S/-R require no special maintenance and are resistant to mold and fungi. The drain grates may be removed to clean the drain housing and the drain pipes.

Clean the grates and profiles using common household cleaning agents. Stainless steel exposed to the environment or aggressive substances should be cleaned periodically using a mild household cleaner. Regular cleaning maintains the neat appearance of stainless steel and reduces the risk of corrosion. All cleaning agents must be free of hydrochloric acid, hydrofluoric acid, and chlorides. Stainless steel surfaces develop a sheen when treated with a chrome-polishing agent. Do not use abrasive or alkaline cleaning agents.

## Shower Profiles



14.2 Schluter®-WS/-WSC/-WSL



14.2 Schluter®-WSK/-WSC/-WSL

## Application and Function

**14.2 Schluter®-SHOWERPROFILE-WS/-WSK** system profiles, together with the Schluter®-SHOWERPROFILE-WSL/-WSC inserts, form a splashguard at the entrance of curbless showers.

Schluter®-SHOWERPROFILE-WS is an anodized aluminum support profile that is set in conjunction with the tile using thin-set mortar. It has a 3/4" (19 mm) –wide visible surface and a height of 5/16" (8 mm). Where thicker tiles are used, simply fill the space below the profile with thin-set mortar.

Schluter®-SHOWERPROFILE-WSK is an anodized aluminum support profile that is adhered to the tile surface. It has a 2-1/16" (52 mm) –wide visible surface and a height of 5/16" (8 mm).

The support profiles are combined with either the SHOWERPROFILE-WSL insert or the SHOWERPROFILE-WSC insert.

Schluter®-SHOWERPROFILE-WSL is an upright insert made of transparent polyurethane. The insert is collapsible when stepped on or rolled over with a wheelchair. The insert protrudes 1-5/32" (29 mm) above the profile surface. The SHOWERPROFILE-WSL insert does not comply with the Americans with Disabilities Act (ADA), since it exceeds the allowable height of a vertical transition despite being collapsible. Please check with local code officials for acceptance on projects where ADA guidelines must be observed before installation.

Schluter®-SHOWERPROFILE-WSC is a semi-circular insert made of semi-rigid PVC. The insert creates an inconspicuous transition from the shower area to the adjoining space and a 5/8" (16 mm) –wide visible surface. The insert protrudes 3/64" (1.2 mm) above the profile surface. The SHOWERPROFILE-WSC insert complies with the Americans with Disabilities Act (ADA).

**Material Properties and Areas of Application**  
The SHOWERPROFILE-WS/-WSK support profiles feature an anodized aluminum layer that retains uniform appearance during normal use. The surface, however, is susceptible to scratching and wear and may be damaged by grout or setting material. Cementitious materials, in conjunction with moisture, become alkaline. Since aluminum is sensitive to alkaline substances, exposure to the alkali (depending on the concentration and duration of exposure) may result in corrosion (aluminum hydroxide formation). Therefore, it is important to remove mortar or grout residue immediately from visible surfaces. In addition, ensure the profile is solidly embedded in the setting material and that all cavities are filled to prevent the collection of alkaline water.

The SHOWERPROFILE-WSL insert is made of highly flexible polyurethane.

The SHOWERPROFILE -WSC insert is made of semi-rigid PVC.

The inserts can withstand chemical stresses typically encountered in tiled environments.

## Maintenance

SHOWERPROFILE-WS/-WSK support profiles require no special maintenance or care and are resistant to mold and

fungi. In the case of anodized aluminum, do not use abrasive cleaning agents. The SHOWERPROFILE-WSC/ -WSL inserts are specifically treated to resist the growth of fungi and bacteria and require no special maintenance or care.

## Adhesive/Sealant



### 8.3 Schluter®-KERDI-FIX

Any protrusions through the KERDI membrane can be treated with KERDI-FIX, or equivalent sealant, to ensure a fully waterproof assembly.

## Application and Function

**8.3 Schluter®-KERDI-FIX** is a single-component, waterproof sealing and bonding compound with a silane-modified polymer base, which can be used in various applications. In conjunction with KERDI, KERDI-FIX can be used to waterproof pipe and valve protrusions in the Schluter®-Shower System. KERDI-FIX is used to bond the KERDI membrane to the stainless steel KERDI-DRAIN bonding flange. KERDI-FIX can also be used to bond KERDI to building elements such as bathtubs, window elements and door frames.

## Material Properties and Areas of Application

KERDI-FIX is odorless, weather- and UV-resistant. The product is elastomeric, free of solvents, and provides a strong bond to most materials, including wood, stone, concrete, metal, glass, and many synthetic materials. KERDI-FIX can be painted over with most alkyd resins or dispersion paint types. The suitability of the material must be verified based on the anticipated chemical, mechanical, and/or other stresses. KERDI-FIX is not recommended in or around swimming pool applications.

KERDI-FIX has been evaluated according to the "Standard Method for the Testing and Evaluation of Volatile Organic Chemical Emissions from Indoor Sources Using

## Schluter®-KERDI-FIX Technical Data

|   |  |
|---|--|
| Color   | Grey or bright white   |
| Basic raw material                                    | Silyl-modified polymer (SMP)   |
| Specific weight                                       | Approx. 93.6 lb/ft <sup>3</sup> (1.5 g/ml)   |
| Solvent content                                       | 0%   |
| Isocyanate content                                    | 0%   |
| Dry materials content                                 | Approx. 100%   |
| VOC emissions   | 0.0 mg/m <sup>3</sup>  |
| Shear strength beech wood/beech wood                  | Approx. 435 psi (3 N/mm <sup>2</sup> )   |
| Shear strength aluminum/aluminum                      | Approx. 290 psi (2 N/mm <sup>2</sup> )   |
| Elongation at failure                                 | Approx. 200%   |
| Skinning  | About 10 minutes   |
| Curing  | 1/8" (3 mm) per 24 hours   |
| Permissible total movement                            | About 20%  |
| Processing temperatures                               | Don't install at temperatures below 40 °F (5 °C)<br>-40 °F (-40 °C) to 212 °F (100 °C), temporarily<br>356 °F (180 °C) [max. 30 minutes] |
| Temperature stability                                 |  |
| Moisture resistance                                   | Very good  |
| Frost ability   | Not sensitive to frost   |
| Cartridge volume                                      | 9.81 oz (290 ml)   |
| <b>Estimated coverage</b>                             |  |
| 5" (12.7 cm) connection<br>to fixed building elements | 12' 10" (3.9 m) per cartridge  |
| 1/4" (6 mm) bead                                      | 30' 1" (9.2 m) per cartridge   |

Environmental Chambers, Version 1.1" for California Specification 01350 and found to comply with the VOC requirements. California Specification 01350 is referenced by various green building standards and rating systems.

## Maintenance

### Storage

Unopened packages of KERDI-FIX can be stored in a cool location that is above freezing temperatures for up to 18 months. Once the cartridge has been opened, the material has a limited shelf life.

## System Installation

For complete installation guidelines and warranty criteria for shower applications, please contact Schluter®-Systems at 800-472-4588 (USA) or 800-667-8746 (Canada) to receive a copy of the Schluter®-Shower System Installation Handbook and a step-by-step installation video. To download a PDF version of the Handbook or to view the installation video online, please visit [www.schluter.com](http://www.schluter.com).





## Product Item Numbers

**8.3 Schluter®-KERDI-SHOWER-ST****Prefabricated EPS shower tray**

| Item No.     | Width        | Length       | Perimeter Height | Drain Placement |
|--------------|--------------|--------------|------------------|-----------------|
| ST-97        | 38" – 97 cm  | 38" – 97 cm  | 1-1/8" - 2.9 cm  | Center          |
| ST-122/183   | 48" – 122 cm | 72" – 183 cm | 1-3/8" - 3.5 cm  | Center          |
| ST 122       | 48" – 122 cm | 48" – 122 cm | 1-1/4" - 3.2 cm  | Center          |
| ST-81/152    | 32" – 81 cm  | 60" – 152 cm | 1-3/4" - 4.4 cm  | Center          |
| ST-81/152 BR | 32" – 81 cm  | 60" – 152 cm | 1-1/2" - 3.8 cm  | Off-center*     |
| ST-183       | 72" – 183 cm | 72" – 183 cm | 1-1/2" - 3.8 cm  | Center          |

\*Off-center drain at 10" (25 cm) from end of tray

**8.8 Schluter®-KERDI-SHOWER-LS****Shower tray - wall drain placement**

| Item No.   | Width        | Length       | End Height       |
|------------|--------------|--------------|------------------|
| KSL 1000 S | 39" - 100 cm | 39" - 100 cm | 1-21/32" - 42 mm |
| KSL 1400 S | 55" - 140 cm | 55" - 140 cm | 2" - 50 mm       |

**8.8 Schluter®-KERDI-SHOWER-L****Shower tray - center drain placement**

| Item No. | Width        | Length       | End Height       |
|----------|--------------|--------------|------------------|
| KSL 1000 | 39" - 100 cm | 39" - 100 cm | 1-1/4" – 32 mm   |
| KSL 1400 | 55" - 140 cm | 55" - 140 cm | 1-13/32" – 36 mm |

**8.3 Schluter®-KERDI-SHOWER-SB****Prefabricated EPS bench**

| Item No. | Width        | Depth           | Height      | Shape       |
|----------|--------------|-----------------|-------------|-------------|
| SB 41    | 16" – 41 cm  | 16" – 41 cm     | 20" – 51 cm | Triangular  |
| SB 2981  | 32" – 81 cm  | 11-1/2" – 29 cm | 20" – 51 cm | Rectangular |
| SB 29107 | 42" – 107 cm | 11-1/2" – 29 cm | 20" – 51 cm | Rectangular |
| SB 29122 | 48" – 122 cm | 11-1/2" – 29 cm | 20" – 51 cm | Rectangular |
| SB 4181  | 32" – 81 cm  | 16" – 41 cm     | 20" – 51 cm | Rectangular |
| SB 41122 | 48" – 122 cm | 16" – 41 cm     | 20" – 51 cm | Rectangular |

**8.3 Schluter®-KERDI-SHOWER-SR****Prefabricated EPS ramp**

| Item No. | Width        | Length          | Height          |
|----------|--------------|-----------------|-----------------|
| SR 122   | 48" – 122 cm | 15-7/8" – 40 cm | 1-1/2" – 3.8 cm |

**8.3 Schluter®-KERDI-SHOWER-SC****Prefabricated EPS curb**

| Item No. | Width            | Length       | Height     |
|----------|------------------|--------------|------------|
| SC 122   | 4-1/2" – 11.5 cm | 48" – 122 cm | 6" – 15 cm |

**12.1 Schluter®-KERDI-BOARD-SC****Prefabricated curb**

| Item No.          | Width            | Length       | Height     |
|-------------------|------------------|--------------|------------|
| KBSC 115 150 970  | 4-1/2" – 11.5 cm | 38" – 97 cm  | 6" - 15 cm |
| KBSC 115 150 1220 | 4-1/2" – 11.5 cm | 48" – 122 cm | 6" - 15 cm |

**12.1 Schluter®-KERDI-BOARD-SB****Prefabricated bench**

| Item No.         | Width        | Length          | Height      | Shape       |
|------------------|--------------|-----------------|-------------|-------------|
| KBSB 410 TA      | 16" – 41 cm  | 16" – 41 cm     | 20" - 51 cm | Triangular  |
| KBSB 610 TA      | 24" – 61 cm  | 24" – 61 cm     | 20" - 51 cm | Triangular  |
| KBSB 290 970 RA  | 38" – 97 cm  | 11-1/2" – 29 cm | 20" - 51 cm | Rectangular |
| KBSB 410 1220 RA | 48" – 122 cm | 16" – 41 cm     | 20" - 51 cm | Rectangular |

**8.1 Schluter®-KERDI****Waterproofing membrane**

| Item No.      | Width       | Length        | Area            | Thickness |
|---------------|-------------|---------------|-----------------|-----------|
| KERDI 200/5M  | 3' 3" – 1 m | 16' 5" – 5 m  | 54 ft² – 5 m²   | 8 mil     |
| KERDI 200/7M  | 3' 3" – 1 m | 23' – 7 m     | 75 ft² – 7 m²   | 8 mil     |
| KERDI 200/10M | 3' 3" – 1 m | 33' – 10 m    | 108 ft² – 10 m² | 8 mil     |
| KERDI 200/20M | 3' 3" – 1 m | 65' 7" – 20 m | 215 ft² – 20 m² | 8 mil     |
| KERDI 200     | 3' 3" – 1 m | 98' 5" – 30 m | 323 ft² – 30 m² | 8 mil     |

**8.1 Schluter®-KERDI-DS****Waterproofing membrane**

| Item No. | Width       | Length        | Area            | Thickness |
|----------|-------------|---------------|-----------------|-----------|
| KERDI-DS | 3' 3" – 1 m | 98' 5" – 30 m | 323 ft² – 30 m² | 20 mil    |



**12.1 Schluter®-KERDI-BOARD****Waterproof building panel**

| Item No.        | Width             | Length         | Thickness      |
|-----------------|-------------------|----------------|----------------|
| KB 12 1220 812  | 48" – 122 cm      | 32" – 81 cm    | 1/2" – 12.5 mm |
| KB 5 1220 1625  | 48" – 122 cm      | 64" – 162.5 cm | 3/16" – 5 mm   |
| KB 9 1220 1625  | 48" – 122 cm      | 64" – 162.5 cm | 3/8" – 9 mm    |
| KB 12 1220 1625 | 48" – 122 cm      | 64" – 162.5 cm | 1/2" – 12.5 mm |
| KB 5 1220 2440  | 48" – 122 cm      | 96" – 244 cm   | 3/16" – 5 mm   |
| KB 9 1220 2440  | 48" – 122 cm      | 96" – 244 cm   | 3/8" – 9 mm    |
| KB 12 1220 2440 | 48" – 122 cm      | 96" – 244 cm   | 1/2" – 12.5 mm |
| KB 15 1220 2440 | 48" – 122 cm      | 96" – 244 cm   | 5/8" – 15 mm   |
| KB 19 625 2440  | 24-1/2" – 62.5 cm | 96" – 244 cm   | 3/4" – 19 mm   |
| KB 25 625 2440  | 24-1/2" – 62.5 cm | 96" – 244 cm   | 1" – 25 mm     |
| KB 38 625 2440  | 24-1/2" – 62.5 cm | 96" – 244 cm   | 1-1/2" – 38 mm |
| KB 50 625 2440  | 24-1/2" – 62.5 cm | 96" – 244 cm   | 2" – 50 mm     |
| KB 15 1220 3050 | 48" – 122 cm      | 120" – 305 cm  | 5/8" – 15 mm   |

**12.1 Schluter®-KERDI-BOARD-SN****Shower niche**

| Item No.            | Size                     | Depth          | Shelf |
|---------------------|--------------------------|----------------|-------|
| KB 12 SN 305 152 A  | 12" x 6" – 305 x 152 mm  | 3-1/2" – 89 mm | -     |
| KB 12 SN 305 305 A  | 12" x 12" – 305 x 305 mm | 3-1/2" – 89 mm | -     |
| KB 12 SN 305 508 A1 | 12" x 20" – 305 x 508 mm | 3-1/2" – 89 mm | 1     |
| KB 12 SN 305 711 A1 | 12" x 28" – 305 x 711 mm | 3-1/2" – 89 mm | 1     |

**8.1 Schluter®-KERDI-BAND****Waterproofing strip**

| Item No.         | Width            | Length        | Thickness |
|------------------|------------------|---------------|-----------|
| KEBA 100/125/5M  | 5" – 12.5 cm     | 16' 5" – 5 m  | 4 mil     |
| KEBA 100/125/10M | 5" – 12.5 cm     | 33' – 10 m    | 4 mil     |
| KEBA 100/185/5M  | 7-1/4" – 18.5 cm | 16' 5" – 5 m  | 4 mil     |
| KEBA 100/250/5M  | 10" – 25 cm      | 16' 5" – 5 m  | 4 mil     |
| KEBA 100/125     | 5" – 12.5 cm     | 98' 5" – 30 m | 4 mil     |
| KEBA 100/185     | 7-1/4" – 18.5 cm | 98' 5" – 30 m | 4 mil     |
| KEBA 100/250     | 10" – 25 cm      | 98' 5" – 30 m | 4 mil     |

**8.1 Schluter®-KERDI-FLEX****Waterproofing strip for use above movement joints**

| Item No.    | Width        | Length        | Thickness |
|-------------|--------------|---------------|-----------|
| FLEX 125/5M | 5" – 12.5 cm | 16' 5" – 5 m  | 12 mil    |
| FLEX 250/5M | 10" – 25 cm  | 16' 5" – 5 m  | 12 mil    |
| FLEX 125/30 | 5" – 12.5 cm | 98' 5" – 30 m | 12 mil    |
| FLEX 250/30 | 10" – 25 cm  | 98' 5" – 30 m | 12 mil    |

**8.1 Schluter®-KERDI-KERECK-F****Preformed corner**

| Item No.     | Thickness | Packaging          |
|--------------|-----------|--------------------|
| KERECK/FI 2  | 4 mil     | 2 inside corners   |
| KERECK/FI 10 | 4 mil     | 10 inside corners  |
| KERECK/FA 2  | 4 mil     | 2 outside corners  |
| KERECK/FA 10 | 4 mil     | 10 outside corners |

**8.1 Schluter®-KERDI-KERS-B****Preformed corner**

| Item No.         | Thickness | Description                 | Packaging  |
|------------------|-----------|-----------------------------|--|
| KERECK 135 FI 2  | 4 mil     | Inside corner, 135°         | 2 units  |
| KERECK 135 FI 10 | 4 mil     | Inside corner, 135°         | 10 units   |
| KERSB 135 K LR   | 4 mil     | Bench corners               | 1 right and 1 left   |
| KERSB 135 K 5LR  | 4 mil     | Bench corners               | 5 right and 5 left   |
| KERSB 135 K      | 4 mil     | Bench/ neo-angle corner kit | 1 right and 1 left bench corner, and 2 135° inside corners |



### 8.1 Schluter®-KERDI-KERS

#### Preformed corner

| Item No. | Thickness | Packaging                             |
|----------|-----------|---------------------------------------|
| KERS 20L | 4 mil     | Left inside corner – 3/4" (20 mm)     |
| KERS 28L | 4 mil     | Left inside corner – 1-3/32" (28 mm)  |
| KERS 20R | 4 mil     | Right inside corner – 3/4" (20 mm)    |
| KERS 28R | 4 mil     | Right inside corner – 1-3/32" (28 mm) |



### 8.1 Schluter®-KERDI-SEAL-PS

#### Pipe seal with over-molded rubber gasket

| Item No.    | Pipe nipple opening diam. | Thickness | Packaging |
|-------------|---------------------------|-----------|-----------|
| KMS185/12   | 1/2" – 12.5 cm            | 4 mil     | 1 unit    |
| KMS185/20   | 3/4" – 20 cm              | 4 mil     | 1 unit    |
| KMS10185/12 | 1/2" – 12.5 cm            | 4 mil     | 10 units  |
| KMS10185/20 | 3/4" – 20 cm              | 4 mil     | 10 units  |



### 8.1 Schluter®-KERDI-SEAL-MV

#### Mixing valve seal with over-molded rubber gasket

| Item No.       | Mixing valve opening diam. | Thickness | Packaging |
|----------------|----------------------------|-----------|-----------|
| KMSMV235/114   | 4-1/2" – 114 cm            | 4 mil     | 1 unit    |
| KMSMV10235/114 | 4-1/2" – 114 cm            | 4 mil     | 10 units  |



### 8.1 Schluter®-KERDI-KM

#### Pipe seal

| Item No.  | Dimensions           | Thickness | Packaging |
|-----------|----------------------|-----------|-----------|
| KM5117/22 | 7" x 7" – 17 x 17 cm | 4 mil     | 5 units   |

Hole diameter,  $\phi = 7/8"$  - 22 mm



### 14.2 Schluter®-SHOWERPROFILE-WS

#### Support profile

| Item No.       | Height       | Length            |
|----------------|--------------|-------------------|
| SPWS 19 AE/100 | 5/16" - 8 mm | 39" - 1 m         |
| SPWS 19 AE     | 5/16" - 8 mm | 8' 2-1/2" - 2.5 m |



### 14.2 Schluter®-SHOWERPROFILE-WSK

#### Support profile - retrofit

| Item No.        | Height       | Length            |
|-----------------|--------------|-------------------|
| SPWSK 52 AE/100 | 5/16" - 8 mm | 39" - 1 m         |
| SPWSK 52 AE     | 5/16" - 8 mm | 8' 2-1/2" - 2.5 m |



### 14.2 Schluter®-SHOWERPROFILE-WSC

#### Semi-circular lip insert

| Item No.        | Height       | Length            |
|-----------------|--------------|-------------------|
| SPWSC 16 GS/100 | 5/16" - 8 mm | 39" - 1 m         |
| SPWSC 16 GS     | 5/16" - 8 mm | 8' 2-1/2" - 2.5 m |



### 14.2 Schluter®-SHOWERPROFILE-WSL

#### Straight lip insert

| Item No.       | Height       | Length            |
|----------------|--------------|-------------------|
| SPWSL 30 T/100 | 5/16" - 8 mm | 39" - 1 m         |
| SPWSL 30 T     | 5/16" - 8 mm | 8' 2-1/2" - 2.5 m |

### 14.2 Schluter®-SHOWERPROFILE-WSK-EK

#### End cap

| Item No.       | Height       |
|----------------|--------------|
| EK/SPWSK 52 AE | 5/16" - 8 mm |



### Schluter®-KERDI-TROWEL

#### Trowel

| Item No. | Notch Size             | Packaging |
|----------|------------------------|-----------|
| TRL-KER6 | 1/8" x 1/8" - 3 x 3 mm | 6 units   |
| TRL-KER  | 1/8" x 1/8" - 3 x 3 mm | 1 unit    |

**8.3 Schluter®-KERDI-FIX****Adhesive/sealant**

| Item No.                 | Description                  |
|--------------------------|------------------------------|
| KERDIFIX / <i>color*</i> | Cartridge - 9.81 oz — 290 ml |
| KERDIFIX 100 G           | Tube - 3.38 oz — 100 ml      |

**\*Color Codes**

To complete the item number, add the *color* code (e.g., KERDIFIX/BW).

**8.2 Schluter®-KERDI-DRAIN****4" Grate Options**

| Tileable Covering Support          | Anodized Aluminum   | Stainless Steel  |
|------------------------------------|---|--|
| <br><b>(ECS)</b><br>Patent pending | <br><b>Brushed nickel (ATGB)</b><br><b>Brushed copper (AKGB)</b><br><b>Brushed brass (AMGB)</b> | <br><b>Pure</b><br><b>Curve</b><br><b>Floral</b><br><b>Oil-rubbed bronze (EOB)</b><br><b>Stainless steel (E)</b><br><b>Chrome (EP)</b> |

**6" Grate Options**

| Stainless Steel                 | Stainless Steel Cover for Cleanout Applications |
|---------------------------------|---|
| <br><b>(6E)</b><br><b>(6RE)</b> | <br><b>(6CE)</b><br><b>(6RCE)</b>               |

**Flange Options**

| ABS - 2" or 3" Outlet | PVC - 2" or 3" Outlet | Stainless Steel - 2" or 3" No-hub Outlet | Stainless Steel - 2" Threaded Outlet |
|-----------------------|-----------------------|--|--------------------------------------|
|                       |                       |  |                                      |

**Note:** Product listings and certifications can be referenced on page 23.



## DRAIN KITS - ABS or PVC FLANGE - 2" OR 3" OUTLET

| Schluter®-KERDI-DRAIN - Components - ABS or PVC Flange |                  |   |                        |
|--|------------------|---|------------------------|
|  | Includes         | Description   | Quantity               |
|  | 1 KERDI-DRAIN    | Drain with integrated bonding flange and grate assembly | 1                      |
|  | 2 KERDI-KERECK-F | Preformed waterproofing corners                         | 4 inside and 2 outside |
|  | 3 KERDI-SEAL-PS  | Pipe seal (3/4" - 20 mm)                                | 1                      |
|  | 4 KERDI-SEAL-MV  | Mixing valve seal                                       | 1                      |

| 2" Drain Outlet                         |                           |                           |
|---|---------------------------|---------------------------|
|   | ABS flange                | PVC flange                |
| 4" (100 mm) Square Grate                |                           |                           |
| Tileable covering support (ECS)*        | KD2/ABS/ECS <sup>1</sup>  | KD2/PVC/ECS <sup>1</sup>  |
| Stainless steel (E)                     | KD2/ABS/E <sup>1</sup>    | KD2/PVC/E <sup>1</sup>    |
| Chrome (EP)                             | KD2/ABS/EP <sup>1</sup>   | KD2/PVC/EP <sup>1</sup>   |
| Oil-rubbed bronze stainless steel (EOB) | KD2/ABS/EOB               | KD2/PVC/EOB               |
| Brushed brass anod. alu. (AMGB)         | KD2/ABS/AMGB <sup>1</sup> | KD2/PVC/AMGB <sup>1</sup> |
| Brushed copper anod. alu. (AKGB)        | KD2/ABS/AKGB <sup>1</sup> | KD2/PVC/AKGB <sup>1</sup> |
| Brushed nickel anod. alu. (ATGB)        | KD2/ABS/ATGB <sup>1</sup> | KD2/PVC/ATGB <sup>1</sup> |
| 6" (150 mm) Square or Round Grate       |                           |                           |
| Square grate stainless steel (6E)       | KD2/ABS/6E <sup>1</sup>   | KD2/PVC/6E <sup>1</sup>   |
| Round grate stainless steel (6RE)       | KD2/ABS/6RE <sup>1</sup>  | KD2/PVC/6RE <sup>1</sup>  |

| 3" Drain Outlet                   |                          |                          |
|-----------------------------------|--------------------------|--------------------------|
|                                   | ABS flange               | PVC flange               |
| 6" (150 mm) Square or Round Grate |                          |                          |
| Square grate stainless steel (6E) | KD3/ABS/6E <sup>1</sup>  | KD3/PVC/6E <sup>1</sup>  |
| Round grate stainless steel (6RE) | KD3/ABS/6RE <sup>1</sup> | KD3/PVC/6RE <sup>1</sup> |

<sup>1</sup> Listed by UPC®, CSA, ICC-ES PMG, and NSF

\* Patent pending

| Flange Measurements |   |                         |                         |
|---------------------|---|-------------------------|-------------------------|
| ABS or PVC          |   |                         |                         |
|                     |   | 2" (50 mm) drain outlet | 3" (75 mm) drain outlet |
|                     | A | 11-13/16" - 300 mm      | 11-13/16" - 300 mm      |
|                     | B | 4-17/32" - 115.2 mm     | 4-17/32" - 115.2 mm     |
|                     | C | 2-45/64" - 68.6 mm      | 3-15/16" - 100 mm       |
|                     | D | 2-3/8" - 60.5 mm        | 3-1/2" - 88.8 mm        |
|                     | E | 3-15/16" - 100 mm       | 3-15/16" - 100 mm       |
|                     | F | 1-39/64" - 40.6 mm      | 2" - 50.8 mm            |
|                     | G | 7/8" - 22.5 mm          | 1-1/2" - 38.1 mm        |





## DRAIN KITS - STAINLESS STEEL FLANGE - 2" OR 3" NO-HUB OUTLET

### Schluter®-KERDI-DRAIN - Components - Stainless Steel Flange

|  | Includes         | Description   | Quantity               |
|--|------------------|---|------------------------|
|  | 1 KERDI-DRAIN    | Drain with integrated bonding flange and grate assembly | 1                      |
|  | 2 KERDI-KERECK-F | Preformed waterproofing corners                         | 4 inside and 2 outside |
|  | 3 KERDI-SEAL-PS  | Pipe seal (3/4" - 20 mm)                                | 1                      |
|  | 4 KERDI-SEAL-MV  | Mixing valve seal                                       | 1                      |
|  | 5 KERDI-FIX      | Sealing and bonding compound (66 ml)                    | 1                      |

| 2" No-hub Outlet                        |                         |
|---|-------------------------|
|   | Stainless steel flange  |
| 4" (100 mm) Square Grate                |                         |
| Tileable covering support (ECS)*        | KD2/E/ECS <sup>1</sup>  |
| Stainless steel (E)                     | KD2/E/E <sup>1</sup>    |
| Chrome (EP)                             | KD2/E/EP <sup>1</sup>   |
| Oil-rubbed bronze stainless steel (EOB) | KD2/E/EOB               |
| Brushed brass anod. alu. (AMGB)         | KD2/E/AMGB <sup>1</sup> |
| Brushed copper anod. alu. (AKGB)        | KD2/E/AKGB <sup>1</sup> |
| Brushed nickel anod. alu. (ATGB)        | KD2/E/ATGB <sup>1</sup> |
| 6" (150 mm) Square or Round Grate       |                         |
| Square grate stainless steel (6E)       | KD2/E/6E <sup>1</sup>   |
| Round grate stainless steel (6RE)       | KD2/E/6RE <sup>1</sup>  |

| 3" No-hub Outlet                  |                        |
|-----------------------------------|------------------------|
|                                   | Stainless steel flange |
| 6" (150 mm) Square or Round Grate |                        |
| Square grate stainless steel (6E) | KD3/E/6E <sup>1</sup>  |
| Round grate stainless steel (6RE) | KD3/E/6RE <sup>1</sup> |

<sup>1</sup> Listed by UPC®, CSA, ICC-ES PMG, and NSF

\* Patent pending

| Flange Measurements |   |                          |                          |
|---------------------|---|--------------------------|--------------------------|
| Stainless steel     |   |                          |                          |
|                     |   | 2" (50 mm) no-hub outlet | 3" (75 mm) no-hub outlet |
|                     | A | 9-27/32" - 250 mm        | 9-27/32" - 250 mm        |
|                     | B | 4-1/2" - 115.4 mm        | 4-1/2" - 114 mm          |
|                     | C | 2-13/32" - 61.3 mm       | 3-7/16" - 87.4 mm        |
|                     | D | 2-13/32" - 60.6 mm       | 3-5/16" - 84.2 mm        |
|                     | E | 3-11/32" - 85 mm         | 3-7/16" - 87.4 mm        |
|                     | F | 53/64" - 21 mm           | 1-5/32" - 29.4 mm        |



## GRATE & FLANGE KITS (sold separately)

### Grate Kit - Components

|                      |  | Patent pending         |
|----------------------|--|------------------------|
|                      |  |                        |
|                      |  |                        |
| Includes             | Description  | Quantity               |
| 1a 1b Grate Assembly | a) For stainless steel and aluminum grates<br>b) For tileable covering support | 1                      |
| 2 KERDI-KERECK-F     | Preformed waterproofing corners  | 4 inside and 2 outside |
| 3 KERDI-SEAL-PS      | Pipe seal (3/4" - 20 mm)   | 1                      |
| 4 KERDI-SEAL-MV      | Mixing valve seal  | 1                      |

### Grate Kits

| Finish   | Item No.       |
|--|----------------|
| <b>4" (100 mm) Square Grate</b>  |                |
| Tileable covering support (ECS)*   | KD2/ECS/GR     |
| Stainless steel (E)  | KD2/E/GR       |
| Chrome (EP)  | KD2/EP/GR      |
| Oil-rubbed bronze stainless steel (EOB)  | KD2/EOB/GR     |
| Pure   | KDGIF10EBD8/GR |
| Curve  | KDGIF10EBD6/GR |
| Floral   | KDGIF10EBD5/GR |
| Brushed brass anod. alu. (AMGB)  | KD2/AMGB/GR    |
| Brushed copper anod. alu. (AKGB)   | KD2/AKGB/GR    |
| Brushed nickel anod. alu. (ATGB)   | KD2/ATGB/GR    |
| Stainless steel (E)<br>with stainless steel height adjustment collar and lateral adjustment ring | KD2/E/E/GR     |
| <b>6" (150 mm) Square or Round Grate</b>   |                |
| Square grate stainless steel (6E)  | KD2/6E/GR      |
| Round grate stainless steel (6RE)  | KD2/6RE/GR     |
| <b>6" (150 mm) Square or Round Cover</b>   |                |
| Square cover stainless steel (6CE)   | KD-GR6C-E      |
| Round cover stainless steel (6RCE)   | KD-GR6RC-E     |

**Note:** 6" square and round covers do not include the seals and corners.

### Flange Kit - Components

| Includes                             | Quantity |
|--------------------------------------|----------|
| Drain with integrated bonding flange | 1        |

### Flange Kits

| Material                             | Item No.   |
|--------------------------------------|------------|
| <b>2" (50 mm) Drain Outlet</b>       |            |
| ABS                                  | KD2/ABS/FL |
| PVC                                  | KD2/PVC/FL |
| Stainless Steel with no-hub outlet   | KD2/E/FL   |
| Stainless Steel with threaded outlet | KD2/ETH/FL |
| <b>3" (75 mm) Drain Outlet</b>       |            |
| ABS                                  | KD3/ABS/FL |
| PVC                                  | KD3/PVC/FL |
| Stainless Steel with no-hub outlet   | KD3/E/FL   |



Please note that flanges with 3" outlets are intended for use with 6" grates as these combinations have listings and certifications while flanges with 3" outlet combined with 4" grates do not. Please refer to the Product Listings and Certifications Table on page 23.



## DRAIN ADAPTOR KIT FOR USE WITH RESIDENTIAL CLAMPING RING DRAINS - ABS

### Schluter®-KERDI-DRAIN with residential adaptor ring and ABS flange

|  | Includes         | Description   | Quantity               |
|--|------------------|---|------------------------|
|  | 1 KERDI-DRAIN    | Drain with integrated bonding flange and grate assembly | 1                      |
|  | 2 Adaptor ring*  | For residential clamping ring drains                    | 1                      |
|  | 3 KERDI-KERECK-F | Preformed waterproofing corners                         | 4 inside and 2 outside |
|  | 4 KERDI-SEAL-PS  | Pipe seal (3/4" - 20 mm)                                | 1                      |
|  | 5 KERDI-SEAL-MV  | Mixing valve seal                                       | 1                      |
|  | 6 KERDI-FIX      | Sealing and bonding compound (66 ml)                    | 1                      |

\* © Schluter-Systems L.P., U.S. patent No. D593,641, other patents pending

| Residential Adaptor Kits - ABS Flange   |                    |
|---|--------------------|
|   | ABS bonding flange |
| 4" (100 mm) Square Grate                |                    |
| Stainless steel (E)                     | KDAR/ABS/E         |
| Chrome (EP)                             | KDAR/ABS/EP        |
| Oil-rubbed bronze stainless steel (EOB) | KDAR/ABS/EOB       |
| Brushed brass anod. alu. (AMGB)         | KDAR/ABS/AMGB      |
| Brushed copper anod. alu. (AKGB)        | KDAR/ABS/AKGB      |
| Brushed nickel anod. alu. (ATGB)        | KDAR/ABS/ATGB      |

| Flange and adaptor ring measurements - Residential |   |                    |
|--|---|--------------------|
| ABS  |   |                    |
|  | A | 11-13/16" - 300 mm |
|  | B | 2-13/32" - 60.7 mm |
|  | C | 2.73" - 69.3 mm    |
|  | D | 5-1/4" - 133.4 mm  |
|  | E | 2-29/32" - 74 mm   |
|  | F | 1-1/64" - 25.9 mm  |
|  | G | 2-1/16" - 52.6 mm  |



## DRAIN ADAPTOR KIT FOR USE WITH **COMMERCIAL** CLAMPING RING DRAINS - ABS

### Schluter®-KERDI-DRAIN with commercial adaptor ring and ABS flange

|   | Includes        | Description   | Quantity |
|---|-----------------|---|----------|
|   | 1 KERDI-DRAIN   | Drain with integrated bonding flange and grate assembly | 1        |
|   | 2 Adaptor ring* | For commercial clamping ring drains                     |          |
| 3 | 3 KERDI-FIX     | Sealing and bonding compound (66 ml)                    |          |

\* © Schluter-Systems L.P., U.S. patent No. D593,641, other patents pending

| Commercial Adaptor Kits - ABS Flange     |                             |                             |
|--|-----------------------------|-----------------------------|
|  | Standard ABS bonding flange | Extended ABS bonding flange |
| <b>4" (100 mm) Square Grate</b>          |                             |                             |
| Tileable covering support (ECS)*         | KDA/ABS/ECS                 | KDA/ABSL/ECS                |
| Stainless steel (E)                      | KDA/ABS/E                   | KDA/ABSL/E                  |
| Chrome (EP)                              | KDA/ABS/EP                  | KDA/ABSL/EP                 |
| Oil-rubbed bronze stainless steel (EOB)  | KDA/ABS/EOB                 | KDA/ABSL/EOB                |
| Brushed brass anod. alu. (AMGB)          | KDA/ABS/AMGB                | KDA/ABSL/AMGB               |
| Brushed copper anod. alu. (AKGB)         | KDA/ABS/AKGB                | KDA/ABSL/AKGB               |
| Brushed nickel anod. alu. (ATGB)         | KDA/ABS/ATGB                | KDA/ABSL/ATGB               |
| <b>6" (150 mm) Square or Round Grate</b> |                             |                             |
| Square grate stainless steel (6E)        | KDA/ABS/6E                  | KDA/ABSL/6E                 |
| Round grate stainless steel (6RE)        | KDA/ABS/6RE                 | KDA/ABSL/6RE                |

\* Patent pending

| Flange and adaptor ring measurements - Commercial |   |                     |                     |
|---|---|---------------------|---------------------|
| ABS   |   |                     |                     |
|   |   | Standard            | Extended            |
|   | A | 11-13/16" - 300 mm  | 11-13/16" - 300 mm  |
|   | B | 4-13/32" - 111.8 mm | 4-13/32" - 111.8 mm |
|   | C | 4-11/16" - 118.9 mm | 4-11/16" - 118.9 mm |
|   | D | 7-1/2" - 191 mm     | 7-1/2" - 191 mm     |
|   | E | 5-7/64" - 130 mm    | 5-7/64" - 130 mm    |
|   | F | 1-9/16" - 39.7 mm   | 3-1/16" - 77.8 mm   |
|   | G | 2-9/64" - 54.3 mm   | 3-41/64" - 92.4 mm  |





## DRAIN ADAPTOR KIT FOR USE WITH **COMMERCIAL** CLAMPING RING DRAINS - STAINLESS STEEL

### Schluter®-KERDI-DRAIN with commercial adaptor ring and stainless steel flange

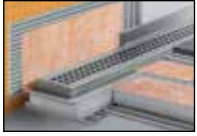
|             | Includes        | Description   | Quantity |
|-------------|-----------------|---|----------|
|             | 1 KERDI-DRAIN   | Drain with integrated bonding flange and grate assembly | 1        |
|             | 2 Adaptor ring* | For commercial clamping ring drains                     |          |
| 3 KERDI-FIX |                 | Sealing and bonding compound (66 ml)                    |          |

\* © Schluter-Systems L.P., U.S. patent No. D593,641, other patents pending

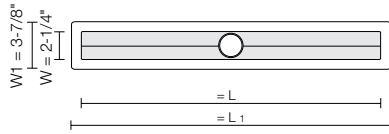
| Commercial Adaptor Kits - Stainless Steel Flange |                                |
|--|--------------------------------|
|  | Stainless steel bonding flange |
| <b>4" (100 mm) Square Grate</b>                  |                                |
| Tileable covering support (ECS)*                 | KDA/E/ECS                      |
| Stainless steel (E)                              | KDA/E/E                        |
| Chrome (EP)                                      | KDA/E/EP                       |
| Oil-rubbed bronze stainless steel (EOB)          | KDA/E/EOB                      |
| Brushed brass anod. alu. (AMGB)                  | KDA/E/AMGB                     |
| Brushed copper anod. alu. (AKGB)                 | KDA/E/AKGB                     |
| Brushed nickel anod. alu. (ATGB)                 | KDA/E/ATGB                     |
| <b>6" (150 mm) Square or Round Grate</b>         |                                |
| Square grate stainless steel (6E)                | KDA/E/6E                       |
| Round grate stainless steel (6RE)                | KDA/E/6RE                      |

\* Patent pending

| Flange and adaptor ring measurements - Commercial |   |                     |
|---|---|---------------------|
| Stainless steel                                   |   |                     |
|   | A | 9-27/32" - 250 mm   |
|   | B | 4-9/16" - 115.7 mm  |
|   | C | 4-11/16" - 118.7 mm |
|   | D | 7-1/2" - 191 mm     |
|   | E | 5-7/64" - 130 mm    |
|   | F | 1-9/16" - 39.7 mm   |
|   | G | 2-3/16" - 56.5 mm   |



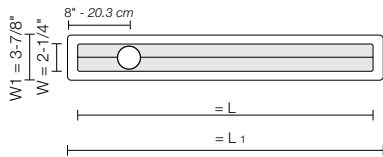
**Note:** There are multiple selections to be made for this product. Start by selecting the appropriate flange length then proceed to grate selection accordingly, keeping in mind there are two frame heights with two grate options (A or B), and a frameless option (D).



### 8.7 Schluter®-KERDI-LINE

Bonding flange - stainless steel - center outlet

| L =<br>in. - cm | L <sub>1</sub> =<br>in. - cm | Item No.     |
|-----------------|------------------------------|--------------|
| 19-11/16" - 50  | 21-11/16" - 55               | KLK 60 E 50  |
| 23-5/8" - 60    | 25-5/8" - 65                 | KLK 60 E 60  |
| 27-9/16" - 70   | 29-9/16" - 75                | KLK 60 E 70  |
| 31-1/2" - 80    | 33-1/2" - 85                 | KLK 60 E 80  |
| 35-7/16" - 90   | 37-7/16" - 95                | KLK 60 E 90  |
| 39-3/8" - 100   | 41-3/8" - 105                | KLK 60 E 100 |
| 43-5/16" - 110  | 45-5/16" - 115               | KLK 60 E 110 |
| 47-1/4" - 120   | 49-1/4" - 125                | KLK 60 E 120 |
| 51-3/16" - 130  | 53-3/16" - 135               | KLK 60 E 130 |
| 55-1/8" - 140   | 57-1/8" - 145                | KLK 60 E 140 |
| 59-1/16" - 150  | 61-1/16" - 155               | KLK 60 E 150 |
| 62-15/16" - 160 | 64-15/16" - 165              | KLK 60 E 160 |
| 66-7/8" - 170   | 68-7/8" - 175                | KLK 60 E 170 |
| 70-13/16" - 180 | 72-13/16" - 185              | KLK 60 E 180 |

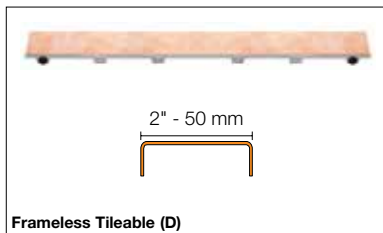
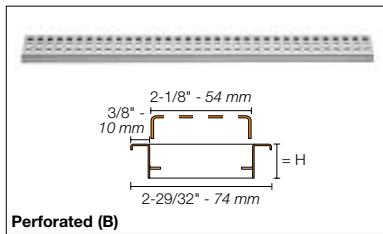
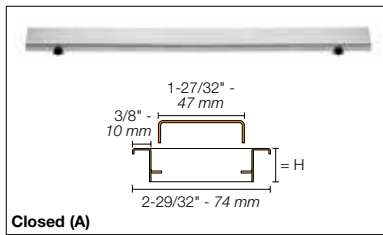


### 8.7 Schluter®-KERDI-LINE

Bonding flange - stainless steel - off-set outlet

| L =<br>in. - cm | L <sub>1</sub> =<br>in. - cm | Item No.      |
|-----------------|------------------------------|---------------|
| 27-9/16" - 70   | 29-9/16" - 75                | KLVO 60 E 70  |
| 31-1/2" - 80    | 33-1/2" - 85                 | KLVO 60 E 80  |
| 35-7/16" - 90   | 37-7/16" - 95                | KLVO 60 E 90  |
| 39-3/8" - 100   | 41-3/8" - 105                | KLVO 60 E 100 |
| 43-5/16" - 110  | 45-5/16" - 115               | KLVO 60 E 110 |
| 47-1/4" - 120   | 49-1/4" - 125                | KLVO 60 E 120 |

**Note :** Please see page 23 for listings and certifications.



## 8.7 Schluter®-KERDI-LINE

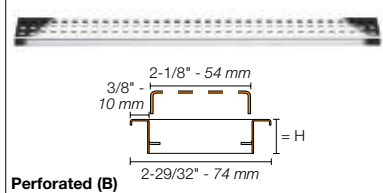
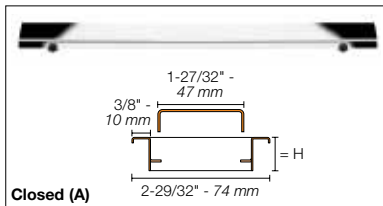
## Grate assemblies - Brushed stainless steel

| Length =<br>in. - cm  | Item No.       |                | Item No.               |                |
|---|----------------|----------------|------------------------|----------------|
|   | Closed (A)     | Perforated (B) | Frameless Tileable (D) |                |
| <p>3/4" - 19 mm frame height for 1/8" to 9/16" - 3 mm to 15 mm -thick coverings</p> |                |                | Center outlet          | Off-set outlet |
| 19-11/16" - 50  | KLAR 19 EB 50  | KLB 19 EB 50   | KLDRE 50               | -              |
| 23-5/8" - 60  | KLAR 19 EB 60  | KLB 19 EB 60   | KLDRE 60               | -              |
| 27-9/16" - 70   | KLAR 19 EB 70  | KLB 19 EB 70   | KLDRE 70               | KLDRO E 70     |
| 31-1/2" - 80  | KLAR 19 EB 80  | KLB 19 EB 80   | KLDRE 80               | KLDRO E 80     |
| 35-7/16" - 90   | KLAR 19 EB 90  | KLB 19 EB 90   | KLDRE 90               | KLDRO E 90     |
| 39-3/8" - 100   | KLAR 19 EB 100 | KLB 19 EB 100  | KLDRE 100              | KLDRO E 100    |
| 43-5/16" - 110  | KLAR 19 EB 110 | KLB 19 EB 110  | KLDRE 110              | KLDRO E 110    |
| 47-1/4" - 120   | KLAR 19 EB 120 | KLB 19 EB 120  | KLDRE 120              | KLDRO E 120    |
| 51-3/16" - 130  | KLAR 19 EB 130 | KLB 19 EB 130  | KLDRE 130              | -              |
| 55-1/8" - 140   | KLAR 19 EB 140 | KLB 19 EB 140  | KLDRE 140              | -              |
| 59-1/16" - 150  | KLAR 19 EB 150 | KLB 19 EB 150  | KLDRE 150              | -              |
| 62-15/16" - 160   | KLAR 19 EB 160 | KLB 19 EB 160  | KLDRE 160              | -              |
| 66-7/8" - 170   | KLAR 19 EB 170 | KLB 19 EB 170  | KLDRE 170              | -              |
| 70-13/16" - 180   | KLAR 19 EB 180 | KLB 19 EB 180  | KLDRE 180              | -              |



|                |                |               |
|----------------|----------------|---------------|
| 19-11/16" - 50 | KLAR 30 EB 50  | KLB 30 EB 50  |
| 23-5/8" - 60   | KLAR 30 EB 60  | KLB 30 EB 60  |
| 27-9/16" - 70  | KLAR 30 EB 70  | KLB 30 EB 70  |
| 31-1/2" - 80   | KLAR 30 EB 80  | KLB 30 EB 80  |
| 35-7/16" - 90  | KLAR 30 EB 90  | KLB 30 EB 90  |
| 39-3/8" - 100  | KLAR 30 EB 100 | KLB 30 EB 100 |
| 43-5/16" - 110 | KLAR 30 EB 110 | KLB 30 EB 110 |
| 47-1/4" - 120  | KLAR 30 EB 120 | KLB 30 EB 120 |

**Note:** The perforated grate (B) is also available with a locking mechanism to prevent removal of the grate, for more information contact customer service at 1-800-472-4588 (US) or 1-800-667-8746 (CANADA).



## 8.7 Schluter®-KERDI-LINE

## Grate assemblies - Chrome

| Length =<br>in. - cm | Item No.       |                |
|----------------------|----------------|----------------|
|                      | Closed (A)     | Perforated (B) |
| 19-11/16" - 50       | KLAR 19 EP 50  | KLB 19 EP 50   |
| 23-5/8" - 60         | KLAR 19 EP 60  | KLB 19 EP 60   |
| 27-9/16" - 70        | KLAR 19 EP 70  | KLB 19 EP 70   |
| 31-1/2" - 80         | KLAR 19 EP 80  | KLB 19 EP 80   |
| 35-7/16" - 90        | KLAR 19 EP 90  | KLB 19 EP 90   |
| 39-3/8" - 100        | KLAR 19 EP 100 | KLB 19 EP 100  |
| 43-5/16" - 110       | KLAR 19 EP 110 | KLB 19 EP 110  |
| 47-1/4" - 120        | KLAR 19 EP 120 | KLB 19 EP 120  |



## 8.7 Schluter®-KERDI-LINE

### Grate assemblies - Stainless steel

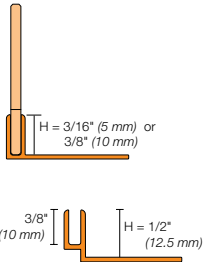
| Length =<br>in. - cm   | Item No.        |                 |                 |
|--|-----------------|-----------------|-----------------|
|  | Pure            | Curve           | Floral          |
| 29/32" - 23 mm frame height for 1/4" - 11/16" (6 - 18 mm) -thick coverings |                 |                 |                 |
| 19-11/16 - 50  | KLIFE 23 EB 50  | KLIFF 23 EB 50  | KLIFG 23 EB 50  |
| 23-5/8 - 60  | KLIFE 23 EB 60  | KLIFF 23 EB 60  | KLIFG 23 EB 60  |
| 27-9/16 - 70   | KLIFE 23 EB 70  | KLIFF 23 EB 70  | KLIFG 23 EB 70  |
| 31-1/2 - 80  | KLIFE 23 EB 80  | KLIFF 23 EB 80  | KLIFG 23 EB 80  |
| 35-7/16 - 90   | KLIFE 23 EB 90  | KLIFF 23 EB 90  | KLIFG 23 EB 90  |
| 39-3/8 - 100   | KLIFE 23 EB 100 | KLIFF 23 EB 100 | KLIFG 23 EB 100 |
| 43-5/16 - 110  | KLIFE 23 EB 110 | KLIFF 23 EB 110 | KLIFG 23 EB 110 |
| 47-1/4 - 120   | KLIFE 23 EB 120 | KLIFF 23 EB 120 | KLIFG 23 EB 120 |



## 14.1 Schluter®-SHOWERPROFILE-SA

### Two-part tapered edging profile

| Item No.            | H = in. - mm | H <sub>1</sub> = in. - mm | H <sub>2</sub> = in. - mm |
|---------------------|--------------|---------------------------|---------------------------|
| L = 47-1/4" - 1.2 m |              |                           |                           |
| SPSA 50 EB/120      | 3/16 - 5     | 1/4 - 6                   | 1-3/16 - 30               |
| L = 63" - 1.6 m     |              |                           |                           |
| SPSA 50 EB/160      | 3/16 - 5     | 1/4 - 6                   | 1-1/2 - 38                |
| L = 78-3/4" - 2 m   |              |                           |                           |
| SPSA 50 EB/200      | 3/16 - 5     | 1/4 - 6                   | 1-13/16 - 46              |

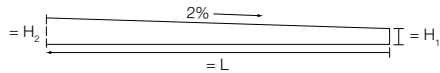


## 14.1 Schluter®-SHOWERPROFILE-SB

### Two-part tapered edging profile

| Item No.            | H = in. - mm | H <sub>1</sub> = in. - mm | H <sub>2</sub> = in. - mm |
|---------------------|--------------|---------------------------|---------------------------|
| L = 47-1/4" - 1.2 m |              |                           |                           |
| SPSB 100 EB/120     | 3/8 - 10     | 3/8 - 10                  | 1-11/32 - 34              |
| SPSB 125 EB/120     | 1/2 - 12.5   | 3/8 - 10                  | 1-11/32 - 34              |
| L = 63" - 1.6 m     |              |                           |                           |
| SPSB 100 EB/160     | 3/8 - 10     | 3/8 - 10                  | 1-21/32 - 42              |
| SPSB 125 EB/160     | 1/2 - 12.5   | 3/8 - 10                  | 1-21/32 - 42              |
| L = 78-3/4" - 2 m   |              |                           |                           |
| SPSB 100 EB/200     | 3/8 - 10     | 3/8 - 10                  | 2 - 50                    |
| SPSB 125 EB/200     | 1/2 - 12.5   | 3/8 - 10                  | 2 - 50                    |

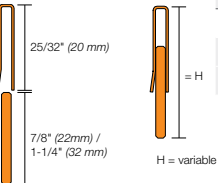
**Note:** Other sizes available. Contact Customer Service for price and availability.



## 14.1 Schluter®-SHOWERPROFILE-R

### Two-part wall transition profile

| Item No.        | Height                          |
|-----------------|---------------------------------|
| L = 39" - 1 m   |                                 |
| SPRA 23 EB/100  | 29/32" - 1-3/8" (23 - 35 mm)    |
| SPRA 33 EB/100  | 1-5/16" - 1-25/32" (33 - 45 mm) |
| L = 55" - 1.4 m |                                 |
| SPRA 23 EB/140  | 29/32" - 1-3/8" (23 - 35 mm)    |
| SPRA 33 EB/140  | 1-5/16" - 1-25/32" (33 - 45 mm) |

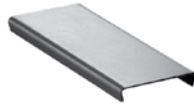
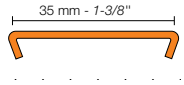


**Note:** When the SHOWERPROFILE-S/-R is not used with the Schluter®-Shower System the profile is covered under the Schluter®-Systems Wall and Countertop Profiles 5-Year Limited Warranty.

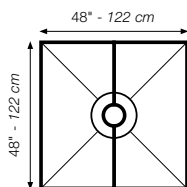


**14.1 Schluter®-KERDI-LINE-FC****Cover plate**

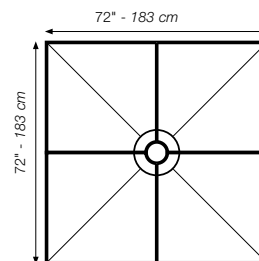
| Item No.    | Width          | Finish                  |
|-------------|----------------|-------------------------|
| V / KLEB 35 | 1-3/8" - 35 mm | Brushed stainless steel |
| V / KLEP 35 | 1-3/8" - 35 mm | Chrome                  |

**Schluter®-KERDI-SHOWER-KIT**

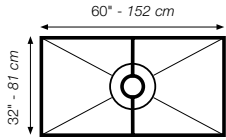
| Includes          | Description  | Quantity               |           |           |           |           |
|-------------------|--|------------------------|-----------|-----------|-----------|-----------|
|                   |  | 48" x 48"              | 72" x 72" | 32" x 60" | 38" x 38" | 48" x 72" |
| 1 KERDI-SHOWER-ST | Shower Tray  | 1                      | 1         | 1         | 1         | 1         |
| 2 KERDI-SHOWER-SC | Shower Curb 48" x 6" x 4-1/2"                                | 1                      | 2         | 2         | 1         | 2         |
| 3 KERDI 5 M       | Waterproofing membrane 3' 3" x 16' 5" = <b>54 ft²</b>        |                        |           |           |           | 1         |
| KERDI 10 M        | Waterproofing membrane 3' 3" x 33' = <b>108 ft²</b>          |                        |           | 1         | 1         | 1         |
| KERDI 12 M        | Waterproofing membrane 3' 3" x 39' 4" = <b>128 ft²</b>       | 1                      |           |           |           |           |
| KERDI 20 M        | Waterproofing membrane 3' 3" x 65' 7" = <b>215 ft²</b>       |                        | 1         |           |           |           |
| 4 KERDI-BAND      | Waterproofing strip 5" x 33'                                 | 1                      | 2         | 1         | 1         | 2         |
| 5 KERDI-DRAIN     | Drain, with integrated bonding flange with 2" (50 mm) outlet | 1                      | 1         | 1         | 1         | 1         |
| 6 KERDI-KERECK-F  | Preformed waterproofing corners                              | 4 inside and 2 outside |           |           |           |           |
| 7 KERDI-SEAL-PS   | Pipe seal (3/4" - 20 mm)                                     |                        | 1         |           | 1         | 1         |
| 8 KERDI-SEAL-MV   | Mixing valve seal  |                        | 1         |           | 1         | 1         |

**48" x 48" (122 x 122 cm) Kit**

| Item No.      | Drain Material | Grate finish    |
|---------------|----------------|-----------------|
| KK 122 ABS E  | ABS            | Stainless steel |
| KK 122 ABS EP | ABS            | Chrome          |
| KK 122 PVC E  | PVC            | Stainless steel |
| KK 122 PVC EP | PVC            | Chrome          |

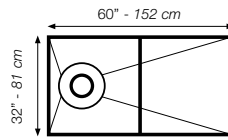
**72" x 72" (183 x 183 cm) Kit**

| Item No.      | Drain Material | Grate finish    |
|---------------|----------------|-----------------|
| KK 183 ABS E  | ABS            | Stainless steel |
| KK 183 ABS EP | ABS            | Chrome          |
| KK 183 PVC E  | PVC            | Stainless steel |
| KK 183 PVC EP | PVC            | Chrome          |



**32" x 60" (81 x 152 cm) Kit**

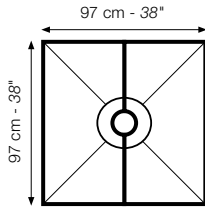
| Item No.        | Drain Material | Grate finish    |
|-----------------|----------------|-----------------|
| KK 81152 ABS E  | ABS            | Stainless steel |
| KK 81152 ABS EP | ABS            | Chrome          |
| KK 81152 PVC E  | PVC            | Stainless steel |
| KK 81152 PVC EP | PVC            | Chrome          |



**Note:** Tray features off-center drain placement: 10" (25.4 cm) o.c. from end of tray.

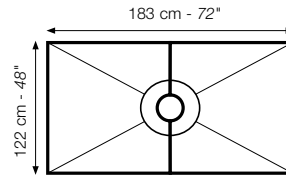
**32" x 60" (81 x 152 cm) Kit with off-center drain placement**

| Item No.         | Drain Material | Grate finish    |
|------------------|----------------|-----------------|
| KKB 81152 ABS E  | ABS            | Stainless steel |
| KKB 81152 ABS EP | ABS            | Chrome          |
| KKB 81152 PVC E  | PVC            | Stainless steel |
| KKB 81152 PVC EP | PVC            | Chrome          |



**38" x 38" (97 x 97 cm) Kit**

| Item No.     | Drain Material | Grate finish    |
|--------------|----------------|-----------------|
| KK 97 ABS E  | ABS            | Stainless steel |
| KK 97 ABS EP | ABS            | Chrome          |
| KK 97 PVC E  | PVC            | Stainless steel |
| KK 97 PVC EP | PVC            | Chrome          |



**48" x 72" (122 x 183 cm) Kit**

| Item No.         | Drain Material | Grate finish    |
|------------------|----------------|-----------------|
| KK 122183 ABS E  | ABS            | Stainless steel |
| KK 122183 ABS EP | ABS            | Chrome          |
| KK 122183 PVC E  | PVC            | Stainless steel |
| KK 122183 PVC EP | PVC            | Chrome          |



**Schluter®-KERDI-SHOWER-KIT WITHOUT THE DRAIN**

| Includes          | Description  | Quantity  |           |           |           |           |
|-------------------|--|-----------|-----------|-----------|-----------|-----------|
|                   |  | 48" x 48" | 72" x 72" | 32" x 60" | 38" x 38" | 48" x 72" |
| 1 KERDI-SHOWER-ST | Shower tray  | 1         | 1         | 1         | 1         | 1         |
| 2 KERDI-SHOWER-SC | Shower curb 48" x 6" x 4-1/2"                          | 1         | 2         | 2         | 1         | 2         |
| 3 KERDI 5 M       | Waterproofing membrane 3' 3" x 16' 5" = <b>54 ft²</b>  |           |           |           |           | 1         |
| KERDI 10 M        | Waterproofing membrane 3' 3" x 33' = <b>108 ft²</b>    |           |           | 1         | 1         | 1         |
| KERDI 12 M        | Waterproofing membrane 3' 3" x 39' 4" = <b>128 ft²</b> | 1         |           |           |           |           |
| KERDI 20 M        | Waterproofing membrane 3' 3" x 65' 7" = <b>215 ft²</b> |           | 1         |           |           |           |
| 4 KERDI-BAND      | Waterproofing strip 5" x 33'                           | 1         | 2         | 1         | 1         | 2         |

| Item No. | Tray size                  |
|----------|----------------------------|
| KK122    | 48" x 48"                  |
| KK183    | 72" x 72"                  |
| KK81152  | 32" x 60"                  |
| KKB81152 | 32" x 60" off-center drain |
| KK97     | 38" x 38"                  |
| KK122183 | 48" x 72"                  |

**Schluter®-KERDI-TUBKIT**

| Item No. | Includes        | Description   | Quantity |
|----------|-----------------|---|----------|
| KKB7     | ① KERDI 7M      | Waterproofing membrane 3' 3" x 23' = <b>75 ft<sup>2</sup></b> | 1        |
|          | ② KERDI-BAND    | Waterproofing strip 5" x 16' 5"                               | 1        |
|          | ③ KERDI-SEAL-PS | Pipe seal 3/4"  | 1        |
|          | ④ KERDI-SEAL-MV | Mixing valve seal 4-1/2"                                      | 1        |
|          | ⑤ KERDI-FIX     | Sealing and bonding compound, bright white                    | 1        |

**Product Listings and Certifications Table****Schluter®-KERDI-DRAIN**

| Bonding Flange 2" (50 mm) Outlet | Grate - 4" (100 mm) |    |     |      |      |      |      |         |        |       | Grate - 6" (150 mm) |     |     |      |
|----------------------------------|---------------------|----|-----|------|------|------|------|---------|--------|-------|---------------------|-----|-----|------|
|                                  | E                   | EP | EOB | AMGB | AKGB | ATGB | ECS* | Floral* | Curve* | Pure* | 6E                  | 6RE | 6CE | 6RCE |
| ABS / PVC                        | 1                   | 1  | -   | 1    | 1    | 1    | 1    | 3       | 3      | 3     | 1                   | 1   | 2   | 2    |
| Stainless steel                  | 1                   | 1  | -   | 1    | 1    | 1    | 1    | 3       | 3      | 3     | 1                   | 1   | 2   | 2    |
| Bonding Flange 3" (75 mm) Outlet | Grate - 6" (150 mm) |    |     |      |      |      |      |         |        |       |                     |     |     |      |
|                                  | 6E                  |    |     |      | 6RE  |      |      |         | 6CE    |       | 6RCE                |     |     |      |
| ABS / PVC                        | 1                   |    |     |      | 1    |      |      |         | 2      |       | 2                   |     |     |      |
| Stainless steel                  | 1                   |    |     |      | 1    |      |      |         | 2      |       | 2                   |     |     |      |

**Schluter®-KERDI-LINE**

| Bonding Flange   | Grate |   |   |             |            |           |
|--|-------|---|---|-------------|------------|-----------|
|  | A     | B | D | Floral (E)* | Curve (F)* | Pure (G)* |
| Center outlet - 19-11/16" - 47-1/4" (50 cm - 120 cm)   | 1     | 1 | 1 | 3           | 3          | 3         |
| Center outlet - 51-3/16" - 70-13/16" (130 cm - 180 cm) | 1     | 1 | 1 | 3           | 3          | 3         |
| Off-set outlet - 27-9/16" - 47-1/4" (70 cm - 120 cm)   | 1     | 1 | 1 | 3           | 3          | 3         |

Various configurations of KERDI-DRAIN and KERDI-LINE are listed by ICC-ES (Report No. PMG-1204), UPC®, CSA, and NSF as shown in the table above.

**1** - Listed by ICC-ES (Report No. PMG-1204), UPC®, CSA, and NSF.

**2** - Listed by CSA

**3** - CSA, UPC, and ICC-ES listings in progress, please check [www.schluter.com](http://www.schluter.com) for the most up-to-date information.

\* Patent pending

For copies of these documents, please contact Schluter®-Systems at 800-472-4588 (USA) or 800-667-8746 (Canada) or by email at [info@schluter.com](mailto:info@schluter.com). Links to the documents can also be accessed at [www.schluter.com](http://www.schluter.com).

## Schluter®-Shower System 10-Year Limited Warranty

**COVERAGE AND CONDITIONS:** Subject to the conditions and limitations as stated hereinafter, **Schluter-Systems\*** warrants that the **Schluter®-Shower System** (the "Products")\*\* will meet all composition and performance criteria for a period of ten (10) years from the date of purchase only when the Products are used and installed in accordance with the terms and conditions of the Schluter®-Shower System Installation Handbook and industry standard guidelines that are not in conflict with the Handbook in effect at the time of installation. Further, efflorescence is considered to be a natural occurrence with cementitious materials and is therefore not considered to be a defective condition and is not covered by this warranty. It is the responsibility of the owner/builder/installer to ensure the suitability of all building materials and all associated building materials for the owner's intended use. It is recommended that the owner consult with an experienced and professional installer.

**RESOLUTION:** If the Products fail to meet this warranty, then the owner's exclusive remedy and the sole obligation of Schluter-Systems, at its election, shall be to a) reinstall or replace the failed portion of the tile assembly or b) pay an amount not to exceed the original square foot cost of the installation of the tile assembly verified to be defective. Tile assembly is defined to include all Schluter®-KERDI products, non-reusable tile surfaces, and the appropriate setting and grouting materials. Further, due to conditions beyond the control of Schluter-Systems (e.g., color and shade availability, discontinuation, normal wear and tear), Schluter-Systems cannot guarantee or warrant an exact match to the specific tile, stone, or other covering materials used in the installation. In such events, substantially similar materials may be substituted.

**DISCLAIMER:** THERE ARE NO WARRANTIES BEYOND THIS EXPRESSED WARRANTY AS STATED ABOVE. ALL OTHER WARRANTIES, REPRESENTATIONS OR CONDITIONS, EXPRESSED OR IMPLIED, ARE DISCLAIMED AND EXCLUDED, INCLUDING WARRANTIES, REPRESENTATIONS OR CONDITIONS OF **MERCHANTABILITY** OR FITNESS FOR A PARTICULAR PURPOSE ARISING BY STATUTE OR OTHERWISE BY LAW OR FROM A COURSE OF DEALING OR USAGE OF TRADE. SCHLUTER-SYSTEMS EXCLUDES AND IN NO EVENT SHALL HAVE ANY LIABILITY FOR LOST PROFITS OR ANY OTHER INDIRECT, SPECIAL, INCIDENTAL, PUNITIVE, EXEMPLARY, OR CONSEQUENTIAL DAMAGES, ARISING OUT OF OR OTHERWISE CONNECTED TO FAILURE OF THE PRODUCTS, NOR MISUSE OF THE PRODUCTS OR FAILURE TO PROPERLY MAINTAIN THE SHOWER OR BATHTUB SURROUND. REGARDLESS OF ANY STRICT LIABILITY, ACTIVE OR PASSIVE NEGLIGENCE OF SCHLUTER-SYSTEMS, AND REGARDLESS OF THE LEGAL THEORY (CONTRACT OR TORT OR EXTRA-CONTRACTUAL OR OTHER), NOR FROM ACTS OF WAR, TERRORISM, FAULTY AND NEGLIGENT PENETRATION OF THE SYSTEM, FIRES, EXPLOSIONS, ACTS OF GOD, INTENTIONAL ACTS OF DESTRUCTION OR ANY LOSSES DUE TO STRUCTURAL FAILURE OR OTHER CAUSES UNRELATED TO THE PRODUCTS OR DELAYS, OR ANY OTHER INCIDENTAL OR CONSEQUENTIAL DAMAGES. THIS WARRANTY IS GIVEN IN LIEU OF ANY OTHER WARRANTY EXPRESSED OR IMPLIED. THE REMEDIES CONTAINED HEREIN ARE THE ONLY REMEDIES AVAILABLE FOR BREACH OF THIS WARRANTY. THIS LIMITED WARRANTY GIVES YOU SPECIFIC LEGAL RIGHTS; SOME STATES AND PROVINCES DO NOT ALLOW DISCLAIMERS OR OTHER RESTRICTIONS OF IMPLIED WARRANTIES, SO SOME OF THE ABOVE DISCLAIMERS MAY NOT APPLY TO YOU. IF THE PRODUCTS ARE USED IN CONJUNCTION WITH OTHER SCHLUTER PRODUCTS, A DIFFERENT SCHLUTER WARRANTY MAY APPLY. PLEASE SEE [https://www.schluter.com/schluter-us/en\\_US/warranty](https://www.schluter.com/schluter-us/en_US/warranty) FOR MORE INFORMATION. FOR THE MOST CURRENT INFORMATION AND MATERIALS REGARDING SCHLUTER SYSTEMS WARRANTIES AND PROGRAMS, PLEASE VISIT <https://www.schluter.com/DOWNLOADFILES>.

**TRANSFERABILITY:** This Limited Warranty extends ONLY to the original end user (defined as original intended owner and user of the property/unit in which the installation is incorporated - herein referred to as "Owner") and is not transferable or assignable, unless approved in writing by the Technical Director or an Officer of Schluter-Systems or otherwise prohibited by specific state or provincial law.

**MODIFICATIONS TO WARRANTY:** No changes or modification of any terms or conditions of this warranty are allowed unless authorized by written agreement and signed by the Technical Director or an Officer of Schluter-Systems.

**EFFECTIVE DATE:** This warranty shall supersede and replace any and all prior oral or written warranties, agreements, or other such representations made by or on behalf of Schluter-Systems relative to the Products or the application of the Products and shall apply to any installation occurring on or after January 1, 2013.

**CLAIMS ON THIS LIMITED WARRANTY:** To make a claim under this Limited Warranty, the Owner must provide Schluter-Systems with written notice within 30 days of any alleged defect in the Products covered by this Limited Warranty, together with date and proof of purchase of the Products, proof of the costs of the original installation and name and address of all installers, failing which this Limited Warranty shall be of no legal effect. Schluter-Systems reserves the right at its election and as a condition of this Limited Warranty to inspect the alleged failed and defective condition.

All U.S. Claims shall be sent to:

Schluter Systems L.P.  
Attn: Warranty Claims Dept.  
194 Pleasant Ridge Road  
Plattsburgh, NY 12901-5841

All Canadian Claims shall be sent to:

Schluter Systems (Canada), Inc.  
Attn: Warranty Claims Dept.  
21100 chemin Ste-Marie  
Ste-Anne-de-Bellevue, QC H9X 3Y8

\*For the purpose of this warranty **Schluter Systems, L.P.** shall provide the warranty for all products for end users located in the United States, and **Schluter Systems (Canada) Inc.** shall provide the warranty for all products for end users located in Canada. This warranty is limited to sales of the Products made in and intended for use in the United States and Canada.

\*\***Schluter®-Shower System (the "Products"):** The Products are defined to include all Schluter®-KERDI products referred to in the Handbook and used in the integrated Schluter®-Shower System.



Schluter Systems L.P. • 194 Pleasant Ridge Road, Plattsburgh, NY 12901-5841 • Tel.: 800-472-4588 • Fax: 800-477-9783  
Schluter Systems (Canada) Inc. • 21100 chemin Ste-Marie, Ste-Anne-de-Bellevue, QC H9X 3Y8 • Tel.: 800-667-8746 • Fax: 877-667-2410

[www.schluter.com](http://www.schluter.com)

This technical data sheet is subject to change without notice. Please visit [www.schluter.com](http://www.schluter.com) for the latest version.