

808-A01-025

JOINT WIDTH		MOVEMENT ±			
		HORIZONTAL		VERTICAL	
US	mm	US	mm	US	mm
1"	25	1/2"	13	1/2"	13"

FINISH: MILL

PROJECT:

CUSTOMER:

LOCATION:

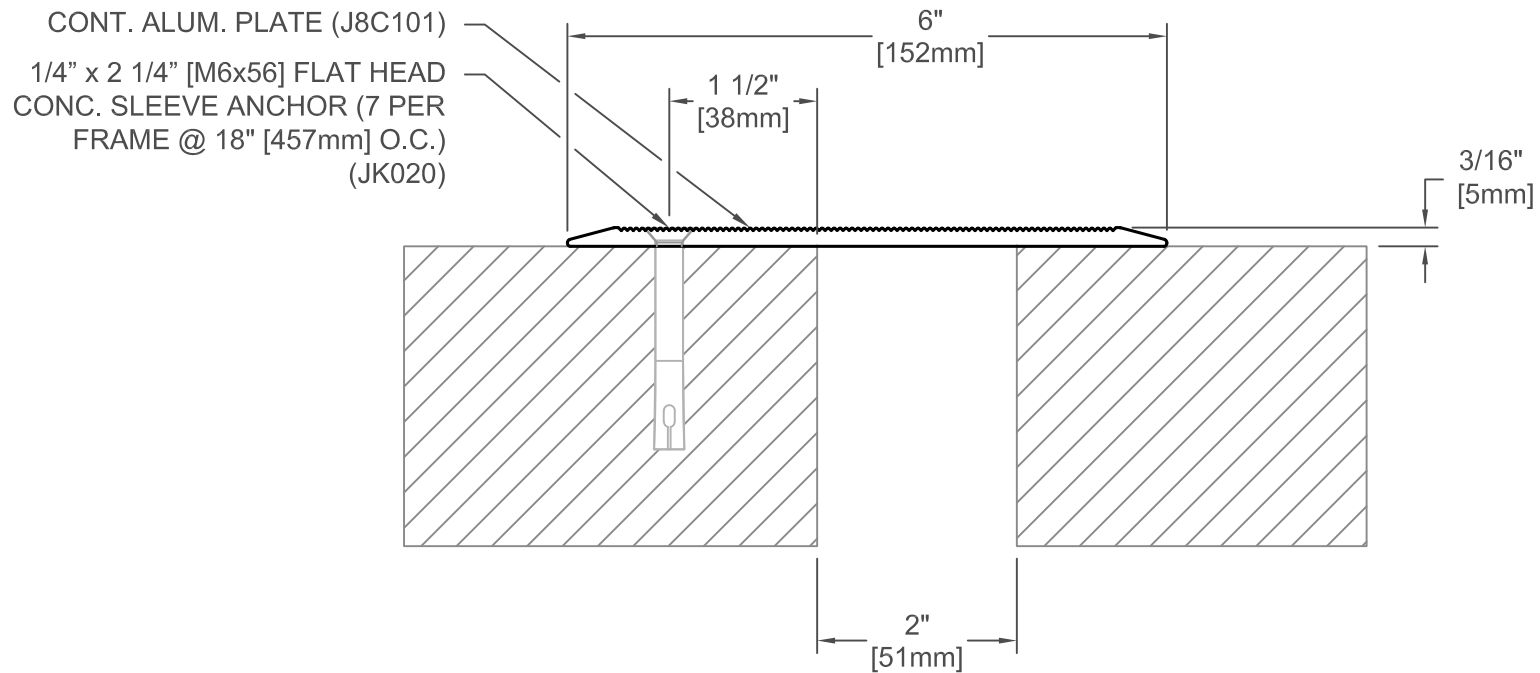
APPLICATION-
FLOOR/FLOOR CONDITION
STANDARD COVER PLATE

DATE: 2-14-08

SCALE: 1:2

DOC: CADJM.126/R2

inpro.
For More Information Visit: Inprocorp.com



808-A01-050

JOINT WIDTH		MOVEMENT ±			
		HORIZONTAL		VERTICAL	
US	mm	US	mm	US	mm
2"	51	1"	25	1"	25

FINISH: MILL

PROJECT:

CUSTOMER:

LOCATION:

APPLICATION-
FLOOR/FLOOR CONDITION
STANDARD COVER PLATE

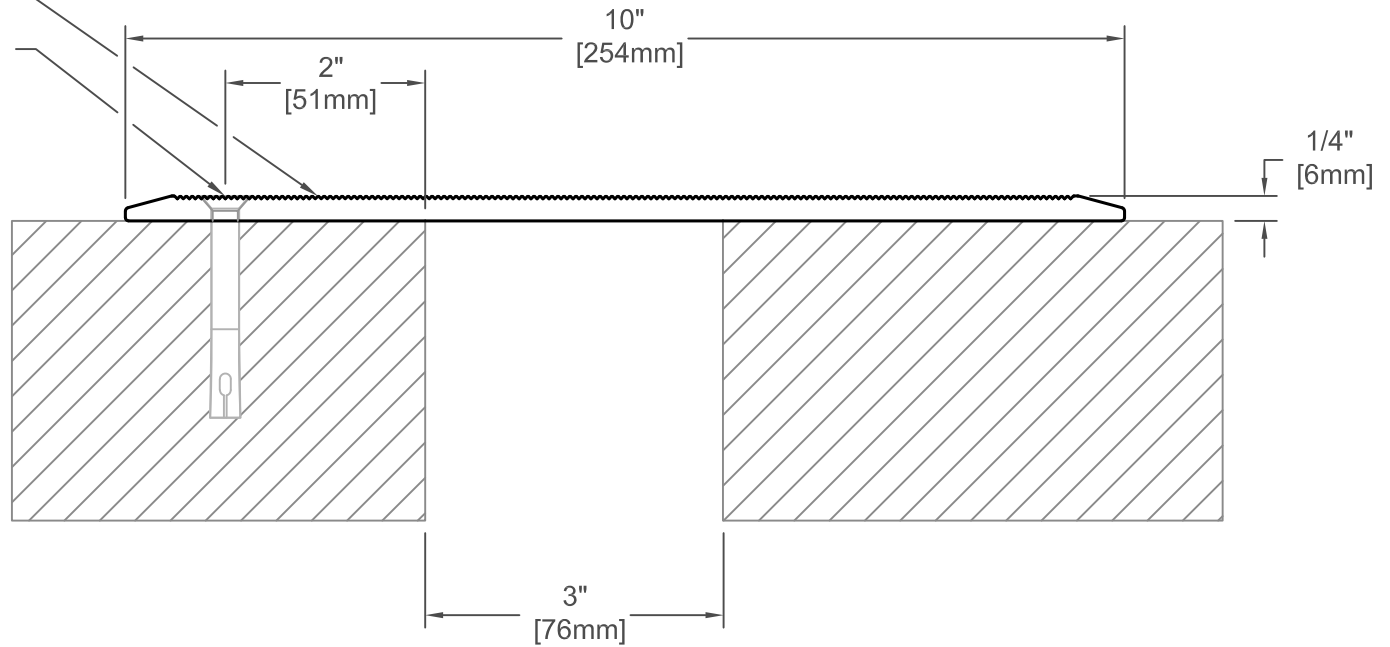
DATE: 2-14-08

SCALE: 1:2

DOC: CADJM.126/R2

inpro.
For More Information Visit: Inprocorp.com

CONT. ALUM. PLATE (J8C102)
 1/4" x 2 1/4" [M6x56] FLAT
 HEAD CONC. SLEEVE
 ANCHOR (7 PER FRAME @
 18" [457mm] O.C.) (JK020)



808-A01-075

JOINT WIDTH		MOVEMENT ±			
		HORIZONTAL		VERTICAL	
US	mm	US	mm	US	mm
3"	76	1 1/2"	38	1 1/2"	38

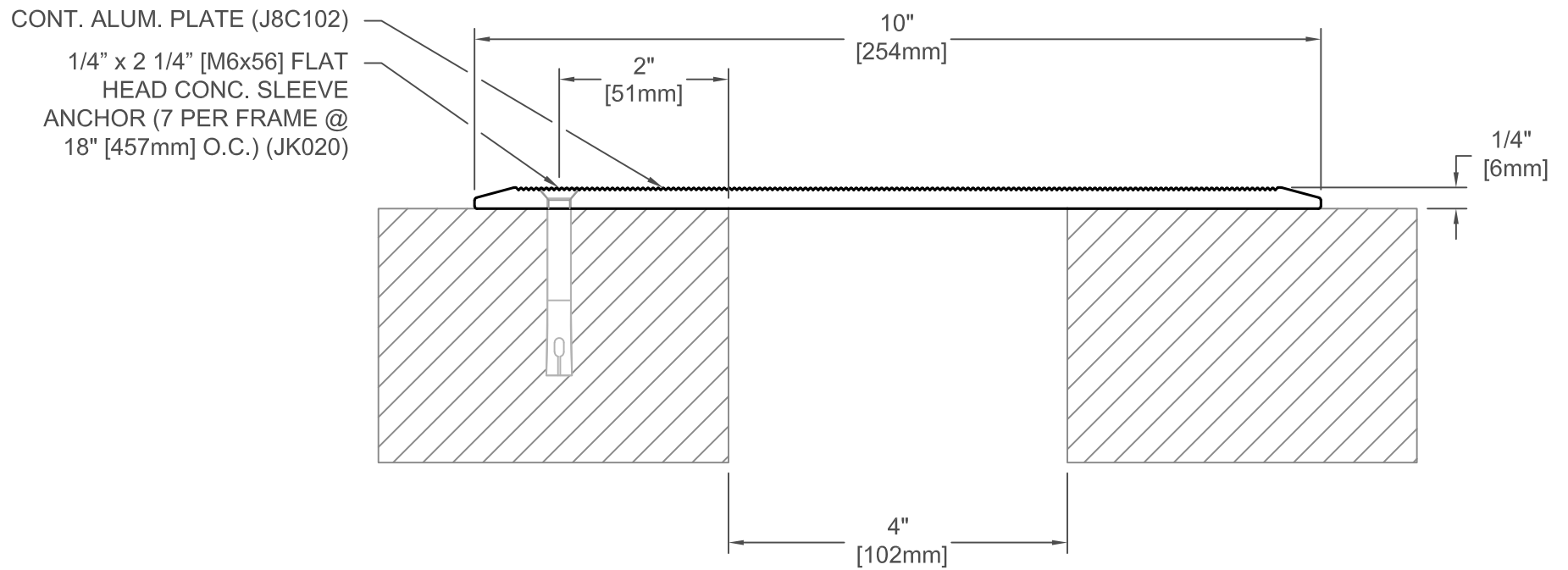
FINISH: MILL
PROJECT:
CUSTOMER:
LOCATION:

APPLICATION-
 FLOOR/FLOOR CONDITION
 STANDARD COVER PLATE

DATE:	2-14-08
SCALE:	1:2
DOC:	CADJM.126/R2



For More Information Visit: Inprocorp.com



808-A01-100

JOINT WIDTH		MOVEMENT ±			
		HORIZONTAL		VERTICAL	
US	mm	US	mm	US	mm
4"	102	2"	51	2"	51

FINISH: MILL
PROJECT:
CUSTOMER:
LOCATION:

APPLICATION-
FLOOR/FLOOR CONDITION
STANDARD COVER PLATE

DATE:	2-14-08
SCALE:	1:2
DOC:	CADJM.126/R2



For More Information Visit: Inprocorp.com