

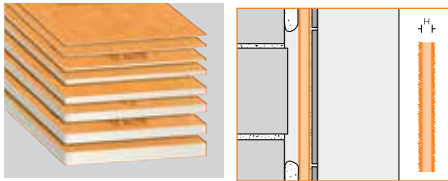
SCHLUTER®-KERDI-BOARD



SUBSTRATE

SUBSTRATE, BUILDING PANEL, BONDED WATERPROOFING

Application and Function



12.1 Schluter®-KERDI-BOARD

12.1 Schluter®-KERDI-BOARD is a multifunctional tile substrate and building panel, which can also be used for creating bonded waterproofing assemblies with tile coverings.

It consists of an extruded polystyrene foam panel, with a special reinforcement material on both sides and fleece webbing for effective anchoring in thin-set mortar.

With the available panel thicknesses of 3/16", 3/8", 1/2", 5/8", 3/4", 1", 1-1/2", and 2" (5, 9, 12.5, 15, 19, 25, 38, and 50 mm), KERDI-BOARD covers a broad range of application areas for creating flat, level, plumb, square, and dimensionally stable substrates for the installation of ceramic and natural stone tiles.

With suitable preparation of the abutting seams and joint areas, the panel may be used for bonded waterproofing assemblies. KERDI-BOARD is suitable for: creating tile substrates on masonry walls, wood or metal framing, and other finished wall surfaces; creating straight or curved partition walls; creating straight or curved bathtub and shower surrounds; concealing pipes and columns; as well as creating bathtub platforms, vanities, storage shelves, countertops, and various other bathroom structures.

The boards are simply cut to size with a utility knife. The gridlines, which are printed on the surface, are helpful for neat and quick cuts and installation.

KERDI-BOARD can be fully adhered or spot-bonded in existing or masonry wall areas with thin-set mortar. If necessary, the material



may be secured with additional wall anchors. In the case of stud framing, KERDI-BOARD is attached with screws and washers from the matching hardware system.

Tiles can be installed directly over KERDI-BOARD using the thin-set method.

L-shaped and U-shaped KERDI-BOARD panels are available for creating pipe and column coverings, and grooved panels are available for creating curved elements. Schluter-Systems also offers profiles and attachment hardware for wall connections and finishing edges, as well as matching wall anchors and screws.

12.1 Schluter®-KERDI-BOARD-SB/-SC are prefabricated substrates, made of Schluter®-KERDI-BOARD, which integrate with the Schluter®-Shower System. The substrates are waterproof and ready for tile, leaving only sealing of joints and corners to complete waterproofing. The KERDI-BOARD-SB shower bench is available in



triangular and rectangular configurations in the followings sizes (width x depth x height). The triangular benches are 16" x 16" x 20" (41 x 41 x 51 cm) and 24" x 24" x 20" (61 x 61 x 51 cm). Rectangular benches are 38" x 16" x 20" (97 x 41 x 51 cm) and 48" x 11-1/2" x 20" (122 x 29 x 51 cm). The KERDI-BOARD-SC shower curb can be used in conjunction with any shower base. Curb dimensions are 38" x 6" x 4-1/2" (97 x 15 x 11.5 cm) and 48" x 6" x 4-1/2" (122 x 15 x 11.5 cm).

Schluter®-KERDI-BOARD-SN is a prefabricated shower niche made of KERDI-BOARD that can be installed in both Schluter®-KERDI and KERDI-BOARD wall assemblies. The shower niche features a 1/2" (12.5 mm) -thick by 2" (50 mm) -wide integrated bonding flange and is available in 12" x 6" (30 cm x 15 cm), 12" x 12" (30 cm x 30 cm), 12" x 20" (30 cm x 51 cm), and 12" x 28" (30 cm or 71 cm) sizes.



Material Properties and Areas of Application

KERDI-BOARD is made from extruded polystyrene foam, with a cement-free reinforcement layer laminated to both sides and an anchoring fleece webbing. The surface of the board has gridlines consisting of 3/8" x 3/8" (10 mm x 10 mm) squares printed on one side.

KERDI-BOARD is waterproof and vapor-retardant and can withstand all chemical stresses that typically occur in conjunction with ceramic tile coverings. KERDI-BOARD may be used in bonded waterproofing assemblies where required.

KERDI-BOARD is completely flat and will not warp, even with one-sided exposure to temperature and moisture fluctuations. It will not rot or decay.

KERDI-BOARD can be used in a multitude of interior applications. In special cases, the suitability of the material must be verified based on the anticipated chemical and mechanical stresses. The information provided below is intended as general guidelines.

Structures on which KERDI-BOARD is to be installed must be stable and meet any other project-specific requirements.

Select a suitable material thickness if using KERDI-BOARD for the construction of free-standing partition walls, shelving, or similar structures, and use reinforcement profiles as necessary. Arrange supports made of KERDI-BOARD at regular intervals consistent with conventional building practices.

Select the material thickness and installation method depending on the evenness of the substrate. KERDI-BOARD can be spot-bonded to walls to correct substrate variations or fully embedded in thin-set mortar where walls are sufficiently even and plumb. KERDI-BOARD should be stored flat. In case of outdoor storage, protect the material from direct sunlight and weather exposure.

Installation

Fully embedded KERDI-BOARD

Any board thickness suitable

1. Remove all surface contaminants from the substrate that may weaken the bond.
2. Apply thin-set mortar to the substrate and/or onto KERDI-BOARD with a notched trowel. The mortar must bond to the substrate and mechanically anchor the fleece on the KERDI-BOARD surface.

12.1 Schluter®-KERDI-BOARD

Property	Method	Value
Water vapor permeance	ASTM E96 ¹	0.36 perms - 1/2" (12.5 mm)
Thermal resistance (R-value)	ASTM C518	R 9.1 - 2" (50 mm) R 2.2 - 1/2" (12.5 mm) R 0.9 - 3/16" (5 mm)
Service temperature range		-58°F to 158°F (-50°C to 70°C)
Flame spread/smoke developed	ASTM E84 CAN/ULC S102.2	Pass ² Pass ³
Thermal barrier evaluation	NFPA 286	Pass ^{2,4}

¹Using the desiccant method at 100°F (38°C) and 90% RH

²Per International Building Code Requirements, contact Schluter®-Systems for more information

³Specific building categories, contact Schluter®-Systems for more information

⁴Porcelain tile used as thermal barrier over 1/2" (12.5 mm) -thick KERDI-BOARD on wood framing

3. Apply the panels to the wall and firmly press them in place to ensure full coverage.
4. Tightly abut the individual panels and align them appropriately.
5. The tiles can be installed immediately using Schluter SET™, Schluter ALL-SET™, Schluter FAST-SET™ or unmodified thin-set mortar. Choose a notched trowel to match the tile format, and back-butter the tiles, if necessary, to attain full coverage.

Note: If the bond between the thin-set mortar and substrate is questionable, additional mechanical attachment with the KERDI-BOARD-ZSD anchors or KERDI-BOARD-ZT washers and corresponding screws is required. Fasteners are installed after the thin-set mortar has hardened.

Note: See section "Waterproofing" on the use of KERDI-BOARD in bonded waterproofing assemblies.

Spot-bonded KERDI-BOARD

Minimum board thickness = 3/8" (9 mm)

1. Remove all surface contaminants from the substrate that may weaken the bond.
2. Place spots of thin-set mortar on the KERDI-BOARD panel or substrate in intervals of approx. 12" (30 cm). The mortar must bond to the substrate and mechanically anchor the fleece on the KERDI-BOARD surface.
3. Apply the panels to the wall, firmly press them in place, and align them with a straight-edge or level.
4. The tiles can be installed immediately using Schluter SET™, Schluter ALL-SET™, Schluter FAST-SET™ or unmodified thin-set mortar. Choose a notched trowel to match the tile format, and back-butter the tiles, if necessary, to attain full coverage.

Note: If the bond between the thin-set mortar and substrate is questionable, additional mechanical attachment with the KERDI-BOARD-ZSD anchors or KERDI-BOARD-ZT washers and corresponding screws is required. Fastener locations must coincide with mortar spots. This may be ensured by making holes in the KERDI-BOARD at the desired fastener locations prior to applying mortar spots. Fasteners are installed after the thin-set mortar has hardened.

Note: See section "Waterproofing" on the use of KERDI-BOARD in bonded waterproofing assemblies.

Use of KERDI-BOARD on wood or metal framing

Minimum board thickness = 1/2" (12.5 mm) for studs spaced at 16" (40.6 cm) o.c.; 3/4" (19 mm) for studs spaced at 24" (61.0 cm) o.c.

1. KERDI-BOARD can be mounted vertically or horizontally on wood or metal framing with appropriate screws (i.e., coarse thread wood screw for wood studs and self-tapping for metal studs) and corresponding KERDI-BOARD-ZT washers.
2. The selected screws must be of sufficient length to reach a depth of at least 3/4" (20 mm) in wood studs and at least 3/8" (10 mm) in metal studs. The maximum allowable on-center fastener spacing is 12" (30 cm) for walls and 6" (15 cm) for ceilings. Screws may be placed between adjacent panels such that the washers fasten both panel edges.
3. The tiles can be installed immediately using Schluter SET™, Schluter ALL-SET™, Schluter FAST-SET™ or unmodified thin-set mortar. Choose a notched trowel to match the tile format, and back-butter the tiles, if necessary, to attain full coverage.



Note: See section “Waterproofing” on the use of KERDI-BOARD in bonded waterproofing assemblies.

Use of KERDI-BOARD in non-bearing partition wall systems

Minimum board thickness = 2" (50 mm)

1. Schluter®-KERDI-BOARD is adhered to the permanent wall in such a way as to provide lateral stability. This can be achieved by sandwiching the panel between adjacent KERDI-BOARD panels, fixed building elements, etc. As an alternative, the KERDI-BOARD-ZW angle profile or KERDI-BOARD-ZB U-shaped profile may be screw-mounted to the wall prior to partition installation.
2. Open-ended partition walls can be further stabilized with the corresponding KERDI-BOARD-ZA/-ZB U-shaped profiles. If you plan to screw finishing hardware (e.g., shower door hinges) to the U-shaped profile, adhere the matching KERDI-BOARD-ZFP flat plastic profile to the back of the U-shaped profile to improve the fastening of the screws. U-shaped profiles may also be used for connections in the floor and ceiling areas.
3. If multiple KERDI-BOARD panels are required to create the desired partition, the panels must be arranged horizontally with the joints sealed using thin-set mortar or Schluter®-KERDI-FIX adhesive. The KERDI-BOARD-ZW angle profile or KERDI-BOARD-ZB U-shaped profile may be included in the joints for improved stability.
4. Such partition walls are not to be considered load-bearing structural walls. As a rule, use the 2" (50 mm) panels for these elements. Panels from a thickness of 3/4" (19 mm) may be used for building shelving. Again, this must be evaluated in accordance with the building specifications.
5. The tiles can be installed using Schluter SET™, Schluter ALL-SET™, Schluter FAST-SET™ or unmodified thin-set mortar once the bonding materials used to construct the partition have cured sufficiently to stabilize the assembly. Choose a notched trowel to match the tile format, and back-butter the tiles, if necessary, to attain full coverage.

Note: See section “Waterproofing” on the use of KERDI-BOARD in bonded waterproofing assemblies.

Countertops made of KERDI-BOARD

Minimum board thickness = 1-1/2" (38 mm)

1. KERDI-BOARD is adhered directly to base cabinets using the Schluter®-KERDI-FIX adhesive. All joints of KERDI-BOARD panels must be sealed with KERDI-FIX or thin-set mortar.
2. The backsplash may consist of KERDI-BOARD or other appropriate tile substrate. Seal the countertop/backsplash transition with Schluter®-KERDI-BAND using Schluter SET™, Schluter ALL-SET™, Schluter FAST-SET™ or unmodified thin-set mortar.
3. Countertop edges may be finished with the KERDI-BOARD-ZC brushed stainless steel U-profile and corresponding Schluter®-QUADEC or Schluter®-RONDEC, RONDEC-CT, or RONDEC-STEP profiles.
 - a. Apply KERDI-FIX to the inside vertical surface of the KERDI-BOARD-ZC profile and slide the profile over the edge of the KERDI-BOARD, pushing it tightly against the panel. The corresponding QUADEC or RONDEC profiles are installed with Schluter SET™, Schluter ALL-SET™, Schluter FAST-SET™ or unmodified thin-set mortar in conjunction with the tile.
 - b. RONDEC-CT and RONDEC-STEP profiles are installed with Schluter SET™, Schluter ALL-SET™, Schluter FAST-SET™ or unmodified thin-set mortar in conjunction with the tile.
4. The countertop/backsplash transition may be finished with one of the Schluter®-DILEX cove-shaped profiles. Various materials and finishes are available to match the sink rail profiles above.
5. Sinks may be mounted on top of the tile or tiled-under using RONDEC or QUADEC profiles and corresponding sink corners.
6. The tiles can be installed immediately using Schluter SET™, Schluter ALL-SET™, Schluter FAST-SET™ or unmodified thin-set mortar. Choose a notched trowel to match the tile format, and back-butter the tiles, if necessary, to attain full coverage.

Note: Please refer to the Walls and Countertops Profiles data sheet for additional information on profiles, including installation instructions.

A bearing plate must be provided for fastening fixtures (e.g., faucet, soap dispenser, etc.) in tiled-under sink

applications to distribute the pressure of the fixture hardware on the underside of the assembly. This may be performed by routing a section from the top of the KERDI-BOARD in the area where the fixtures are to be placed. Apply a corresponding piece of ceramic tile with thin-set mortar in the resulting space flush with the surface of the KERDI-BOARD. In general, it is recommended that the tile be at least 5/16" (8 mm) -thick and extend approximately 1-1/2" (38 mm) beyond the fixture hardware on all sides. Once the countertop is tiled and grouted, holes may be drilled through the assembly to fit the fixture-mounting studs. Additional material may be removed from the underside of the KERDI-BOARD to allow installation of the fixture hardware.

Pipe and column coverings made of KERDI-BOARD

1. The KERDI-BOARD-E/-U L-shaped and U-shaped panels allow for quick and easy covering of pipes and columns.
2. The panels feature V-shaped grooves. They are supplied flat, which makes them easy to cut to the required size.
3. Apply thin-set mortar, KERDI-FIX adhesive, or the KERDI-BOARD-ZDK double-sided adhesive tape to the V-shaped grooves. Fold the panels prior to installation.
4. Adhere the edges of the L-shaped or U-shaped panels to the existing walls using either thin-set mortar or KERDI-FIX. If required, mount the KERDI-BOARD-ZW angle profile on the wall area first for reinforcement.
5. The tiles can be installed immediately using Schluter SET™, Schluter ALL-SET™, Schluter FAST-SET™ or unmodified thin-set mortar. Choose a notched trowel to match the tile format, and back-butter the tiles, if necessary, to attain full coverage.

Note: As an alternative, you can also cut a single U-shaped panel into two L-shaped panels with shorter legs.

Note: See section “Waterproofing” on the use of KERDI-BOARD in bonded waterproofing assemblies.

Curved wall areas made of KERDI-BOARD

1. The Schluter®-KERDI-BOARD-V panels feature grooves to allow for quick and easy creation of curved elements.



2. First, cut the panels to the required size. If a larger expanse of panels is required, several panels can be connected along the edges with thin-set mortar, Schluter®-KERDI-FIX adhesive, or the KERDI-BOARD-ZDK double-sided adhesive tape.
3. If the grooved surface points toward the inside, it is recommended that the grooves be filled with thin-set mortar prior to panel installation.
4. Outward-facing grooves should be filled with thin-set mortar prior to or during the tile installation.
5. The tiles can be installed using Schluter SET™, Schluter ALL-SET™, Schluter FAST-SET™ or unmodified thin-set mortar once the bonding materials used to construct the element have cured sufficiently to stabilize the assembly. Choose a notched trowel to match the tile format, and back-butter the tiles, if necessary, to attain full coverage

Note: See section “Waterproofing” on the use of KERDI-BOARD in bonded waterproofing assemblies.

KERDI-BOARD-SB bench

1. Apply Schluter SET™, Schluter ALL-SET™, Schluter FAST-SET™ or unmodified thin-set mortar to the floor and walls using a 1/4" x 3/8" (6 mm x 10 mm) square- or U-notched trowel.
2. Press the bench firmly into place and check the underside and backsides to ensure that full coverage and support are achieved. Verify that the slope on the surface of the bench is directed toward the shower base.
3. Install KERDI-BAND and KERDI-KERECK and KERDI-KERS-B (for triangular bench) to cover all seams and corners, ensuring a minimum 2" (50 mm) overlap, and work the membrane into the mortar to achieve full coverage and remove air pockets.

KERDI-BOARD-SC curb

1. Apply Schluter SET™, Schluter ALL-SET™, Schluter FAST-SET™ or unmodified thin-set mortar to the floor and to the edge of the shower base and walls using a 1/4" x 3/8" (6 mm x 10 mm) square- or U-notched trowel.
2. Press the curb or ramp firmly into place. Check the underside of the curb or ramp to ensure that full coverage and

support is achieved.

3. Seal the curb to the base and walls using KERDI-KERECK and KERDI-BAND.

KERDI-BOARD-SN shower niche

1. Determine desired location and trace around the outside of the Schluter®-KERDI-BOARD-SN flange, making sure the lines are level and plumb. Cut and remove the wallboard such that the niche will be supported on both sides by the studs or other wall framing.
2. Insert the niche and fasten to the studs. When installing adjacent to KERDI-BOARD, use wood or metal screws and KERDI-BOARD-ZT washers, placing the fasteners along the seam between the KERDI-BOARD and the niche. When installing adjacent to gypsum board or other tile backers (e.g., CBU), use wood or metal screws only (i.e., no washers), placing fasteners approximately 1/4" (6 mm) from the edges of the niche. Fasten all corners and limit fastener spacing to 12" (305 mm) o.c.
3. Connections between the niche and walls are made using KERDI-BAND or KERDI. When installed adjacent to KERDI-BOARD, seams are most easily constructed using KERDI-BAND. When installed adjacent to gypsum board or other tile backers (e.g., CBU), seams are most easily constructed by continuous application of the KERDI membrane. The membrane is applied up to the niche opening. Once the niche is sealed to the wall assembly, tile can be installed immediately using Schluter SET™, Schluter ALL-SET™, Schluter FAST-SET™ or unmodified thin-set mortar.
4. When using the prefabricated shelf, determine the desired height of the shelf and mark with a level line. Set tile using Schluter SET™, Schluter ALL-SET™, Schluter FAST-SET™ or unmodified thin-set mortar up to that line on the back and sides of the niche. Butter the sides and back of the shelf with Schluter SET™, Schluter ALL-SET™, Schluter FAST-SET™ or unmodified thin-set mortar and solidly embed it in the niche, resting on the previously installed tile. The shelf may be raised at the back to create a slope, or the tile may be set on a slope during installation, to prevent water from pooling in the finished application. Continue setting tile using Schluter SET™, Schluter ALL-SET™, Schluter FAST-SET™ or unmodified thin-set mortar.

Waterproofing with KERDI-BOARD

Where waterproofing is desired, the joints and corners of KERDI-BOARD in the area must be sealed with KERDI-BAND using Schluter SET™, Schluter ALL-SET™, Schluter FAST-SET™ or unmodified thin-set mortar. The KERDI-BAND must overlap panel joints by at least 2" (50 mm).

KERDI-BAND is also suitable for sealing connections to fixed building elements such as door and window frames. Where these surfaces will not accept a bond to Schluter SET™, Schluter ALL-SET™, Schluter FAST-SET™ or unmodified thin-set mortar, use KERDI-FIX to bond KERDI-BAND.

Separate KERDI-BOARD above the existing movement joints and structural joints and cover the joints with Schluter®-KERDI-FLEX using Schluter SET™, Schluter ALL-SET™, Schluter FAST-SET™ or unmodified thin-set mortar, ensuring a minimum 2" (50 mm) overlap.

Fastener penetrations may be sealed with KERDI-BAND using Schluter SET™, Schluter ALL-SET™, Schluter FAST-SET™ or unmodified thin-set mortar. Please refer to the Schluter®-Shower System Installation Handbook for guidelines on waterproofing showers, steam showers, and tub surrounds.

Note: Certain glass tiles may not be compatible with bonded waterproofing applications and/or may require special setting materials. Consult glass tile manufacturer and Schluter-Systems for more information.

Certain moisture-sensitive stones, e.g., green marble, or resin-backed tiles may not be appropriate for use in wet areas or may require special setting materials. Consult stone supplier and Schluter-Systems for more information.

If installing bathroom fixtures such as grab bars in showers, wall-mounted toilets, or other heavy objects, the fixtures must be anchored in the structure or solid blocking behind KERDI-BOARD.

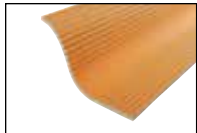
Note: Reinforcement may be required behind the entire footprint of the object. For example, place solid blocking behind the base of a wall-mounted toilet installed over KERDI-BOARD on stud framing.



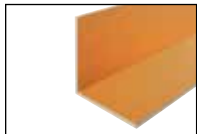
Product Item Numbers



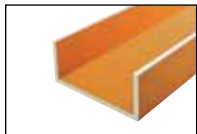
Schluter®-KERDI-BOARD			Waterproof building panel
Item No.	Width	Length	Thickness
Panel dimension: 48" x 32" – 122 cm x 81 cm			
KB 12 1220 812	48" – 122 cm	32" – 81 cm	1/2" – 12.5 mm
Panel dimension: 48" x 64" – 122 cm x 162.5 cm			
KB 5 1220 1625	48" – 122 cm	64" – 162.5 cm	3/16" – 5 mm
KB 9 1220 1625	48" – 122 cm	64" – 162.5 cm	3/8" – 9 mm
KB 12 1220 1625	48" – 122 cm	64" – 162.5 cm	1/2" – 12.5 mm
Panel dimension: 48" x 96" – 122 cm x 244 cm			
KB 5 1220 2440	48" – 122 cm	96" – 244 cm	3/16" – 5 mm
KB 9 1220 2440	48" – 122 cm	96" – 244 cm	3/8" – 9 mm
KB 12 1220 2440	48" – 122 cm	96" – 244 cm	1/2" – 12.5 mm
KB 15 1220 2440	48" – 122 cm	96" – 244 cm	5/8" – 15 mm
Panel dimension: 24-1/2" x 96" – 62.5 cm x 244 cm			
KB 19 625 2440	24-1/2" – 62.5 cm	96" – 244 cm	3/4" – 19 mm
KB 25 625 2440	24-1/2" – 62.5 cm	96" – 244 cm	1" – 25 mm
KB 38 625 2440	24-1/2" – 62.5 cm	96" – 244 cm	1-1/2" – 38 mm
KB 50 625 2440	24-1/2" – 62.5 cm	96" – 244 cm	2" – 50 mm
Panel dimension: 48" x 120" – 122 cm x 305 cm			
KB 15 1220 3050	48" – 122 cm	120" – 305 cm	5/8" – 15 mm



Schluter®-KERDI-BOARD-V			Waterproof building panel
Item No.	Width	Length	Thickness
KB 19 625 2440 V	24-1/2" – 62.5 cm	96" – 244 cm	3/4" – 19 mm
KB 25 625 2440 V	24-1/2" – 62.5 cm	96" – 244 cm	1" – 25 mm
KB 38 625 2440 V	24-1/2" – 62.5 cm	96" – 244 cm	1-1/2" – 38 mm
KB 50 625 2440 V	24-1/2" – 62.5 cm	96" – 244 cm	2" – 50 mm



Schluter®-KERDI-BOARD-E			Waterproof building panel
Item No.	Width	Length	Thickness
KB 19 625 2440 E	24-1/2" – 62.5 cm	96" – 244 cm	3/4" – 19 mm
KB 25 625 2440 E	24-1/2" – 62.5 cm	96" – 244 cm	1" – 25 mm



Schluter®-KERDI-BOARD-U			Waterproof building panel
Item No.	Width	Length	Thickness
KB 19 625 2440 U20	8-1/4" x 7-7/8" x 8-1/4" = 24-1/2" – 21 x 20 x 21 cm = 62 cm	96" – 244 cm	3/4" – 19 mm
KB 19 625 2440 U30	6-5/16" x 11-13/16" x 6-5/16" = 24-1/2" – 16 x 30 x 16 cm = 62 cm	96" – 244 cm	3/4" – 19 mm



Schluter®-KERDI-BOARD-SN			Shower niche
Item No.	Size	Depth	Shelf
KB 12 SN 305 152 A	12" x 6" – 305 mm x 152 mm	3-1/2" – 89 mm	-
KB 12 SN 305 305 A	12" x 12" – 305 mm x 305 mm	3-1/2" – 89 mm	-
KB 12 SN 305 508 A1	12" x 20" – 305 mm x 508 mm	3-1/2" – 89 mm	1
KB 12 SN 305 711 A1	12" x 28" – 305 mm x 711 mm	3-1/2" – 89 mm	1



12.1 Schluter®-KERDI-BOARD-SC			Prefabricated curb
Item No.	Width	Length	Height
KBSC 115 150 970	4-1/2" – 11.5 cm	48" – 122 cm	6" - 15 cm
KBSC 115 150 1220	4-1/2" – 11.5 cm	38" – 97 cm	6" - 15 cm



12.1 Schluter®-KERDI-BOARD-SB			Prefabricated bench	
Item No.	Width	Length	Height	Shape
KBSB 410 TA	16" – 41 cm	16" – 41 cm	20" - 51 cm	Triangular
KBSB 610 TA	24" – 61 cm	24" – 61 cm	20" - 51 cm	Triangular
KBSB 290 970 RA	38" – 97 cm	11-1/2" – 29 cm	20" - 51 cm	Rectangular
KBSB 410 1220 RA	48" – 122 cm	16" – 41 cm	20" - 51 cm	Rectangular



Schluter®-KERDI-BOARD-ZW

Item No.	Description
Length supplied: 6" – 15 cm	
KB ZW 30 E/15	Stainless steel angle profile
Length supplied: 8' 2-1/2" – 2.50 m	
KB ZW 30 E	Stainless steel angle profile



Schluter®-KERDI-BOARD-ZC

Item No.	Description	Size
Length supplied: 8' 2-1/2" – 2.50 m		
KB ZC 38 EB	U-shaped brushed stainless steel profile with 1 perforated anchoring leg	1-1/2" – 38 mm
KB ZC 50 EB	U-shaped brushed stainless steel profile with 1 perforated anchoring leg	2" – 50 mm



Schluter®-KERDI-BOARD-ZC/E

Item No.	Description	Size
E/KB ZC 38 EB	Brushed stainless steel outside corner piece for ZC	1-1/2" – 38 mm
E/KB ZC 50 EB	Brushed stainless steel outside corner piece for ZC	2" – 50 mm



Schluter®-KERDI-BOARD-ZA

Item No.	Description	Size
Length supplied: 8' 2-1/2" – 2.50 m		
KB ZA 19 EB	U-shaped brushed stainless steel profile with 2 perforated anchoring legs	3/4" – 19 mm
KB ZA 25 EB	U-shaped brushed stainless steel profile with 2 perforated anchoring legs	1" – 25 mm
KB ZA 38 EB	U-shaped brushed stainless steel profile with 2 perforated anchoring legs	1-1/2" – 38 mm
KB ZA 50 EB	U-shaped brushed stainless steel profile with 2 perforated anchoring legs	2" – 50 mm



Schluter®-KERDI-BOARD-ZA/E

Item No.	Description	Size
E/KB ZA 38 EB	Brushed stainless steel outside corner piece for ZA	1-1/2" – 38 mm
E/KB ZA 50 EB	Brushed stainless steel outside corner piece for ZA	2" – 50 mm



Schluter®-KERDI-BOARD-Z/V

Item No.	Description	Size
Length supplied: 8' 2-1/2" – 2.50 m		
V/KB Z 19 EB	Brushed stainless steel connector for ZC and ZA	3/4" – 19 mm
V/KB Z 25 EB	Brushed stainless steel connector for ZC and ZA	1" – 25 mm
V/KB Z 38 EB	Brushed stainless steel connector for ZC and ZA	1-1/2" – 38 mm
V/KB Z 50 EB	Brushed stainless steel connector for ZC and ZA	2" – 50 mm



Schluter®-KERDI-BOARD-ZI/V

Item No.	Description	Size
V/KB ZI 19 E	Stainless steel internal connector for ZC or ZA	3/4" – 19 mm
V/KB ZI 25 E	Stainless steel internal connector for ZC or ZA	1" – 25 mm
V/KB ZI 38 E	Stainless steel internal connector for ZC or ZA	1-1/2" – 38 mm
V/KB ZI 50 E	Stainless steel internal connector for ZC or ZA	2" – 50 mm



Schluter®-KERDI-BOARD-ZB

Item No.	Description	Size
Length supplied: 8' 2-1/2" – 2.50 m		
KB ZB 19 E	U-shaped stainless steel profile with 3 perforated anchoring legs	3/4" – 19 mm
KB ZB 25 E	U-shaped stainless steel profile with 3 perforated anchoring legs	1" – 25 mm
KB ZB 38 E	U-shaped stainless steel profile with 3 perforated anchoring legs	1-1/2" – 38 mm
KB ZB 50 E	U-shaped stainless steel profile with 3 perforated anchoring legs	2" – 50 mm



Schluter®-KERDI-BOARD-ZSD

Item No.	Description	Length	Packaging
KB ZSD 90 E	Stainless steel anchor	3-1/2" – 9 cm	25 anchors/box
KB ZSD 110 E	Stainless steel anchor	4-5/16" – 11 cm	25 anchors/box
KB ZSD 90 Z	Stainless steel anchor	3-1/2" – 9 cm	25 anchors/box
KB ZSD 110 Z	Stainless steel anchor	4-5/16" – 11 cm	25 anchors/box



Schluter®-KERDI-BOARD-ZDK

Item No.	Description	Size
KB ZDK 12/10 M	Double-sided tape	1/2" x 33' – 12.5 mm x 10 m
KB ZDK 19/10 M	Double-sided tape	3/4" x 33' – 19 mm x 10 m
KB ZDK 30/10 M	Double-sided tape	1-3/16" x 33' – 30 mm x 10 m



Schluter®-KERDI-BOARD-ZSA

Item No.	Description	Size
KB ZSA 100/45M	Joint replacement tape	4" x 148' – 100 mm x 45 m



Schluter®-KERDI-BOARD-ZFP		
Item No.	Description	Size
KB ZFP 35	Flat plastic profile	1-3/8" x 8' 2-1/2" – 35 mm x 2.5 m



8.1 Schluter®-KERDI-BAND		Waterproofing strips	
Item No.	Width	Length	Thickness
KEBA 100/125/5M	5" – 12.5 cm	16' 5" - 5 m	4 mil
KEBA 100/125/10M	5" – 12.5 cm	33' - 10 m	4 mil
KEBA 100/185/5M	7-1/4" – 18.5 cm	16' 5" - 5 m	4 mil
KEBA 100/250/5M	10" – 25 cm	16' 5" - 5 m	4 mil
KEBA 100/125	5" – 12.5 cm	98' 5" - 30 m	4 mil
KEBA 100/185	7-1/4" – 18.5 cm	98' 5" - 30 m	4 mil
KEBA 100/250	10" – 25 cm	98' 5" - 30 m	4 mil



8.1 Schluter®-KERDI-FLEX		Waterproofing strips for use above movement joints	
Item No.	Width	Length	Thickness
FLEX 125/5M	5" – 12.5 cm	16' 5" - 5 m	12 mil
FLEX 250/5M	10" – 25 cm	16' 5" - 5 m	12 mil
FLEX 125/30	5" – 12.5 cm	98' 5" - 30 m	12 mil
FLEX 250/30	10" – 25 cm	98' 5" - 30 m	12 mil



8.1 Schluter®-KERDI-KERECK-F		Pre-formed corners
Item No.	Thickness	Package
KERECK/FI 2	4 mil	2 inside corners
KERECK/FI 10	4 mil	10 inside corners
KERECK/FA 2	4 mil	2 outside corners
KERECK/FA 10	4 mil	10 outside corners



8.1 Schluter®-KERDI-KERS-B		Preformed corner	
Item No.	Thickness	Description	Packaging
KERECK 135 FI 2	4 mil	Inside corner, 135°	2 units
KERECK 135 FI 10	4 mil	Inside corner, 135°	10 units
KERSB135 K LR	4 mil	Bench corners	1 right and 1 left
KERSB135 K 5LR	4 mil	Bench corners	5 right and 5 left
KERSB135 K	4 mil	Bench/ neo-angle corner kit	1 right and 1 left bench corner, and 2 135° inside corners



8.1 Schluter®-KERDI-SEAL-PS Pipe seal with over-molded rubber gasket

Item No.	Pipe nipple opening diam.	Thickness	Packaging
KMS185/12	1/2" – 12.5 mm	4 mil	1 unit
KMS185/20	3/4" – 20 mm	4 mil	1 unit
KMS10185/12	1/2" – 12.5 mm	4 mil	10 units
KMS10185/20	3/4" – 20 mm	4 mil	10 units



8.1 Schluter®-KERDI-SEAL-MV Mixing valve seal with over-molded rubber gasket



Item No.	Mixing valve opening diam.	Thickness	Packaging
KMSMV235/114	4-1/2" – 114 mm	4 mil	1 unit
KMSMV10235/114	4-1/2" – 114 mm	4 mil	10 units



8.3 Schluter®-KERDI-FIX Adhesive/sealant

Item No.	Description
KERDIFIX / <i>color</i> *	Cartridge - 9.81 oz (290 ml)
KERDIFIX 100 G	Tube - 3.38 oz (100 ml)

***Color Codes**

 **BW** Bright white  **G** Grey

To complete the item number, add the *color* code (e.g., KERDIFIX / **BW**).



Schluter®-KERDI-BOARD-ZT

Item No.	Description	Size	Packaging
KB ZT 32 Z	Galvanized steel attachment washers	1-1/4" – 32 mm	100 washers/box
KB ZT 32 Z/L	Galvanized steel attachment washers	1-1/4" – 32 mm	1000 washers/box



Schluter®-KERDI-BOARD-ZS

Item No.	Description	Size	Packaging
KB ZS 35 G	Course thread screw for wood framing	1-5/8" – 41 mm	200 screws/box
KB ZS 55 G	Course thread screw for wood framing	2" – 50 mm	100 screws/box
KB ZS 75 G	Course thread screw for wood framing	3" – 75 mm	100 screws/box

Schluter®-KERDI-BOARD-ZT/-ZS

Item No.	Description	Size	Packaging
KBZS35GT32Z	Washer and screw set	1-5/8" – 41 mm	40 each/box



Schluter®-KERDI-BOARD 10-Year Limited Warranty

COVERAGE AND CONDITIONS: Subject to the conditions and limitations as stated hereinafter, **Schluter-Systems*** warrants that **Schluter®-KERDI-BOARD** (the "Product") will be free from all manufacturing defects, and will not rot, deteriorate or break down under normal use for a period of ten (10) years from the date of purchase only when the Product is used and installed in accordance with the terms and conditions of the Schluter®-KERDI-BOARD Technical Data Sheet and industry standard guidelines that are not in conflict with the Data Sheet in effect at the time of installation. Further, efflorescence is considered to be a natural occurrence with cementitious materials and is therefore not considered to be a defective condition and is not covered by this warranty. It is the responsibility of the owner/ builder/ installer to ensure the suitability of all building materials and all associated building materials for the owner's intended use. It is recommended that the owner consult with an experienced and professional installer.

RESOLUTION: If the Product fails to meet this warranty, then the owner's exclusive remedy and the sole obligation of Schluter-Systems, at its election, shall be to a) reinstall or replace the failed portion of the tile assembly or b) pay an amount not to exceed the original square foot cost of the installation of the tile assembly verified to be defective. Tile assembly is defined to include all KERDI-BOARD materials, non-reusable tile surfaces, and the appropriate setting and grouting materials. Further, due to conditions beyond the control of Schluter-Systems (e.g., color and shade availability, discontinuation, normal wear and tear), Schluter-Systems cannot guarantee or warrant an exact match to the specific tile, stone, or other covering materials used in the installation. In such events, substantially similar materials may be substituted.

DISCLAIMER: THERE ARE NO WARRANTIES BEYOND THIS EXPRESSED WARRANTY AS STATED ABOVE. ALL OTHER WARRANTIES, REPRESENTATIONS OR CONDITIONS, EXPRESSED OR IMPLIED, ARE DISCLAIMED AND EXCLUDED, INCLUDING WARRANTIES, REPRESENTATIONS OR CONDITIONS OF **MERCHANTABILITY** OR FITNESS FOR A PARTICULAR PURPOSE ARISING BY STATUTE OR OTHERWISE BY LAW OR FROM A COURSE OF DEALING OR USAGE OF TRADE. SCHLUTER-SYSTEMS EXCLUDES AND IN NO EVENT SHALL HAVE ANY LIABILITY FOR LOST PROFITS OR ANY OTHER INDIRECT, SPECIAL, INCIDENTAL, PUNITIVE, EXEMPLARY, OR CONSEQUENTIAL DAMAGES, ARISING OUT OF OR OTHERWISE CONNECTED TO FAILURE OF THE PRODUCT OR TILE ASSEMBLY OF WHICH IT IS PART, NORMISUSE OF THE PRODUCT OR TILE ASSEMBLY, REGARDLESS OF ANY STRICT LIABILITY, ACTIVE OR PASSIVE NEGLIGENCE OF SCHLUTER-SYSTEMS, AND REGARDLESS OF THE LEGAL THEORY (CONTRACTOR TORT OR EXTRA-CONTRACTUAL OR OTHER), NOR FROM ACTS OF WAR, TERRORISM, FAULTY AND NEGLIGENT PENETRATION OF THE SYSTEM, FIRES, EXPLOSIONS, ACTS OF GOD, INTENTIONAL ACTS OF DESTRUCTION OR ANY LOSSES DUE TO STRUCTURAL FAILURE OR OTHER CAUSES UNRELATED TO THE PRODUCT OR DELAYS, OR ANY OTHER INCIDENTAL OR CONSEQUENTIAL DAMAGES. THIS WARRANTY IS GIVEN IN LIEU OF ANY OTHER WARRANTY EXPRESSED OR IMPLIED. THE REMEDIES CONTAINED HEREIN ARE THE ONLY REMEDIES AVAILABLE FOR BREACH OF THIS WARRANTY. THIS LIMITED WARRANTY GIVES YOU SPECIFIC LEGAL RIGHTS; SOME STATES AND PROVINCES DO NOT ALLOW DISCLAIMERS OR OTHER RESTRICTIONS OF IMPLIED WARRANTIES, SO SOME OF THE ABOVE DISCLAIMERS MAY NOT APPLY TO YOU. IF THE PRODUCT IS USED IN CONJUNCTION WITH OTHER SCHLUTER PRODUCTS, A DIFFERENT SCHLUTER WARRANTY MAY APPLY. PLEASE SEE https://www.schluter.com/schluter-us/en_US/warranty FOR MORE INFORMATION. FOR THE MOST CURRENT INFORMATION AND MATERIALS REGARDING SCHLUTER SYSTEMS WARRANTIES AND PROGRAMS, PLEASE VISIT <https://www.schluter.com/DOWNLOADFILES>.

TRANSFERABILITY: This Limited Warranty extends ONLY to the original end user (defined as original intended owner and user of the property/unit in which the installation is incorporated - herein referred to as "Owner") and is not transferable or assignable, unless approved in writing by the Technical Director or an Officer of Schluter-Systems or otherwise prohibited by specific state or provincial law.

MODIFICATIONS TO WARRANTY: No changes or modification of any terms or conditions of this warranty are allowed unless authorized by written agreement and signed by the Technical Director or an Officer of Schluter-Systems.

EFFECTIVE DATE: This warranty shall supersede and replace any and all prior oral or written warranties, agreements, or other such representations made by or on behalf of Schluter-Systems relative to the Product or the application of the Product and shall apply to any installation occurring on or after January 1, 2013.

CLAIMS ON THIS LIMITED WARRANTY: To make a claim under this Limited Warranty, the Owner must provide Schluter-Systems with written notice within 30 days of any alleged defect in the Product covered by this Limited Warranty, together with date and proof of purchase of the Product, proof of the costs of the original installation and name and address of all installers, failing which this Limited Warranty shall be of no legal effect. Schluter-Systems reserves the right at its election and as a condition of this Limited Warranty to inspect the alleged failed and defective condition.

All U.S. Claims shall be sent to:

Schluter Systems L.P.
Attn: Warranty Claims Dept.
194 Pleasant Ridge Road
Plattsburgh, NY 12901-5841

All Canadian Claims shall be sent to:

Schluter Systems (Canada), Inc.
Attn: Warranty Claims Dept.
21100 chemin Ste-Marie
Ste-Anne-de-Bellevue, QC H9X 3Y8

*For the purpose of this warranty **Schluter Systems, L.P.** shall provide the warranty for all products for end users located in the United States, and **Schluter Systems (Canada) Inc.** shall provide the warranty for all products for end users located in Canada. This warranty is limited to sales of the Product made in and intended for use in the United States and Canada.



Schluter®-KERDI-BOARD Profiles 5-Year Limited Warranty

COVERAGE AND CONDITIONS: Subject to the conditions and limitations as stated hereinafter, **Schluter-Systems*** warrants that **Schluter®-KERDI-BOARD Profiles** (the "Products")** will be free from manufacturing defects for a period of five (5) years from the date of purchase and only when the Products are used and installed in accordance with the terms and conditions of the Schluter®-KERDI-BOARD Technical Data Sheet and industry standard guidelines that are not in conflict with the Data Sheet in effect at the time of installation. It is the responsibility of the owner/builder/installer to ensure the suitability of all building materials and all associated building materials for the owner's intended use. Visual defects or nonconformities apparent prior to installation are not covered by this warranty. Further, this warranty does not cover normal wear and tear or other damage (e.g., scratches, discoloration, fading, etc.) caused by impacts or accidents. It is recommended that the owner consult an experienced and professional installer.

RESOLUTION: If the Products fail to meet this warranty, then the owner's exclusive remedy and the sole obligation of Schluter-Systems, at its election, shall be to a) reinstall or replace the failed portion of the tile assembly or b) pay an amount not to exceed the original square foot cost of the installation of the tile assembly verified to be defective. Tile assembly is defined to include all Schluter®-KERDI-BOARD Profiles, non-reusable tile surfaces, and the appropriate setting and grouting materials. Further, due to conditions beyond the control of Schluter-Systems (e.g., color and shade availability, discontinuation, normal wear and tear), Schluter-Systems cannot guarantee or warrant an exact match to the specific tile, stone, or other covering materials used in the installation. In such events, substantially similar materials may be substituted.

DISCLAIMER: THERE ARE NO WARRANTIES BEYOND THIS EXPRESSED WARRANTY AS STATED ABOVE. ALL OTHER WARRANTIES, REPRESENTATIONS OR CONDITIONS, EXPRESSED OR IMPLIED, ARE DISCLAIMED AND EXCLUDED, INCLUDING WARRANTIES, REPRESENTATIONS OR CONDITIONS OF **MERCHANTABILITY** OR FITNESS FOR A PARTICULAR PURPOSE ARISING BY STATUTE OR OTHERWISE BY LAW OR FROM A COURSE OF DEALING OR USAGE OF TRADE. SCHLUTER-SYSTEMS EXCLUDES AND IN NO EVENT SHALL HAVE ANY LIABILITY FOR LOST PROFITS OR ANY OTHER INDIRECT, SPECIAL, INCIDENTAL, PUNITIVE, EXEMPLARY, OR CONSEQUENTIAL DAMAGES, ARISING OUT OF OR OTHERWISE CONNECTED TO FAILURE OF THE PRODUCTS OR TILE ASSEMBLY OF WHICH THEY ARE PART, NOR MISUSE OF THE PRODUCTS OR TILE ASSEMBLY, REGARDLESS OF ANY STRICT LIABILITY, ACTIVE OR PASSIVE NEGLIGENCE OF SCHLUTER SYSTEMS, AND REGARDLESS OF THE LEGAL THEORY (CONTRACT OR TORT OR EXTRA-CONTRACTUAL OR OTHER), NOR FROM ACTS OF WAR, TERRORISM, FAULTY AND NEGLIGENT PENETRATION OF THE SYSTEM, FIRES, EXPLOSIONS, ACTS OF GOD, INTENTIONAL ACTS OF DESTRUCTION OR ANY LOSSES DUE TO STRUCTURAL FAILURE OR OTHER CAUSES UNRELATED TO THE PRODUCTS OR DELAYS, OR ANY OTHER INCIDENTAL OR CONSEQUENTIAL DAMAGES. THIS WARRANTY IS GIVEN IN LIEU OF ANY OTHER WARRANTY EXPRESSED OR IMPLIED. THE REMEDIES CONTAINED HEREIN ARE THE ONLY REMEDIES AVAILABLE FOR BREACH OF THIS WARRANTY. THIS LIMITED WARRANTY GIVES YOU SPECIFIC LEGAL RIGHTS, SOME STATES AND PROVINCES DO NOT ALLOW DISCLAIMERS OR OTHER RESTRICTIONS OF IMPLIED WARRANTIES SO SOME OF THE ABOVE LIMITATIONS MAY NOT APPLY TO YOU. FOR THE MOST CURRENT INFORMATION AND MATERIALS REGARDING SCHLUTER SYSTEMS WARRANTIES AND PROGRAMS, PLEASE VISIT <https://www.schluter.com/DOWNLOADFILES>.

TRANSFERABILITY: This Limited Warranty extends ONLY to the original end user (defined as original intended owner and user of the property/unit in which the installation is incorporated - herein referred to as "Owner") and is not transferable or assignable, unless approved in writing by the Technical Director or an Officer of Schluter-Systems or otherwise prohibited by specific state or provincial law.

MODIFICATIONS TO WARRANTY: No changes or modification of any terms or conditions of this warranty are allowed unless authorized by written agreement and signed by the Technical Director or an Officer of Schluter-Systems.

EFFECTIVE DATE: This warranty shall supersede and replace any and all prior oral or written warranties, agreements, or other such representations made by or on behalf of Schluter-Systems relative to the Products or the application of the Products and shall apply to any installation occurring on or after January 1, 2013.

CLAIMS ON THIS LIMITED WARRANTY: To make a claim under this Limited Warranty, the Owner must provide Schluter-Systems with written notice within 30 days of any alleged defect in the Products covered by this Limited Warranty, together with date and proof of purchase of the Products, proof of the costs of the original installation and name and address of all installers, failing which this Limited Warranty shall be of no legal effect. Schluter-Systems reserves the right at its election and as a condition of this Limited Warranty to inspect the alleged failed and defective condition.

All U.S. Claims shall be sent to:

Schluter Systems L.P.
Attn: Warranty Claims Dept.
194 Pleasant Ridge Road
Plattsburgh, NY 12901-5841

All Canadian Claims shall be sent to:

Schluter Systems (Canada), Inc.
Attn: Warranty Claims Dept.
21100 chemin Ste-Marie
Ste-Anne-de-Bellevue, QC H9X 3Y8

*For the purpose of this warranty **Schluter Systems, L.P.** shall provide the warranty for all products for end users located in the United States, and **Schluter Systems (Canada) Inc.** shall provide the warranty for all products for end users located in Canada. This warranty is limited to sales of the Products made in and intended for use in the United States and Canada.

****Schluter®-KERDI-BOARD Profiles (the "Products"):** The Products are defined to include all Schluter®-KERDI-BOARD profiles referred to in the Schluter®-KERDI-BOARD Data Sheet.



Schluter Systems L.P. • 194 Pleasant Ridge Road, Plattsburgh, NY 12901-5841 • Tel.: 800-472-4588 • Fax: 800-477-9783
Schluter Systems (Canada) Inc. • 21100 chemin Ste-Marie, Ste-Anne-de-Bellevue, QC H9X 3Y8 • Tel.: 800-667-8746 • Fax: 877-667-2410

www.schluter.com

This technical data sheet is subject to change without notice. Please visit www.schluter.com for the latest version.