

Installation Instructions

20SS Bumper Rail

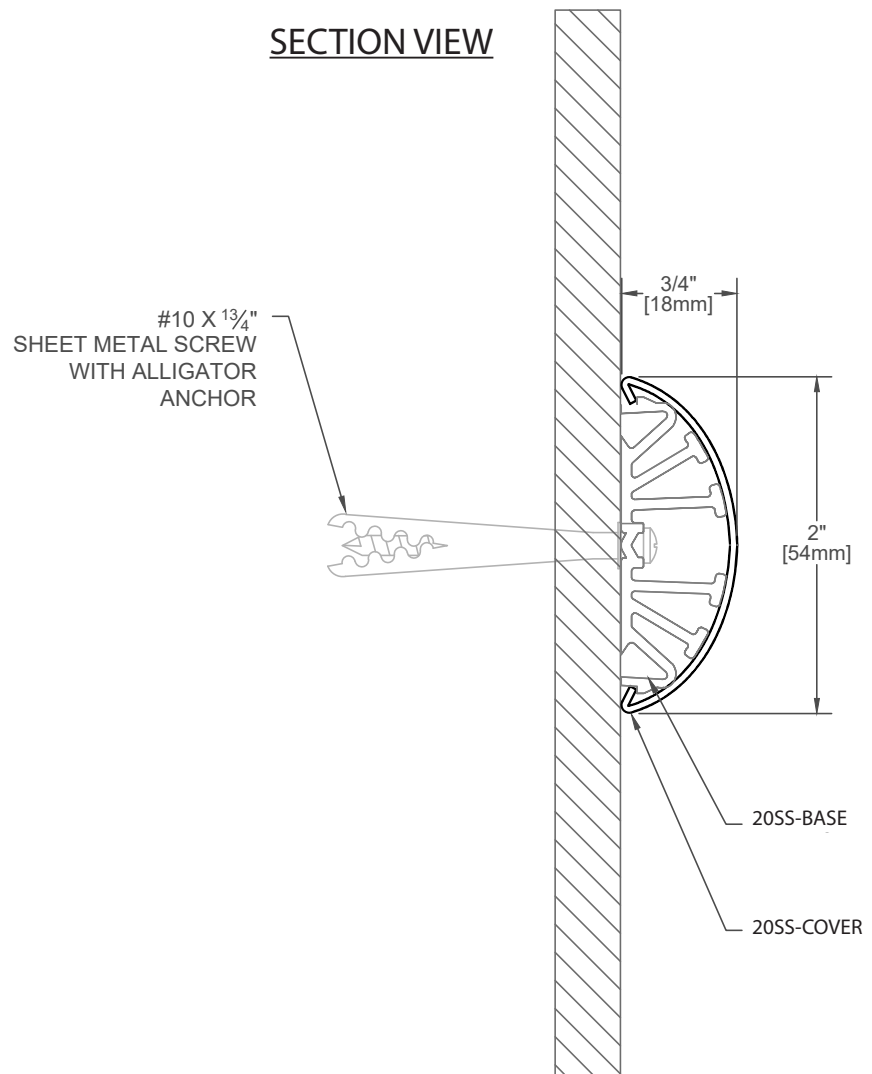
Please read all instructions before installing wallguard.

Important

1. Acclimate materials 24 hrs before installation. Maintain temperature controlled environment after installation
2. Install in accordance with manufacturer's installation instructions. Failure to do so will void the warranty.

Installation tips

1. Cut covers up to 1/16" (1.6mm) longer to ensure a tight fit.
2. Lubricate blades when cutting aluminum to reduce burrs.



Recommended tools

Pencil/Marker/Chalk line; Tape Measure; Drill + Phillips Driver Bit; Rubber Mallet; Cotton Rags; Straight Edge; Level; Mild, non-abrasive cleaner or stainless steel polish; Circular Saw—capable of cutting metal, low RPM, dry-cut; Circular Saw Blade—designed to cut stainless steel; thin or ultra-thin kerf, high tooth count (76T-100T), non-abrasive, carbide-tipped or cermet-tipped blade

IPC.3484/REV.1

IPC® Door + Wall Protection

inpro.com • 800.222.5556 • 262.679.9010

World Headquarters S80 W18766 Apollo Drive, Muskego, WI 53150 USA

Installation Hotline: 866.394.6776

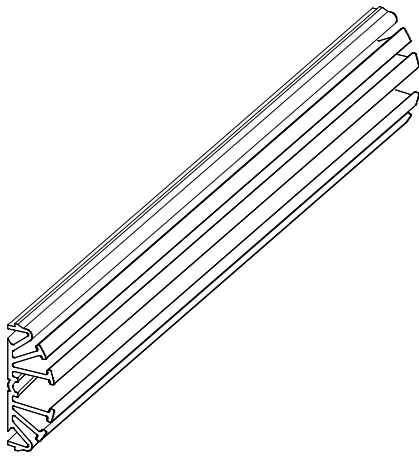
inpro®

Installation Instructions

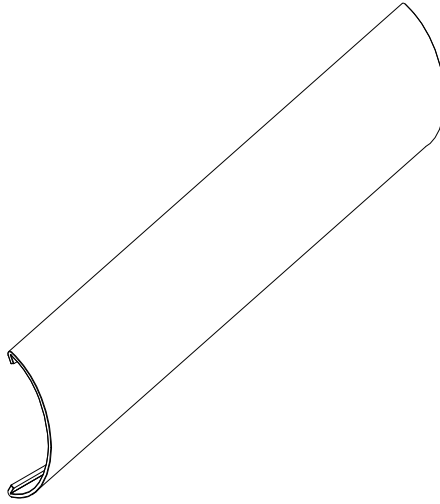
20SS Bumper Rail

Please read all instructions before installing wallguard.

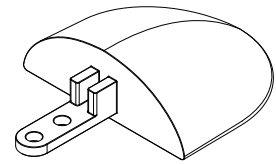
Components and Fasteners



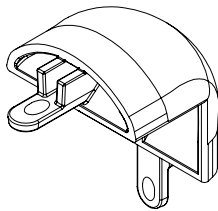
20SS-BASE
BLACK PLASTIC
MOUNTING BASE



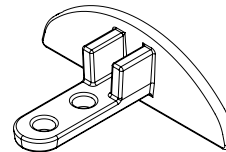
20SS-COVER
STAINLESS STEEL
COVER



20SS-EC
STAINLESS STEEL
END CAP



20SS-OC
STAINLESS STEEL
OUTSIDE CORNER



20SS-QSEC
STAINLESS STEEL
QUICK STOP END CAP

Wall Condition	Specified Fasteners	Inpro Part #
Gypsum/Concrete	#10 x 1 3/4" Phillips Pan Head Sheet Metal Screw with Alligator Anchor	HWK-CC

IPC® Door + Wall Protection

inpro.com • 800.222.5556 • 262.679.9010

World Headquarters S80 W18766 Apollo Drive, Muskego, WI 53150 USA

Installation Hotline: 866.394.6776

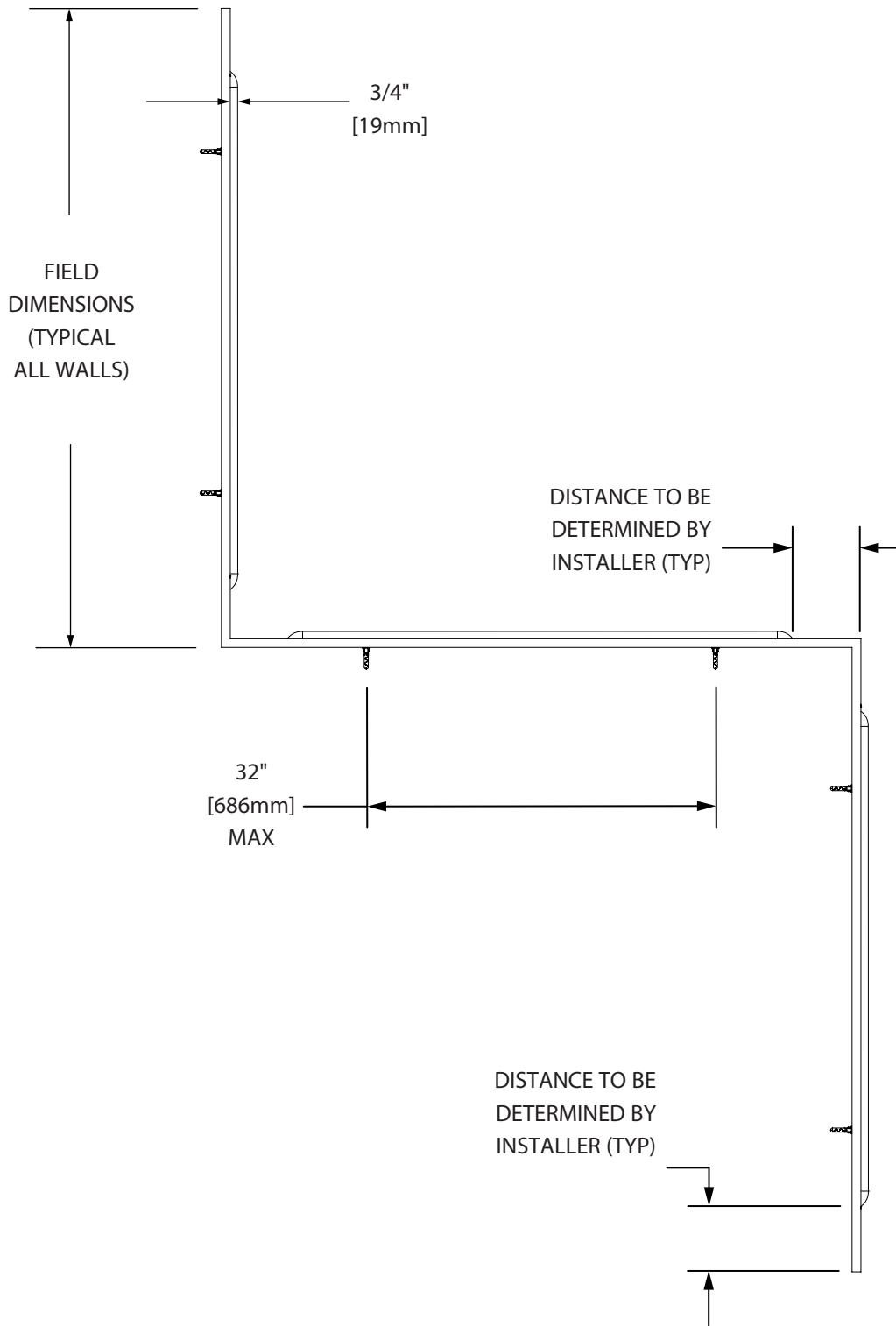
inpro®

Installation Instructions

20SS Bumper Rail

Please read all instructions before installing wallguard.

Layout Views



IPC® Door + Wall Protection

inpro.com • 800.222.5556 • 262.679.9010

World Headquarters S80 W18766 Apollo Drive, Muskego, WI 53150 USA

Installation Hotline: 866.394.6776

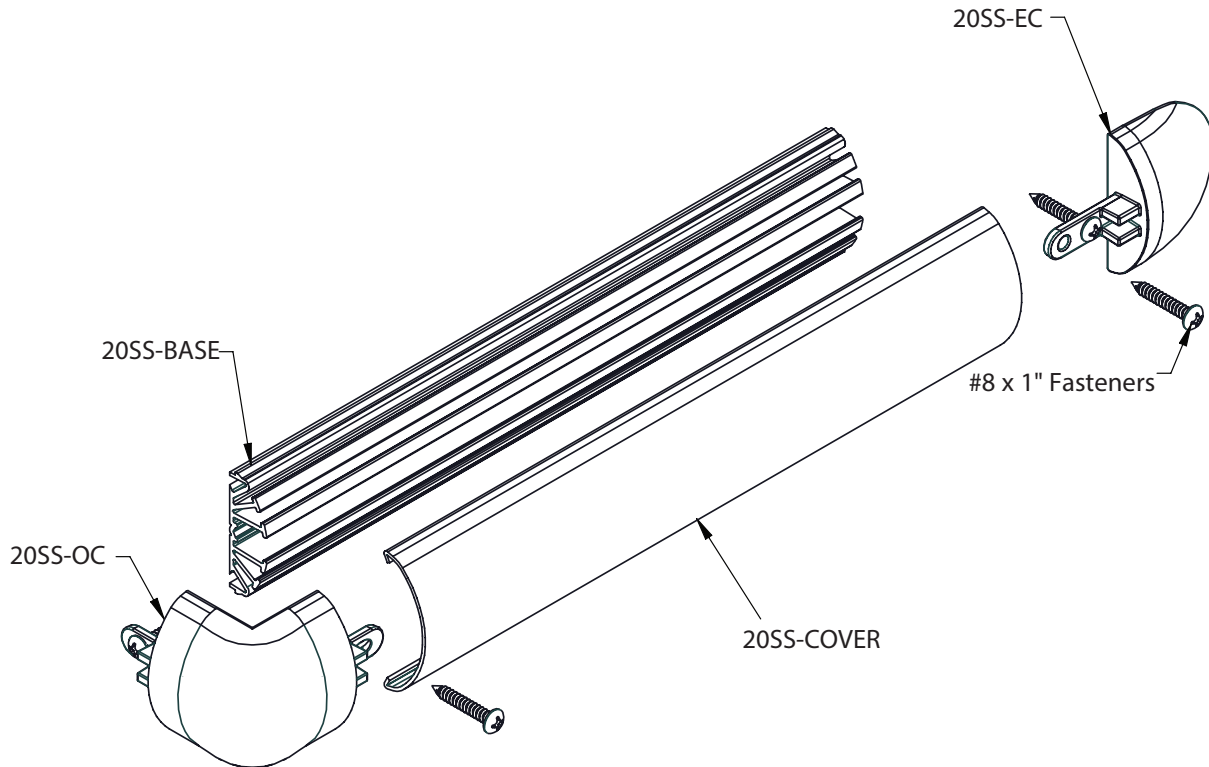
inpro®

Installation Instructions

20SS Bumper Rail

Please read all instructions before installing wallguard.

Exploded Assembly



IPC® Door + Wall Protection

inpro.com • 800.222.5556 • 262.679.9010

World Headquarters S80 W18766 Apollo Drive, Muskego, WI 53150 USA

Installation Hotline: 866.394.6776

inpro®

Installation Instructions

20SS Bumper Rail

Please read all instructions before installing wallguard.

FIG. 1

Using a tape measure and chalk line (or pencil), mark a line on the case indicating placement of the top edge of bumper according to your height specification.

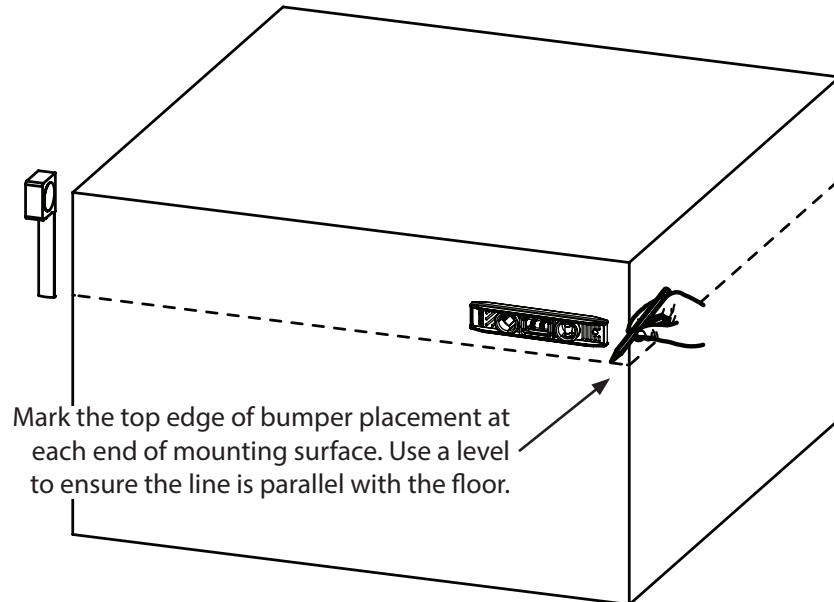
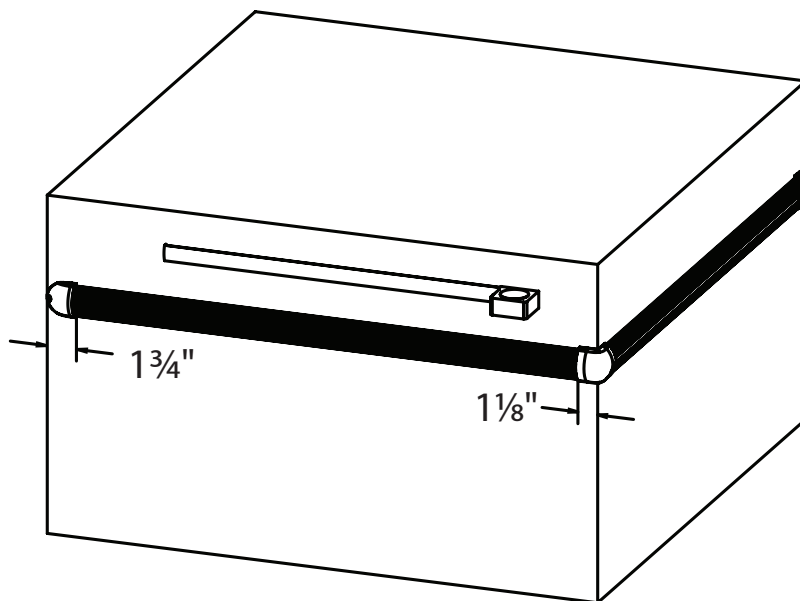


FIG. 2

Measure case to determine base length. Allow an offset of 1 3/4" for end caps and 1 1/8" for corners



Installation Instructions

20SS Bumper Rail

Please read all instructions before installing wallguard.

FIG. 3

Use a circular saw to cut base to length.

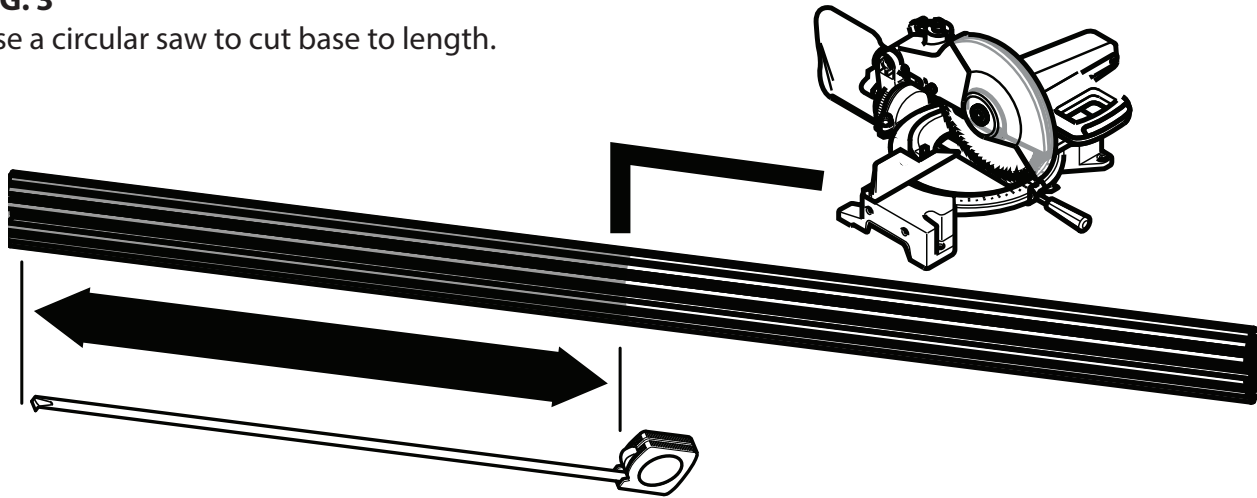
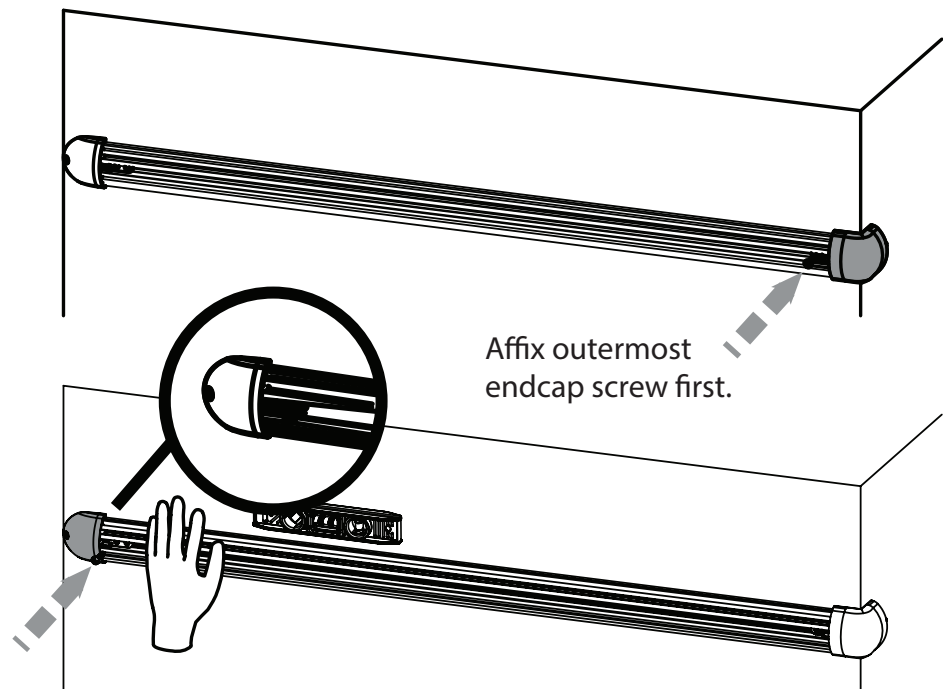


FIG. 4

Holding the ends and corners, align base to verify cut lengths before attaching to case. First affix corners, using recommended screws. Then, smooth bumper base against surface and affix end pieces.



IPC® Door + Wall Protection

inpro.com • 800.222.5556 • 262.679.9010

World Headquarters S80 W18766 Apollo Drive, Muskego, WI 53150 USA

Installation Hotline: 866.394.6776

inpro®

Installation Instructions

20SS Bumper Rail

Please read all instructions before installing wallguard.

FIG. 5

Affix remaining length of base with screws placed approximately every 6 inches.

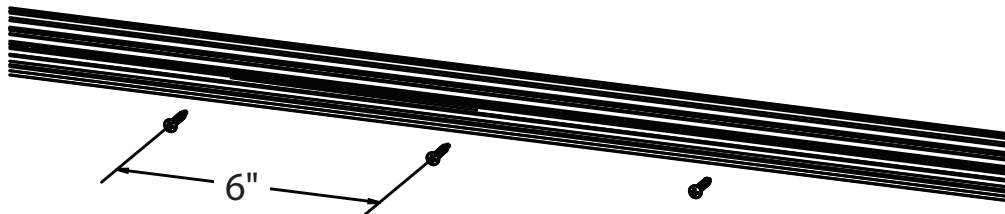
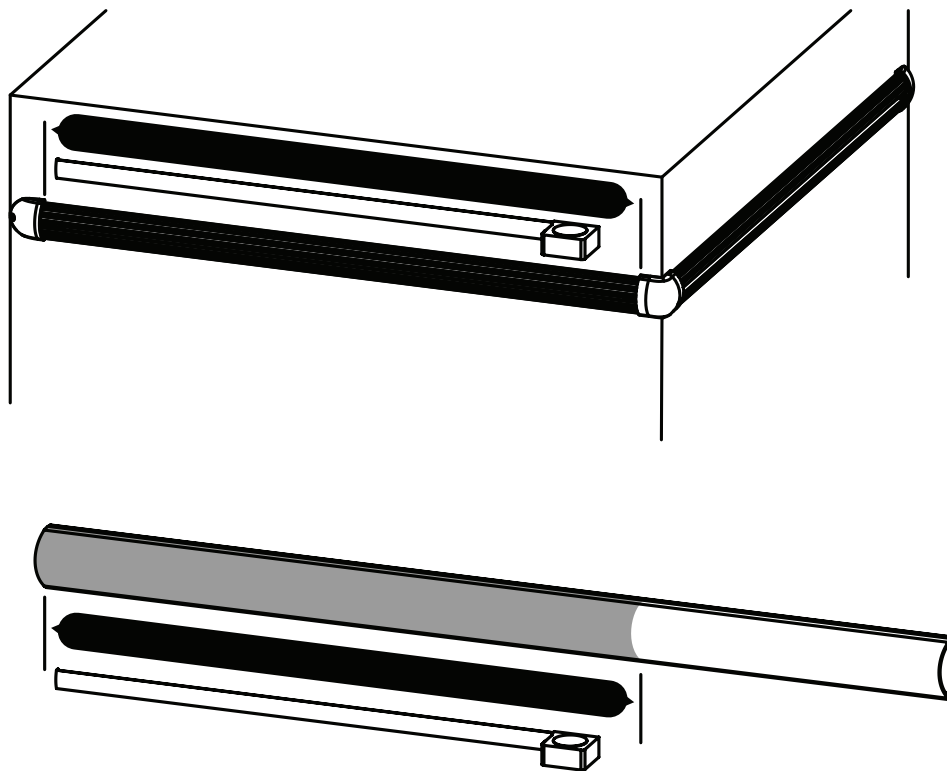


FIG. 6

With ends, corners and base installed, measure along the base from inside edges of ends and corners, to determine length of stainless top.



IPC® Door + Wall Protection

inpro.com • 800.222.5556 • 262.679.9010

World Headquarters S80 W18766 Apollo Drive, Muskego, WI 53150 USA

Installation Hotline: 866.394.6776

inpro®

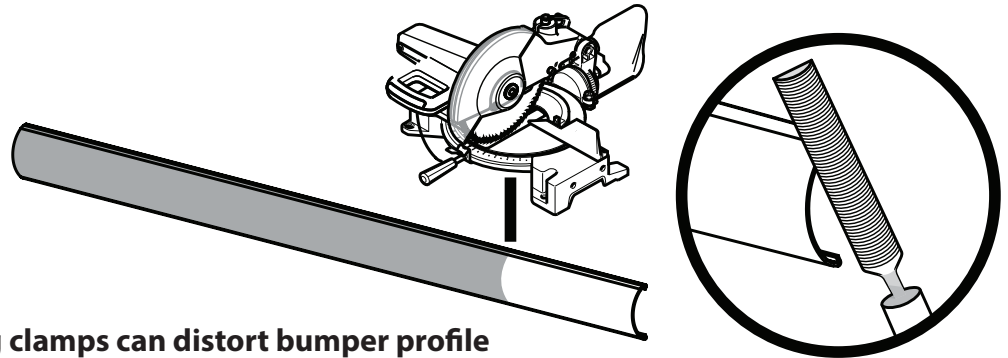
Installation Instructions

Please read all instructions before installing wallguard.

20SS Bumper Rail

FIG. 7

Secure stainless top in place with clamps prior to cutting. Using a circular saw with stainless steel cutting blade, cut top to length and file ends to remove burrs, if necessary. Lower saw gently onto bumper—do not force, allowing saw blade to do the work.



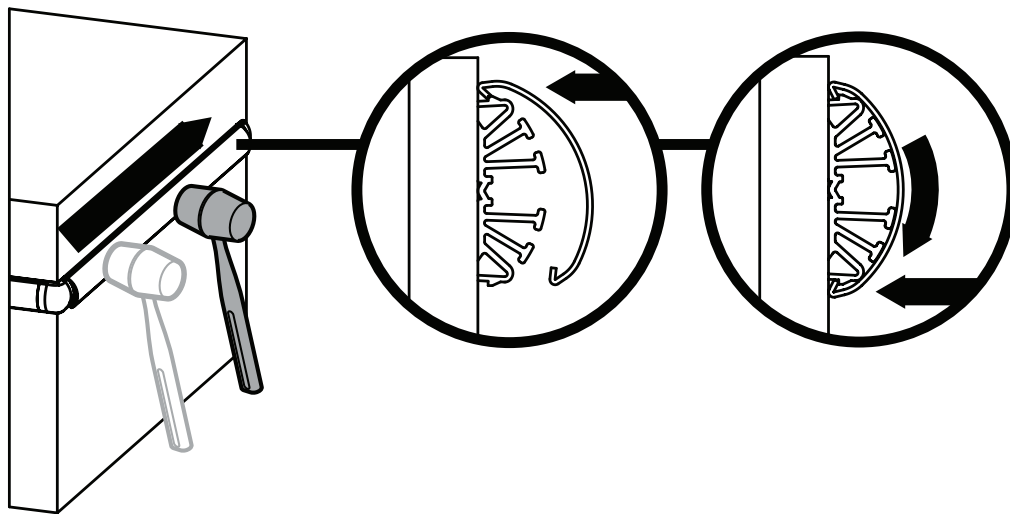
CAUTION: Over-tightening clamps can distort bumper profile

CAUTION: Blade and bumpertop will be hot after cutting

- Metal cutoff saw and blade with a thin-gauge, stainless steel application specification
- Example: Makita LC 1230 + A-90847 12" 78TC.T. Dry Cut Stainless Steel blade
- High tooth count: 76T–100T
- Kerf: thin to ultra-thin
- Cermet blade, tungsten-carbide tips
- Saw speed: 1500 RPM - 2000 RPM
- Non-abrasive blade will prevent burning

FIG. 8

Install bumper top onto base by pressing upper half to snap over base latching feature. Using a soft mallet or dead blow hammer and cloth, apply pressure to the bottom half of bumper to pivot and snap into place. Continue along length of bumper top until completely installed.



IPC® Door + Wall Protection

inpro.com • 800.222.5556 • 262.679.9010

World Headquarters S80 W18766 Apollo Drive, Muskego, WI 53150 USA

Installation Hotline: 866.394.6776

inpro®

Installation Instructions

20SS Bumper Rail

Please read all instructions before installing wallguard.

FIG. 9

Once installed, peel back protective film and clean the stainless top using a soft, non-abrasive cloth. See cleaning instructions (separate document) for more details

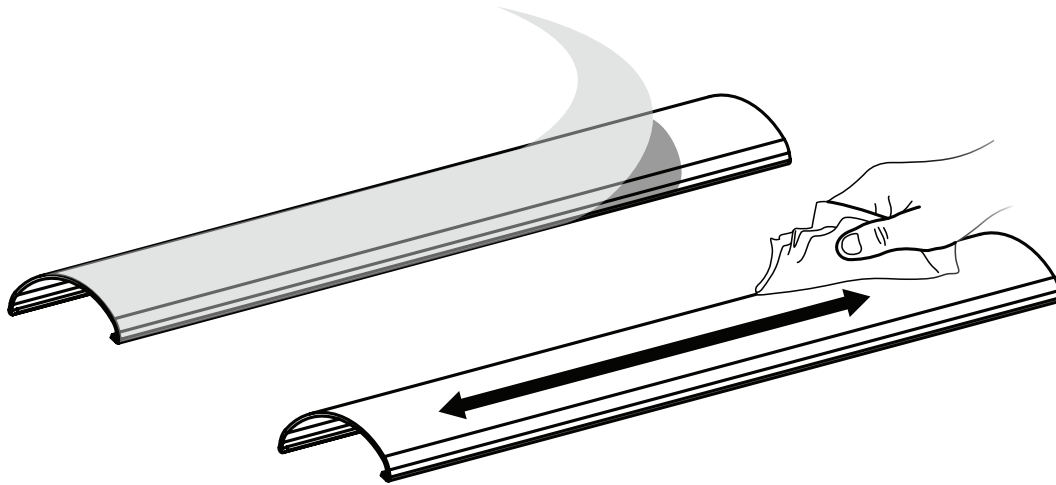
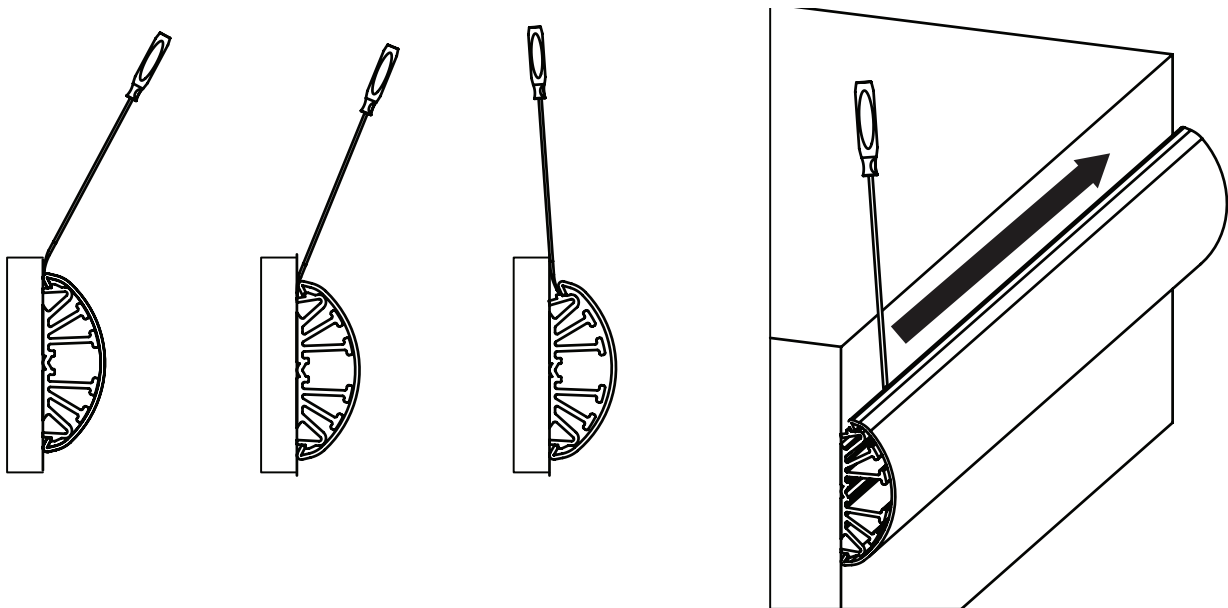


FIG. 10

Stainless top can be removed from base with a prying motion. Insert a thin, rigid tool between bumper top hook and mounting surface/wall. Press straight in on internal leg feature to disengage snap. Pivot pry tool to release top from base snap feature



IPC® Door + Wall Protection

inpro.com • 800.222.5556 • 262.679.9010

World Headquarters S80 W18766 Apollo Drive, Muskego, WI 53150 USA

Installation Hotline: 866.394.6776

inpro®