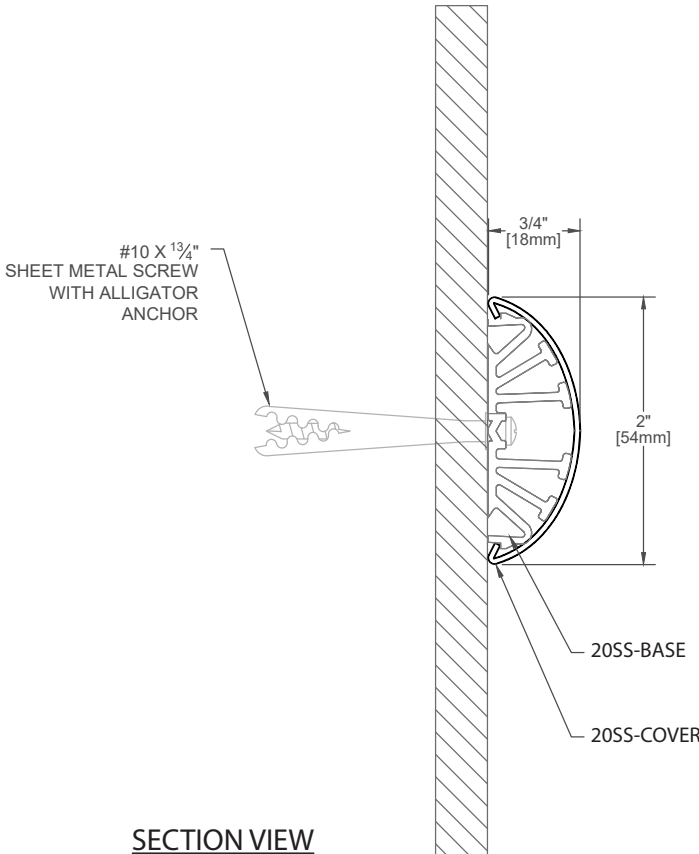
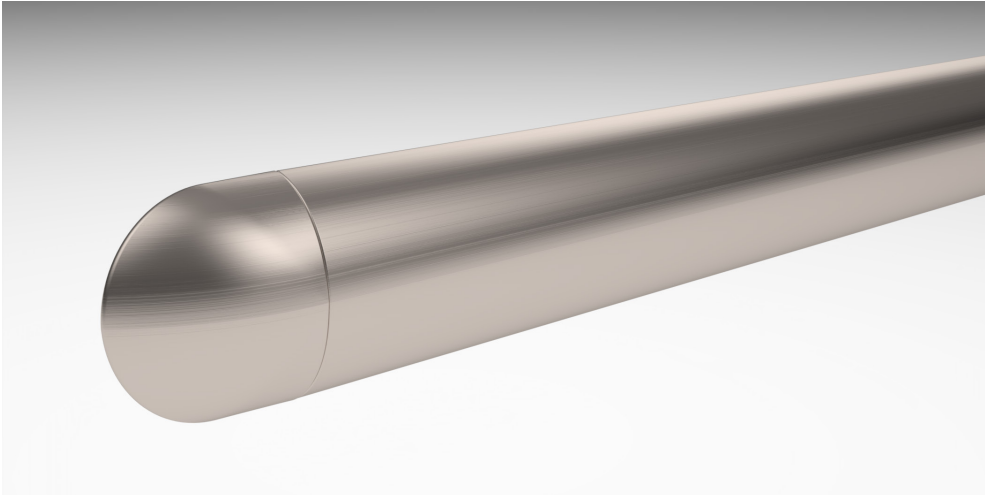


# 20SS Bumper Rail

## Bumper Rail



- Protects areas with high traffic with a narrow profile.
- Brushed stainless steel finish provides a high end aesthetic.
- Great for use as a chair rail or top cap for Palladium sheet.
- Easy installation, clean-up and maintenance.

IPC.3485/REV.1

# 20SS Bumper Rail

## Suggested Specifications

---

### PART 1 - GENERAL

#### 1.01 SUMMARY

A. Stainless Steel Bumper Rail system for wall protection

#### 1.02 SECTION INCLUDES

A. 20SS Stainless Steel Bumper Rail Systems

#### 1.03 SUBMITTALS

A. Product data for each type of Bumper Rail specified.

B. Detail drawings indicating mounting details with the appropriate fasteners for specific project substrates.

C. Samples for verification purposes of Bumper Rail, 6" (152mm) long, in full size profiles of each type and color indicated.

D. Cleaning and maintenance instructions for door and wall protection systems.

#### 1.04 DELIVERY, STORAGE AND HANDLING

A. Deliver materials in unopened factory packaging to the jobsite and store in original packaging in a climate controlled location away from direct sunlight.

#### 1.05 PROJECT CONDITIONS

A. Products must be installed in an interior climate controlled environment.

#### 1.06 WARRANTY

A. Standard IPC Limited Lifetime Warranty against material and manufacturing defects.

### PART 2 - PRODUCTS

#### 2.01 MANUFACTURER

A. Acceptable Manufacturer: IPC Door and Wall Protection Systems, InPro Corporation, PO Box 406 Muskego, WI 53150 USA; Telephone: 800.222.5556, Fax: 888.715.8407, www.inprocorp.com

B. Substitutions: Not permitted

C. Provide all Bumper Rails and wall protection from a single source.

### 2.02 MANUFACTURED UNITS

#### A. Bumper Rails

1. Stainless Steel Bumper Rail

#### Model Size

20SS, 2" (54mm) h x 3/4" (18mm) deep, Type and Gauge - Type 304 18 gauge Stainless Fabricated to field verified dimensions

#### 2.03 MATERIALS

A. Stainless Steel: Bumper Rail Cover, End Caps, and Corners shall be manufactured from Type 304, 18 gauge Stainless Steel

B. Vinyl: Bumper Rail retainer shall be manufactured from rigid vinyl.

#### 2.04 FINISHES

A. Stainless steel: No. 4 satin finish.

### PART 3 - EXECUTION

#### 3.01 EXAMINATION

A. Examine areas and conditions in which the Bumper Rail systems will be installed.

1. Complete all finishing operations, including painting, before beginning installation of Bumper Rails.

B. Wall surface shall be dry and free from dirt, grease and loose paint.

#### 3.02 PREPARATION

A. General: Prior to installation, clean substrate to remove dust, debris and loose particles.

#### 3.03 INSTALLATION

A. General: Locate the Bumper Rail as indicated on the approved detail drawing for the appropriate substrate and in compliance with the IPC installation instructions. Install Bumper Rail level and plumb at the height indicated on the drawings.

B. Installation of Stainless Steel Bumper Rail

1. Determine the height to the top of the Bumper Rail above the finished floor. Deduct  $\frac{3}{16}$ " (5mm) and snap a chalk line at that height.
  2. Use a retainer support as a template, position the top edge of the support against the chalk line, and mark the location of mounting holes on the wall. Supports are located  $\frac{1}{16}$ " in from the outside of each end of the Bumper Rail and spaced a maximum of 32" on center. When joining two sections of Bumper Rail, use a retainer support on both sides of the joint. Tightly butt the two sections of Bumper Rail together.
  3. Drill  $\frac{1}{4}$ " (6mm) holes at each mark. Position ALLIGATOR anchors into the holes on the wall and use #10 x 1-3/4" phillips pan head screw to attach each retainer support to the wall. Level and tighten the retainer supports to the wall. Affix remaining length of base with screws placed approximately every 6 inches.
  4. With ends, corners and base installed, measure along the base from inside edges of ends and corners, to determine length of stainless top.
  5. Install bumper top onto base by pressing upper half to snap over base latching feature. Using a soft mallet or dead blow hammer and cloth, apply pressure to the bottom half of bumper to pivot and snap into place. Continue along length of bumper top until completely installed.
- #### 3.04 CLEANING
- A. At completion of the installation, clean surfaces in accordance with the IPC clean up and maintenance instructions.