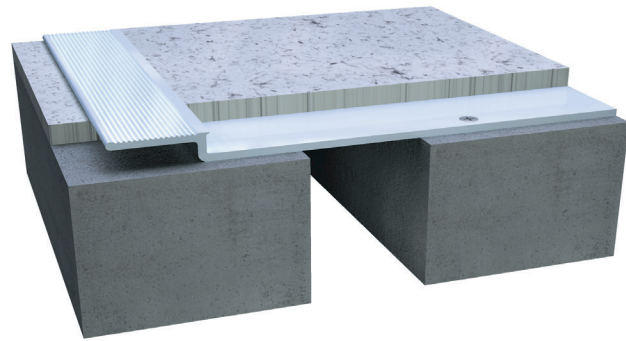


802 Series

A01 - Floor to Floor

A02 - Floor to Wall



Movement Rating $\pm 25\%$

Product Guide



Thermal



Interior



Fire Rated Option



Vapor



ADA Compliant

- Designed to accommodate various flooring thicknesses from carpet to VCT
- Overlap design reduces sightline
- Easy to install
- Economical solution for retrofit and surface mount installations
- Mill finish aluminum

Application	System	W		H1		H2		S		B		Movement +/-			
		Joint Width		Frame Height 1		Height 2		Sightline		Blockout		Horizontal		Vertical	
		US	mm	US	mm	US	mm	US	mm	US	mm	US	mm	US	mm
Floor to Floor	802-A01-050/3	2"	51	1/8"	3	1/8"	4	2"	51	*	*	1/2"	13	*	*
	802-A01-050/6	2"	51	1/8"	3	1/4"	6	2"	51	*	*	1/2"	13	*	*
	802-A01-050/10	2"	51	1/8"	3	3/8"	10	2"	51	*	*	1/2"	13	*	*

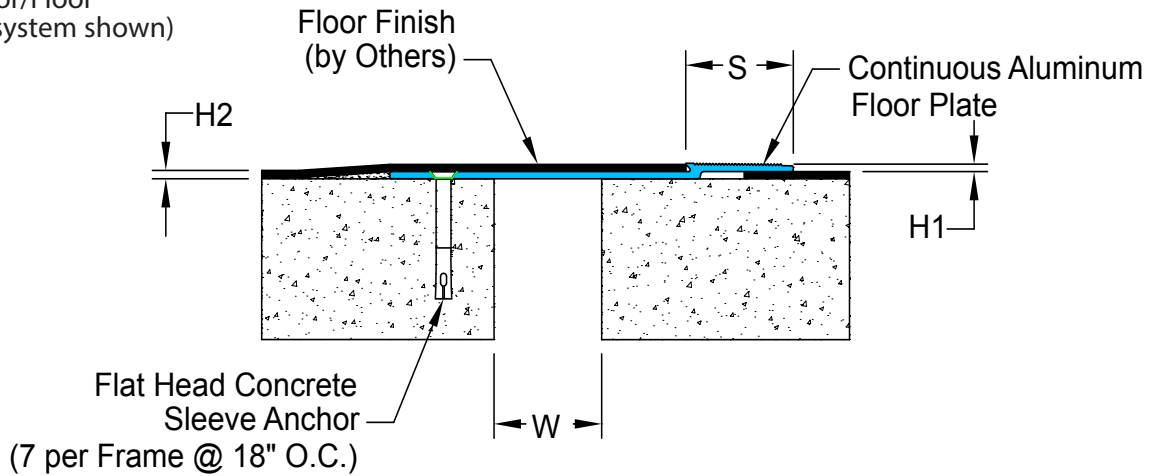
Available in larger widths, please contact Inpro for more details.

IPC.768/REV.6

802 Series

Floor and Wall Systems

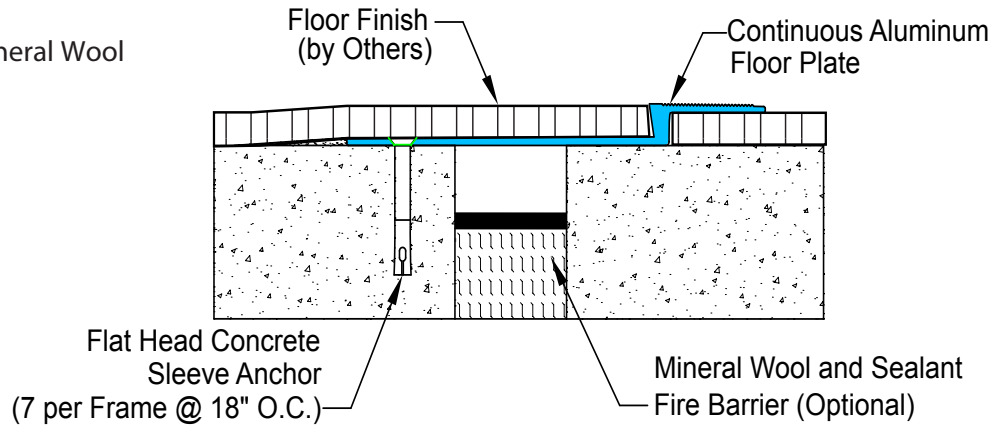
802-A01 Floor/Floor
(2" (51mm) system shown)



802 Series

Options

802-A01 Floor/Floor With Mineral Wool
(2" (51mm) system shown)



802-A01 Floor/Floor With Fire Barrier
(2" (51mm) system shown)

