



Koffler Sales Company

Specialists in Floor and Wall Protection
For Over 50 Years

EverBlock Specs

Questions?
Call us today at **847-438-1152**
Or email us at kofflersales.com

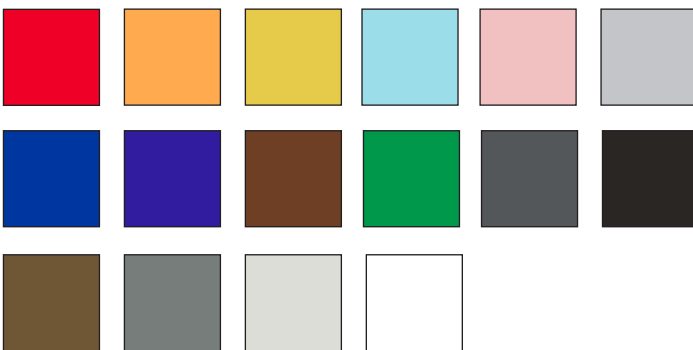


Block	Size (inches*)	Weight (lbs)
Full Block	12 L x 6 W x 6 H	2.3
Line Block	12 L x 3 W x 6 H	1.1
Half Block	6 L x 6 W x 6 H	1.1
Quarter Block	3 L x 6 W x 6 H	0.6
Single Block	3 L x 3 W x 6 H	0.2
Full Cap	12 L x 6 W x 1.1 H	0.3
Quarter Cap	3 L x 6 W x 1.1 H	0.1

* Block height is 6". Lugs are an additional 1" in height.

Colors

Choose from a variety of colors to match your decor.



Full Block



Line Block



Half Block



Full Cap



Quarter Block



Single Block



Quarter Cap

Fire Rating

UL94HB (Underwriters laboratory Yellow Card Number): signifying that EverBlock material embodies a slow burn rate of 2" per minute for a 2" wide by 0.5" thick test sample. Furthermore, UL94HB signifies that the material will not flare up when exposed to an open flame. Hot wire ignition rating: 3

Material

High-impact, recyclable #5 Polypropylene with "no-break" co-polymers. Added UV inhibitors for outdoor use.

FAQs

Are the blocks soundproof?

The EverBlock® solution has strong sound dampening qualities. Inside each block are eight 3" x 3" hollow chambers, providing at minimum 6" of air and three layers of plastic.

How stable is an EverBlock Wall?

It's easy to design and build with EverBlock. When building walls we recommend adding columns to each side of a wall for additional support. For walls longer than 5' we recommend adding a middle column for added stability.

Can I run power through my EverBlock Wall?

Each 12" EverBlock contains 2 cable channels that allow you to run power cables, create illumination with LED lighting strips, or stabilize larger creations. 6" EverBlocks contain one channel that aligns with one of the 12" block channels. Holes are 0.5" in diameter and can accommodate most conduit and cabling.

Warranty

Standard 2-year warranty against manufacturer's defects.

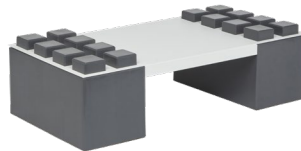
No dust or debris of typical construction
No tools or glue required!

Accessories

Create openings with lintels or door kits for privacy, or make shelving and desks for your office or living space. No tools are required.



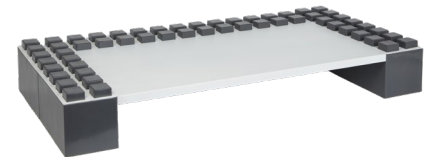
48" Lintel



24" Shelf



Half Piece for 72" Shelf



48" Desk Top



7' EverBlock Accordion Door Kit



36" Shelf



EverBlock Foot Piece
(for use with 4' walls or under)