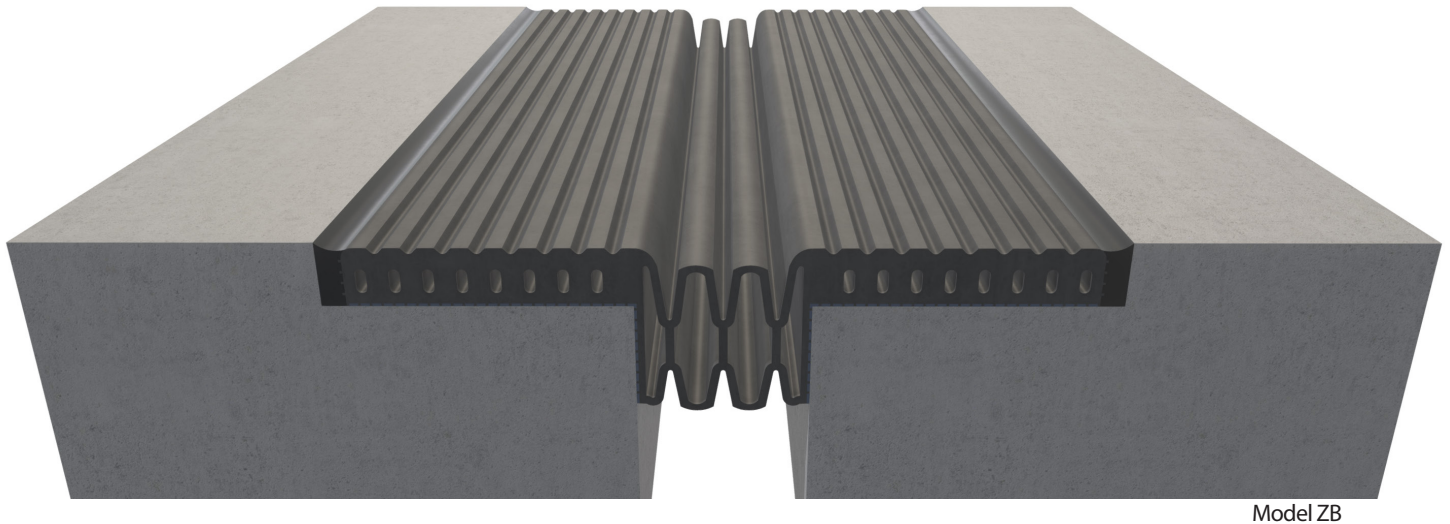


ZB Series



This parking cover has an EPDM seal that allows for movement, while the integral nosing eliminates the need for elastomeric concrete. During installation, the cover is bonded into a high-strength epoxy bedding and is sealed on each side with a urethane sealant, resulting in a durable and watertight system.

Advantages

- Great for parking structures and stadium applications
- Eliminates the need for messy elastomeric concrete
- One-piece design for fast and simple installation
- Splice kits available for field splicing of material
- No mechanical fasteners
- Durable, watertight system



[View 3D Model](#) →

ZB Series

Product Details

- Joint sizes range from 1" to 4" (25.4mm to 101.6mm)
- Available in five standard roll sizes: 20', 30', 65', 130' and 200'
- Meets ASTM E1399

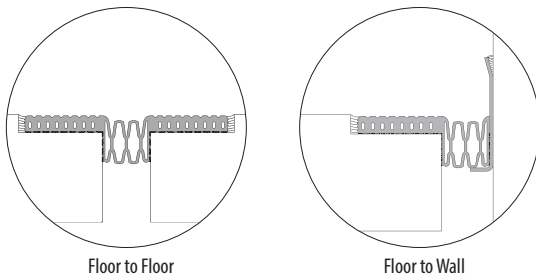


Seal Color



Aluminum in contact with concrete/masonry will have a 2 mil heavy metal free high solids primer

Model Details



MODEL	FLOOR TO FLOOR	FLOOR TO WALL
ZB	•	
ZB-Alt 1		•

Warranty

- Standard Five-Year Warranty



Learn More →