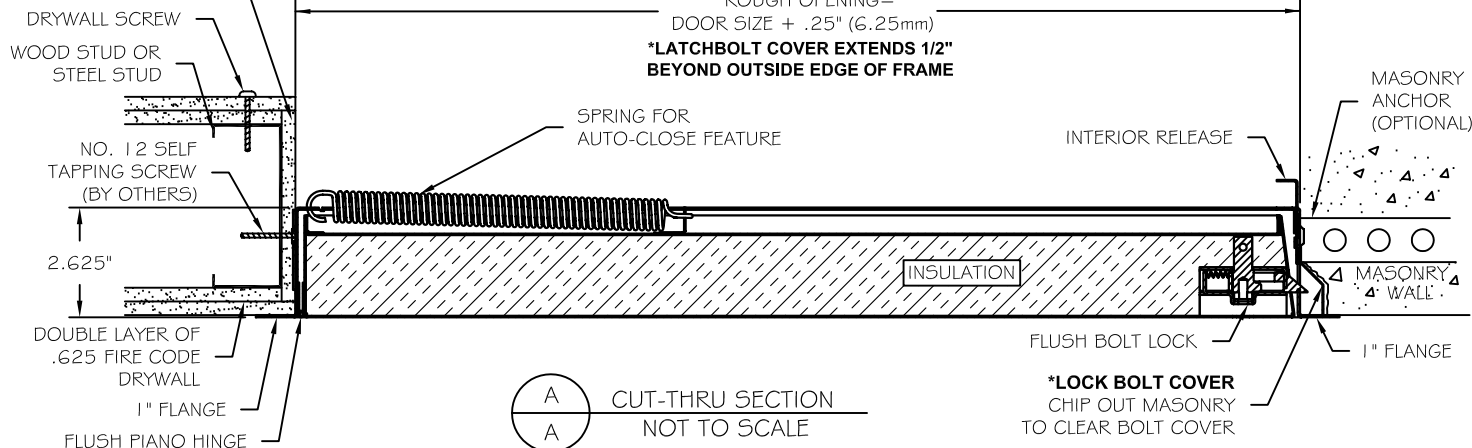


## Masonry Installation

1. Opening dimensions should be 1/4" larger than catalog size of door. Example; for 12" X 12" door, opening should be 12 1/4" X 12 1/4". \*A notched out area is required for the lock bolt cover.
2. For new construction, unfold masonry anchors prior to fill.
3. For existing construction, position door in opening and mark location of attachments on wall using holes in latch and hinge sides of door as marking guides.
4. Remove door and install expansion shields in wall at points marked.
5. Place door in position and attach with #10-32 X 1 flat-head steel machine screws.
6. Check door panel for freedom of movement. If it binds, shim to remove any racking of frame at attachments.
7. Install springs per reference tables below. Self-closure of door is required for UL or Warnock-Hersey fire rating. Neglecting to install springs will negate the fire-rating.
8. When correctly installed, the door will close and latch when released from an open position of approximately 60°.

NOTE: Uninsulated doors (U Series), 14 ga. doors (S Series), and sizes larger than 24" wide or 36" in high are not designed for ceiling installation; using the aforementioned panels for ceiling installation voids all fire-ratings.

\*\*WRAPPING OF STUD REQ'D  
IN 2 AND 3 HOUR CEILING  
APPLICATION ONLY



### LISTINGS

1 1/2 HR. "B" LABEL

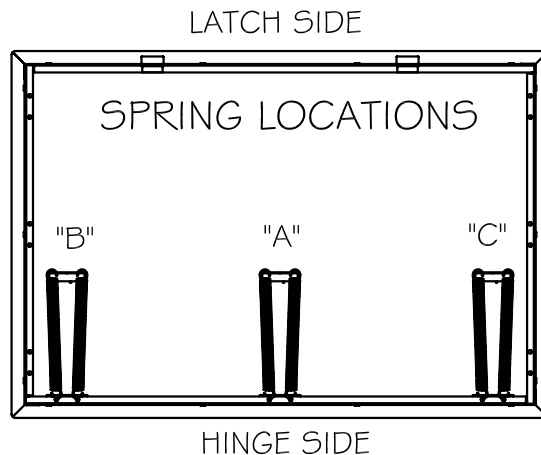


Warnock Hersey



SPRING CHART			
FOR CEILING APPLICATION - SEE NOTE BELOW			
QUANTITY OF SPRINGS	SPRING LOCATION		
	B	A	C
1	—	1	—
2	—	2	—
3	2	—	1
4	2	—	2
5	2	1	2
6	2	2	2

WALL APPLICATIONS MAY REQUIRE LESS SPRINGS



# I SERIES

## INSTALLATION INSTRUCTIONS FOR INSULATED FIRE RATED ACCESS PANELS

### Stud Installation

1. Opening dimensions should be 1/4" larger than catalog size of door. Example; for 12" X 12" door, opening should be 12 1/4" X 12 1/4". \*A notched out area is required for the lock bolt cover.
2. Frame can be supported with 12 ga wire ties to ceiling structure at all four corners for ease of installation.
3. \*\*The interior of opening should be lined with 5/8" type "x" gypsum board. For panels with drywall bead, use screws spaced at 18" o.c., maximum. Minimum of 2 screws per side. Screw length for steel = 1 1/8", for wood = 1 1/4".
4. Place door in opening and mark location of attachments on studding using holes in latch and hinge side of door frame as marking guides.
5. Remove door and drill 5/32 inch holes through studding at points marked for attachment hole.
6. Place door in to position and attach with #12 drywall screws.
7. Check door for freedom of movement. If it binds, shim to remove any racking of frame at attachments.
8. Install springs per reference tables below. Self-closure of door is required for UL or Warnock-Hersey fire rating. Neglecting to install springs will negate the fire-rating.
9. When correctly installed, the door will close and latch when released from an open position of approximately 60°.

NOTE: Uninsulated doors (U Series), 14 ga. doors (S Series), and sizes larger than 24" wide or 36" in high are not designed for ceiling installation; using the aforementioned panels for ceiling installation voids all fire-ratings.

\*\*WRAPPING OF STUD REQ'D

IN 2 AND 3 HOUR CEILING

APPLICATION ONLY

DRYWALL SCREW

WOOD STUD OR

STEEL STUD

NO. 12 SELF

TAPPING SCREW

(BY OTHERS)

2.625"

DOUBLE LAYER OF

.625 FIRE CODE

DRYWALL

1" FLANGE

FLUSH PIANO HINGE

ROUGH OPENING=

DOOR SIZE + .25" (6.25mm)

\*LATCHBOLT COVER EXTENDS 1/2"

BEYOND OUTSIDE EDGE OF FRAME

SPRING FOR  
AUTO-CLOSE FEATURE

INTERIOR RELEASE

MASONRY

ANCHOR

(OPTIONAL)

INSULATION

FLUSH BOLT LOCK

1" FLANGE

\*LOCK BOLT COVER

CHIP OUT MASONRY

TO CLEAR BOLT COVER



CUT-THRU SECTION

NOT TO SCALE

### LISTINGS

1 1/2 HR. "B" LABEL



Warnock Hersey



SPRING CHART			
FOR CEILING APPLICATION - SEE NOTE BELOW			
QUANTITY OF SPRINGS	SPRING LOCATION		
	B	A	C
1	—	1	—
2	—	2	—
3	2	—	1
4	2	—	2
5	2	1	2
6	2	2	2

WALL APPLICATIONS MAY REQUIRE LESS SPRINGS

