

AcoustiCORK™ RR300/RC500

3.2mm Rubber & 5mm Rubber/Cork Sound Control Underlayments

INSTALLATION INSTRUCTIONS
Floating Wood, Cork or Laminate
Floors on a Concrete Slab Subfloor

The following installation instructions are a recommendation, but are not intended as a definitive project specification. They are presented in an attempt to be used with recommended installation procedures as published by the National Oak Flooring Manufacturers Association (NOFMA) and the National Wood Flooring Association (NWFA).

SUBFLOOR

1. All subfloor work should be in accordance with the recommended procedures as published by NOFMA and the NWFA.
2. Concrete subfloor should be level, properly sloped and structurally sound.
3. Inspect concrete subfloor for any open cracks and fill with a high-grade epoxy filler.
4. Remove any excess concrete lumps or residue that may interfere with the installation of the AcoustiCORK underlayment or the finished floor.

TESTING FOR MOISTURE

1. Test the subfloor for excessive moisture prior to the installation of the AcoustiCORK underlayment.
2. If excessive moisture is present (normally >3 lbs. per 1000 s/f in 24hrs) in the subfloor, a vapor-retarding barrier must be installed to correct the problem. Consult the project architect or flooring manufacturer for details.

VAPOR RETARDING BARRIER

1. Consult the most recent NOFMA & NWFA Installation Manuals for methods and materials associated with the use of vapor retarding barriers.

PERIMETER ISOLATION BARRIER

1. Install the precut 3/4" wide, 6mm thick perimeter isolation barrier vertically around the perimeter of the entire floor including any openings or protrusions such as electrical boxes, heating ducts, cold air returns, columns or pipes in the subfloor installation. The perimeter isolation strip **MUST be installed prior** to the AcoustiCORK underlayment being installed.
2. Remove the release liner from the self-adhesive backing and place flat against the wall flush to the floor.

3. After positioning, press the isolation barrier firmly into place at all wall and vertical partitions surrounding the perimeter using the AcoustiCORK underlayment material.
4. Never mechanically fasten the isolation barrier, as this will severely diminish the acoustical performance of the entire sound rated floor system.
5. After the finished floor is installed, the top edge of the isolation barrier should be trimmed flush with the surface of the finished floor.

ACOUSTICORK RR300 or RC500 UNDERLAYMENT for FLOATING WOOD or LAMINATE FLOORS

1. Cut the 3.2mm AcoustiCORK RR300 or 5mm RC500 material to the desired length and position the material in the space to be covered.
2. Butt the AcoustiCORK underlayment against the perimeter isolation barrier already installed at the floor/wall junction
3. Proceed to cover the entire room, making sure the sheets are tightly butted together, without gaps. Tape the joints with duct or fiberglass mesh tape. **For this type of installation it is recommended that the sheets not be glued to the subfloor.** Never mechanically fasten the sheets to the subfloor, as this will severely diminish the acoustical value of the product.
4. After completion, the AcoustiCORK RR300 or RC500 underlayment should cover the entire flooring area without gaps and with the joints securely taped.

FLOATING WOOD FLOOR INSTALLATION

1. Follow manufacturers recommended instructions for the finished floor, including any vapor retarding membrane as required by the manufacturer.
2. If a baseboard or shoe molding detail is required leave a minimum 1/8" gap between the finished floor and the bottom of the baseboard and any shoe moldings. This gap must be filled with a non-hardening, color matching, paintable or clear Acoustical Grade Sealant.

AcoustiCORK™ PRODUCTS

Sound Control Underlayment & Crack Suppression Membrane

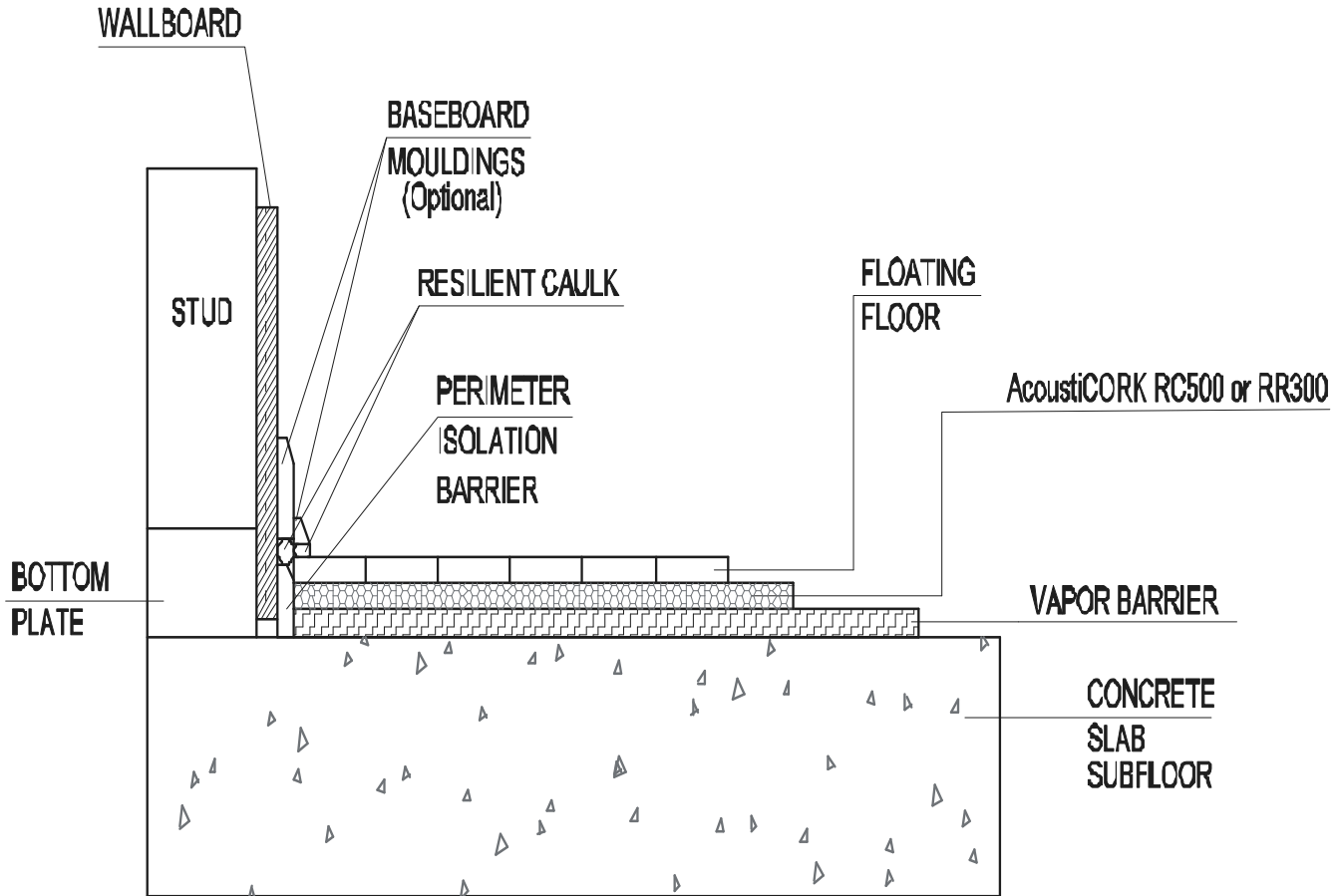
26112 110th Street • PO Box 25 • Trevor, WI 53179 • 1-800-558-3206 • 1-262-862-2311 • FAX 1-262-862-2500

Visit our Website at www.acousticorkusa.com for the most complete information on AcoustiCORK™

AcustiCORK™ RR300/RC500

3.2mm Rubber & 5mm Rubber/Cork Sound Control Underlayments

INSTALLATION INSTRUCTIONS
Floating Wood, Cork or Laminate
Floors on a Concrete Slab Subfloor



AcustiCORK™ PRODUCTS

Sound Control Underlayment & Crack Suppression Membrane

26112 110th Street • PO Box 25 • Trevor, WI 53179 • 1-800-558-3206 • 1-262-862-2311 • FAX 1-262-862-2500

Visit our Website at www.acousticorkusa.com for the most complete information on AcustiCORK™