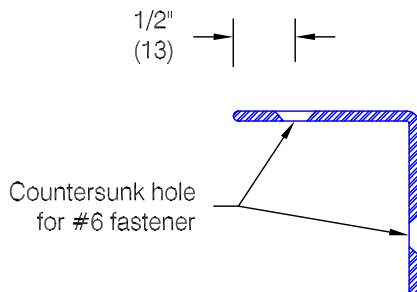
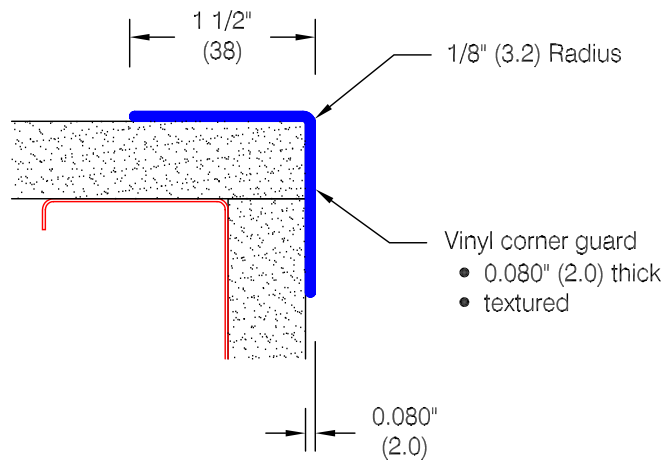


CG-12 Corner Guard



Optional Drilling:

- Standard spacing: 1" (25) from each end and spaced evenly not to exceed 36" (914) oc

Features:

- Class A fire rating
- Stock lengths:
 - 4'-0" (1219), 8'-0" (2438) & 12'-0" (3658)

Finishes:

- Manufacturer's standard colors
- Custom colors available

Mounting Options:

- Adhesive
 - ADH-30 adhesive supplied separate
- Drilled
 - Countersunk holes for ABSS-134 #6 x $1\frac{1}{2}"$ (38) oval head sheet metal screw supplied separately as required
- Taped
 - ADH-4042 double sided adhesive tape factory applied to corner guard

